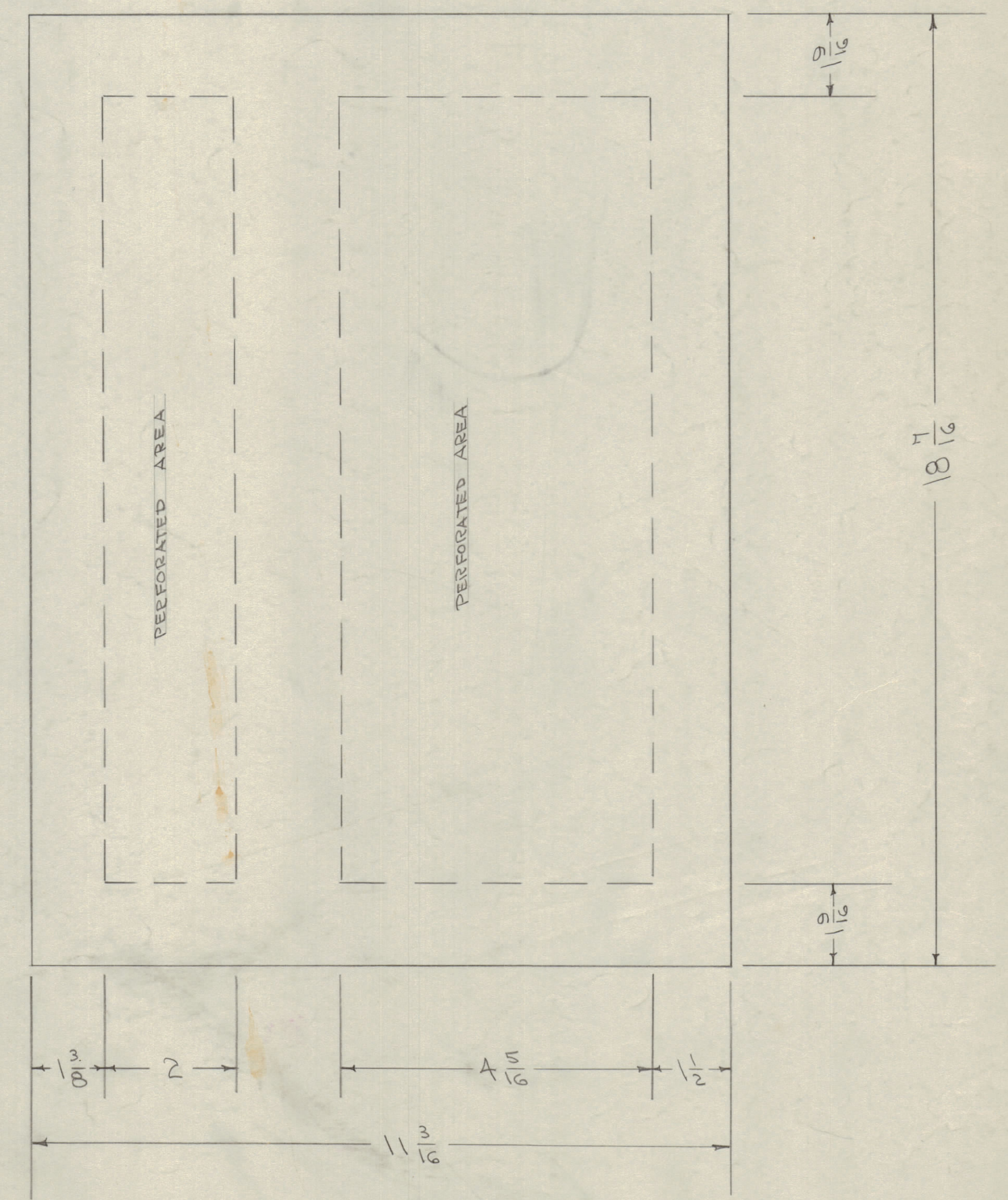
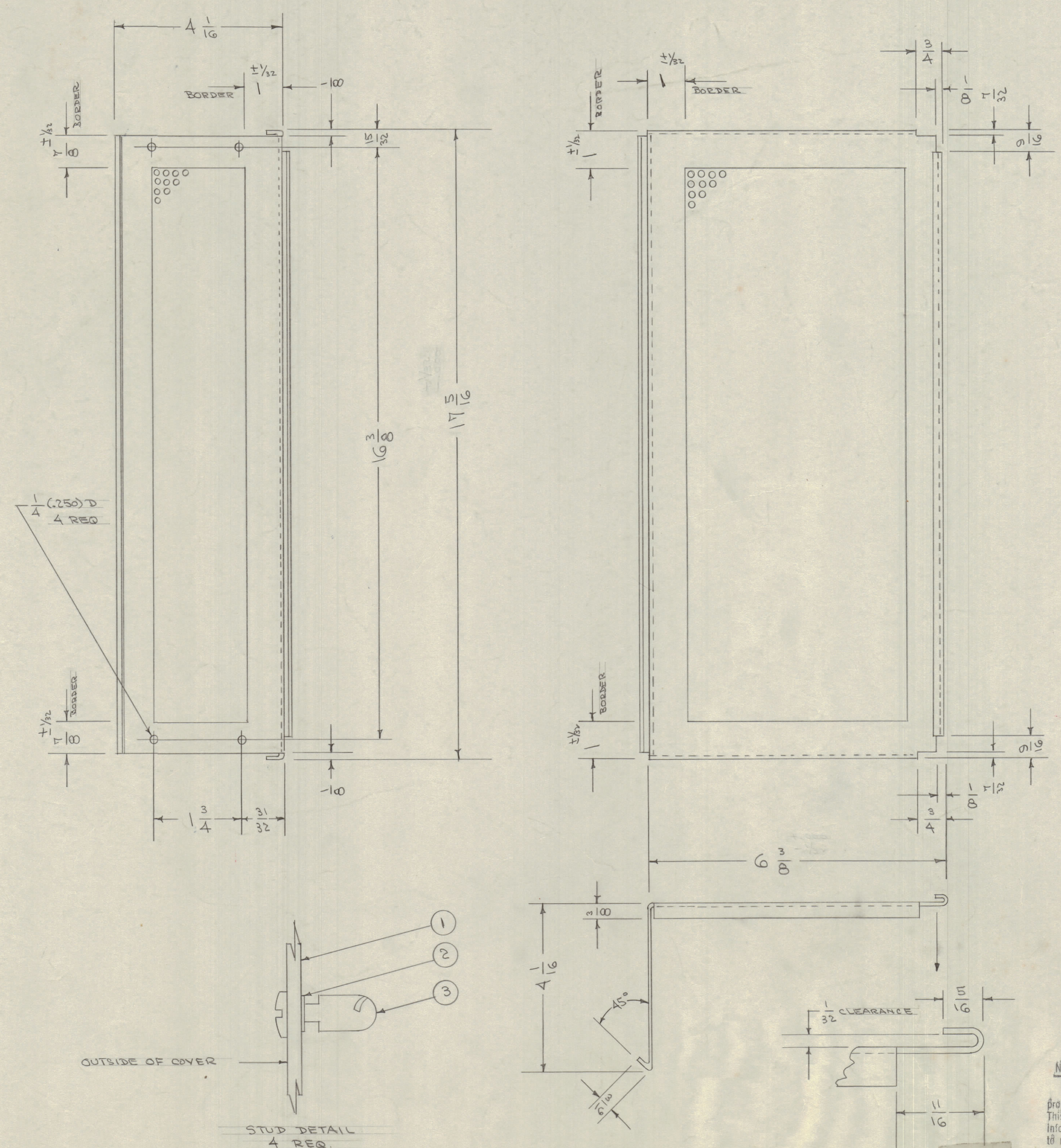


IF IT IS FOUND DESIRABLE TO CHANGE ANY TOLERANCE OR OTHER DETAIL SPECIFIED ON THIS DRAWING NOTIFY THE PURCHASER PROMPTLY.  
 MAXIMUM ALLOWABLE TOLERANCES HAVE BEEN DETERMINED AND DEVIATIONS WILL BE CAUSE FOR REJECTION.  
 REMOVE ALL BURRS AND SHARP EDGES



BLANK LAYOUT  
 NOTE: PERFORATED ALUMINUM  
 .072" HOLES ON 1/8 CENTERS

—BLANK SIZE—  
 $10 \frac{45}{64} \times 17 \frac{29}{32}$

NOTICE TO PERSONS RECEIVING THIS DRAWING  
 THE TECHNICAL MATERIEL CORPORATION claims proprietary right in the material disclosed herein. This drawing is issued in confidence for engineering information only and may not be reproduced or used to manufacture anything shown hereon without permission from THE TECHNICAL MATERIEL CORPORATION to the user. This drawing is loaned for mutual assistance and is subject to recall at any time.  
 Property of:  
 THE TECHNICAL MATERIEL CORPORATION  
 MAMARONECK, NEW YORK

4	3	FS-110-1	STUD, SLOTTED HEAD	
4	2	FS-109-3	RING, RETAINING	
1	1	MS-577	TOP COVER (NO DRAWING)	
REQ. ITEM	PART NO.	DESCRIPTION		SYMBOL
.051		THE TECHNICAL MATERIEL CORP.		
STOCK SIZE		MAMARONECK, NEW YORK		
ALUMINUM - #		TOP COVER ASSY.		
MATERIAL WEIGHT PER PC.		RSC-2		
525 H32		C.O.D. 11/31/54		
SEE NOTE		DRAWN ELEC. DES. APP. MECH. DES. APP.		
TYPE & TEMPER		M.H.S. J.J.		
#		HEAT TREAT. SPEC.		
1 RSC-2		170		
MODEL		10-3-54		
PROJECT NO.		DATE		
ASSY. NO.		USED ON		
REQ. PER UNIT		FINISH & SPEC. NO.		

A	1	S-404 IRIDITE WAS S-101 CAUSTIC NP	10/26/54	1001	A.B.	EMN	
ISSUE	ITEM	CHANGED FROM	DATE	CN. NO.	DRAFTS	CHECKER	ENG. APP.
TOLERANCES							
ALL DEC. DIM. $\pm$		DRILL PUNCH, COMMERCIAL STOCK					
OTHERS FRAC. DIM. $\pm$		SIZES AND MANUFACTURERS					
ANGULAR DIM. $\pm$		TOLERANCES ARE NOT INCLUDED.					

A-879  
 4