

IF IT IS FOUND DESIRABLE TO CHANGE ANY TOLERANCE OR OTHER DETAIL SPECIFIED ON THIS DRAWING NOTIFY THE PURCHASER PROMPTLY.

MAXIMUM ALLOWABLE TOLERANCES HAVE BEEN DETERMINED AND DEVIATIONS WILL BE CAUSE FOR REJECTION. REMOVE ALL BURRS AND SHARP EDGES

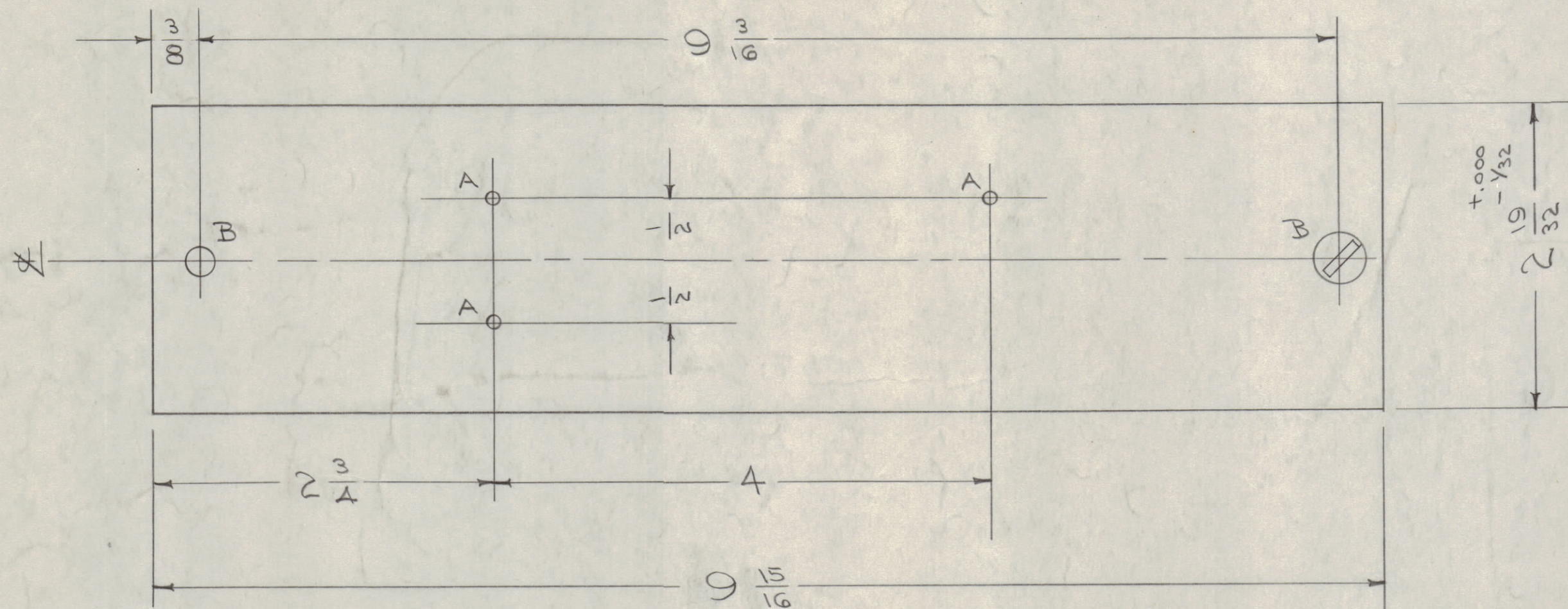
NOTICE TO PERSONS RECEIVING THIS DRAWING

THE TECHNICAL MATERIEL CORPORATION claims proprietary right in the material disclosed hereon. This drawing is issued in confidence for engineering information only and may not be reproduced or used to manufacture anything shown hereon without permission from THE TECHNICAL MATERIEL CORPORATION to the user. This drawing is loaned for mutual assistance and is subject to recall at any time.

Property of:

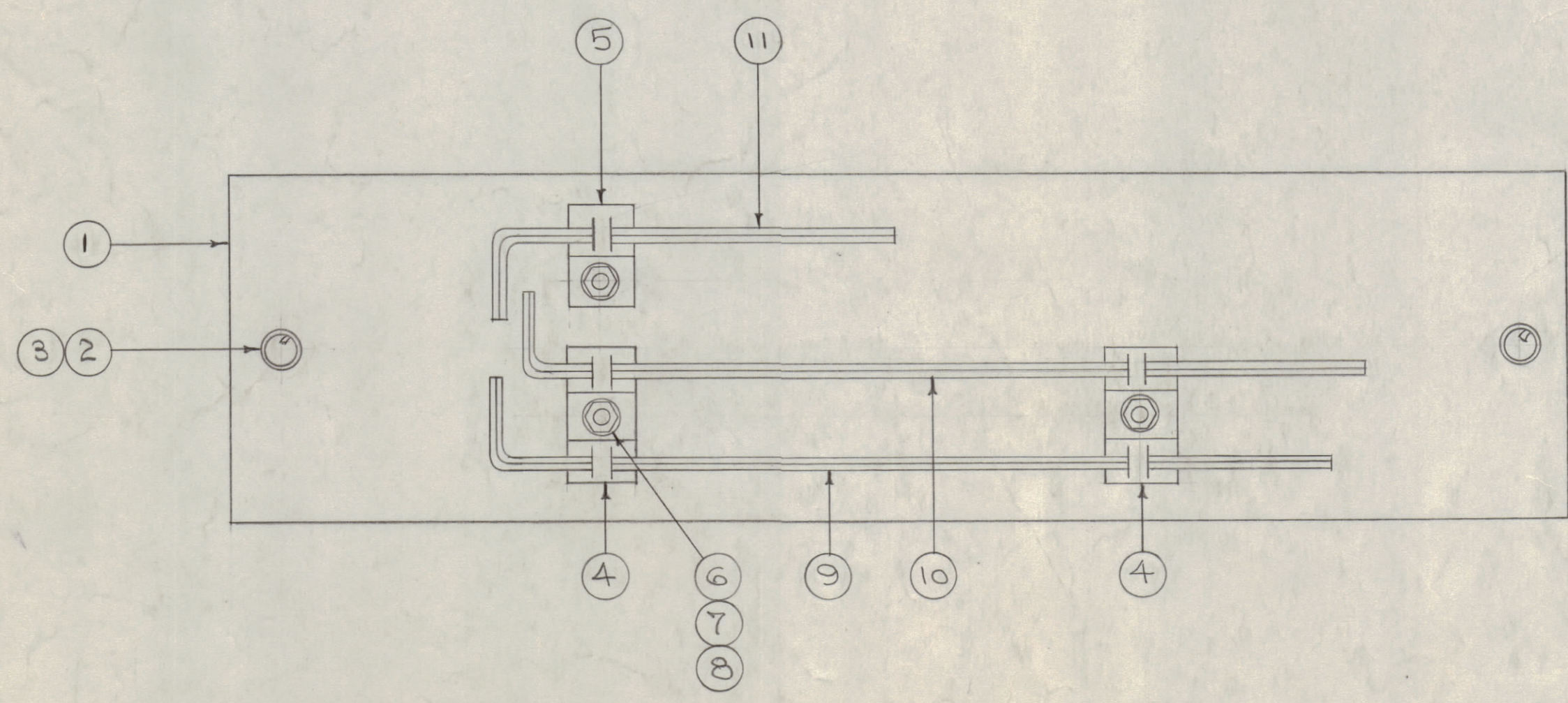
THE TECHNICAL MATERIEL CORPORATION
MAMARONECK, NEW YORK

A- $\frac{1}{8}$ (.125)D. 3 HOLES REQ.
B- $\frac{1}{4}$ (.250)D 2 " " "



A-860 B

BLANK SIZE
9 15/16 X 2 19/32



1	11	WR-100-5	WRENCH, HEX.
1	10	WR-100-19	" , "
1	9	WR-100-18	" , "
3	8	NTH04A08NG	NUT, HEX
3	7	LWE04MRN	WASHER, LOCK
3	6	SCBP04A08M4	SCREW, MACHINE
1	5	CU-103-1	CLIP, SPRING
2	4	CU-103-3	" , "
2	3	FS-109-3	RING, RETAINING
2	2	FS-110-1	STUD, SLOTTED HEAD
1	1	MS-560	TOP COVER, GEAR (NO DWG.)

REQ. ITEM	PART NO.	DESCRIPTION	SYMBOL
.064		THE TECHNICAL MATERIEL CORP. MAMARONECK, NEW YORK	
STOCK SIZE		TOP COVER ASSY., GEAR	
MATERIAL	WEIGHT PER PC.	PMO	
ALUMINUM	11	528 H32	
TYPE & TEMPER		CD. 10-28-SA	
HEAT TREAT. SPEC.		DRAWN M.H.S. ELEC. DES. APP. MECH. DES. APP.	
FINISH & SPEC. NO.		CHECKED SUPERCEDES MS-560 FINAL APPROVAL A-860 B	

B	1	B/M CHT UPDATED	12/16/54	15329	AVV	9/12	EMN
A	1	S404-IRIDITE VAS S/DI CAUSTIC D/D	12-8-59	1001	P		EMN
ISSUE	ITEM	CHANGED FROM	DATE	CN. NO.	DRAFTS	CHECKER	ENG. APP.
TOLERANCES		DRILL, PUNCH, COMMERCIAL STOCK SIZES AND MANUFACTURERS TOLERANCES ARE NOT INCLUDED.					
ALL OTHERS		DEC. DIM. ± FRAC. DIM. ±1/64 ANGULAR DIM. ±					

1	PMO-1	285	1/16 A808	10-28-54
1	PMO-2	285	1/16 A808	10-28-54
REQ PER UNIT	MODEL	PROJECT NO.	ASS'Y. NO.	DATE
USED ON				