

IF IT IS FOUND NECESSARY TO CHANGE ANY DIMENSIONS OR OTHER DATA SPECIFIED ON THIS DRAWING NOTIFY THE PURCHASER PROMPTLY.
 MAXIMUM ALLOWABLE TOLERANCES HAVE BEEN GIVEN. DIMENSIONS NOT SPECIFIED WILL BE GIVEN FOR PRACTICE. REMOVE ALL BURRS AND SHARP EDGES.

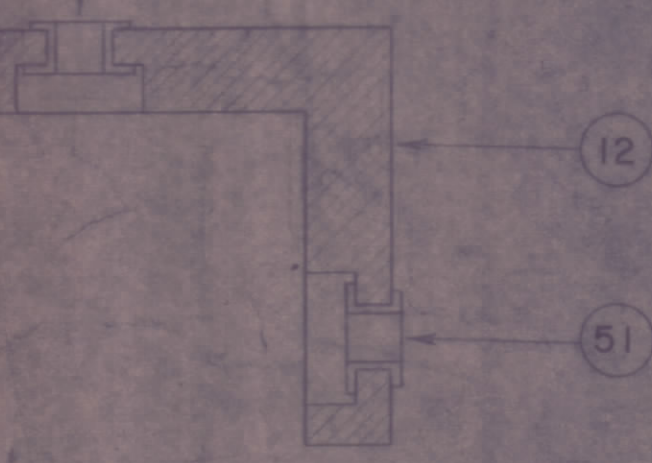
ROTATE FREE GEAR 1-1/2 TEETH TO GAIN PROPER TENSION ON ASSY.

NOTE: ITEM 47 IS USED AS A SHIM. THE QUAN. REQ. WILL VARY DUE TO TOLERANCES ON THE METAL WORK.



4	55	FW10HBN	WASHER, FLAT
3	54	LWS10MRN	WASHER, LOCK, SPLIT
2	53	LWS06MRN	WASHER, LOCK, SPLIT
4	52	FW06HBN	WASHER, FLAT
5	51	BB-117-6	BEARING, NYLON
1	50	SEE CHART	TERMINAL, LOCKING
1	49	SEE CHART	SHAFT
2	48	PM-413	BRACE, MAIN GEAR PLATE
	47	WA-108	WASHER, SHIM
4	46	TE1032AE6TH	SPACER, FRONT PANEL
18	45	SLK06325P2	SCREW, HEADLESS SET
	44		DELETED
3	43	SLK06325P3	SCREW, HEADLESS SET
8	42	WA-109-36	WASHER, FIBER
1	41	SCBP0832BN8	SCREW, MACHINE
1	40	PM-317	STOP, CALIBRATE CONTROL
4	39	SCBP0632BN9	SCREW, MACHINE
3	38	SCBP0832BN8	SCREW, MACHINE
4	37	SM-127-D-632	NUT, LOCK
8	36	NTH0832BN10	NUT, HEX.
4	35	SCHH1032SN8	SCREW, MACHINE HEX. HEAD
4	34	LWE10MRN	LOCKWASHER, EXTERNAL
3	33	PM-220	COUPLING, FLEXIBLE

2	32	PN-52-062-4	PIN, ROLL
7	31	SCFP0632BN4	SCREW, MACHINE
1	30	PM-321	SPACER, MAIN SHAFT
1	29	PM-308	BUSHING, DIAL
1	28	LD-193/MS748	PLATE, DIAL
1	27	PM-305	COUNTERBALANCE
1	26	PM-207	DRIVE, VERNIER (MODIFIED)
4	25	TE-135-2	SPACER
4	24	SCBP0632BN2	SCREW, MACHINE
1	23	PM69IFD0.750A	SHAFT
1	22	PM-69IFD-3.000S	SHAFT, DIAL
2	21	NTH0832BN10	NUT, HEX.
3	20	SCFP0632BN6	SCREW, MACHINE
1	19	A-826	GEAR PLATE SUB ASS'Y
1	18	LWS08MRN	LOCKWASHER, SPLIT
3	17	TE0832AE6H	SPACER, GEAR HOUSING
2	16	A-939	GEAR, MITRE ASSEMBLY
4	15	SCBP0632BN11	SCREW, MACHINE
2	14	MS-549	SPACER, COUNTER
1	13	CY-104	COUNTER
1	12	PM-301	DIAL GEAR HOUSING SUB ASS'Y
2	11	PM-316	COLLAR, CALIBRATE CONTROL
8	10	SCBP0632BN6	SCREW, MACHINE
4	9	LWE06MRN	LOCKWASHER, EXTERNAL
2	8	MS-539	FLOAT SUB ASS'Y
8	7	SCBP0632BN6	SCREW, MACHINE
4	6	LWE08MRN	LOCKWASHER, EXTERNAL
1	5	A826	CAL. GEAR PLATE SUB ASS'Y
1	4	A-830	CAL. SHAFT SUB ASS'Y
1	3	G1-127	GEAR
4	2	TE0832AE6SH	SPACER, CALIBRATE GEAR
1	1	A-858	PLATE, MAIN GEAR



DETAIL "AA"

SEE DETAIL "AA"

THE CONTENTS OF THIS DRAWING ARE THE EXCLUSIVE PROPERTY OF THE TECHNICAL MATERIAL CORP. ITS USE AND REPRODUCTION IN WHOLE OR IN PART IS STRICTLY FORBIDDEN.

NOTE: LUBRICATION
 1- DELETED
 2- APPLY THIN COAT OF "MOLYCOTE" TO CALIBRATE GEARS.

	ITEM 49	ITEM 50
RTF-2	PM-69IRF182P	
PMQ-485	PM-69IRF182A	TE-104-2

S	ADDED ITEM 66	DATE: 11-16-54	BY: [Signature]
REV. ITEM	CHANGED FROM	DATE	BY
ALL	REV. DIM. 2		
OTHER	REV. DIM. 2		

PMQ-2	PMQ-1	285	070	A808	10-26-54
-------	-------	-----	-----	------	----------

REQ. QTY.	PART NO.	DESCRIPTION	SYMBOL
		THE TECHNICAL MATERIAL CORP. HAMARONICK, NEW YORK	
		MECHANICAL SUB ASS'Y	
		MAIN GEAR PLATE	
		DATE: 11-16-54	
		BY: [Signature]	
		CHECKED: [Signature]	
		APPROVED: [Signature]	

A-855 S

A-855 S