

IF IT IS FOUND DESIRABLE TO CHANGE ANY TOLERANCE OR OTHER DETAIL SPECIFIED ON THIS DRAWING NOTIFY THE PURCHASER PROMPTLY.

MAXIMUM ALLOWABLE TOLERANCES HAVE BEEN DETERMINED AND DEVIATIONS WILL BE CAUSE FOR REJECTION. REMOVE ALL BURRS AND SHARP EDGES

INSPECTION STAMP, APPROVAL STAMP, & TMC INSIGNIA NF-136 ON TOP OF CAN (AFTER PAINTING)

STAMP COVER AS SHOWN SEE CH-132 FOR SUFFIX.

ALL FOUR SIDES

CENTER PUNCH ON TERMINAL END OF CAN TO BE LINED UP WITH MTG. STUDS AS INDICATED.

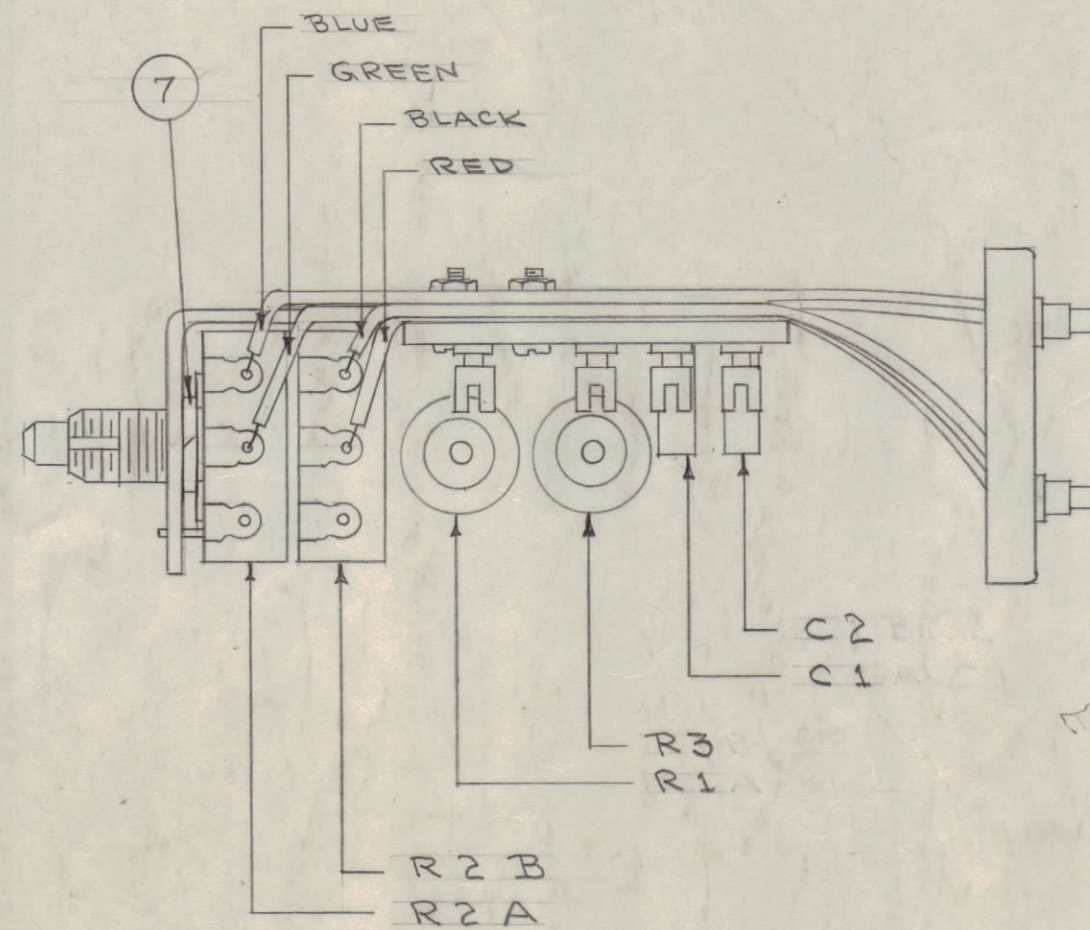
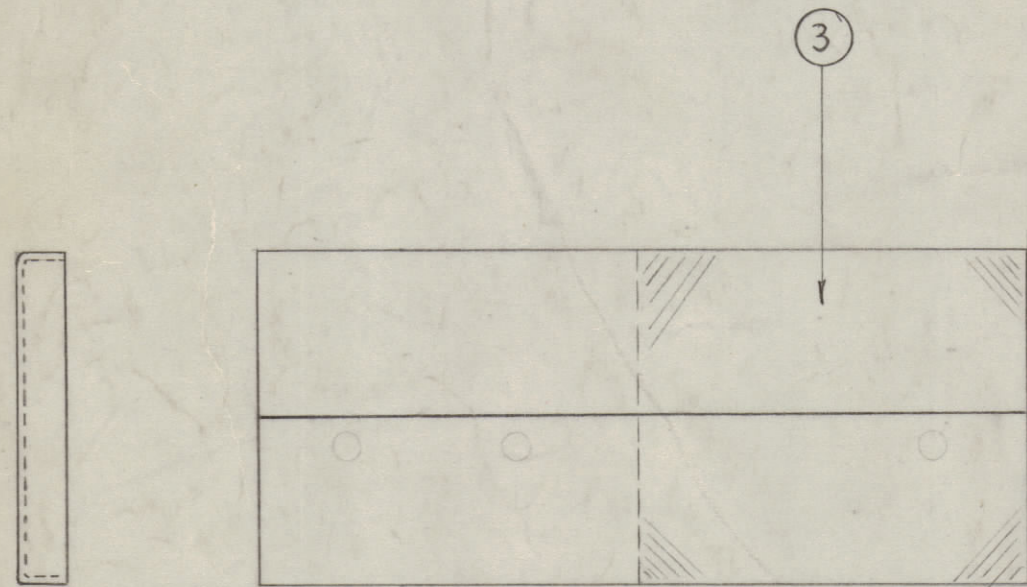
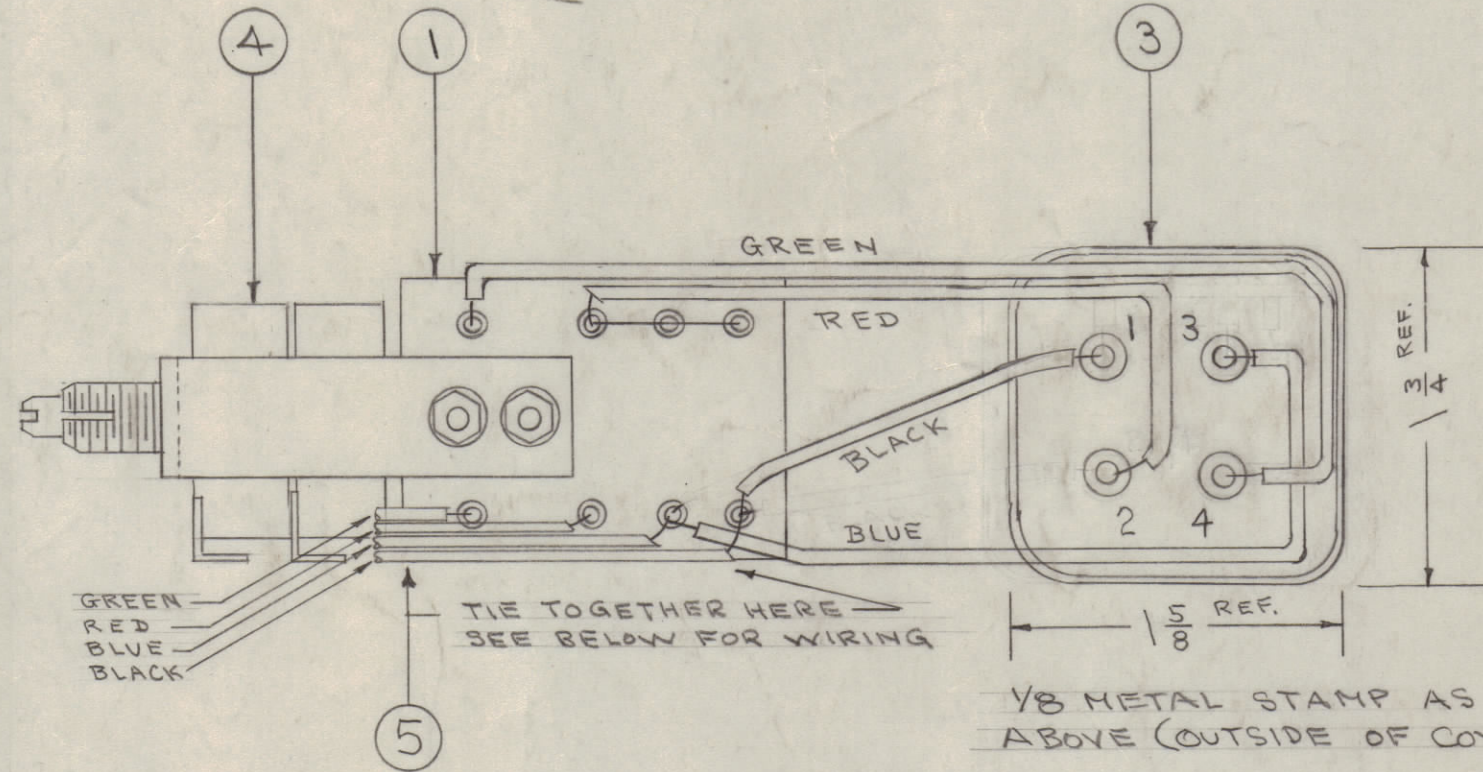
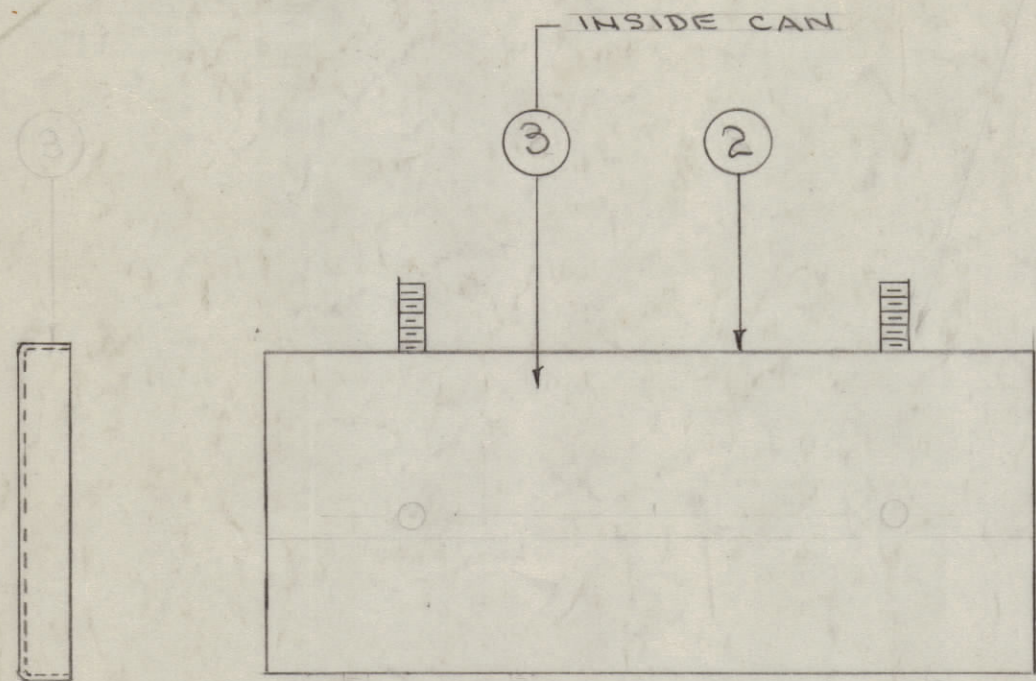
1/8" METAL STAMP AS ABOVE (OUTSIDE OF COVER)

**NOTICE TO PERSONS RECEIVING THIS DRAWING**

THE TECHNICAL MATERIEL CORPORATION claims proprietary right in the material disclosed hereon. This drawing is issued in confidence for engineering information only and may not be reproduced or used to manufacture anything shown hereon without permission from THE TECHNICAL MATERIEL CORPORATION to the user. This drawing is loaned for mutual assistance and is subject to recall at any time.

Property of:  
THE TECHNICAL MATERIEL CORPORATION  
MAMARONECK, NEW YORK

A-847 c



NOTE - FINISH  
DEGREASE -  
S-11A ZINC CHROMATE PRIMER  
S-115 SMOOTH GREY ENAMEL

C	ITEMS 7,8,9,10 ADDED	3/6/56	3	B	JAB	WJC
B	ITEM 3 CLARIFIED	4/15/55	2	PB	JAB	WJC
A	TERM. CAN ROTATED 90° REF. DIMEN. ADDED	12-10-54	1	M.H.S.	WJC	K2

ISSUE ITEM	CHANGED FROM	DATE	CN. NO.	DRAFTS	CHECKER	ENG. APP.
TOLERANCES		SCALE:				
ALL OTHERS	DEC. DIM. ± FRAC. DIM. ± ANGULAR DIM. ±	DRILL, PUNCH, COMMERCIAL STOCK SIZES AND MANUFACTURERS TOLERANCES ARE NOT INCLUDED.				

1	NF-104	170		10/13/54
REQ PER UNIT	MODEL	PROJECT NO.	ASSY. NO.	DATE
USED ON				

1	10	LWS04MRC	LOCKWASHER, SPLIT	
1	9	SCB50440BC3	SCREW, MACHINE	
1	8	NTH3732BNIG	NUT, HEX	
1	7	LWI37LBC	LOCKWASHER, INT.	
X	6	BS-100	SOLDER, SOFT	
X	5	CD-100-2	CORD, LACING, NYLON	
1	4		SEE CHART CH-132	R2 A&B
1	3	IM-1A2	LINER, CAN	
1	2	BX-122	CAN	
1	1	A-846	TERM. BD. ASSY.	
REQ. ITEM	PART NO.	DESCRIPTION		SYMBOL
THE TECHNICAL MATERIEL CORP. MAMARONECK, NEW YORK				
FINAL ASSY. NF-104				
STOCK SIZE				
MATERIAL		WEIGHT PER PC.		
TYPE & TEMPER		C.O.D. 10-B-54		
HEAT TREAT. SPEC.		DRAWN: JAB, ELEC. DES. APP.: WJC, MECH. DES. APP.: WJC		
SEE NOTE		CHECKED: JAB, FINAL APPROVAL: A.J.J.		
FINISH & SPEC. NO.		A-847		