

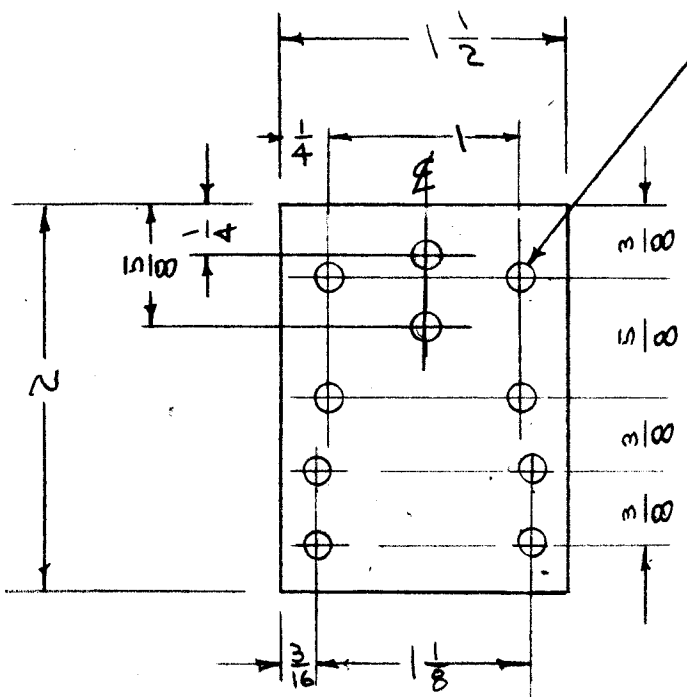
IF IT IS FOUND DESIRABLE TO CHANGE ANY TOLERANCE OR OTHER DETAIL SPECIFIED ON THIS DRAWING NOTIFY THE PURCHASER PROMPTLY.

MAXIMUM ALLOWABLE TOLERANCES HAVE BEEN DETERMINED AND DEVIATIONS WILL BE CAUSE FOR REJECTION. REMOVE ALL BURRS AND SHARP EDGES

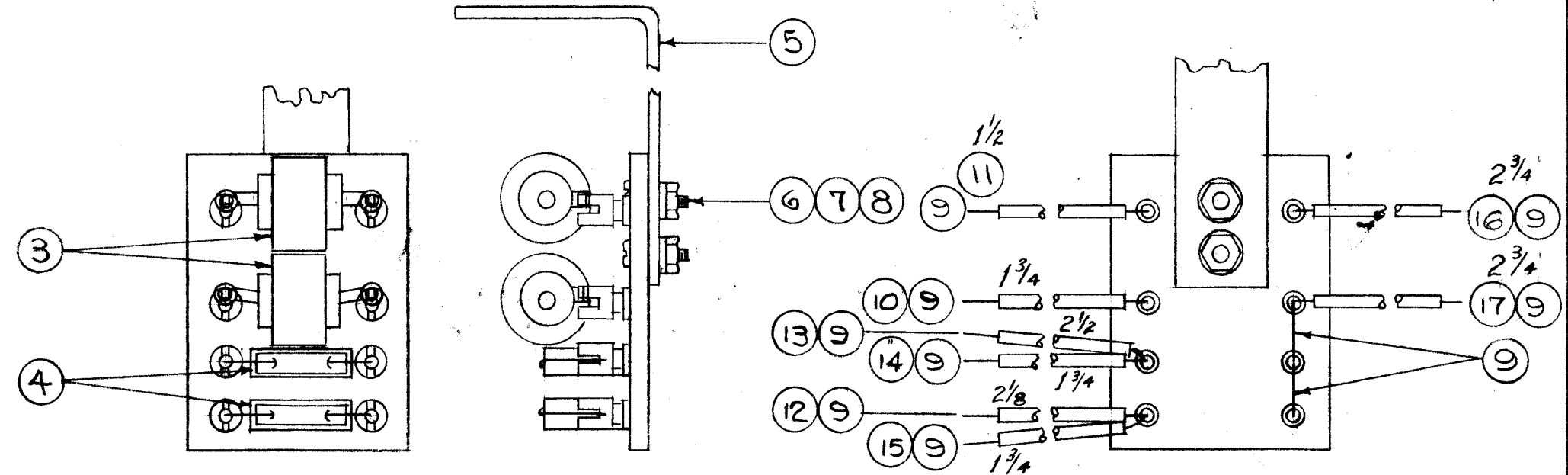
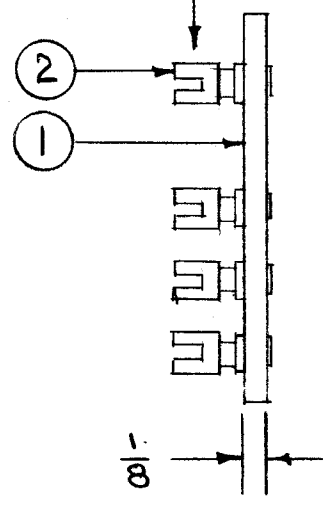
A-846 E

#32 (.116) DRILL 10 HOLES REQ.

NOTE - COAT BOARD WITH S-113 FUNGUS RESISTANT VARNISH BEFORE LUGS ARE STAKED.



NOTE POS. OF LUG



X	18	BS-100	SOLDER, SOFT	
2 3/4	17	PX-104-3-.034	INSULATION, SLEEVING (RED)	
2 3/4	16	-4-.034	" " (GRN.)	
1 3/4	15	-1-.034	" " (BLK.)	
1 3/4	14	-6-.034	" " (BLUE)	
2 1/2	13	PX-104-6-.034	INSULATION, SLEEVING (BLUE)	
2 1/8	12	PX-104-1-.034	INSULATION, SLEEVING (BLK.)	
1 1/2	11	PX-104-4-.034	INSULATION SLEEVING (GRN.)	
1 3/4	10	PX-104-3-.034	INSULATION SLEEVING (RED)	
X	9	WL-100-7	WIRE, BUSS BAR 22 GA.	
2	8	NTH0440BC6	NUT, HEX.	
2	7	LWED4MRC	WASHER, LOCK	
2	6	SCBS0440BC6	SCREW, MACHINE	
1	5	MS-570	BRACKET, TERM. BD.	
2	4		SEE CHART CH-132	2
2	3		" " CH-132	3
8	2	TE-109-3	TERMINAL, TURRET	
1	1	PX-244	BOARD, TERM. (NO DWG.)	

E	1	ITEMS 14, 15, 16, 17, 18 ADDED	3/24/55	5	13	WJS	A.J.J.
D	1	#32 DRILL WAS 2.9 M.M. DR.	11/18/55	4	13	WJS	WJS
C	1	PX-104 WAS SRIR	4/15/55	3	16	J.M.R.	WJS
B	1	HIG. HOLES WERE 1/8	7/24/54	2	13	M.H.S.	WJS
A	1	4 "B" RELOCATED	12/24/54	1	13	WJS	WJS
ISSUE	ITEM	CHANGED FROM	DATE	CN. NO.	DRAFTS	CHECKER	ENG. APP.

TOLERANCES		SCALE:	
ALL DIMS ±	DEC. DIM. ±	DRILL, PUNCH, COMMERCIAL STOCK	
OTHERS ±	FRAC. DIM. ± 1/64	SIZES AND MANUFACTURERS	
	ANGULAR DIM. ±	TOLERANCES ARE NOT INCLUDED.	

1	NF-104	170	A-847	10-7-54
REQ. PER UNIT	MODEL	PROJECT NO.	ASSY. NO.	DATE

1/8 THK	THE TECHNICAL MATERIEL CORP.		
STOCK SIZE	MAMARONECK, NEW YORK		
PHENOLIC	TERM. BD. ASSEMBLY		
MATERIAL	WEIGHT PER PC.	NF-104	
XXXX LAMINATE	C.D.D. 10-7-54		
TYPE & TEMPER	K2		
HEAT TREAT. SPEC.	A.J.J.		
FINISH & SPEC. NO.	A-846		