

IF IT IS FOUND DESIRABLE TO CHANGE ANY TOLERANCE OR OTHER DETAIL SPECIFIED ON THIS DRAWING NOTIFY THE PURCHASER PROMPTLY.

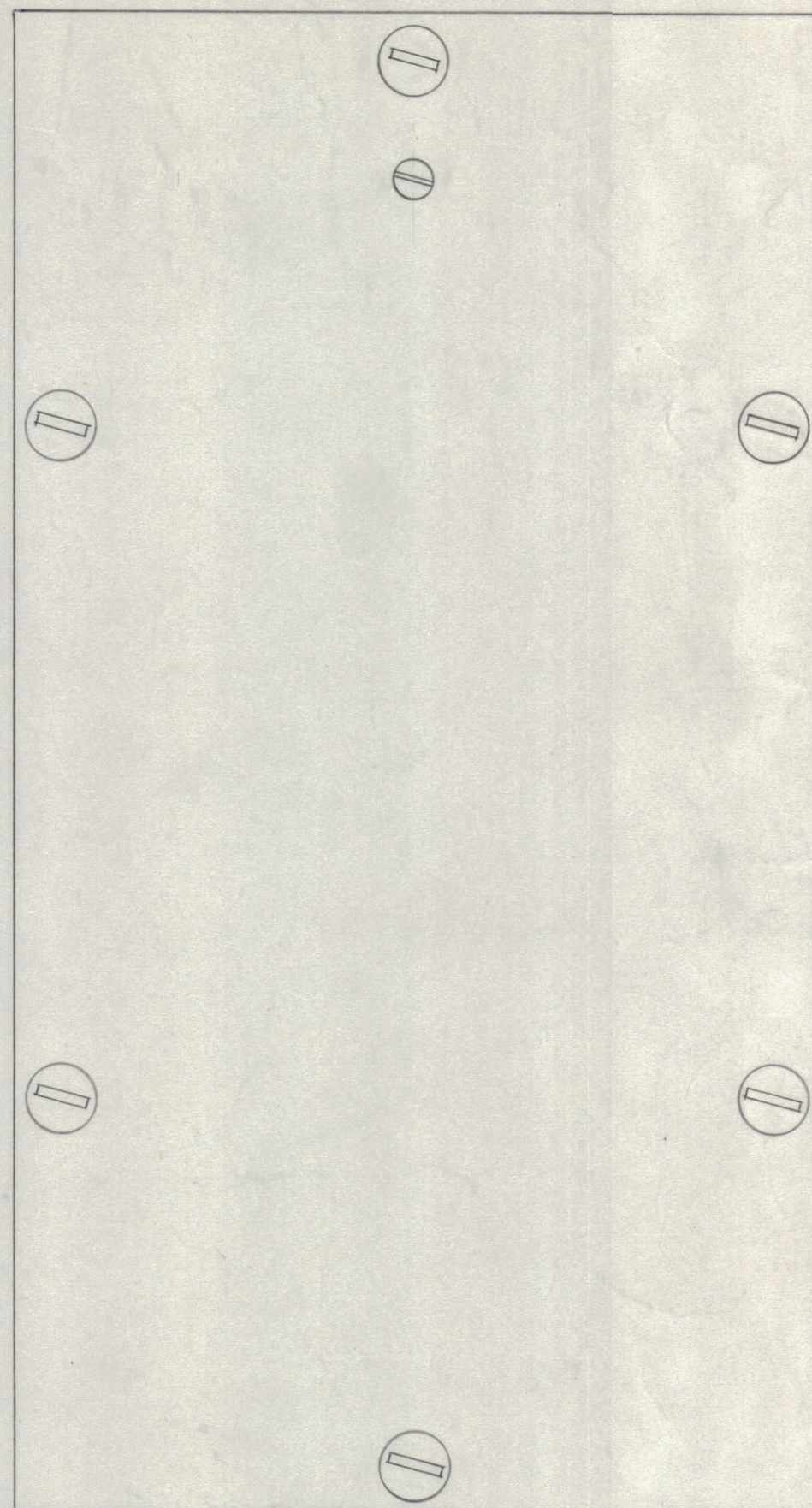
MAXIMUM ALLOWABLE TOLERANCES HAVE BEEN DETERMINED AND DEVIATIONS WILL BE CAUSE FOR REJECTION. REMOVE ALL BURRS AND SHARP EDGES

**NOTICE TO PERSONS RECEIVING THIS DRAWING**

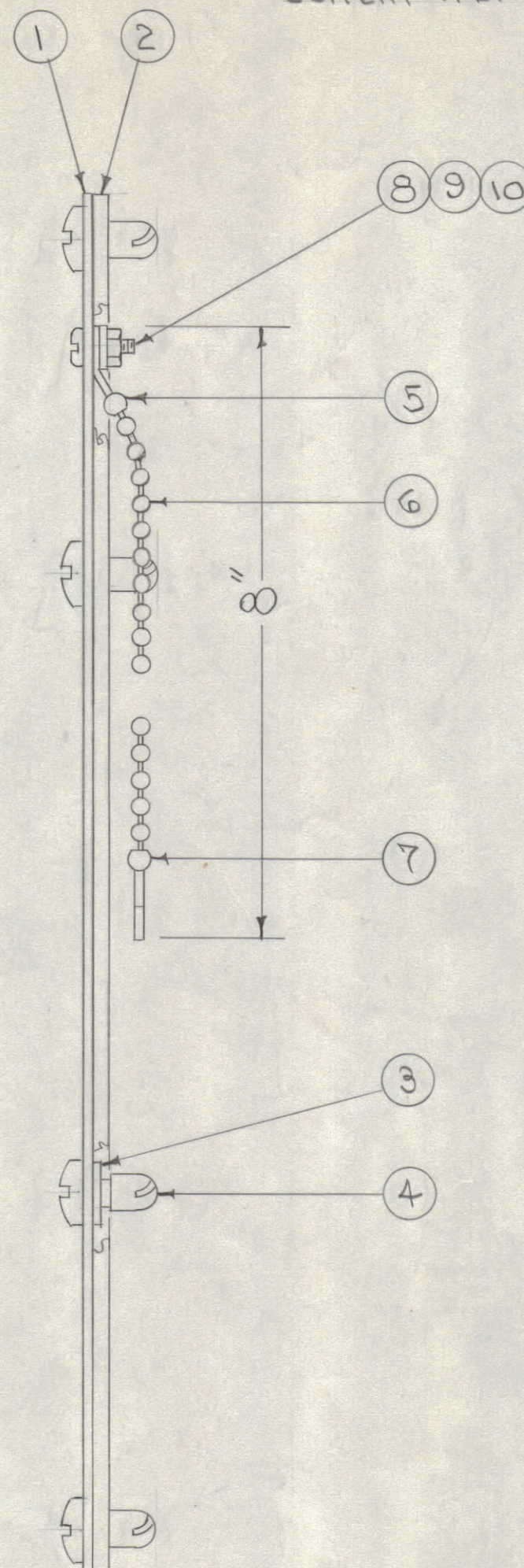
THE TECHNICAL MATERIEL CORPORATION claims proprietary right in the material disclosed hereon. This drawing is issued in confidence for engineering information only and may not be reproduced or used to manufacture anything shown hereon without permission from THE TECHNICAL MATERIEL CORPORATION to the user. This drawing is loaned for mutual assistance and is subject to recall at any time.

Property of:

THE TECHNICAL MATERIEL CORPORATION  
MAMARONECK, NEW YORK



CEMENT ITEM 2 TO ITEM 1 WITH ITEM 11



A-844 A

X	11	GL-101-2	CEMENT, PLIOBOND #30	
1	10	HTHO4A08NG	NUT, HEX	
1	9	LWE04MRN	WASHER, LOCK	
1	8	808P0403N5	SCREW, MACHINE	
1	7	MS-105-1-S	COUPLING, CHAIN	
SEE ABOVE	6	CT-100-2	BEAD CHAIN	
1	5	MS-105-1-0	COUPLING, CHAIN	
6	4	FS-110-2	STUD, SLOTTED HEAD	
6	3	FS-109-3	RING, STUD RETAINING	
1	2	GA-128	GASKET, REAR DOOR	
1	1	MS-563	DOOR, REAR	
REQ. ITEM		PART NO.	DESCRIPTION	SYMBOL
#			THE TECHNICAL MATERIEL CORP. MAMARONECK, NEW YORK	
STOCK SIZE				
#			REAR DOOR ASSEMBLY	
MATERIAL			C.P. M.O.	
WEIGHT PER PC.				
#				
TYPE & TEMPER			CRD. 10-A-5A	
#			DRAWN	
HEAT TREAT. SPEC.			ELEC. DES. APP. MECH. DES. APP.	
#			CHECKED	
FINISH & SPEC. NO.			FINAL APPROVAL	
			A-844 A	

A	REVISED PT. NO.'S 1, 2, 3, 10	DATE	12/26/66	CN. NO.	16937	DRAFTS	JL	CHECKER	gcb	ENG. APP.	
TOLERANCES											
SCALE:											
ALL OTHERS	DEC. DIM. ±	DRILL, PUNCH, COMMERCIAL STOCK SIZES AND MANUFACTURERS TOLERANCES ARE NOT INCLUDED.									
	FRAC. DIM. ±										
	ANGULAR DIM. ±										

1	C.P. M.O.	285	A841	10-A-5A
REQ. PER UNIT	MODEL	PROJECT NO.	ASS'Y. NO.	DATE
USED ON				