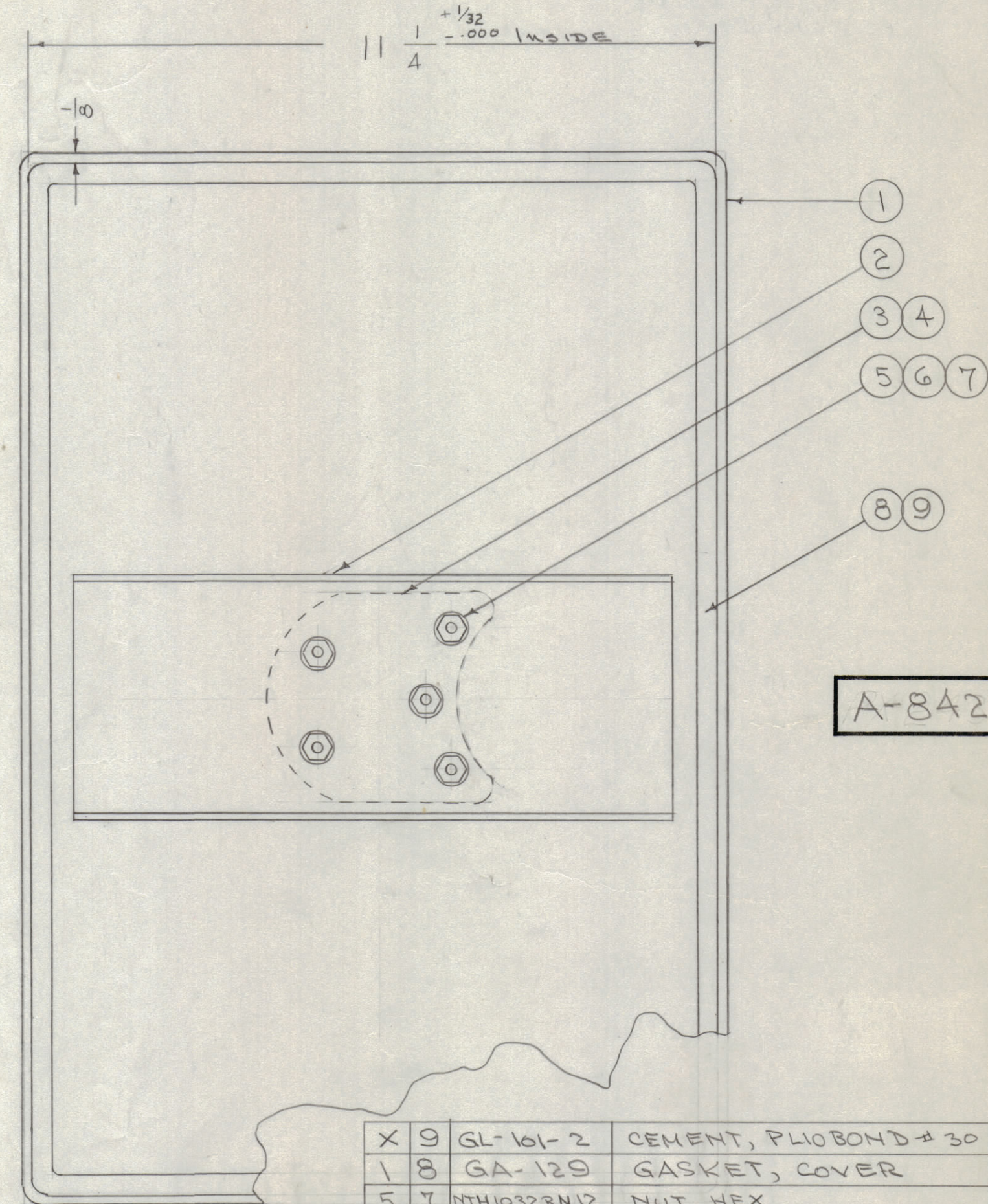
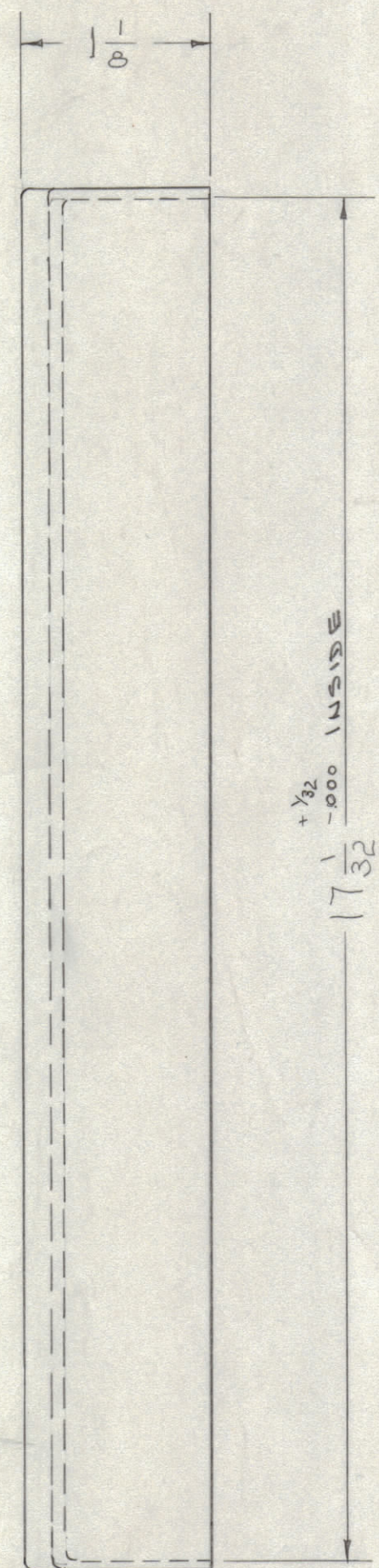
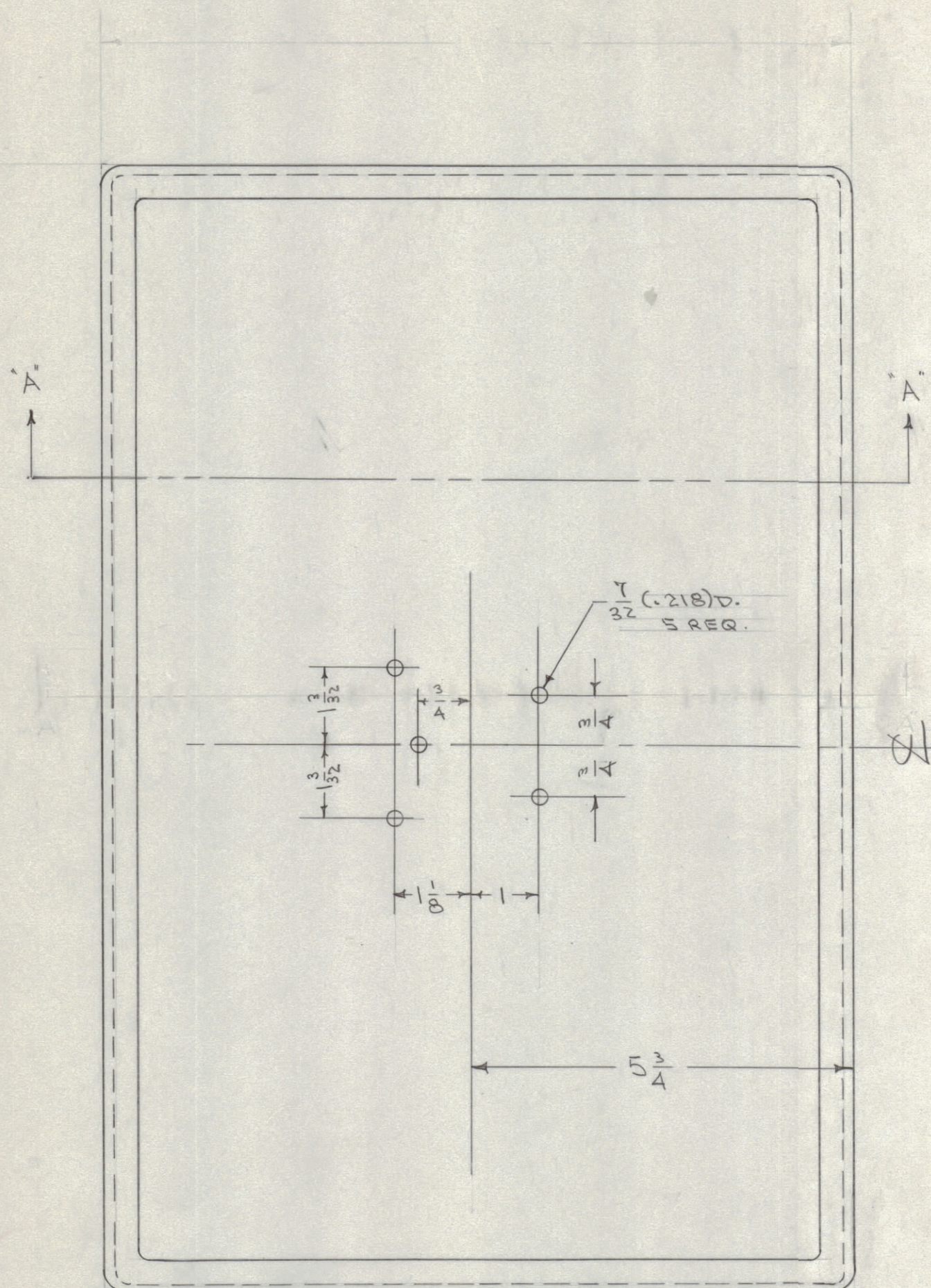


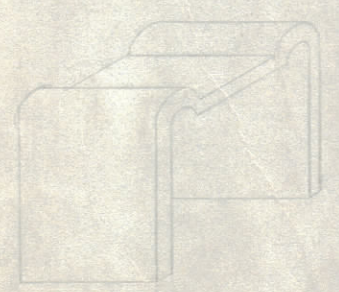
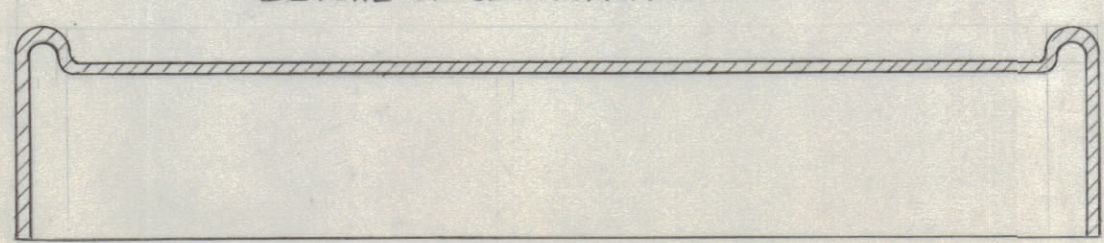
IF IT IS FOUND DESIRABLE TO CHANGE ANY TOLERANCE OR OTHER DETAIL SPECIFIED ON THIS DRAWING NOTIFY THE PURCHASER PROMPTLY.

MAXIMUM ALLOWABLE TOLERANCES HAVE BEEN DETERMINED AND DEVIATIONS WILL BE CAUSE FOR REJECTION. REMOVE ALL BURRS AND SHARP EDGES



A-842 A

DETAIL OF SECTION A-A



X 9	GL-101-2	CEMENT, PLIOBOND # 30	
1 8	GA-129	GASKET, COVER	
5 7	NH1032BN12	NUT, HEX	
5 6	LWE10MRN	WASHER, LOCK	
5 5	SCFP1032BN9	SCREW, MACHINE	
1 4	HA-103	HANDLE	
1 3	GA-124	GASKET, HANDLE	
1 2	MS-566	PLATE, REINFORCING	
1 1	PX-243	COVER (NO DRAWING)	
REQ. ITEM	PART NO.	DESCRIPTION	SYMBOL
—		THE TECHNICAL MATERIEL CORP. MAMARONECK, NEW YORK	
STOCK SIZE		COVER ASSEMBLY	
FIBERGLAS	—	CPMO	
MATERIAL		WEIGHT PER PC.	
—		—	
TYPE & TEMPER		PA. 9-27-54	
—		DRAWN	ELEC. DES. APP. MECH. DES. APP.
HEAT TREAT. SPEC.		—	—
—		CHECKED	FINAL APPROVAL
FINISH & SPEC. NO.		A-842 A	

A	REVISED PT. NO.'S ON IT. 55, 6 & 7.	9/23/62	16937	JL	MM	MM	
ISSUE	ITEM	CHANGED FROM	DATE	CN. NO.	DRAFTS	CHECKER	ENG. APP.
TOLERANCES			SCALE:				
ALL OTHERS	DEC. DIM. ±	FRAC. DIM. ±	1/64	DRILL, PUNCH, COMMERCIAL STOCK SIZES AND MANUFACTURERS TOLERANCES ARE NOT INCLUDED.			

1	CPMO	285	10-4-54
MODEL	PROJECT NO.	ASS'Y. NO.	DATE
USED ON			