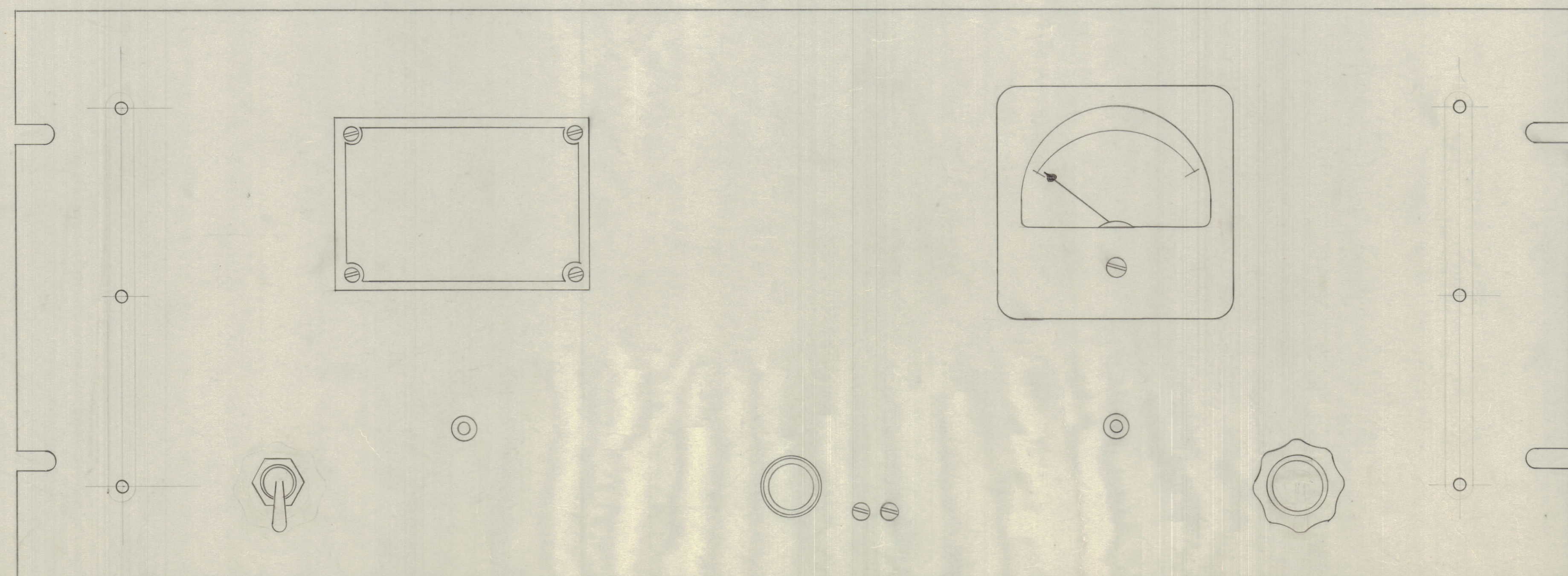
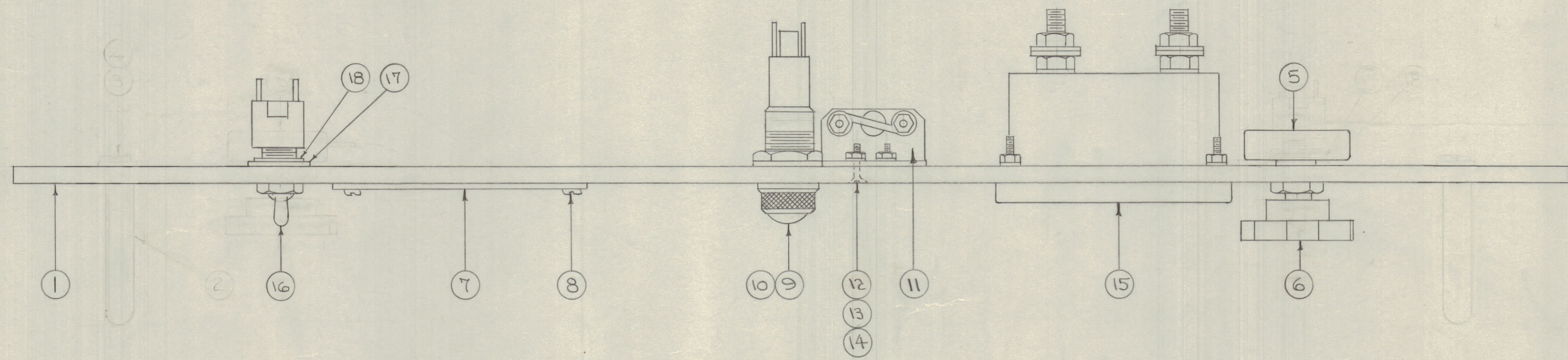
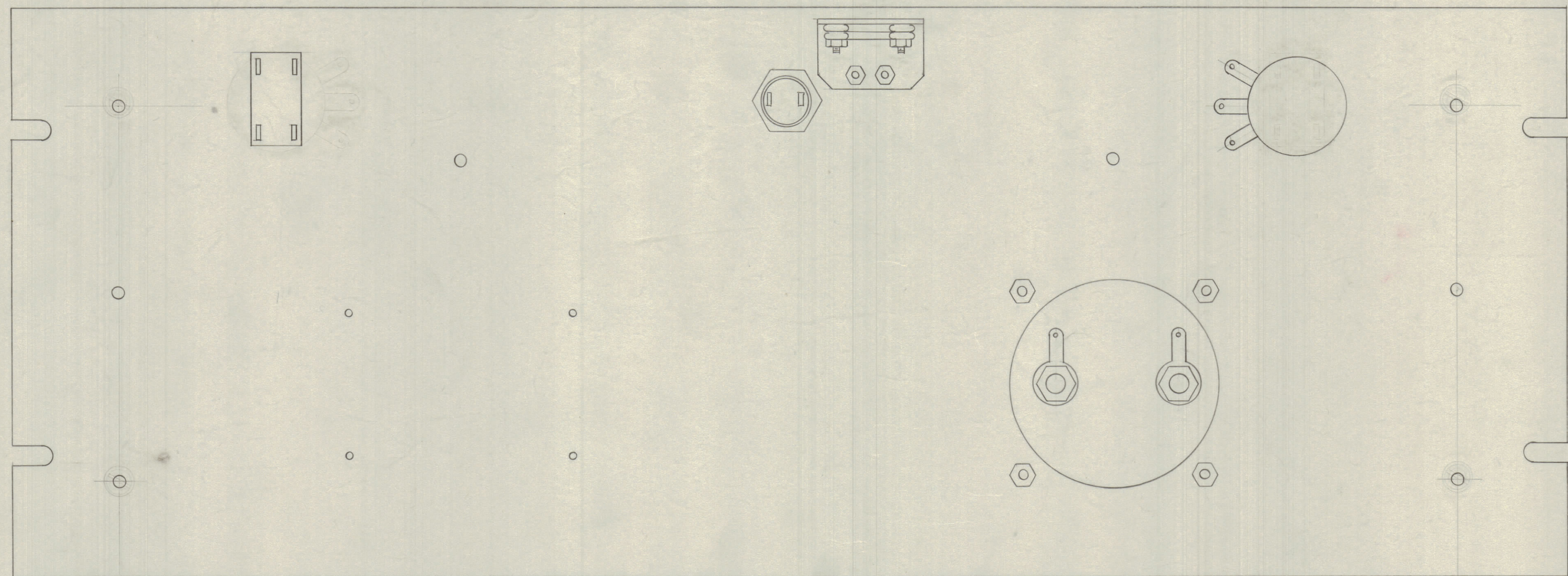


IF IT IS FOUND DESIRABLE TO CHANGE ANY TOLERANCE OR OTHER DETAIL SPECIFIED ON THIS DRAWING NOTIFY THE PURCHASER PROMPTLY.
 MAXIMUM ALLOWABLE TOLERANCES HAVE BEEN DETERMINED AND DEVIATIONS WILL BE CAUSE FOR REJECTION. REMOVE ALL BURRS AND SHARP EDGES



NOTICE TO PERSONS RECEIVING THIS DRAWING
 THE TECHNICAL MATERIEL CORPORATION claims proprietary right in the material disclosed hereon. This drawing is issued in confidence for engineering information only and may not be reproduced or used to manufacture anything shown hereon without permission from THE TECHNICAL MATERIEL CORPORATION to the user. This drawing is loaned for mutual assistance and is subject to recall at any time.
 Property of:
 THE TECHNICAL MATERIEL CORPORATION
 MAMARONECK, NEW YORK

1	18	LWI50LR	WASHER, LOCK	
1	17	WA-100	RING, LOCKING	
1	16	ST 22 K	SWITCH, TOGGLE	SI
1	15	MR-101-2	METER, LEVEL IND.	MI
2	14	NTH040BNG	NUT, HEX	
2	13	LWE04HRN	WASHER, LOCK	
2	12	SCFP040BNG	SCREW, MACHINE	
1	11	A-835	BRACKET ASSY.	
1	10	BI-101-44	LAMP, INCANDESCENT	I 1
1	9	TS-106-1	SOCKET, LENS	XI 1
4	8	SFB0256N3	SCREW, THD CUTTING	
1	7	NP	NAME PLATE (SEE S-278)	
1	6	MP-100-1	KNOB, INST. TYPE	
1	5	RVAATRD501D	RESISTOR, VARIABLE	RT
-	4		DELETED	
-	3		DELETED	
-	2		DELETED	
1	1	MS-402	PANEL, FRONT	

REQ. ITEM	PART NO.	DESCRIPTION	SYMBOL
THE TECHNICAL MATERIEL CORP.			
MAMARONECK, NEW YORK			
FRONT PANEL ASSY.			
MATERIAL	WEIGHT PER PC.	RSM	
TYPE & TEMPER			
CDD 11-12-54			
DRAWN			
ELEC. DES. APP. MECH. DES. APP.			
HEAT TREAT SPEC.			
CHECKED			
FINAL APPROVAL			
A-833 A			

6	RSM-3 DET ADDED (MODEL)						
5	UNIT DRAWING & DIMENSIONS						
4	ITEM (5) WAS SC-110-1	27-63	9200				
3	ITEM (3) WAS LWC00816C (QTY 4)						
2	ITEM (3) WAS S-2500820C (QTY 4)						
1	ITEM (3) WAS HA-102-12 (QTY 1)						
ISSUE	ITEM	CHANGED FROM	DATE	CN. NO.	DRAFTS	CHECKER	ENG. APP.
TOLERANCES		SCALE:					
ALL DEC. DIM. ±		DRILL PUNCH, COMMERCIAL STOCK					
OTHERS FRAC. DIM. ±		SIZES AND MANUFACTURERS					
ANGULAR DIM. ±		TOLERANCES ARE NOT INCLUDED.					

1	RSM-3			6-7-63
1	RSM-2	170	A-840	11-12-54
REQ. PER UNIT	MODEL	PROJECT NO.	ASSY. NO.	DATE
USED ON				

A-833 A