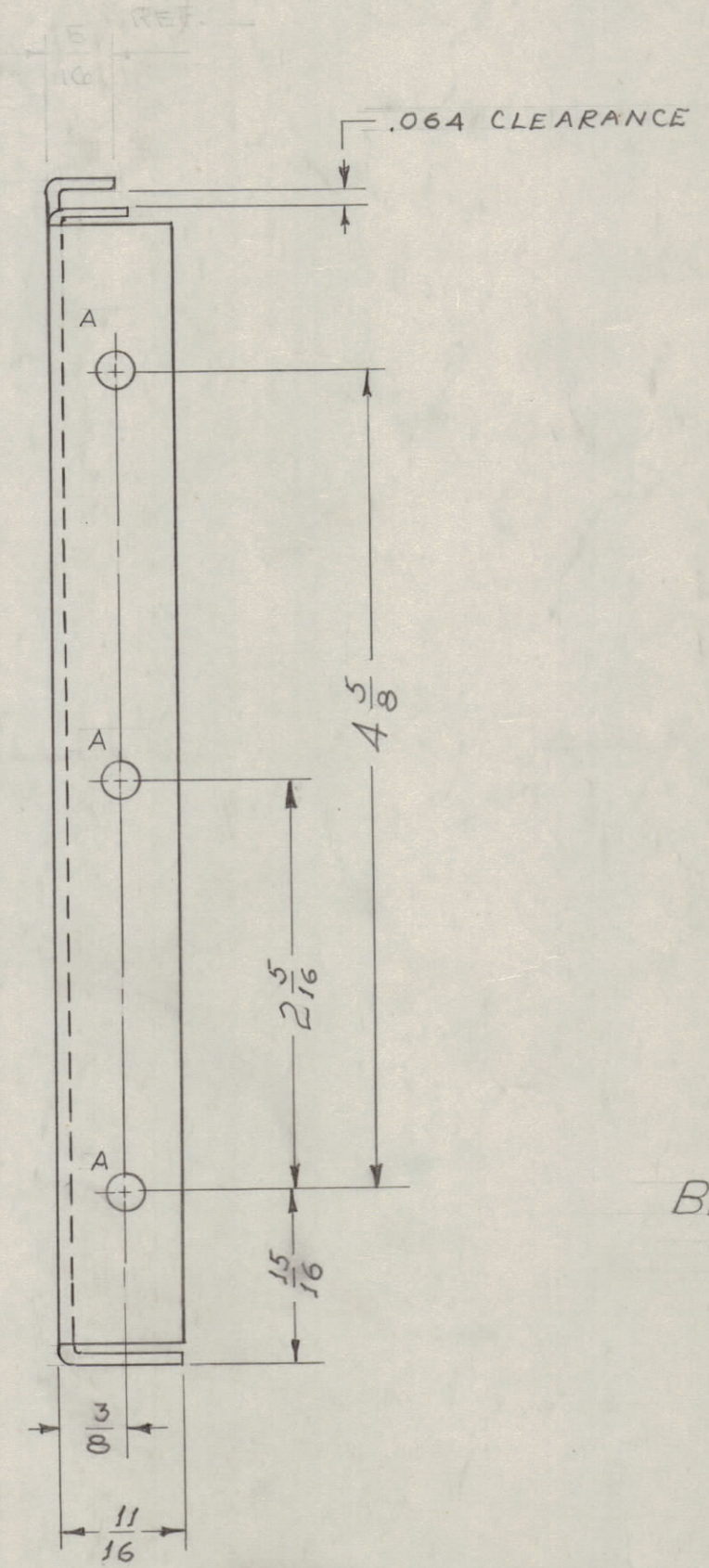
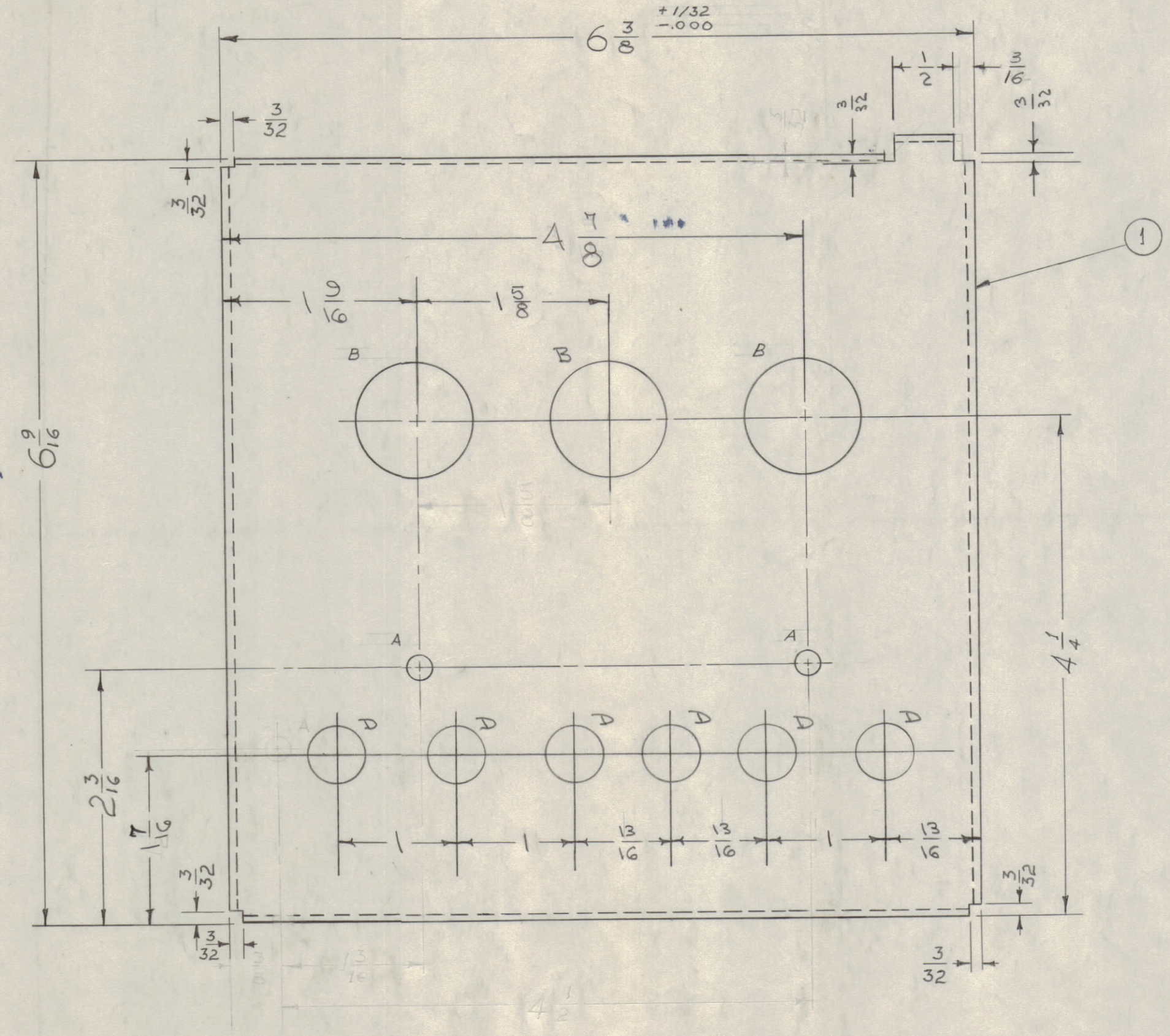
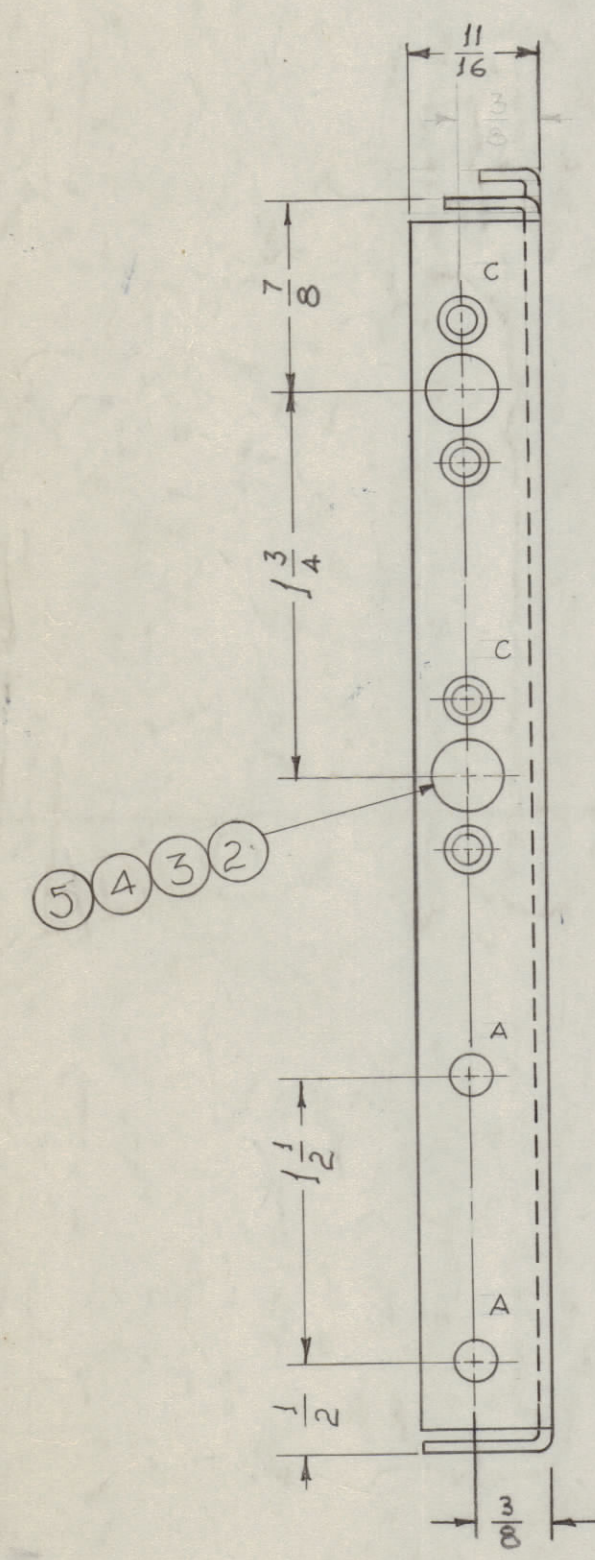
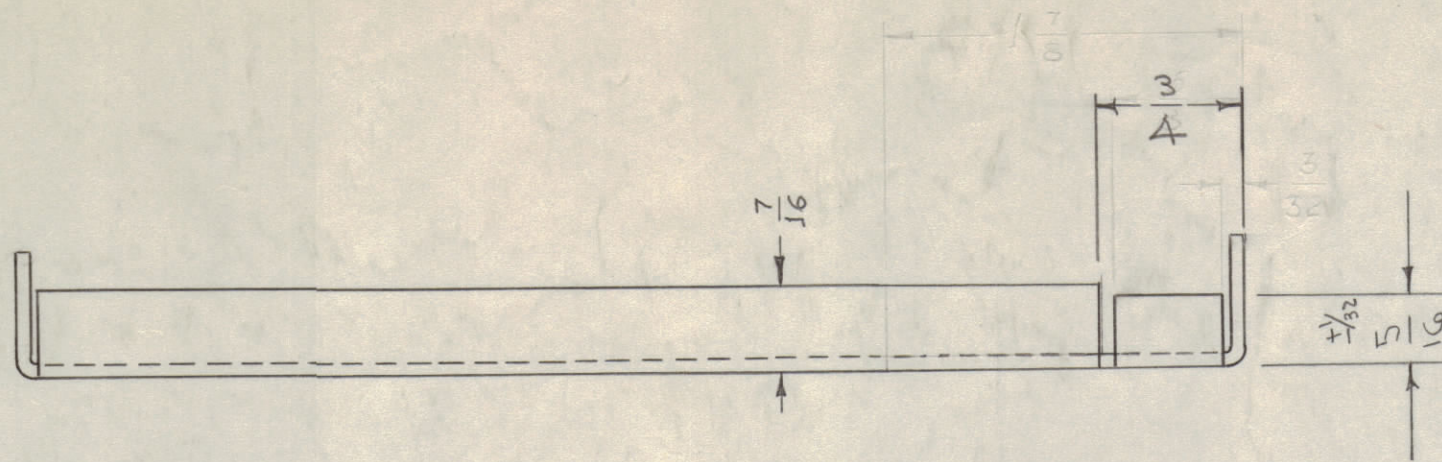
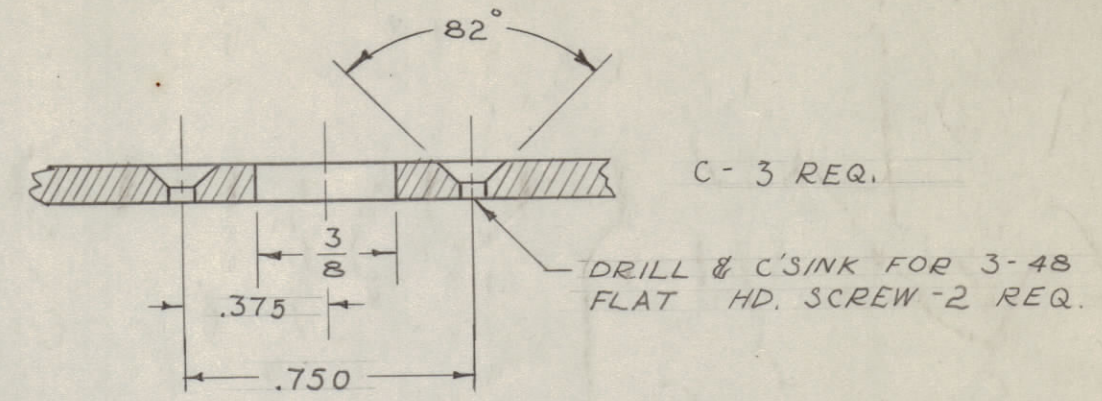


IF IT IS FOUND DESIRABLE TO CHANGE ANY TOLERANCE OR OTHER DETAIL SPECIFIED ON THIS DRAWING NOTIFY THE PURCHASER PROMPTLY.

MAXIMUM ALLOWABLE TOLERANCES HAVE BEEN DETERMINED AND DEVIATIONS WILL BE CAUSE FOR REJECTION. REMOVE ALL BURRS AND SHARP EDGES

A - 13/64 (.203) D. 7 HOLES REQ.
 B - 1 (1.000) D. 3 HOLES REQ.
 D - 1/2 (.500) D. 6 " " "



A-820 B

BLANK SIZE
 7 9/16 x 7 1/2

B	1	5404-YEL-IRIDITE SI 01-CAUSTIC DIP	12 8 59	1001		EMN
A	1	COMPLETE REVISION	11/14	1	ced	gawle
ISSUE	ITEM	CHANGED FROM	DATE	CN. NO.	DRAFTS	CHECKER
TOLERANCES		SCALE:				
ALL OTHERS	DEC. DIM. ±	DRILL, PUNCH, COMMERCIAL STOCK SIZES AND MANUFACTURERS TOLERANCES ARE NOT INCLUDED.				
	FRAC. DIM. ±					
	ANGULAR DIM. ±					

RSC-2 (A,B,C,D,E)	170	11-1-54
MODEL	PROJECT NO.	ASS'Y. NO.
		DATE

6	5	NTH0348BC6	NUT HEX	
6	4	LWS03MRC	LOCKWASHER, SPLIT	
6	3	SCFS0348BC4	SCREW MACHINE	
3	2	FS-102-1	SPRING CLIP (2" HOLE)	
1	1	MS-581	LEFT SIDE PLATE (NO DWG)	
REQ. ITEM	PART NO.	DESCRIPTION		SYMBOL
.064		THE TECHNICAL MATERIEL CORP.		
STOCK SIZE		MAMARONECK, NEW YORK		
ALUMINUM		LEFT SIDE PLATE		
MATERIAL		MODEL RSC-2		
52S - H32				
TYPE & TEMPER		NS. 9-14-54	K2	AK. 11/15/54
		DRAWN	ELEC. DES. APP.	MECH. DES. APP.
		JAID. 11/15/54	A. J. J.	LDK
HEAT TREAT. SPEC.		CHECKED	FINAL APPROVAL	
5404 YEL IRIDITE		SUPERCEDES		A-820
FINISH & SPEC. NO.		RSC-1		B