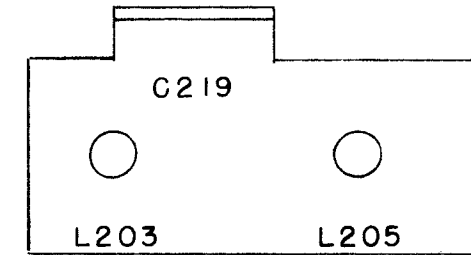


IF IT IS FOUND DESIRABLE TO CHANGE ANY TOLERANCE OR OTHER DETAIL SPECIFIED ON THIS DRAWING NOTIFY THE PURCHASER PROMPTLY.

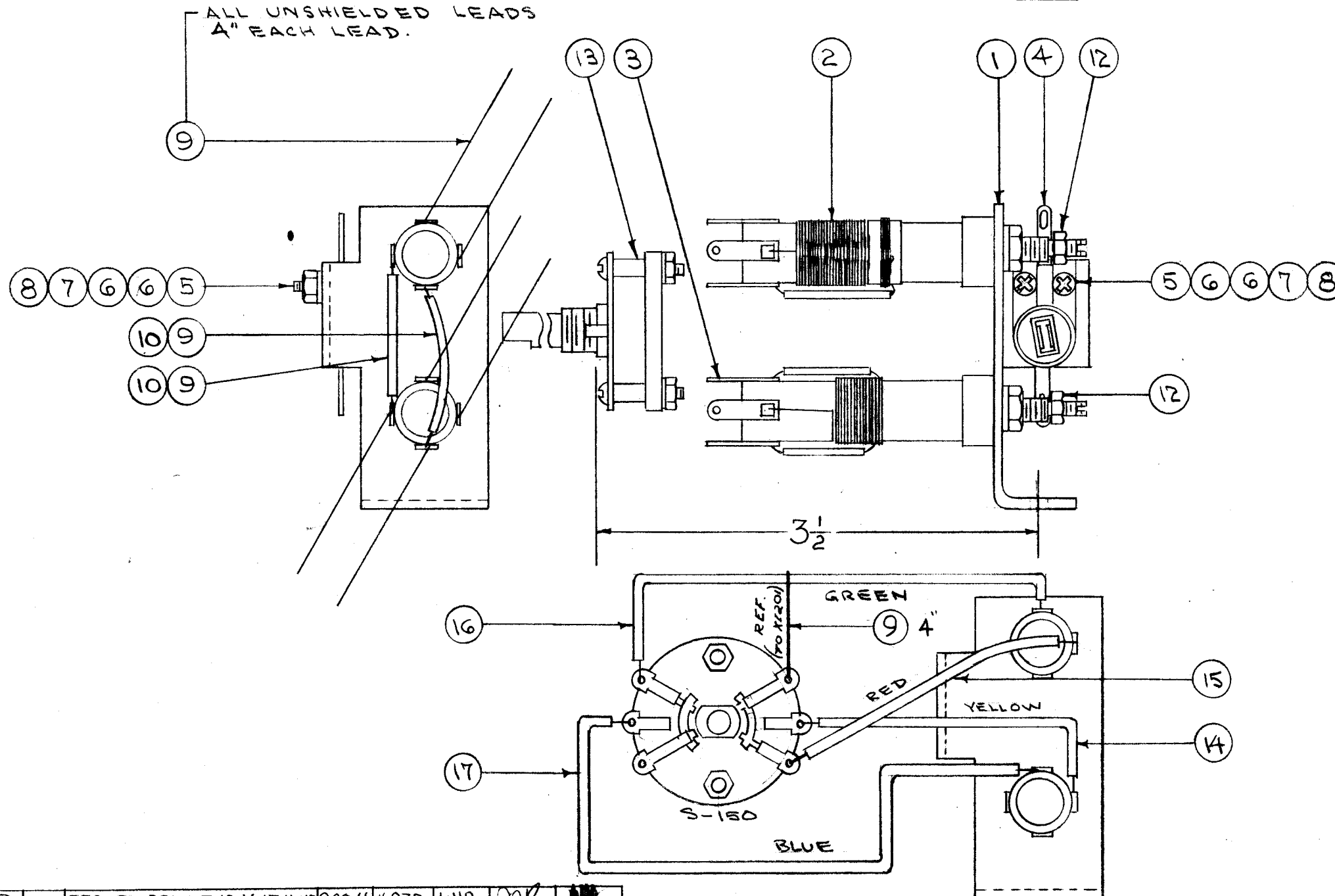
MAXIMUM ALLOWABLE TOLERANCES HAVE BEEN DETERMINED AND DEVIATIONS WILL BE CAUSE FOR REJECTION. REMOVE ALL BURRS AND SHARP EDGES

A-819 C

MARKING PROCESS: AS PER TMC SPECIFICATION S-727



STAMP BRACKET AS ABOVE
1/8 HIGH BLACK GOTHIC



1"	17	PX-104-6-034	INSULATION, SLEEVING (BLUE)	
7/8"	16	PX-104-4-034	" " (GRN.)	
1"	15	PX-104-3-034	" " (RED)	
1 3/4"	14	PX-104-2-034	" " (YEL)	
1	13	SW-150	SWITCH, ROTARY	
2	12	NTH0632BN10	NUT, HEX	
X	11	BS-100	SOLDER SOFT	
2 3/8"	10	PX-104-1-022	INSULATION, SLEEVING (BLK.)	
3/4"	9	WL-100-7	WIRE, BUSS BAR 22 GA.	
2	8	NTH0440BNG	NUT, HEX	
2	7	LWE04MRN	WASHER, LOCK	
4	6	WA-109-17	WASHER, FIBER	
2	5	SCBP0440BNG	SCREW, MACHINE	
1	4	CV11C450	CAPACITOR, VARIABLE	C219
1	3	A-246	INDUCTOR, "	L205
1	2	A-245	" "	L203
1	1	MS-544	BRACKET, TUNING COIL	

REQ.	ITEM	PART NO.	DESCRIPTION	SYMBOL
#				
STOCK SIZE				
#				
MATERIAL WEIGHT PER PC.				
#				
TYPE & TEMPER				
#				
HEAT TREAT. SPEC.				
#				
FINISH & SPEC. NO.				

THE TECHNICAL MATERIEL CORP. MAMARONECK. NEW YORK		
COIL BRACKET ASSEMBLY		
PMO		
C.O.D. 9-10-54		
DRAWN	ELEC. DES. APP.	MECH. DES. APP.
<i>J.H.D. 10/24/54</i>		<i>W.E.</i>
CHECKED	FINAL APPROVAL	
	A-819 C	

SWITCH WIRING DETAIL
SEE SIDE VIEW ABOVE
FOR POSITION OF SW.

C	DEC. PT. DEL FR 10,14,15,16,17	9,20,46	16870	WHO	<i>W.E.</i>	<i>W.E.</i>
B	HOWR UPDATED & STANDARDIZED ITEM (A) WAS CV11C450	65-63	9159	<i>W.E.</i>	<i>W.E.</i>	<i>W.E.</i>
A	3 1/2 DIM. ADDED	11-154	1	<i>W.E.</i>	<i>W.E.</i>	<i>W.E.</i>

ISSUE	ITEM	CHANGED FROM	DATE	CN. NO.	DRAFTS	CHECKER	ENG. APP.

TOLERANCES	SCALE:
DEC. DIM. ±	DRILL, PUNCH, COMMERCIAL STOCK
FRAC. DIM. ±	SIZES AND MANUFACTURERS
ANGULAR DIM. ±	TOLERANCES ARE NOT INCLUDED.

REQ. PER UNIT	MODEL	PROJECT NO.	ASSY. NO.	DATE
1	PMO-4,56	285		5-22-63
1	PMO-2	285		9-10-54
1	PMO-1	285		9-10-54

USED ON