

IF IT IS FOUND DESIRABLE TO CHANGE ANY TOLERANCE OR OTHER DETAIL SPECIFIED ON THIS DRAWING NOTIFY THE PURCHASER PROMPTLY.

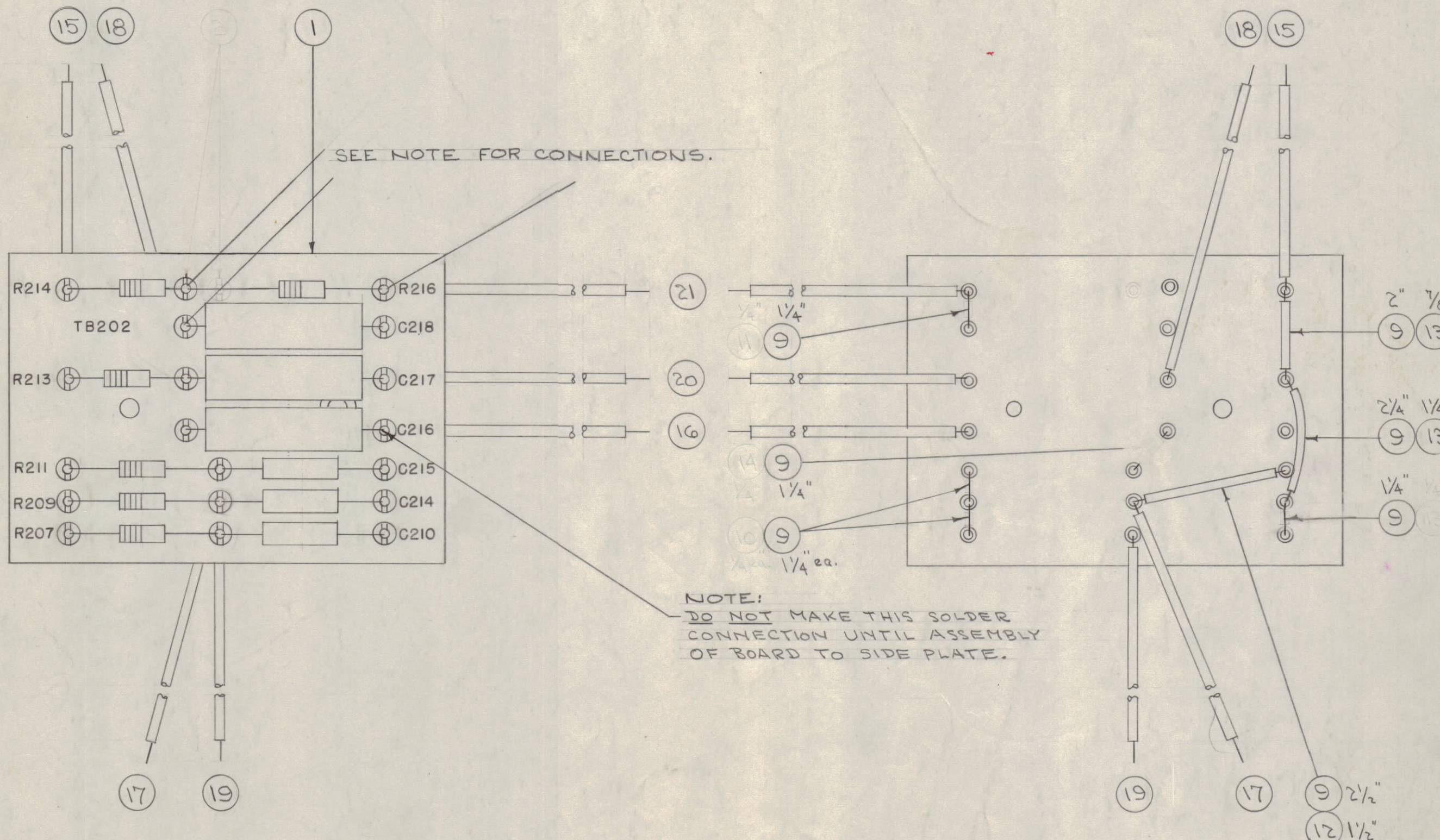
MAXIMUM ALLOWABLE TOLERANCES HAVE BEEN DETERMINED AND DEVIATIONS WILL BE CAUSE FOR REJECTION. REMOVE ALL BURRS AND SHARP EDGES

NOTICE TO PERSONS RECEIVING THIS DRAWING

THE TECHNICAL MATERIEL CORPORATION claims proprietary right in the material disclosed hereon. This drawing is issued in confidence for engineering information only and may not be reproduced or used to manufacture anything shown hereon without permission from THE TECHNICAL MATERIEL CORPORATION to the user. This drawing is loaned for mutual assistance and is subject to recall at any time.

Property of:

THE TECHNICAL MATERIEL CORPORATION
MAMARONECK, NEW YORK



SEE NOTE FOR CONNECTIONS.

NOTE:
DO NOT MAKE THIS SOLDER CONNECTION UNTIL ASSEMBLY OF BOARD TO SIDE PLATE.

WIRE LENGTHS SHOWN FOR WIRE ARE TOTAL LENGTHS AND ALLOW 3/4" EACH END FOR STRIPPING

1	23	RC20GF105J	RESISTOR, FIXED	R209
X	22	BS-100	SOLDER, SOFT	

A-818 F

6 1/2"	21	MWC22(7)U96	WIRE, ELECTRICAL (WH/BLUE)	
7"	20		(WH/GRN.)	
4 1/2"	19		(WH/GRN.)	
8 1/4"	18		(BLUE)	
4 1/2"	17		(BLUE)	
6 1/4"	16		(GRN.)	
9 1/4"	15	MWC22(7) U 2	WIRE, ELECTRICAL (RED)	
	14		DELETED	
2 3/8"	13	PX-104-5-034	INSULATION, SLEEVING (BRN.)	
1 1/2"	12	-4-	(GRN.)	
1 1/4"	11	-2-	(YEL.)	
1 1/2"	10	PX-104-1-034	INSULATION, SLEEVING (BLK.)	
9 1/4"	9	WL-100-7	WIRE, BUSS BAR 22 GA.	
	8	RC42GF823J	RESISTOR, FIXED	R216
	7	RC20GF563J		R214
	6	224J		R213
	5	104J		R207
	4	CN-100-4	CAPACITOR, FIXED	R209
	3	CM20F102603		R207
	2	#	#	R207
	1	A-1535	TERM. BD., MIXER	

F		IT 3 WAS CM20B102K IT 5-8+23 TOL WAS K DEC. PT DEL FR 10413	9-20-66	16870	WHO	QPO	MMA
E	1	IN BUND-UP ITEMS 10-13 -039 WAS -022	7-19-63	9544	AK.	ML	JWB
D	2	ITEMS (15) THRU (21) PART NOS UPDATED ITEMS (02)(11)(12)(13) PART NO. CLARIFIED	5-23-63	9095	RE	SMY	JWB
C	1	DELETED ITEM 14 PX-104-6-022 INSUL. SLEEVING	5/7/52	417	OR	JWB	JWB
B	2	ITEM 2 WAS TE-109-3	5/8/58	2	JWB	AK.	
A	1	ITEM 1 WAS PX-234 R208 DELETED, ERROR					
A	2	R209 ADDED (ITEM 23) INSULATION REMOVED ON SMALL JUMPERS	4-		SC	MO	A.J.D.
A	1	ITEM 8 WAS RC20GF823K	57				

ISSUE	ITEM	CHANGED FROM	DATE	CN. NO.	DRAFTS	CHECKER	ENG. APP.
		TOLERANCES		SCALE:			
ALL OTHERS		DEC. DIM. ± FRAC. DIM. ± ANGULAR DIM. ±	DRILL, PUNCH, COMMERCIAL STOCK SIZES AND MANUFACTURERS TOLERANCES ARE NOT INCLUDED.				

1	PMO-2	285		9-8-54
1	PMO-1	285		9-8-54
REQ. PER UNIT	MODEL	PROJECT NO.	ASS'Y. NO.	DATE
USED ON				

REQ.	ITEM	PART NO.	DESCRIPTION	SYMBOL
THE TECHNICAL MATERIEL CORP. MAMARONECK, NEW YORK				
STOCK SIZE				
TERMINAL BOARD ASSY.				
MATERIAL		WEIGHT PER PC.		
TB-202		PMO		
TYPE & TEMPER				
CDD. 9-8-54		WDE		
HEAT TREAT. SPEC.				
JWB		WDE		
FINISH & SPEC. NO.				
A-818				F