

IF IT IS FOUND DESIRABLE TO CHANGE ANY TOLERANCE OR OTHER DETAIL SPECIFIED ON THIS DRAWING NOTIFY THE PURCHASER PROMPTLY.

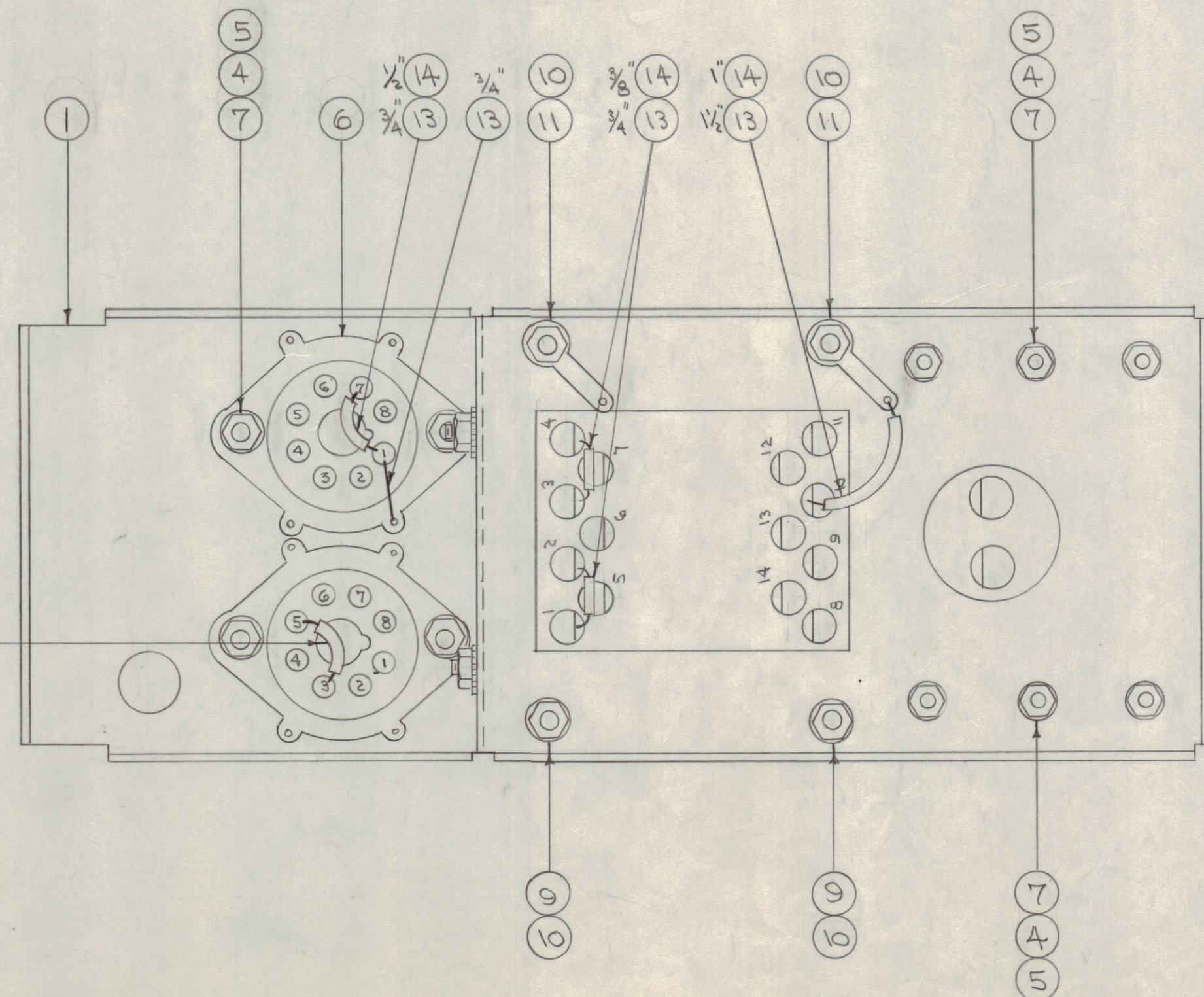
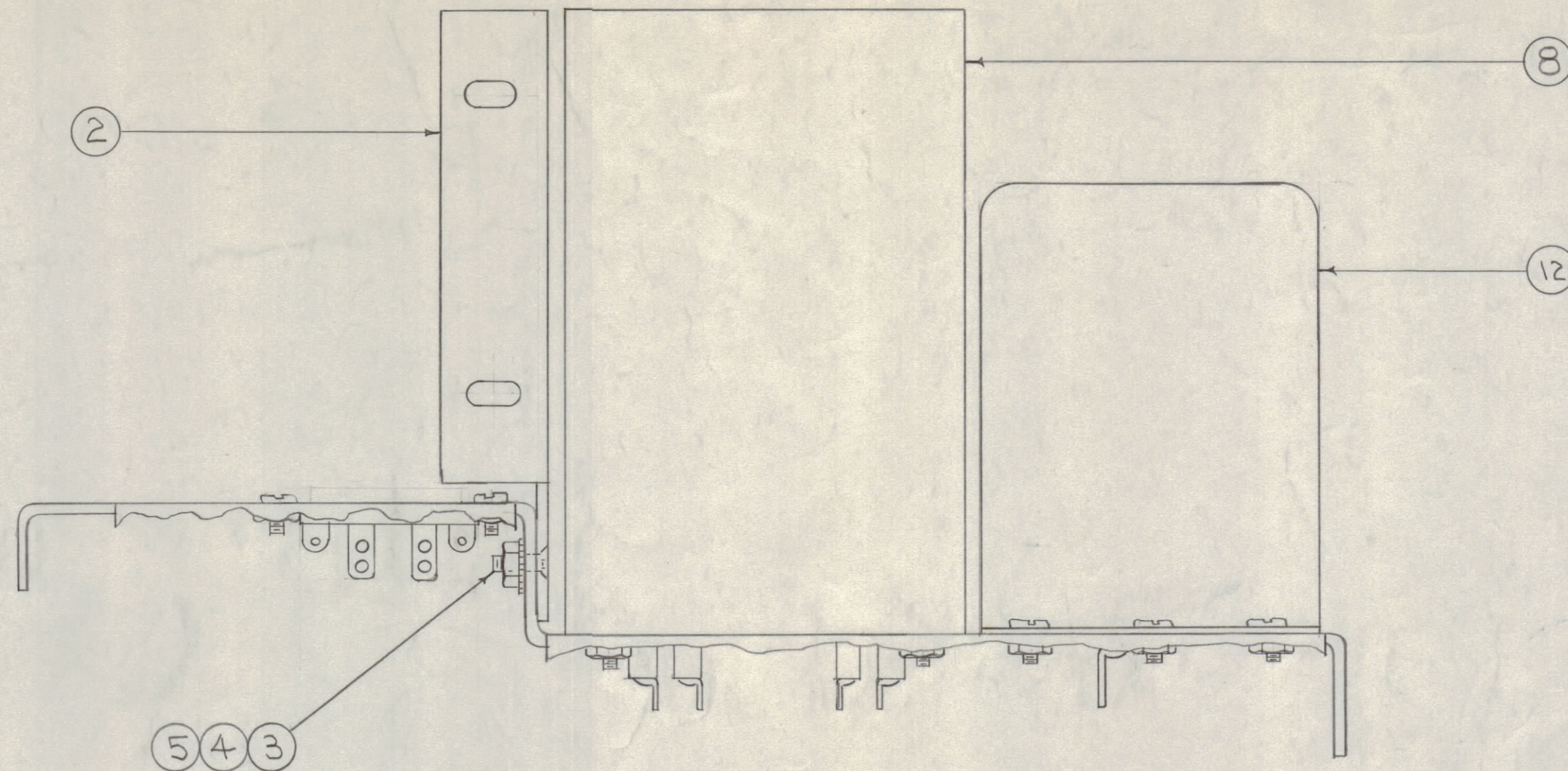
MAXIMUM ALLOWABLE TOLERANCES HAVE BEEN DETERMINED AND DEVIATIONS WILL BE CAUSE FOR REJECTION. REMOVE ALL BURRS AND SHARP EDGES

NOTICE TO PERSONS RECEIVING THIS DRAWING

THE TECHNICAL MATERIEL CORPORATION claims proprietary right in the material disclosed hereon. This drawing is issued in confidence for engineering information only and may not be reproduced or used to manufacture anything shown hereon without permission from THE TECHNICAL MATERIEL CORPORATION to the user. This drawing is loaned for mutual assistance and is subject to recall at any time.

Property of:

THE TECHNICAL MATERIEL CORPORATION
MAMARONECK, NEW YORK



A-814 A

X	15	BS-100	SOLDER, SOFT (ALL CONNECTIONS)	
2 3/4"	14	PX-104-1-022	INSULATION, SLEEVING (BWK.)	
5/4"	13	WL-100-7	WIRE, BUSS BAR 22 GA.	
1	12	TF-5000	CHOKE	L-101
2	11	TE-104-3	TERMINAL, LOCKING	
4	10	NTH08328N10	NUT, HEX.	
2	9	LWE08MRN	WASHER, LOCK	
1	8	TF-106	TRANSFORMER	T-101
10	7	SCFP0632BN4	SCREW, MACHINE	
2	6	TS-101-P01	SOCKET, OCTAL	
12	5	NTH06328N8	NUT, HEX	
12	4	LWE06MRN	WASHER, LOCK	
2	3	SCFP0632BN4	SCREW, MACHINE	
1	2	MS-555	SUPPORT, POWER SUPPLY	
1	1	MS-534	CHASSIS, POWER SUPPLY	LD-956

REQ. ITEM	PART NO.	DESCRIPTION	SYMBOL
#			
STOCK SIZE			
#		#	
MATERIAL		WEIGHT PER PC.	
#		#	
TYPE & TEMPER			
#		#	
HEAT TREAT. SPEC.			
#		#	
FINISH & SPEC. NO.			

A	1	B/M CHART UPDATED	12/16/54	13329	REV.	9/13	
ISSUE	ITEM	CHANGED FROM	DATE	CN. NO.	DRAFTS	CHECKER	ENG. APP.
TOLERANCES							
DEC. DIM. ±				DRILL, PUNCH, COMMERCIAL STOCK			
FRAC. DIM. ±				SIZES AND MANUFACTURERS			
ANGULAR DIM. ±				TOLERANCES ARE NOT INCLUDED.			

1	PMO-2	285		9-3-54
1	PMO-1	285		9-3-54
PREP. UNIT	MODEL	PROJECT NO.	ASSY. NO.	DATE
USED ON				