

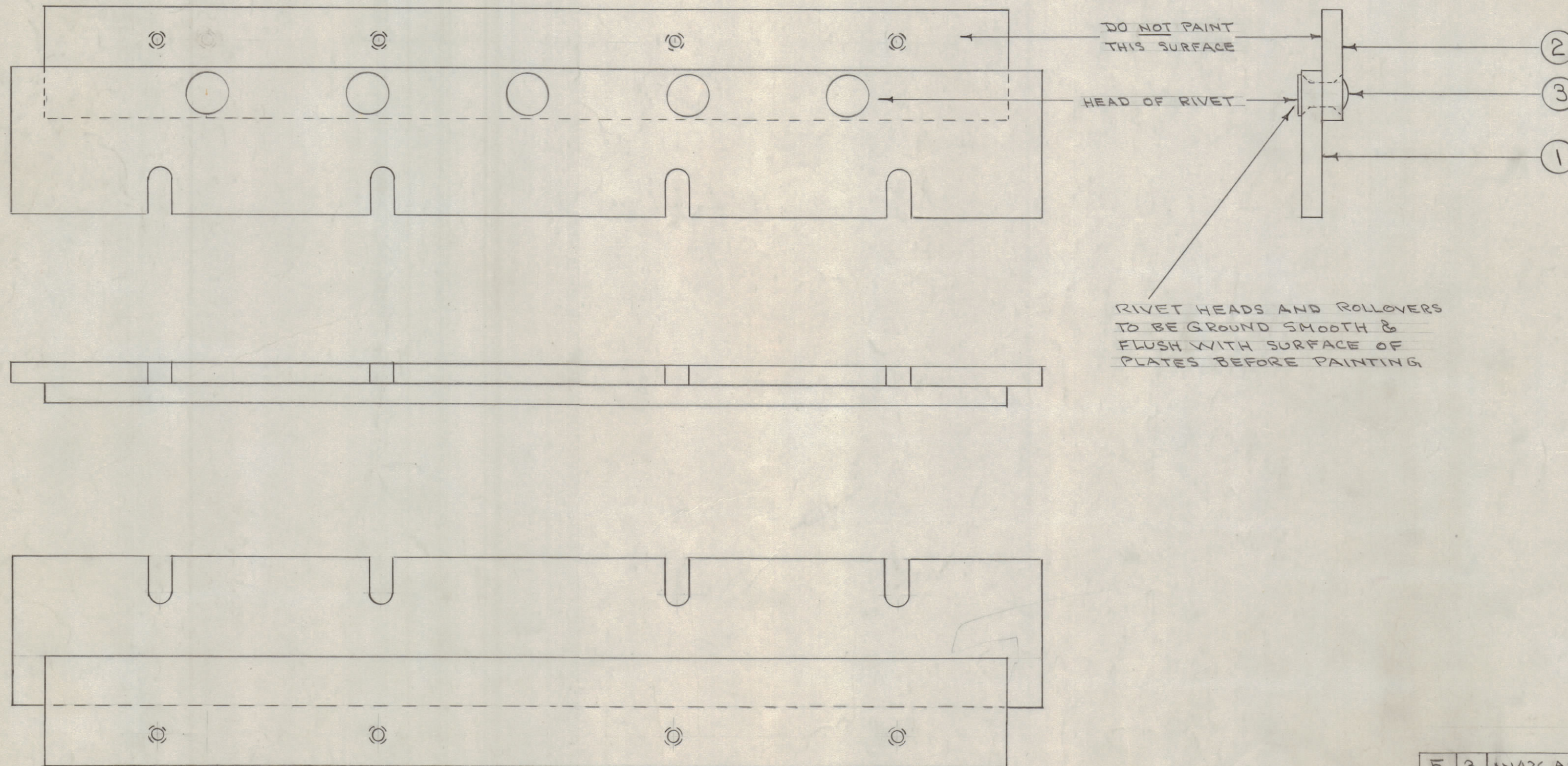
IF IT IS FOUND DESIRABLE TO CHANGE ANY TOLERANCE OR OTHER DETAIL SPECIFIED ON THIS DRAWING NOTIFY THE PURCHASER PROMPTLY.

MAXIMUM ALLOWABLE TOLERANCES HAVE BEEN DETERMINED AND DEVIATIONS WILL BE CAUSE FOR REJECTION. REMOVE ALL BURRS AND SHARP EDGES

**NOTICE TO PERSONS RECEIVING THIS DRAWING**

THE TECHNICAL MATERIEL CORPORATION claims proprietary right in the material disclosed hereon. This drawing is issued in confidence for engineering information only and may not be reproduced or used to manufacture any thing shown hereon without permission from THE TECHNICAL MATERIEL CORPORATION to the user. This drawing is loaned for mutual assistance and is subject to recall at any time.

Property of:  
THE TECHNICAL MATERIEL CORPORATION  
MAMARONECK, NEW YORK



ALL OVER, EXCEPT ONE SURFACE AS SHOWN ABOVE

NOTE - FINISH  
S404 YEL-IRIDITE  
S-114 ZINC CHROMATE PRIMER  
S-115 SMOOTH GREY ENAMEL  
OR PRIME & PAINT TO CUSTOMERS SPECIFICATION

ISSUE	ITEM	CHANGED FROM	DATE	CN. NO.	DRAFTS	CHECKER	ENG. APP.
B	1	S404 IRIDITE WAS SLOI CAUSTIC DIP	12-9-59	1001	4		EMN
A	2	COMPLETE REVISION	10/10/54	1	C.D.D.	J.H.S.	
	1	REDRAWN					

TOLERANCES		SCALE:
ALL OTHERS	DEC. DIM. ± FRAC. DIM. ± ANGULAR DIM. ±	DRILL, PUNCH, COMMERCIAL STOCK SIZES AND MANUFACTURERS TOLERANCES ARE NOT INCLUDED.

2	A-804			10-19-54
REQ. PER UNIT	MODEL	PROJECT NO.	ASS'Y. NO.	DATE

5	3	AN426A8-9	RIVET	
1	2	MS-557	PANEL, REAR EXT.	
1	1	MS-556	" , FRONT "	
REQ. ITEM	PART NO.		DESCRIPTION	SYMBOL
STOCK SIZE				
MATERIAL				WEIGHT PER PC.
TYPE & TEMPER				
HEAT TREAT. SPEC.				
FINISH & SPEC. NO.				

THE TECHNICAL MATERIEL CORP.  
MAMARONECK, NEW YORK

PANEL EXTENSION ASSY.

CDP. 10/19/54

DRAWN: J.H.S. ELEC. DES. APP. MECH. DES. APP.

CHECKED: J.H.S. FINAL APPROVAL

A-807 B