

IF IT IS FOUND DESIRABLE TO CHANGE ANY TOLERANCE OR OTHER DETAIL SPECIFIED ON THIS DRAWING NOTIFY THE PURCHASER PROMPTLY.

A-824 A

MAXIMUM ALLOWABLE TOLERANCES HAVE BEEN DETERMINED AND DEVIATIONS WILL BE CAUSE FOR REJECTION. REMOVE ALL BURRS AND SHARP EDGES

REQ
PER
UNIT

USED ON

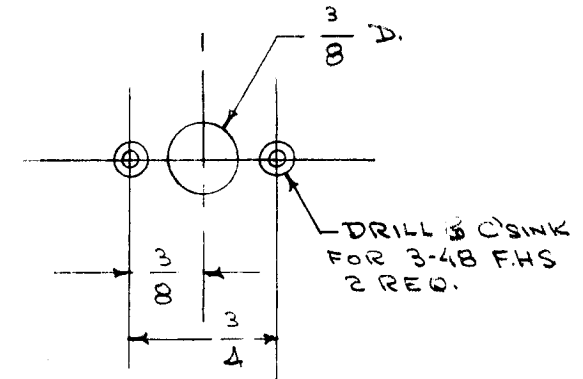
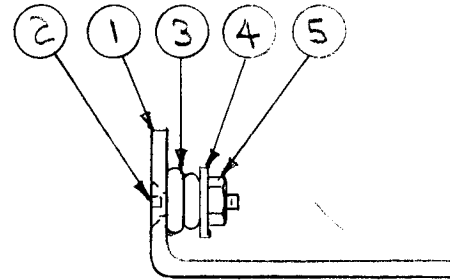
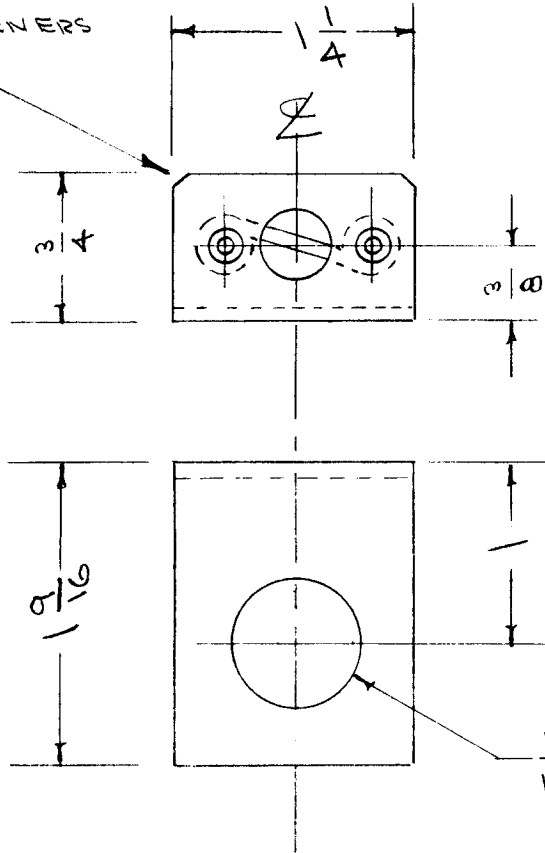
MODEL

PROJECT NO.

ASS'Y. NO.

DATE

NICK 2 CORNERS
1/16



REQ.	ITEM	PART NO.	DESCRIPTION	SYMBOL
1	5	NTH034RBC6	NUT, HEX	
1	4	LWS03MRC	WASHER, LOCK	
1	3	FS-102-1	SPRING, "S" TYPE	
1	2	SCFS034RBC4	SCREW, MACHINE	
1	1	MS-562	BRACKET, (NO DWG)	
		.064	THE TECHNICAL MATERIEL CORP.	
		STOCK SIZE	MAMARONECK, NEW YORK	
ALUMINUM		#	BRACKET ASSY., COVER	
MATERIAL		WEIGHT PER PC.		
52 S-H-32				
TYPE & TEMPER		CO.D. 9/11/54	KZ	WJC
#		DRAWN	ELEC. DES. APP.	MECH. DES. APP.
HEAT TREAT. SPEC.		WJC	ATT	WJC
S404 IRIDITE		CHECKED	FINAL APPROVAL	
FINISH & SPEC. NO.				A-824 A

A	1	FIN: S404 IRIDITE WAS CAUSPIC D1D	12-4 59	1001	P	EMN
ISSUE	ITEM	CHANGED FROM	DATE	CN. NO.	DRAFTS CHECKER	ENG. APP.

TOLERANCES		SCALE
ALL OTHERS	DEC. DIM. ± FRAC. DIM. ± 1/64 ANGULAR DIM. ±	DRILL, PUNCH, COMMERCIAL STOCK SIZES AND MANUFACTURERS TOLERANCES ARE NOT INCLUDED.

REQ. PER UNIT	USED ON		
	MODEL	ASS'Y. NO.	DATE
1	PMO-1		7-23-54
1	PMO-2		"
1	RTF		4/17/56
1	RTF-2	F/P	11/20/58

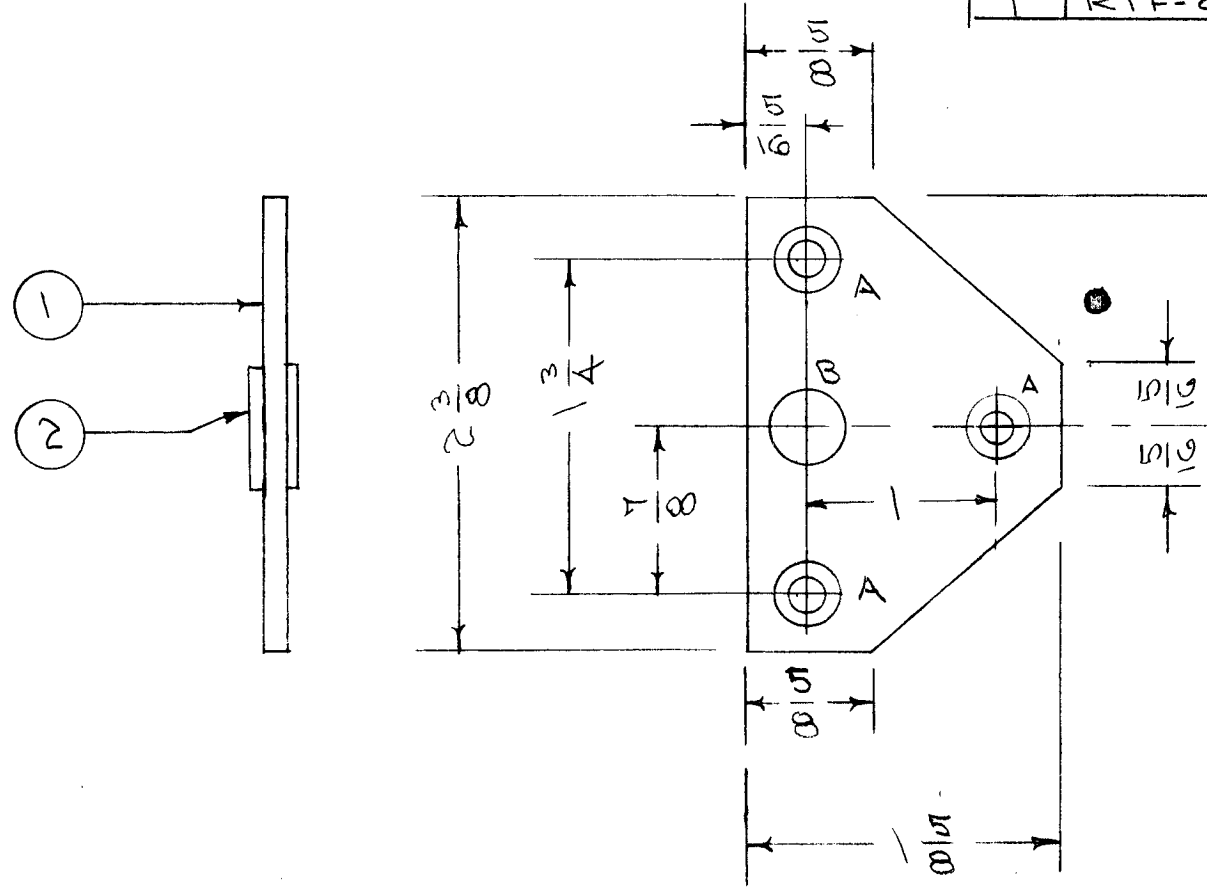
A-826 E

NOTICE TO PERSONS RECEIVING THIS DRAWING

THE TECHNICAL MATERIEL CORPORATION claims proprietary right in the material disclosed hereon. This drawing is issued in confidence for engineering information only and may not be reproduced or used to manufacture anything shown hereon without permission from THE TECHNICAL MATERIEL CORPORATION to the user. This drawing is loaned for mutual assistance and is subject to recall at any time.

Property of:

THE TECHNICAL MATERIEL CORPORATION
MAMARONECK, NEW YORK



HOLES:
A - DRILL & C'SINK 8-32 REQ 3
B - .3125 ± .001 1

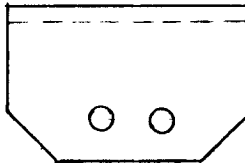
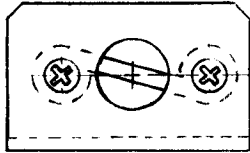
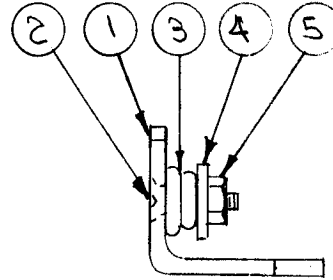
ISSUE	ITEM	CHANGED FROM	DATE	CH. NO.	DRAFTS	CHECKER	ENG. APP.	REQ.	ITEM	PART NO.	DESCRIPTION	SYMBOL	
E		USE 368 DRILL NOTES DEL.	6-17-66	16392				1	2	BB-117-G	NYLON, PANEL BEARING		
D	1	FINI S404 - IRIDITE WAS CAUSTIC DIP	12-4-59	1001				1	1	MS-543	PLATE (NO DWG.)		
C	1	ITEM 2 WAS BB-108	5/9/58	3						1/8 THK	THE TECHNICAL MATERIEL CORP. MAMARONECK, NEW YORK		
B	1	NOTE D, E, F: ADDED	5/10/57	2						STOCK SIZE	PLATE GEAR MOUNTING		
A	1	COMPLETE REVISION	4/17/56	1						ALUMINUM	SUB-ASSY	PMO	
TOLERANCES								MATERIAL					
SCALE:								2024-T3					
DEC. DIM. ± FRAC. DIM. ± ANGULAR DIM. ±								TYPE & TEMPER					
MAXIMUM ALLOWABLE TOLERANCES HAVE BEEN DETERMINED AND ANY DEVIATIONS WILL BE CAUSE F R REJECTION. REMOVE ALL BURRS AND SHARP EDGES								HEAT TREAT. SPEC.					
								S404 IRIDITE					
								FINISH & SPEC. NO.					
								DRAWN		CHECKED		FINAL APPROVAL	
								A-826		E			

IF IT IS FOUND DESIRABLE TO CHANGE ANY TOLERANCE OR OTHER DETAIL SPECIFIED ON THIS DRAWING NOTIFY THE PURCHASER PROMPTLY.

A-835 D

MAXIMUM ALLOWABLE TOLERANCES HAVE BEEN DETERMINED AND DEVIATIONS WILL BE CAUSE FOR REJECTION. REMOVE ALL BURRS AND SHARP EDGES

REQ. PER UNIT	USED ON			
	MODEL	PROJECT NO.	ASS'Y. NO.	DATE
1	RSA-2	170		9-23-54
1	RSD-2	170		10/29/54
1	RSM-2	170		"
1	RSE-2	170		11/23/54
1	FSS			9-1-55



2	5	NTH0348 BNG	NUT, HEX	
2	4	LWS03MRN	WASHER, LOCK	
1	3	FS-102-1	SPRING, "S" TYPE	
2	2	SCFP0348BN4	SCREWS, MACHINE	
1	1	MS-568	BRACKET	

REQ.	ITEM	PART NO.	DESCRIPTION	SYMBOL
------	------	----------	-------------	--------

THE TECHNICAL MATERIEL CORP.
MAMARONECK, NEW YORK

STOCK SIZE

BRACKET ASSY., COVER

MATERIAL WEIGHT PER PC.

TYPE & TEMPER

C.D.D. 9-23-54

KZ

DRAWN

ELEC. DES. APP.

MECH. DES. APP.

HEAT TREAT. SPEC.

CHECKED

FINAL APPROVAL

FINISH & SPEC. NO.

A-835 D

D	3	ASSY CLARIFIED	6-10-63	9212				
	2	ITEMS QUANTITY WAS						
	1	HDWR UPDATED & STANDARDIZED						
C	1	FIN. S404 IRIDITE WAS	12-4	1001				EMN
		S101 CAUSTIC DIP	59					
B	1	3/8 D. WAS 5/16 D.	5-27-57	2				
A	1	HOLE DIMENSIONS CHANGED	11/27/54	1				
ISSUE	ITEM	CHANGED FROM	DATE	CN. NO.	DRAFTS	CHECKER	ENG. APP.	

TOLERANCES

SCALE NONE

ALL OTHERS
DEC. DIM. ±
FRAC. DIM. ± 1/64
ANGULAR DIM. ±

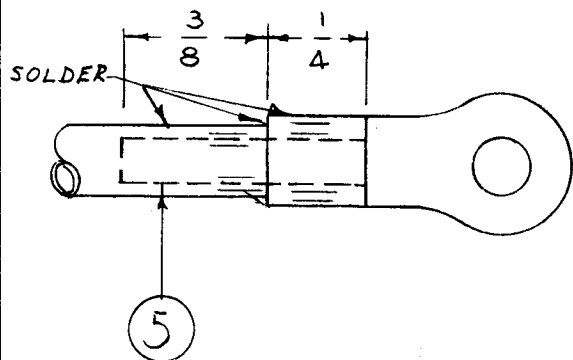
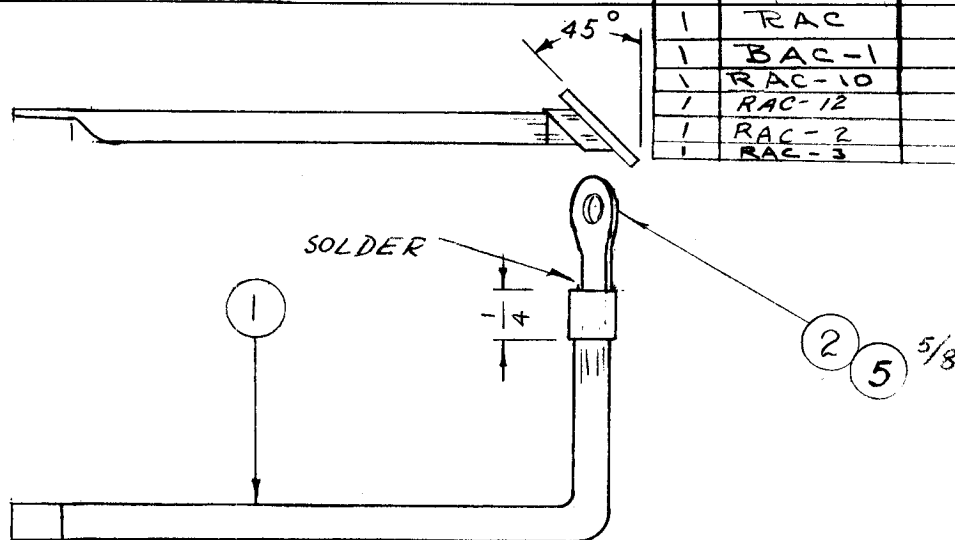
DRILL, PUNCH, COMMERCIAL STOCK
SIZES AND MANUFACTURERS
TOLERANCES ARE NOT INCLUDED.

IF IT IS FOUND DESIRABLE TO CHANGE ANY TOLERANCE OR OTHER DETAIL SPECIFIED ON THIS DRAWING NOTIFY THE PURCHASER PROMPTLY.

A-848 B

MAXIMUM ALLOWABLE TOLERANCES HAVE BEEN DETERMINED AND DEVIATIONS WILL BE CAUSE FOR REJECTION. REMOVE ALL BURRS AND SHARP EDGES

REQ PER UNIT	USED ON			
	MODEL	PROJECT NO.	ASS'Y. NO.	DATE
1	TRAC		A-101	10/11/54
1	BAC-1			10/25/54
1	RAC-10		A-745	11-26-54
1	RAC-12		A-990	4-4-55
1	RAC-2		A-574	12-21-55
1	RAC-3		A-1464	10-13-57



5/8"	5	WL-100-1	WIRE BUSS BAR	
X	4	BS-100	SOLDER, SOFT	
	3	DELETED		
1	2	TE-141-4	LUG, TERMINAL	
1	1	FP-131	CONNECTOR	
REQ.	ITEM	PART NO.	DESCRIPTION	SYMBOL
//			THE TECHNICAL MATERIEL CORP.	
STOCK SIZE			MAMARONECK, NEW YORK	
//			CONNECTOR INSULATOR RIGHT	
MATERIAL		WEIGHT PER PC.		
//				
TYPE & TEMPER			P.B. 10-11-54	APP
//			DRAWN	ELEC. DES. APP.
HEAT TREAT. SPEC.			MECH. DES. APP.	
SILVER PLATE - S245			APP	
CLEAR IRIDITE - S423			WOL	
FINISH & SPEC. NO.			CHECKED	
			FINAL APPROVAL	
			A-848 B	

B	1	FINISH WAS 3105	9-28-66	16895	NLA	APP	APP
A	1	TE-143 DELETED	5957	1	SC	APP	APP
ISSUE	ITEM	CHANGED FROM	DATE	CN. NO.	DRAFTS	CHECKER	ENG. APP.

TOLERANCES		SCALE
ALL OTHERS	DEC. DIM. ± FRAC. DIM. ± 1/64 ANGULAR DIM. ±	DRILL, PUNCH, COMMERCIAL STOCK SIZES AND MANUFACTURERS TOLERANCES ARE NOT INCLUDED.

IF IT IS FOUND DESIRABLE TO CHANGE ANY TOLERANCE OR OTHER DETAIL SPECIFIED ON THIS DRAWING NOTIFY THE PURCHASER PROMPTLY.

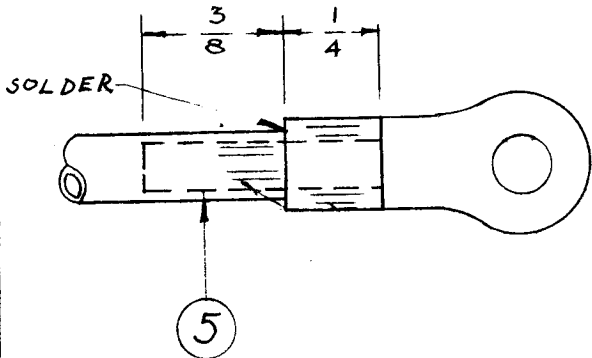
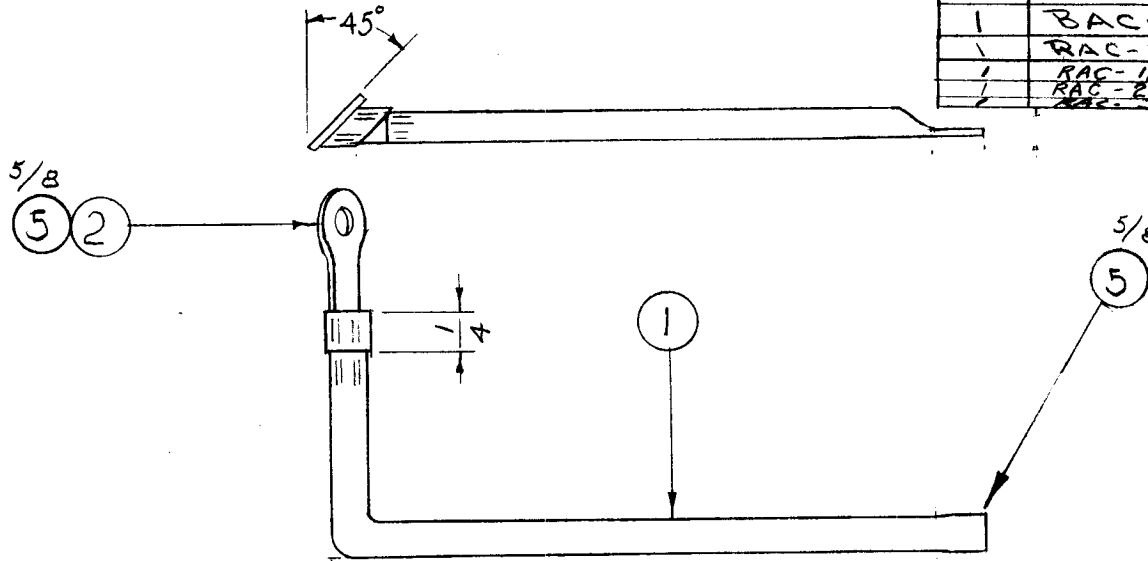
A-849 B

MAXIMUM ALLOWABLE TOLERANCES HAVE BEEN DETERMINED AND DEVIATIONS WILL BE CAUSE FOR REJECTION. REMOVE ALL BURRS AND SHARP EDGES

REQ. PER UNIT

USED ON

REQ. PER UNIT	MODEL	PROJECT NO.	ASS'Y. NO.	DATE
1	RAC		A-101	10/11/54
1	BAC-1			10/25/54
1	RAC-10		A-7AS	11-26-54
1	RAC-12		A-990	4-7-55
1	RAC-2		A-570	12-21-55
1	RAC-3		A-1967	10-24-57



5/8	5	WL-100-1	WIRE BUSS BAR	
X	4	BS-100	SOLDER, SOFT	
		DELETED		
1	2	TE-141-4	LUG, TERMINAL	
1	1	FP-131	CONNECTOR	
REQ.	ITEM	PART NO.	DESCRIPTION	SYMBOL
— H —			THE TECHNICAL MATERIEL CORP.	
STOCK SIZE			MAMARONECK. NEW YORK	
— H —			CONNECTOR INSULATOR LEFT	
MATERIAL			WEIGHT PER PC.	
— H —				
TYPE & TEMPER			P.D-10-11-54	ORP
— H —			DRAWN	ELEC. DES. APP. MECH. DES. APP.
HEAT TREAT. SPEC.			JAD	ORP
SILVER PLATE - S245			CHECKED	
CLEAR IRIDITE - S423			FINAL APPROVAL	
FINISH & SPEC. NO.			A-849 B	

B	1	FINISH WAS S105	9/28/66	16895	HG	ORP	MM
A	1	TE-143 DELETED	5/10/57	1	SC.	JAD	ORP
ISSUE	ITEM	CHANGED FROM	DATE	CN. NO.	DRAFTS	CHECKER	ENG. APP.

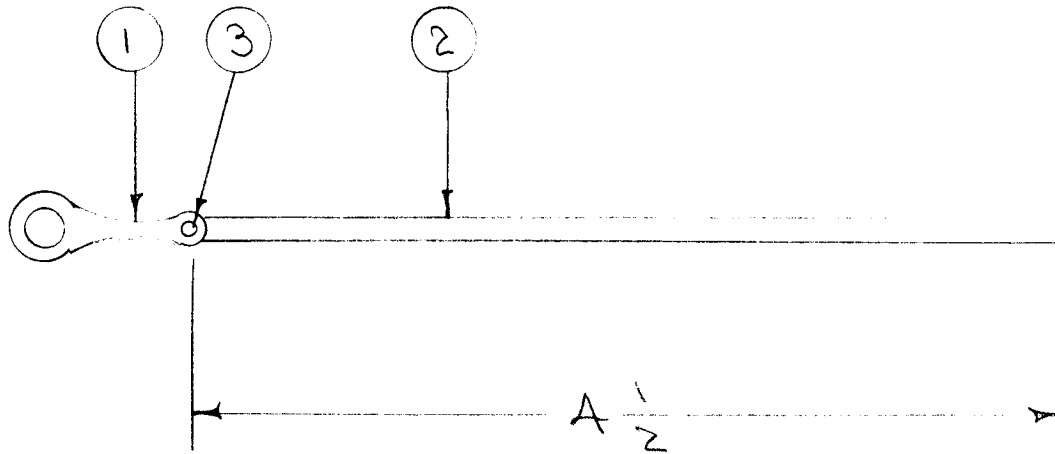
TOLERANCES		SCALE
ALL OTHERS	DEC. DIM. ± FRAC. DIM. ± 1/64 AN ULAR DIM. ±	DRILL, PUNCH, COMMERCIAL STOCK SIZES AND MANUFACTURERS TOLERANCES ARE NOT INCLUDED.

IF IT IS FOUND DESIRABLE TO CHANGE ANY TOLERANCE OR OTHER DETAIL SPECIFIED ON THIS DRAWING NOTIFY THE PURCHASER PROMPTLY.

A-852 A

MAXIMUM ALLOWABLE TOLERANCES HAVE BEEN DETERMINED AND DEVIATIONS WILL BE CAUSE FOR REJECTION. REMOVE ALL BURRS AND SHARP EDGES

REQ PER UNIT	USED ON			
	MODEL	PROJECT NO.	ASS'Y. NO.	DATE
2	PMo-1	285		10-14-54
2	PMo-2	285		10-14-54



X	3	BS-100	SOLDER, SOFT	
4 3/4"	2	WL-103-1	SHIELD, FLEX.	
1	1	TE-104-6	TERMINAL, LOCKING	
REQ.	ITEM	PART NO.	DESCRIPTION	SYMBOL
			THE TECHNICAL MATERIEL CORP.	
			MAMARONECK. NEW YORK	
			GROUND STRAP ASSY.	
			P. M. O.	
			ADD. 10/14/54	
			M.H.C.	
			A. J. J.	
			FINAL APPROVAL	
			A-852 A	

A	1	ITEM 2 WAS WL-106-1	10/29/54	1	FAIR	RC	WC
ISSUE	ITEM	CHANGED FROM	DATE	CN. NO.	DRAFTS	CHECKER	ENG. APP.

TOLERANCES		SCALE
ALL OTHERS	DEC. DIM. ± FRAC. DIM. ± 1/8 ANGULAR DIM. ±	DRILL, PUNCH, COMMERCIAL STOCK SIZES AND MANUFACTURERS TOLERANCES ARE NOT INCLUDED.

IF IT IS FOUND DESIRABLE TO CHANGE ANY TOLERANCE OR OTHER DETAIL SPECIFIED ON THIS DRAWING NOTIFY THE PURCHASER PROMPTLY.

A-867 A

MAXIMUM ALLOWABLE TOLERANCES HAVE BEEN DETERMINED AND DEVIATIONS WILL BE CAUSE FOR REJECTION. REMOVE ALL BURRS AND SHARP EDGES

REQ. PER UNIT

USED ON

MODEL

PROJECT NO.

ASS'Y. NO.

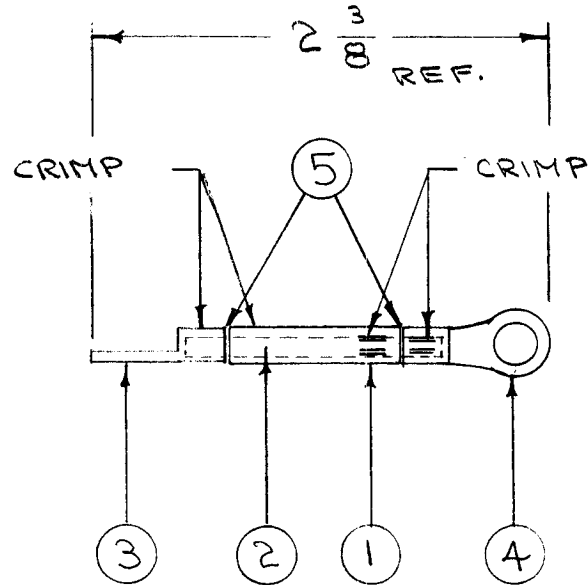
DATE

3

BAC-2

A-192

10-22-54



X	5	BS-100	SOLDER, SOFT	
1	4	TE-141-3	TERMINAL	
1	3	TE-143	TERMINAL	
15/16"	2	WL-100-1	WIRE, BUSS BAR 10 GA.	
1	1	FP-133	JUMPER	

REQ.	ITEM	PART NO.	DESCRIPTION	SYMBOL
— # —			THE TECHNICAL MATERIEL CORP. MAMARONECK. NEW YORK	
STOCK SIZE				
— # —		— # —	JUMPER NO. 1 ASSY.	
MATERIAL		WEIGHT PER PC.	BAC-2	
— # —		C.D.D. 10-22-54		
TYPE & TEMPER		DRAWN <i>UPB</i>		
— # —		ELEC. DES. APP. <i>UPB</i>		
HEAT TREAT. SPEC.		MECH. DES. APP. <i>WDE</i>		
SILVER PLATE - S245		CHECKED <i>HADe</i>		
CLEAR IRIDITE - S423		FINAL APPROVAL <i>UPB</i>		
FINISH & SPEC. NO.		A-867		

A	1	FINISH WAS S105	9-28-66	16895	HCLA	<i>UPB</i>	<i>WDE</i>
ISSUE	ITEM	CHANGED FROM	DATE	CN. NO.	DRAFTS	CHECKER	ENG. APP.

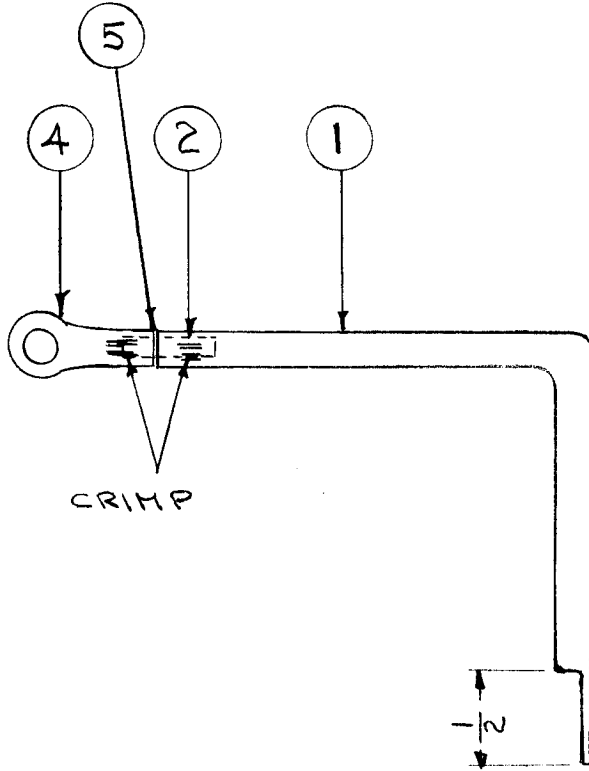
TOLERANCES		SCALE
ALL OTHERS	DEC. DIM. ± FRAC. DIM. ± ANGULAR DIM. ±	DRILL, PUNCH, COMMERCIAL STOCK SIZES AND MANUFACTURERS TOLERANCES ARE NOT INCLUDED.

IF IT IS FOUND DESIRABLE TO CHANGE ANY TOLERANCE OR OTHER DETAIL SPECIFIED ON THIS DRAWING NOTIFY THE PURCHASER PROMPTLY.

A-869 C

MAXIMUM ALLOWABLE TOLERANCES HAVE BEEN DETERMINED AND DEVIATIONS WILL BE CAUSE FOR REJECTION. REMOVE ALL BURRS AND SHARP EDGES

REQ. PER UNIT	USED ON			
	MODEL	PROJECT NO.	ASS'Y. NO.	DATE
1	BAC-2		A-868	10-22-54



X	5	BS-100	SOLDER, SOFT
1	4	TE-141-3	TERMINAL
1	3	---	DELETED
1/2"	2	WL-100-1	WIRE, BUSS BAR 10 GA.
1	1	FP-137	JUMPER NO. 2

REQ.	ITEM	PART NO.	DESCRIPTION	SYMBOL
— H —			THE TECHNICAL MATERIEL CORP. MAMARONECK, NEW YORK	
STOCK SIZE				
— H —			JUMPER NO. 2. ASSY. BAC-2	
MATERIAL WEIGHT PER PC.				
— H —			CDD. 10-22-54	
TYPE & TEMPER			DRAWN	ELEC. DES. APP.
— H —			MECH. DES. APP.	
HEAT TREAT. SPEC.			CHECKED	
SILVER PLATE - S245 CLEAR IRIDITE - S423			FINAL APPROVAL	
FINISH & SPEC. NO.			A-869 C	

C	1	FINISH WAS S105	9/28/66	16895	HCA	<i>[Signature]</i>	
B	1	ITEM(3) TE-143, 1 REQ DELETED	10-9-62	7400	SS	<i>[Signature]</i>	
A	1	FP-137 WAS FP-134	1/11/55	1	FAV	<i>[Signature]</i>	
ISSUE	ITEM	CHANGED FROM	DATE	CN. NO.	DRAFTS	CHECKER	ENG. APP.

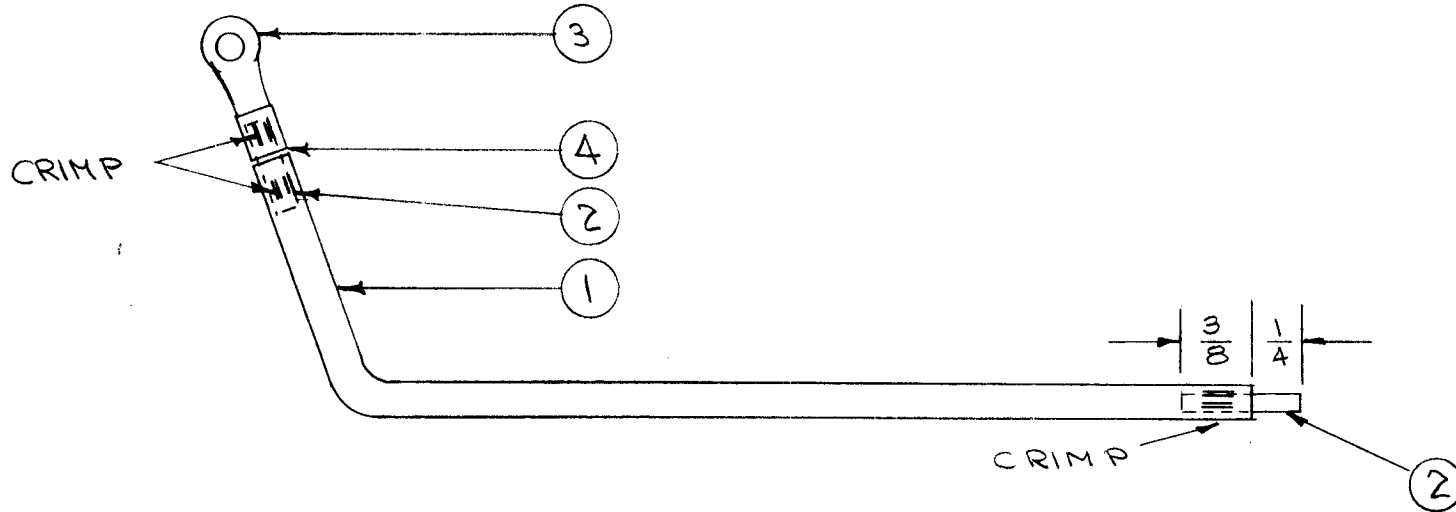
TOLERANCES		SCALE
ALL OTHERS	DEC. DIM. ± FRAC. DIM. ± ANGULAR DIM. ±	DRILL, PUNCH, COMMERCIAL STOCK SIZES AND MANUFACTURERS TOLERANCES ARE NOT INCLUDED.

IF IT IS FOUND DESIRABLE TO CHANGE ANY TOLERANCE OR OTHER DETAIL SPECIFIED ON THIS DRAWING NOTIFY THE PURCHASER PROMPTLY.

A-870 B

MAXIMUM ALLOWABLE TOLERANCES HAVE BEEN DETERMINED AND DEVIATIONS WILL BE CAUSE FOR REJECTION. REMOVE ALL BURRS AND SHARP EDGES

REQ. PER UNIT	USED ON			
	MODEL	PROJECT NO.	ASS'Y. NO.	DATE
1	BAC-2		A-192	2-22-54



X	4	BS-100	SOLDER, SOFT	
1	3	TE-141-3	TERMINAL	
1/8"	2	WL-100-1	WIRE, BUSS BAR 10 GA.	
1	1	FP-135	JUMPER NO. 3	
REQ.	ITEM	PART NO.	DESCRIPTION	SYMBOL
— # —			THE TECHNICAL MATERIEL CORP.	
STOCK SIZE			MAMARONECK. NEW YORK	
— # —			JUMPER NO. 3 ASSY	
MATERIAL			BAC-2	
WEIGHT PER PC.			C.D.D. 10-22-54	
TYPE & TEMPER			APB	WJ
— # —			DRAWN	ELEC. DES. APP. MECH. DES. APP.
HEAT TREAT. SPEC.			APB	
SILVER PLATE - S245			CHECKED	
CLEAR IRIDITE - S483			FINAL APPROVAL	
FINISH & SPEC. NO.			A-870 B	

B	1	FINISH WAS S105	928-66	16895	HLA	APB	
A	2	5/8" ITEM 2 ADDED	1/17/54	1	M.H.S.	WJ	
ISSUE	ITEM	CHANGED FROM	DATE	CN. NO.	DRAFTS	CHECKER	ENG. APP.

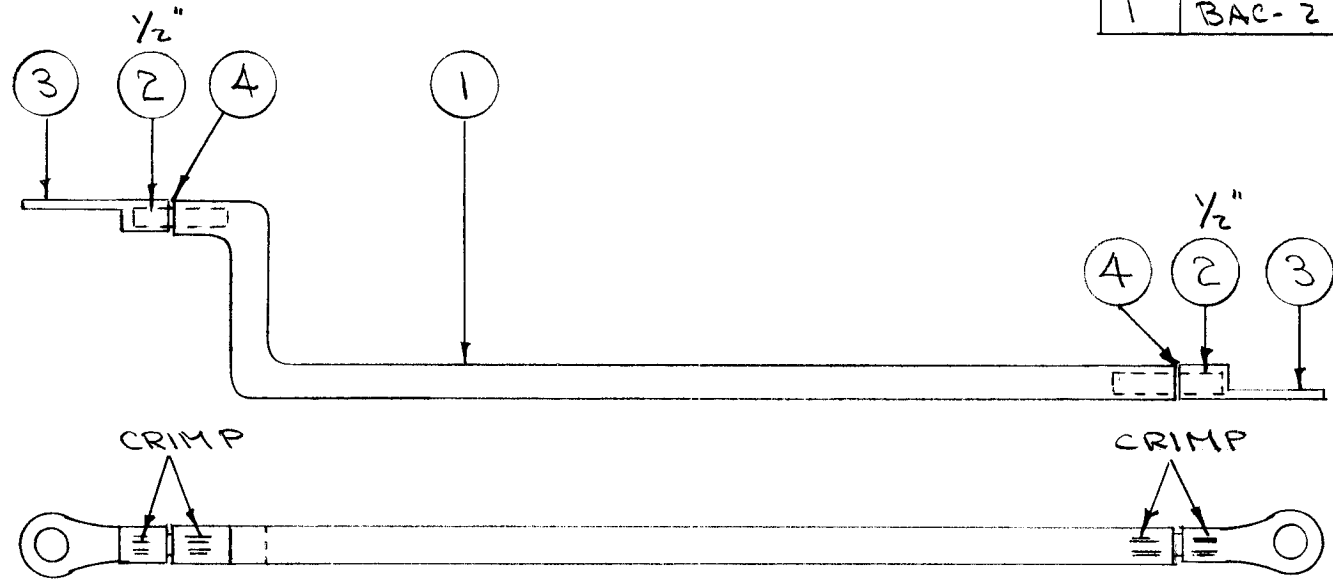
TOLERANCES		SCALE
ALL OTHERS	DEC. DIM. ± FRAC. DIM. ± ANGULAR DIM. ±	DRILL, PUNCH, COMMERCIAL STOCK SIZES AND MANUFACTURERS TOLERANCES ARE NOT INCLUDED.

IF IT IS FOUND DESIRABLE TO CHANGE ANY TOLERANCE OR OTHER DETAIL SPECIFIED ON THIS DRAWING NOTIFY THE PURCHASER PROMPTLY.

A-871 A

MAXIMUM ALLOWABLE TOLERANCES HAVE BEEN DETERMINED AND DEVIATIONS WILL BE CAUSE FOR REJECTION. REMOVE ALL BURRS AND SHARP EDGES

REQ. PER UNIT	USED ON			
	MODEL	PROJECT NO.	ASS'Y. NO.	DATE
1	BAC-2		A-868	10-25-54



NOTE POSITION OF TERMINALS

X	4	BS-100	SOLDER, SOFT	
2	3	TE-141-3	TERMINAL	
1"	2	WL-100-1	WIRE, BUSS BAR 10 GA.	
1	1	FP-136	JUMPER NO. 4.	
REQ.	ITEM	PART NO.	DESCRIPTION	SYMBOL
— # —			THE TECHNICAL MATERIEL CORP. MAMARONECK. NEW YORK	
STOCK SIZE				
— # —		— # —	JUMPER NO. 4 ASSY	
MATERIAL		WEIGHT PER PC.	BAC-2	
— # —		CDD 10-25-54		
TYPE & TEMPER		DRAWN		MECH. DES. APP.
— # —		ELEC. DES. APP.		
HEAT TREAT. SPEC.		FINAL APPROVAL		
SILVER PLATE - S245		A-871 A		
CLEAR IRIDITE - S423				
FINISH & SPEC. NO.				

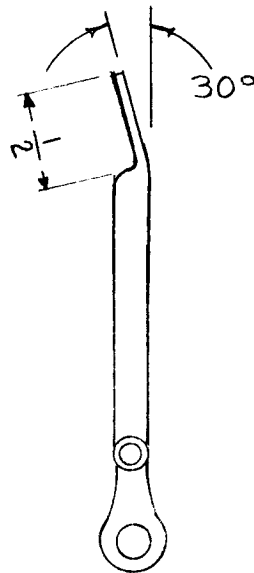
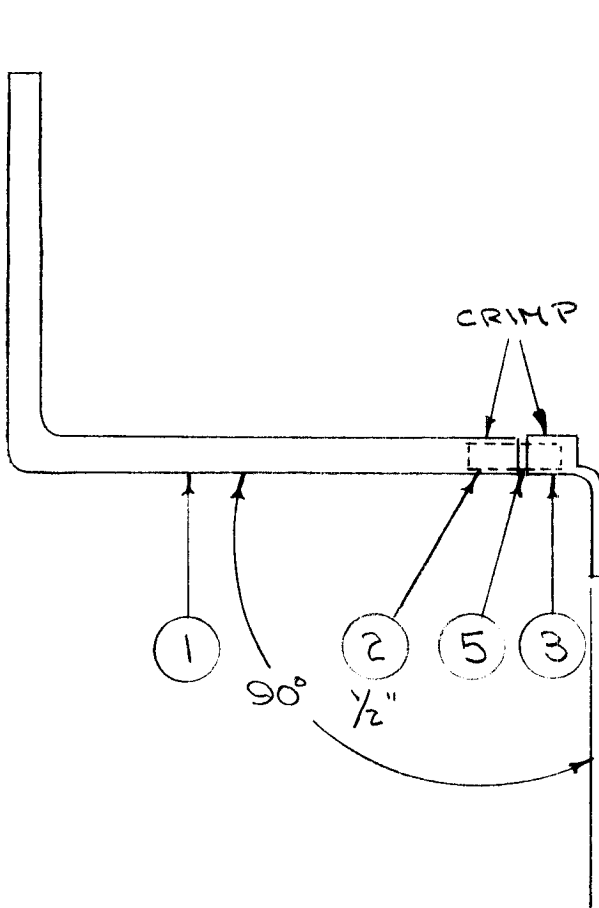
A	1	FINISH WAS S105	9-28-66	16895	NCA	QC/B	
ISSUE	ITEM	CHANGED FROM	DATE	CN. NO.	DRAFTS	CHECKER	ENG. APP.
TOLERANCES			SCALE				
ALL OTHERS	DEC. DIM. ± FRAC. DIM. ± ANGULAR DIM. ±		DRILL, PUNCH, COMMERCIAL STOCK SIZES AND MANUFACTURERS TOLERANCES ARE NOT INCLUDED.				

IF IT IS FOUND DESIRABLE TO CHANGE ANY TOLERANCE OR OTHER DETAIL SPECIFIED ON THIS DRAWING NOTIFY THE PURCHASER PROMPTLY.

A-872 C

MAXIMUM ALLOWABLE TOLERANCES HAVE BEEN DETERMINED AND DEVIATIONS WILL BE CAUSE FOR REJECTION. REMOVE ALL BURRS AND SHARP EDGES

REQ PER UNIT	USED ON			
	MODEL	PROJECT NO.	ASS'Y. NO.	DATE
1	BAC-2			10-25-54



NOTE POSITION & BEND OF LUGS

REQ.	ITEM	PART NO.	DESCRIPTION	SYMBOL
X	5	BS-100	SOLDER, SOFT	
X	4	---	DELETED	
1	3	TE-141-3	TERMINAL	
1/2"	2	WL-100-1	WIRE, BUSSBAR 10 GA.	
1	1	FP-137	JUMPER NO. 5	

THE TECHNICAL MATERIEL CORP. MAMARONECK, NEW YORK	
JUMPER NO. 5 ASSY. BAC-2	
C.D.D. 10-25-54	AMB
DRAWN	ELEC. DES. APP. MECH. DES. APP.
FAID	AMB
CHECKED	FINAL APPROVAL
A-872 C	

C	1	FINISH WAS S105	9/28/66	16895	W.A.	W.A.	W.A.
B	3	ITEM(2) WAS 1" REQ.	10-26-62	7562	CH	W.A.	W.A.
B	2	ITEM(4) TE-143, 1 REQ DELETED					
A	1	FLAT TUBING ADDED					
A	4	WAS 15°	11/17/54	1	M.H.S.	W.A.	W.A.
ISSUE	ITEM	CHANGED FROM	DATE	CN. NO.	DRAFTS	CHECKER	ENG. APP.

TOLERANCES		SCALE
ALL OTHERS	DEC. DIM. ± FRAC. DIM. ± ANGULAR DIM. ±	DRILL, PUNCH, COMMERCIAL STOCK SIZES AND MANUFACTURERS TOLERANCES ARE NOT INCLUDED.

IF IT IS FOUND DESIRABLE TO CHANGE ANY TOLERANCE OR OTHER DETAIL SPECIFIED ON THIS DRAWING NOTIFY THE PURCHASER PROMPTLY.

A-873

C

MAXIMUM ALLOWABLE TOLERANCES HAVE BEEN DETERMINED AND DEVIATIONS WILL BE CAUSE FOR REJECTION. REMOVE ALL BURRS AND SHARP EDGES

REQ. PER UNIT

USED ON

MODEL

PROJECT NO.

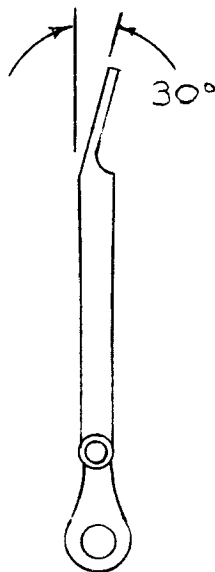
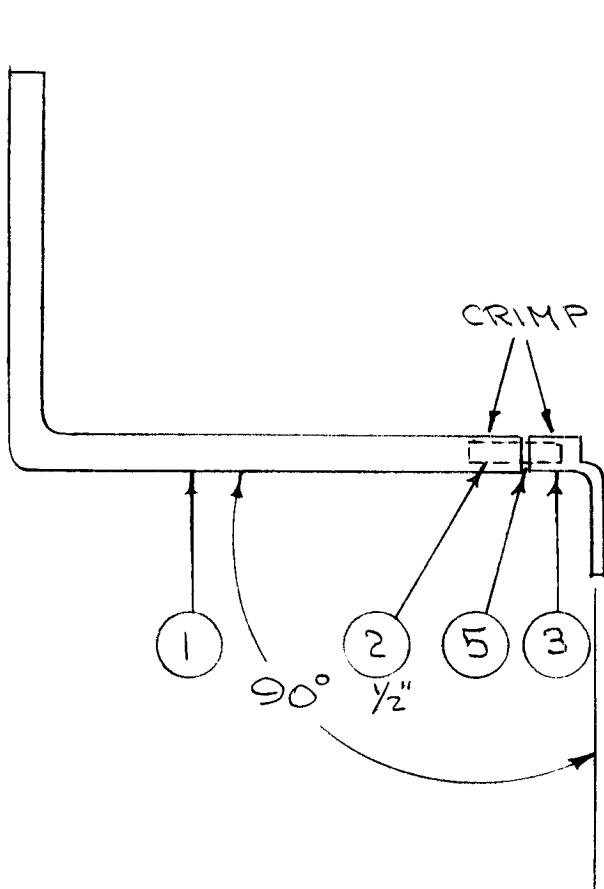
ASS'Y. NO.

DATE

1

BAC-2

10-25-54



NOTE POSITION & BEND OF LUG

X	5	BS-100	SOLDER, SOFT	
#	4	---	DELETED	
1	3	TE-141-3	TERMINAL	
1/2"	2	WL-100-1	WIRE, BUSS BAR #10	
1	1	FP-137	JUMPER NO. 6	
REQ.	ITEM	PART NO.	DESCRIPTION	SYMBOL
---			THE TECHNICAL MATERIEL CORP.	
---			MAMARONECK, NEW YORK	
---			JUMPER NO. 6 ASSY	
---			BAC-2	
---			C.D.D. 10-25-54	
---			AMB	

---			DRAWN	MECH. DES. APP.

---			CHECKED	FINAL APPROVAL

---			A-873	C

C	1	FINISH WAS S105	9/28/66	16895	4/6	JCB	
B	2	ITEM(4) TE-143, 1-REQ DELETED	10-10-67	7399			
	1	TUBE ADDED AT FLATTENED END					
A	4	WAS 15°	11/17/54	1	M.H.S.		
ISSUE	ITEM	CHANGED FROM	DATE	CN. NO.	DRAFTS	CHECKER	ENG. APP.

TOLERANCES

SCALE

ALL OTHERS
DEC. DIM. ±
FRAC. DIM. ±
ANGULAR DIM. ±

DRILL, PUNCH, COMMERCIAL STOCK SIZES AND MANUFACTURERS TOLERANCES ARE NOT INCLUDED.

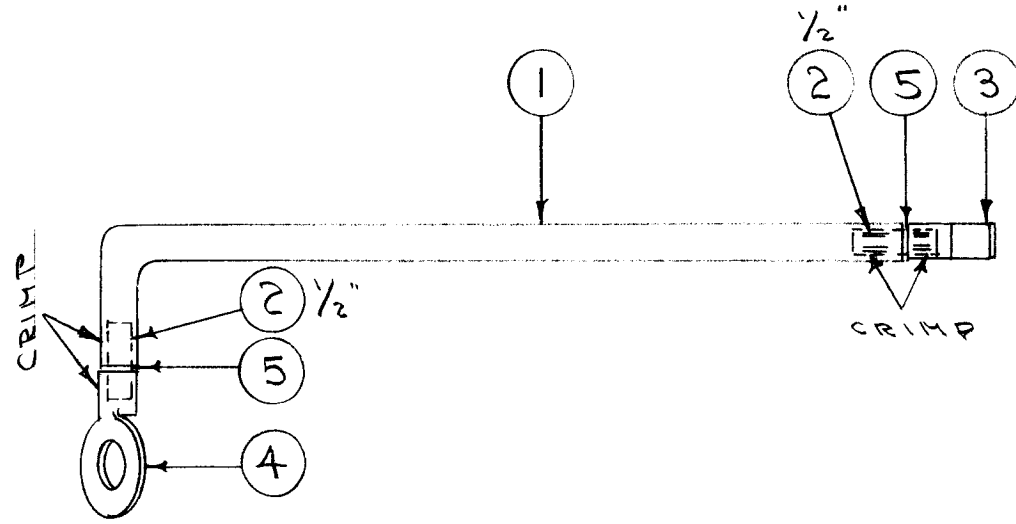
HEAT TREAT. SPEC.
SILVER PLATE - S245
CLEAR IRIDIUM - S423
FINISH & SPEC. NO.

IF IT IS FOUND DESIRABLE TO CHANGE ANY TOLERANCE OR OTHER DETAIL SPECIFIED ON THIS DRAWING NOTIFY THE PURCHASER PROMPTLY.

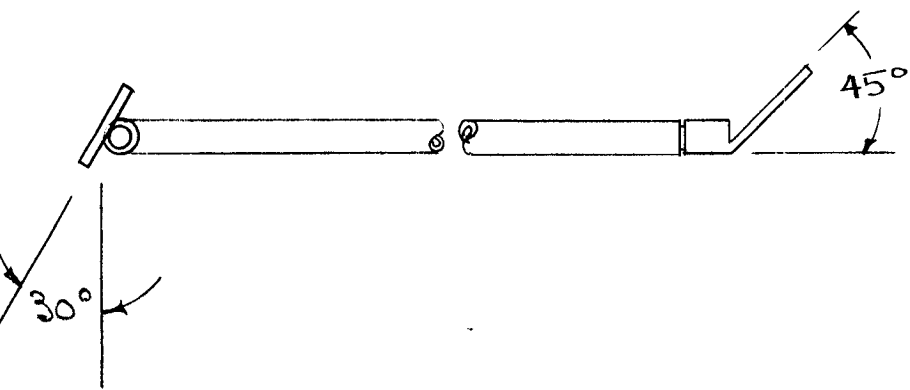
A-874 A

MAXIMUM ALLOWABLE TOLERANCES HAVE BEEN DETERMINED AND DEVIATIONS WILL BE CAUSE FOR REJECTION. REMOVE ALL BURRS AND SHARP EDGES

REQ. PER UNIT	USED ON			
	MODEL	PROJECT NO.	ASS'Y. NO.	DATE
1	BAC-2			10-25-54



NOTE POSITION AND BEND OF LUGS.



X	5	BS-100	SOLDER, SOFT	
1	4	TE-141-4	TERMINAL	
1	3	TE-143	TERMINAL	
1	2	WL-100-1	WIRE, BUSS BAR 10 GA.	
1	1	FP-138	JUMPER NO. 7	
REQ.	ITEM	PART NO.	DESCRIPTION	SYMBOL
— —			THE TECHNICAL MATERIEL CORP.	
STOCK SIZE			MAMARONECK. NEW YORK	
— —			JUMPER NO. 7 ASSY.	
MATERIAL			BAC-2	
— —			C.D.D. 10-25-54	
TYPE & TEMPER			AMB	
— —			DRAWN	
HEAT TREAT. SPEC.			ELEC. DES. APP.	
SILVER RATE - S245			MECH. DES. APP.	
CLEAR BUDITE - S423			AMB	
FINISH & SPEC. NO.			CHECKED	
			FINAL APPROVAL	
			A-874 A	

A	1	FINISH WAS S105	9286	16895	HCA	AMB	AMB
ISSUE	ITEM	CHANGED FROM	DATE	CN. NO.	DRAFTS CHECKER	ENG. APP.	

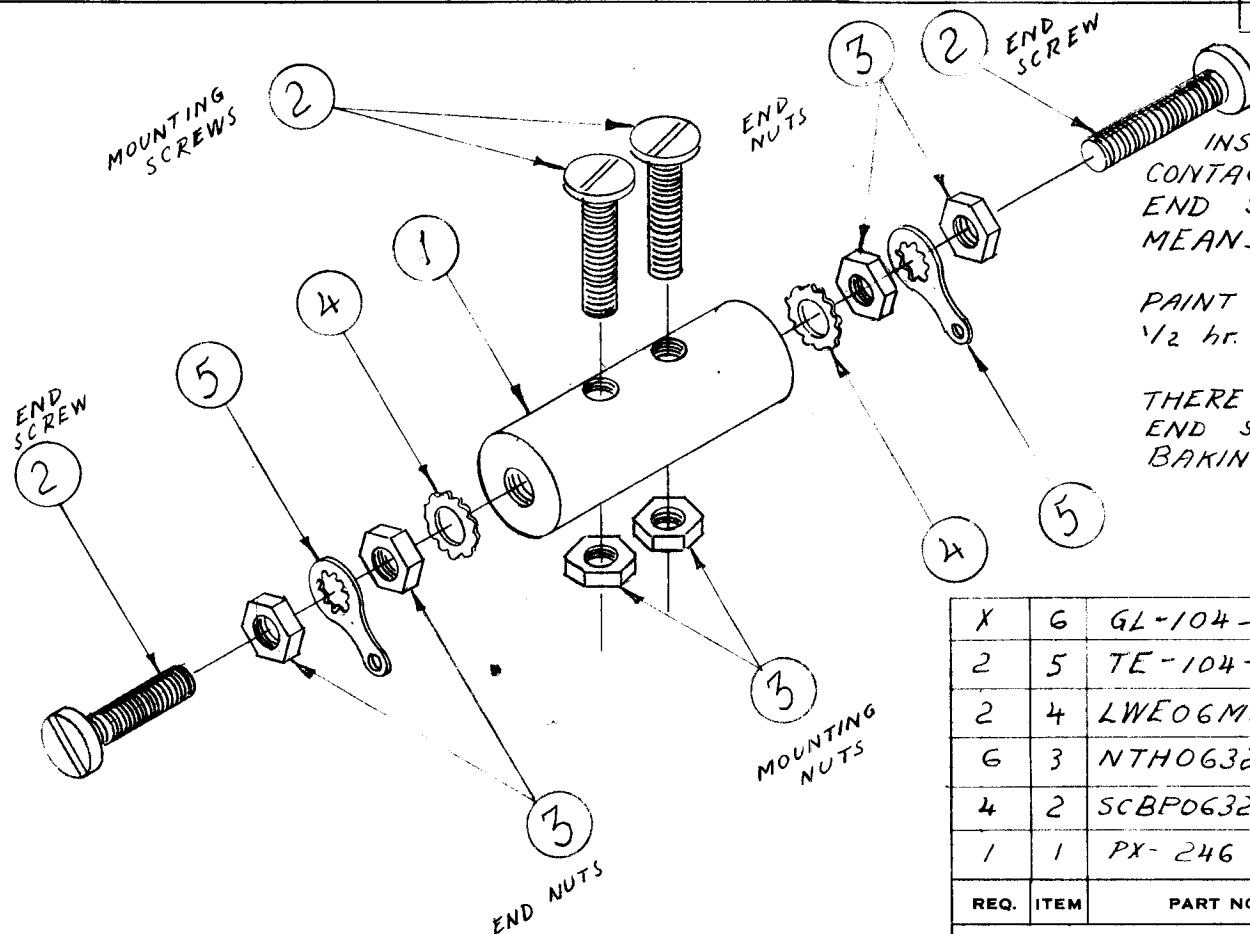
TOLERANCES		SCALE
ALL OTHERS	DEC. DIM. ± FRAC. DIM. ± ANGULAR DIM. ±	DRILL, PUNCH, COMMERCIAL STOCK SIZES AND MANUFACTURERS TOLERANCES ARE NOT INCLUDED.

IF IT IS FOUND DESIRABLE TO CHANGE ANY TOLERANCE OR OTHER DETAIL SPECIFIED ON THIS DRAWING NOTIFY THE PURCHASER PROMPTLY.

A-883 A

MAXIMUM ALLOWABLE TOLERANCES HAVE BEEN DETERMINED AND DEVIATIONS WILL BE CAUSE FOR REJECTION.
REMOVE ALL BURRS AND SHARP EDGES

REQ PER UNIT	USED ON			
	MODEL	PROJECT NO.	ASS'Y. NO.	DATE
1	DAC-		A-505	11/1/54



SETTING SPARK GAP:
INSERT END SCREWS UNTIL THEY ARE IN CONTACT WITH MOUNTING SCREWS, THEN RETRACT END SCREWS 1 REVOLUTION AND LOCK BY MEANS OF TWO END NUTS.

FINISH:
PAINT WITH ITEM 6 AND BAKE AT 70°C FOR 1/2 hr.

TEST:
THERE SHOULD BE NO DC CONNECTION BETWEEN END SCREWS AND MOUNTING SCREWS AFTER BAKING

REQ.	ITEM	PART NO.	DESCRIPTION	SYMBOL
X	6	GL-104-2	INSULEX 85 U	
	2	TE-104-2	TERMINAL LOCKING	
	2	LWE06MRN	LOCKWASHER, EXT.	
	6	NTH0632BN10	NUT, HEXAGON	
	4	SCBP0632BN14	SCREW, MACHINE	
	1	PX-246	HOLDER, SPARK ROD	

THE TECHNICAL MATERIEL CORP.
MAMARONECK, NEW YORK

SPARK ROD HOLDER ASSY.

MODEL DAC-3

A	#	ON B/M IT2WAS SCB50632B 12/15/54	15A09	F.V.	9016	MM
ISSUE	ITEM	CHANGED FROM	DATE	CN. NO.	DRAFTS CHECKER	ENG. APP.

TOLERANCES		SCALE
ALL OTHERS	DEC. DIM. ± FRAC. DIM. ± ANGULAR DIM. ±	DRILL, PUNCH, COMMERCIAL STOCK SIZES AND MANUFACTURERS TOLERANCES ARE NOT INCLUDED.

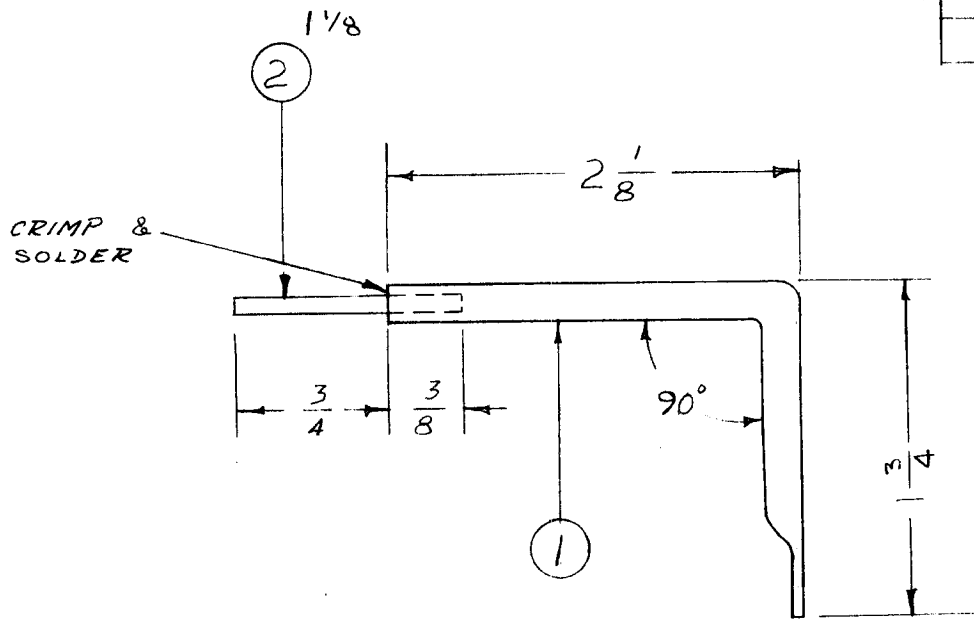
STOCK SIZE			TYPE & TEMPER		
MATERIAL			WEIGHT PER PC.		
HEAT TREAT. SPEC.			FINISH & SPEC. NO.		
DRAWN		ELEC. DES. APP.		MECH. DES. APP.	
CHECKED		FINAL APPROVAL			
		A-883		A	

IF IT IS FOUND DESIRABLE TO CHANGE ANY TOLERANCE OR OTHER DETAIL SPECIFIED ON THIS DRAWING NOTIFY THE PURCHASER PROMPTLY.

A-890 D

MAXIMUM ALLOWABLE TOLERANCES HAVE BEEN DETERMINED AND DEVIATIONS WILL BE CAUSE FOR REJECTION. REMOVE ALL BURRS AND SHARP EDGES

REQ. PER UNIT	USED ON			
	MODEL	PROJECT NO.	ASS'Y. NO.	DATE
1	VRA-1			12-3-54
1	VRA-2			12-3-54



SUPERSEDED
REPLACED BY
CA852

X	4	BS-100	SOLDER, SOFT	
-	3		DELETED	
1/8	2	WL-100-1	WIRE, BUSS BAR	
1	1	FP-143	CONNECTOR, ANTENNA (NO DRAWING)	
REQ. ITEM	PART NO.		DESCRIPTION	SYMBOL
3/16 TUBING			THE TECHNICAL MATERIEL CORP.	
STOCK SIZE			MAMARONECK. NEW YORK	
COPPER			CONNECTOR ANTENNA	
MATERIAL			ASSY.	
WEIGHT PER PC.				
SOFT DRAWN			PB 12-3-54	
TYPE & TEMPER			M.H.S.	
HEAT TREAT. SPEC.			DRAWN	
SILVER PLATE - S245			ELEC. DES. APP.	
CLEAR IRIDITE - S423			MECH. DES. APP.	
FINISH & SPEC. NO.			CHECKED	
			FINAL APPROVAL	

ISSUE	ITEM	CHANGED FROM	DATE	CN. NO.	DRAFTS	CHECKER	ENG. APP.
D		SUPERSEDED NT. ADD.	5/10/72	20685	GE	g	Q
C	1	FINISH WAS S105	9/20/66	16895	WBA	SCS	M
	3	ITEM 2 QUAN. WAS 1 3/4"					
B	2	1 3/4 WAS 1"	4/25/57	2	16	JHB	AK
	1	ITEM 3 (TE-143) DELETED					
A	1	TITLE WAS GROUND	1/4/55	1	FADE	ESD	

TOLERANCES		SCALE
ALL OTHERS	DEC. DIM. ± FRAC. DIM. ± AN ULAR DIM. ±	DRILL, PUNCH, COMMERCIAL STOCK SIZES AND MANUFACTURERS TOLERANCES ARE NOT INCLUDED.