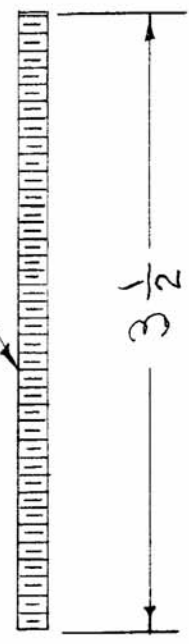


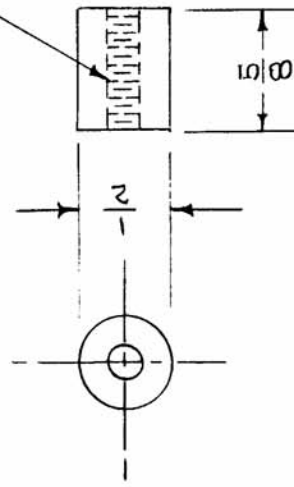
IF IT IS FOUND DESIRABLE TO CHANGE ANY TOLERANCE OR OTHER DETAIL SPECIFIED ON THIS DRAWING NOTIFY THE PURCHASER PROMPTLY.

MAXIMUM ALLOWABLE TOLERANCES HAVE BEEN DETERMINED AND DEVIATIONS WILL BE CAUSE FOR REJECTION. REMOVE ALL BURRS AND SHARP EDGES

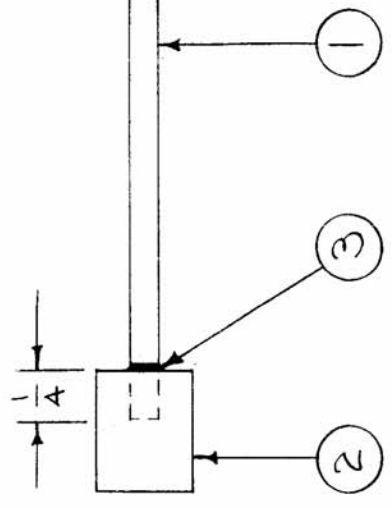
PM-294-1  
10-32 BRASS ROD.



PM-294-2  
-DRILL & TAP 10-32



BRASS



A-789 C

REQ. UNIT	2	MODEL	CTAC	PROJECT NO.	311	ASSY. NO.	A-799	DATE	6-16-54
-----------	---	-------	------	-------------	-----	-----------	-------	------	---------

REQ. ITEM	PART NO.	DESCRIPTION	SYMBOL
5	FW10-MRC	WASHER, FLAT	DELETED
4	NTH1032-BR12	NUT, HEXAGON	DELETED
X 3	BS-104	EUTECTIC TIN WELD	
1 2	PM-294-2	COLLAR (NO DWG)	
1 1	PM-294-1	ROD (NO DWG)	

THE TECHNICAL MATERIEL CORP. MAMARONECK, NEW YORK	
COUPLING EXTENSION	
ASSY. (TAC PLASTIC CASE)	
C.D. 6-15-54	WJC
DRAWN	ELEC. DES. APP.
CHECKED	MECH. DES. APP.
FINAL APPROVAL	
A-789 C	

ISSUE ITEM	CHANGED FROM	DATE	CN. NO.	DRAFTS	CHECKER	ENG. APP.
C 1	ITEMS 4, 5 Deleted	10/24/54	3	JAB	WJC	
B 1	ITEM 3 Added	7/29/54	2	JAB	WJC	
A 1	3 1/2 WAS 3/4, DELETE # 3	7/11/54	1	C.D.	JAB	WJC

DEC. DIM. ±  
FRAC. DIM. ± 1/64  
OTHERS ANGULAR DIM. ±

TOLERANCES

SCALE

DRILL, PUNCH, COMMERCIAL STOCK SIZES AND MANUFACTURERS TOLERANCES ARE NOT INCLUDED.