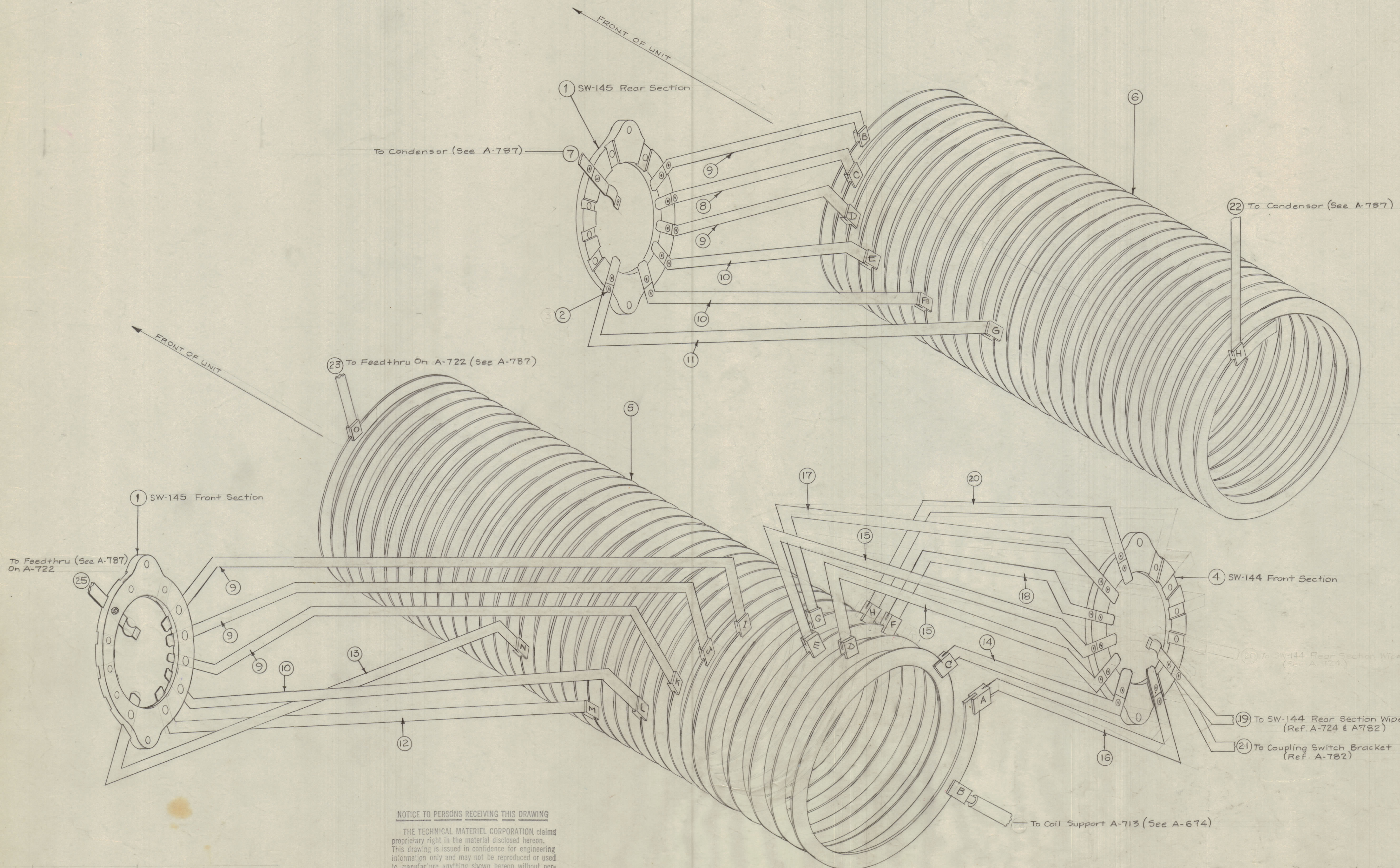


IF IT IS FOUND DESIRABLE TO CHANGE ANY TOLERANCE OR OTHER DETAIL SPECIFIED ON THIS DRAWING NOTIFY THE PURCHASER PROMPTLY.
 MAXIMUM ALLOWABLE TOLERANCES HAVE BEEN DETERMINED AND DEVIATIONS WILL BE CAUSE FOR REJECTION. REMOVE ALL BURRS AND SHARP EDGES



NOTE: RIVET ALL SWITCH CONNECTIONS AS SHOWN. SOLDER ALL CONNECTIONS ON ASS'Y. A-782

1	25	A-786-2	STRAP, CONNECTING ASS'Y.	
	24		DELETED	
1	23	A-785	STRAP, CONNECTING ASS'Y.	
1	22	A-784	STRAP, CONNECTING ASS'Y.	
1	21	MS-514-2	STRAP, CONNECTING	
1	20	MS-513-9		
1	19	MS-514-4		
1	18	MS-513-7		
1	17	MS-513-5		
1	16	MS-513-3		
2	15	MS-513-2		
1	14	MS-513-1		
1	13	MS-515-8		
1	12	MS-515-7		
1	11	MS-515-6		
3	10	MS-515-5		
5	9	MS-515-3		
1	8	MS-515-2		
1	7	A-786-1	STRAP, CONNECTING ASS'Y.	
1	6	A-676	TANK COIL SUB-ASS'Y. (C.W.)	L104
1	5	A-675-677	TANK COIL SUB-ASS'Y. (C.W.)	L102
1	4	SW-144	SWITCH, ROTARY	
	3		DELETED	
22	2	EY-100-5	EYELET	
1	1	SW-145	SWITCH, ROTARY	

NOTICE TO PERSONS RECEIVING THIS DRAWING

THE TECHNICAL MATERIEL CORPORATION claims proprietary right in the material disclosed hereon. This drawing is issued in confidence for engineering information only and may not be reproduced or used to manufacture anything shown hereon without permission from THE TECHNICAL MATERIEL CORPORATION to the user. This drawing is loaned for mutual assistance and is subject to recall at any time.

Property of:
 THE TECHNICAL MATERIEL CORPORATION
 MAMARONECK, NEW YORK

3	PICTORIAL CLARIFIED	4/23/57	1	16			
2	WIRING CHGD.						
1	ITEM B LENGTHENED						
ISSUE	ITEM	CHANGED FROM	DATE	CN. NO.	DRAFTS	CHECKER	ENG. APP.
TOLERANCES							SCALE:
ALL OTHERS							DRILL, PUNCH, COMMERCIAL STOCK SIZES AND MANUFACTURERS TOLERANCES ARE NOT INCLUDED.

1	TAC-1	132	A-782	1-27-54
REQ. PER UNIT	MODEL	PROJECT NO.	ASSY. NO.	DATE
USED ON				
FINISH & SPEC. NO.				

THE TECHNICAL MATERIEL CORP.			
MAMARONECK, NEW YORK			
COIL & SWITCH CONNECTIONS			
TAC-1			
DRAWN: [Signature]			
ELEC. DES. APP. [Signature]			
MECH. DES. APP. [Signature]			
CHECKED: [Signature]			
FINAL APPROVAL: [Signature]			
A-788 A			