

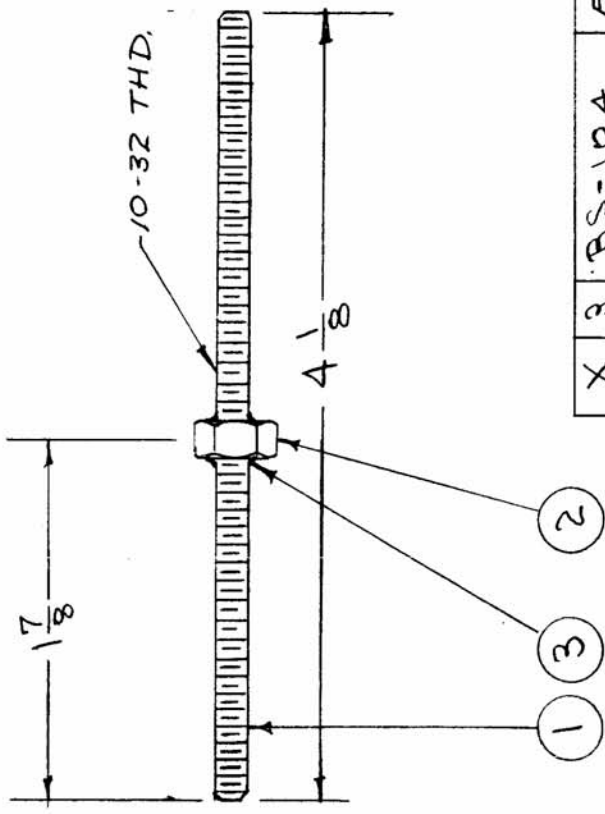
IF IT IS FOUND DESIRABLE TO CHANGE ANY TOLERANCE OR OTHER DETAIL SPECIFIED ON THIS DRAWING NOTIFY THE PURCHASER PROMPTLY.

MAXIMUM ALLOWABLE TOLERANCES HAVE BEEN DETERMINED AND DEVIATIONS WILL BE CAUSE FOR REJECTION. REMOVE ALL BURRS AND SHARP EDGES

A-785 B

USED ON

AMT PER UNIT	MODEL	PROJECT NO.	ASSY. NO.	DATE
2	TAC-1	132	A-723	1-25-54



10-32 THD. CLASS 2 FIT, AFTER PLATING.

X 3	BS-104	EUTECTIC, TIN WELD	
1 2	NTH1032BC12	NUT, HEX	
1 1	SM-128	ROD, FEED THRU	N.D.
REQ. ITEM	PART NO.	DESCRIPTION	SYMBOL
STOCK SIZE <b>BRASS</b> # MATERIAL      WEIGHT PER PC. # TYPE & TEMPER # HEAT TREAT. SPEC. SILVER PLATE .0002 FINISH & SPEC. NO.			
THE TECHNICAL MATERIEL CORP. MAMARONECK, NEW YORK FEED-THRU ROD ASSEMBLY TAC-1 6-3-5-54 DRAWN <i>AMS</i> ELEC. DES. APP. <i>WDC</i> CHECKED <i>AMS</i> MECH. DES. APP. <i>WDC</i> FINAL APPROVAL A-785 B			

B 1	1 1/8 WAS 2	4 1/8 WAS 4	4/9/57	2	16	AND
A 1	ITEM 3 WAS BS-100		10/25/54	1	P.B.	WDC
ISSUE ITEM	CHANGED FROM	DATE	CN. NO.	DRAFTS	CHECKER	ENG. APP.
TOLERANCES SCALE # DEC. DIM. ± FRAC. DIM. ± 1/16 OTHERS ANGULAR DIM. ±						
DRILL, PUNCH, COMMERCIAL STOCK SIZES AND MANUFACTURERS TOLERANCES ARE NOT INCLUDED.						