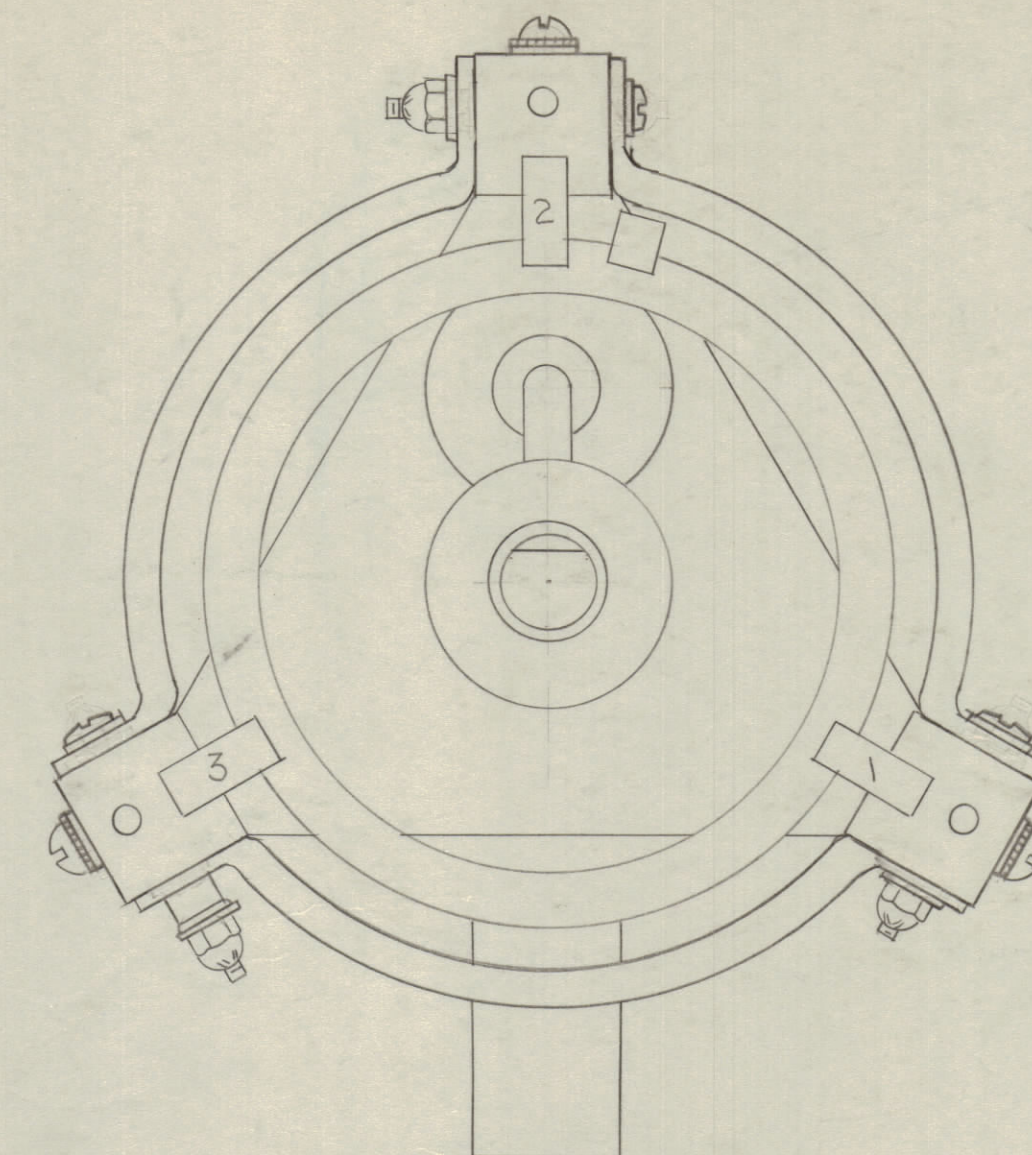
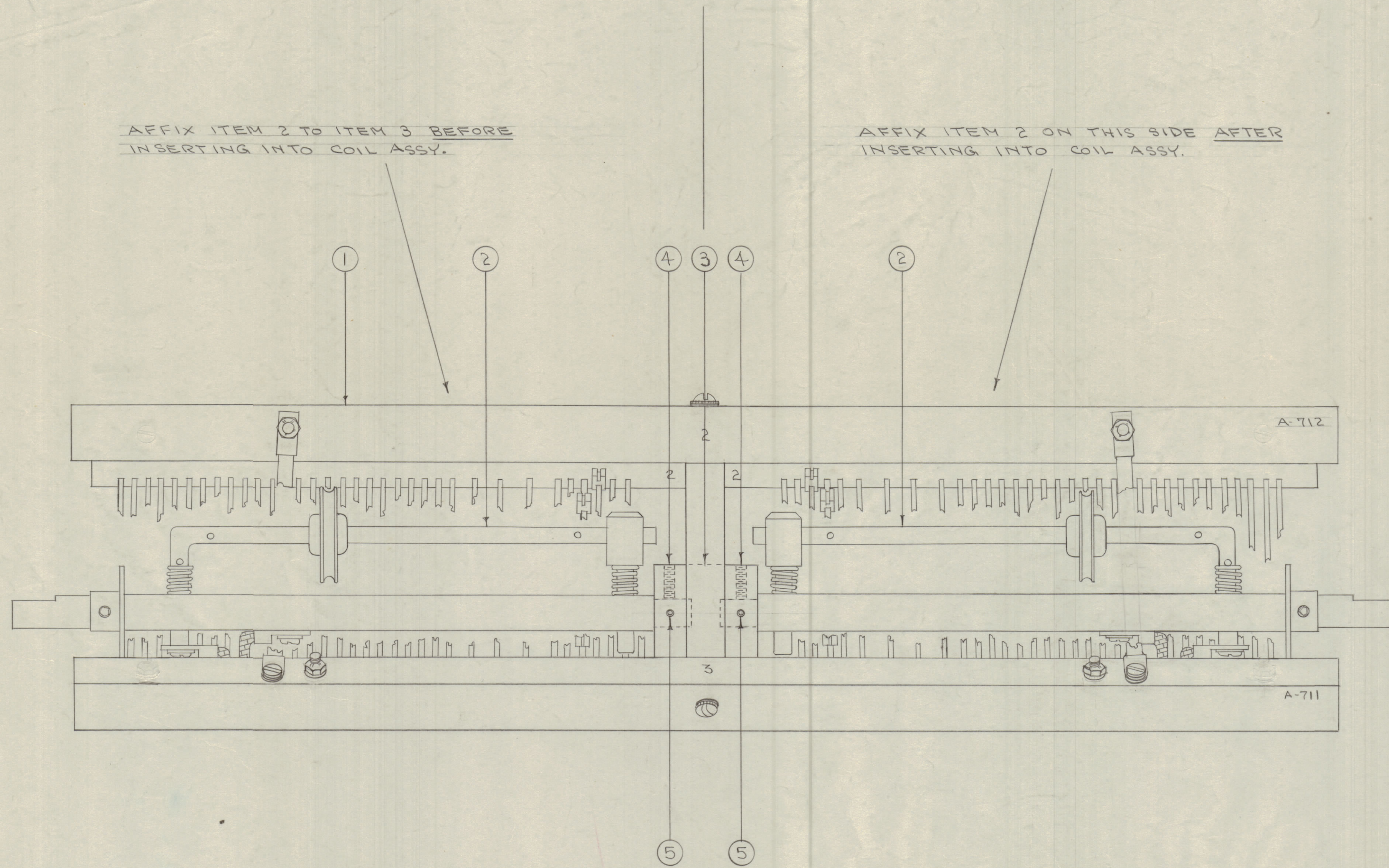


IF IT IS FOUND DESIRABLE TO CHANGE ANY TOLERANCE OR OTHER DETAIL SPECIFIED ON THIS DRAWING NOTIFY THE PURCHASER PROMPTLY.
 MAXIMUM ALLOWABLE TOLERANCES HAVE BEEN DETERMINED AND DEVIATIONS WILL BE CAUSE FOR REJECTION. REMOVE ALL BURRS AND SHARP EDGES

AFFIX ITEM 2 TO ITEM 3 BEFORE INSERTING INTO COIL ASSY.

AFFIX ITEM 2 ON THIS SIDE AFTER INSERTING INTO COIL ASSY.



A-719 B

NOTE

ITEMS 2 & 3 # MAIN BEARINGS MUST BE LUBRICATED LIGHTLY WITH ITEM 6.

NOTICE TO PERSONS RECEIVING THIS DRAWING

THE TECHNICAL MATERIEL CORPORATION claims proprietary right in the material disclosed hereon. This drawing is issued in confidence for engineering information only and may not be reproduced or used to manufacture anything shown hereon without permission from THE TECHNICAL MATERIEL CORPORATION to the user. This drawing is loaned for mutual assistance and is subject to recall at any time.

Property of:

THE TECHNICAL MATERIEL CORPORATION
 MAMARONECK, NEW YORK

B	1	IT.5 WAS PN-109-4	8/10/54	12061	SB	28	SP
A	1	ITEMS & NOTE ADDED	4/10/57		YB	JAW	DP
ISSUE	ITEM	CHANGED FROM	DATE	CN. NO.	DRAFTS	CHECKER	ENG. APP.
TOLERANCES		SCALE: _____					
ALL OTHERS	DEC. DIM. ±	DRILL, PUNCH, COMMERCIAL STOCK					
	FRAC. DIM. ±	SIZES AND MANUFACTURERS					
	ANGULAR DIM. ±	TOLERANCES ARE NOT INCLUDED.					

1	TAC-1	132	A-782	1-27-54
REQ. PER UNIT	MODEL	PROJECT NO.	ASSY. NO.	DATE
USED ON				

X	6	GL-114	COMPOUND, LUBRICANT	
2	5	PN92-0625-15	PIN, ROLL	
2	4	AN565-D-8H5	SCREW, HEADLESS SET	
1	3	A-716	CONNECTING BUSHING ASSY.	
2	2	A-646	CONTACT WHEEL/SHAFT ASSY.	
1	1	A-674	COIL SUB ASSY.	
REQ. ITEM	PART NO.	DESCRIPTION		SYMBOL
THE TECHNICAL MATERIEL CORP. MAMARONECK, NEW YORK				
COIL/SHAFT ASSY.				
TAC-1				
TYPE & TEMPER		C.D.D. 1/24/54	ORP	WJC
HEAT TREAT. SPEC.		JAW	ORP	WJC
FINISH & SPEC. NO.		FINAL APPROVAL		
		A-719 B		