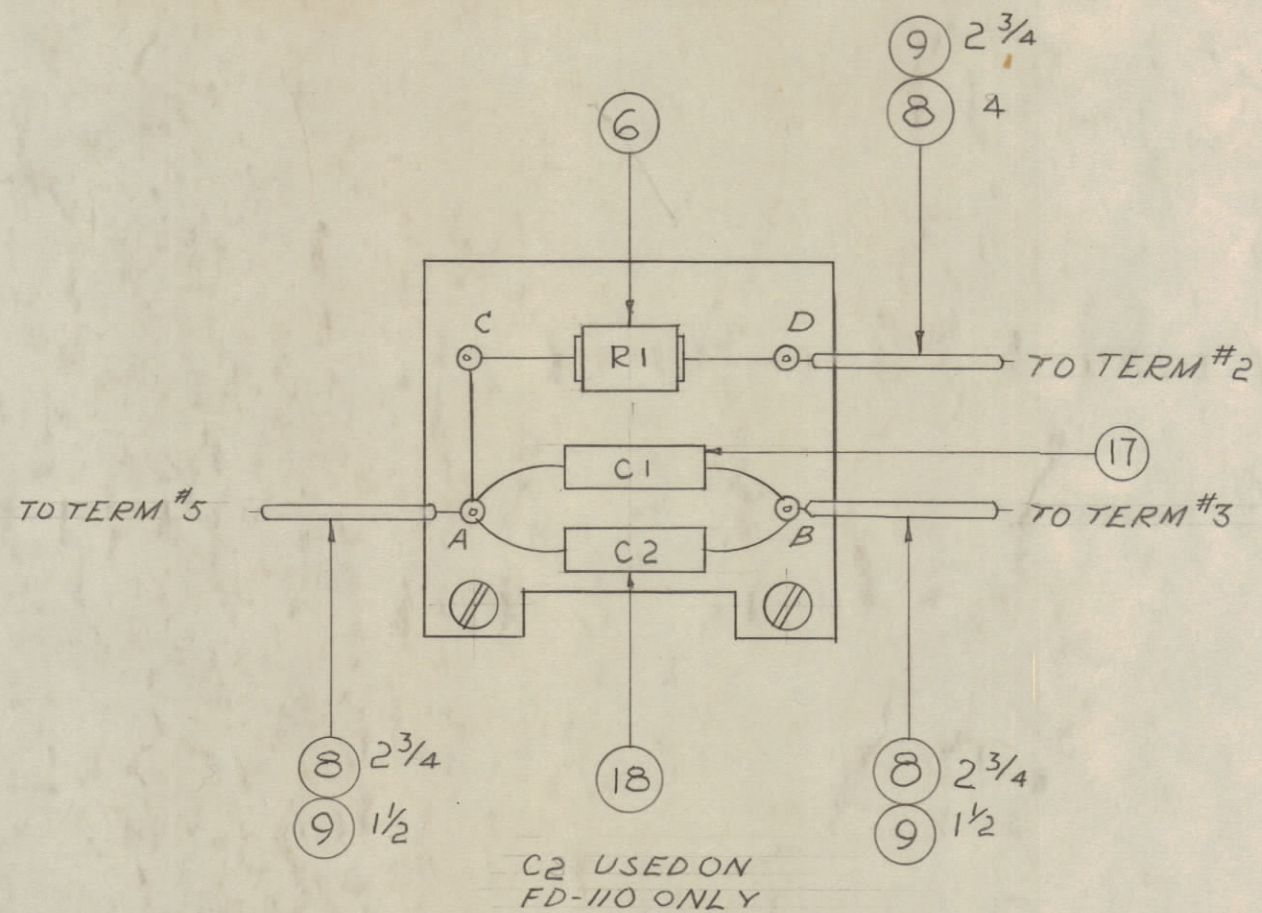


IF IT IS FOUND DESIRABLE TO CHANGE ANY TOLERANCE OR OTHER DETAIL SPECIFIED ON THIS DRAWING NOTIFY THE PURCHASER PROMPTLY.
 MAXIMUM ALLOWABLE TOLERANCES HAVE BEEN DETERMINED AND DEVIATIONS WILL BE CAUSE FOR REJECTION. REMOVE ALL BURRS AND SHARP EDGES

CONNECT AND SOLDER COMPONENTS TO TERM BOARD

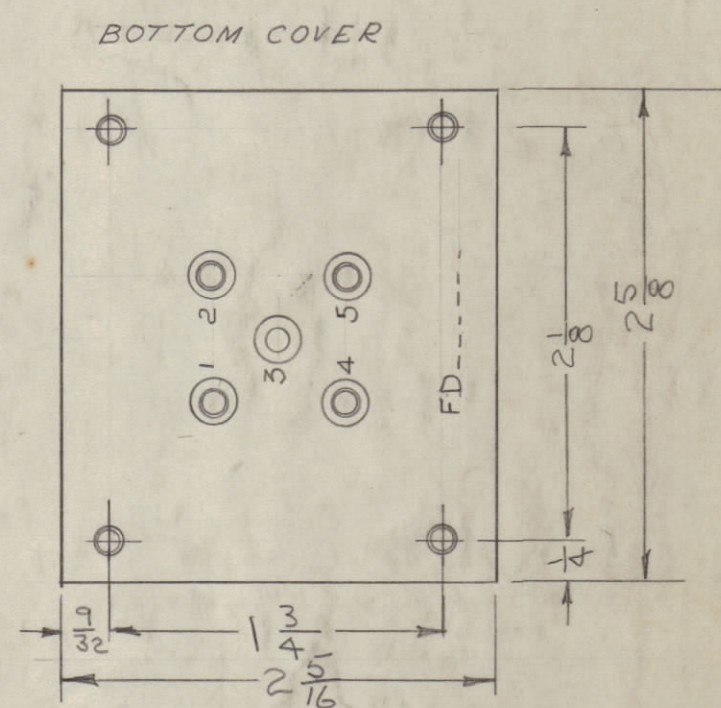
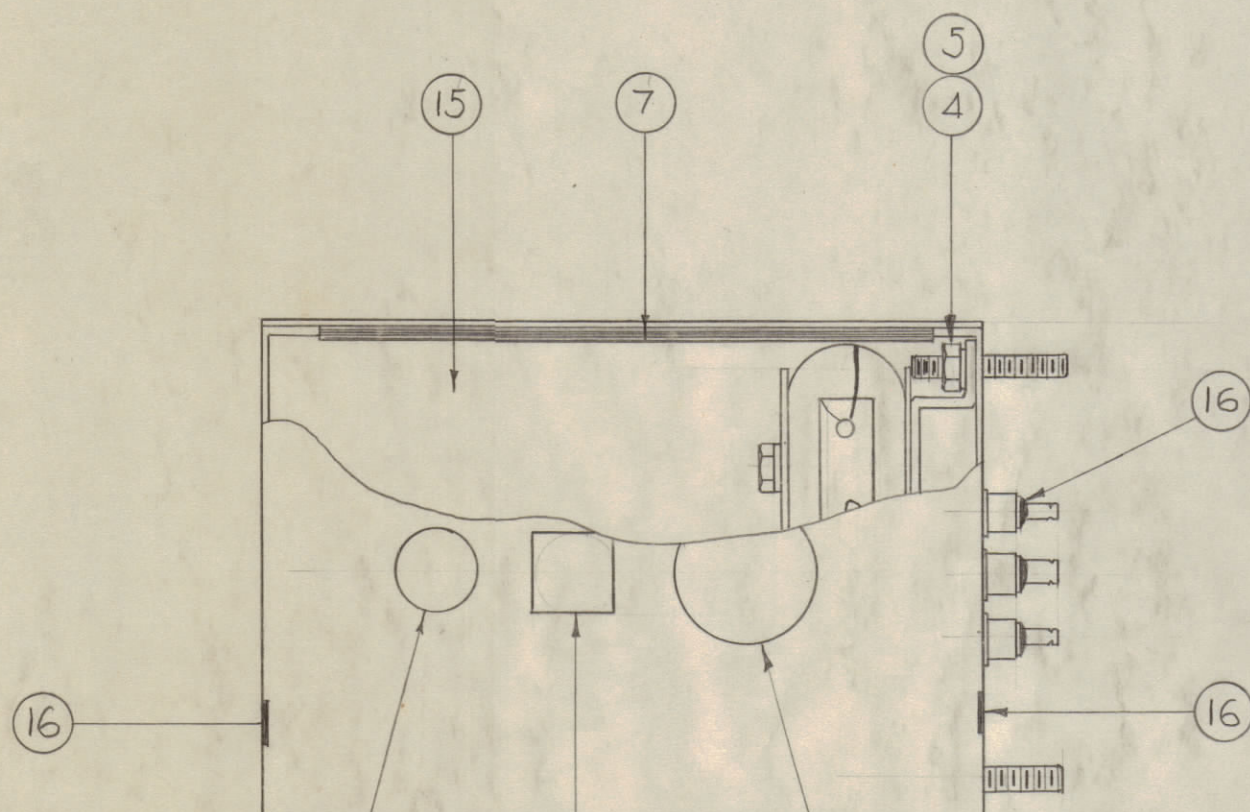
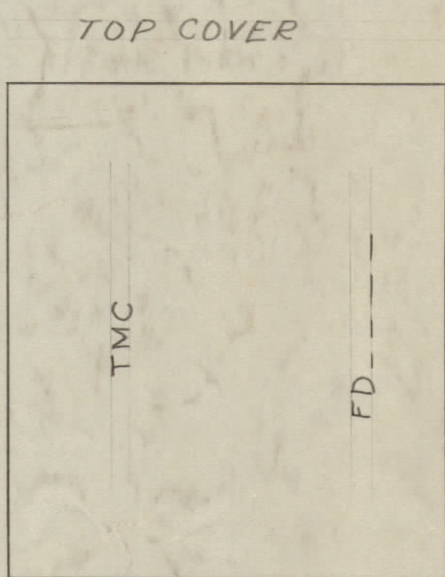
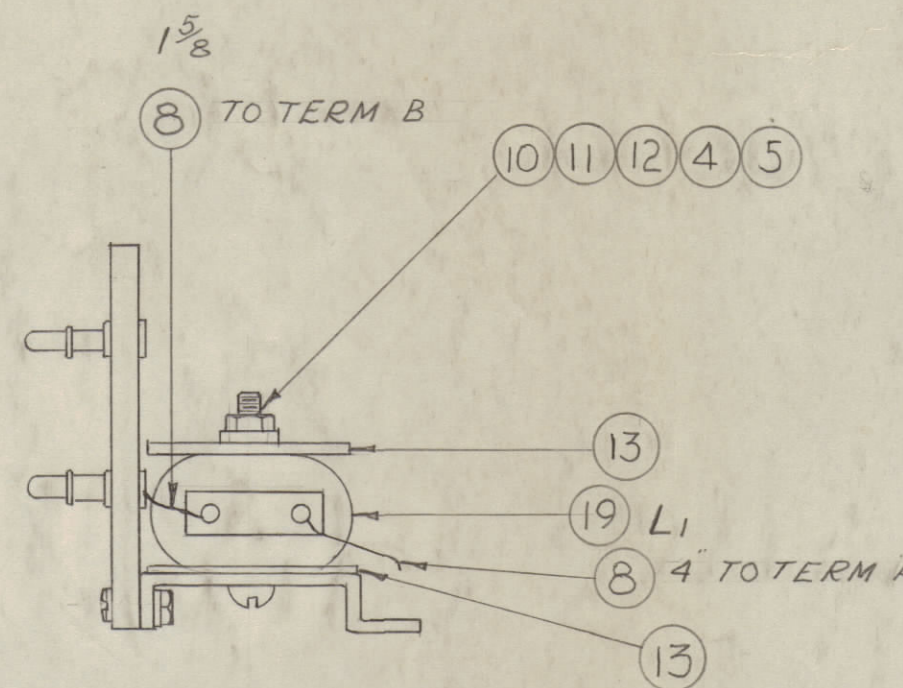


1. SECURE TORROID COIL TO BRACKET (AS SHOWN)
2. SOLDER COIL TO TERMINALS "A & B" (AS SHOWN)

NOTICE TO PERSONS RECEIVING THIS DRAWING

THE TECHNICAL MATERIEL CORPORATION claims proprietary right in the material disclosed hereon. This drawing is issued in confidence for engineering information only and may not be reproduced or used to manufacture anything shown hereon without permission from THE TECHNICAL MATERIEL CORPORATION to the user. This drawing is loaned for mutual assistance and is subject to recall at any time.

Property of:
 THE TECHNICAL MATERIEL CORPORATION
 MAMARONECK, NEW YORK



A-751 A

STAMP TOP COVER WITH 1/8 METAL STAMP AS SHOWN. COAT WITH CLEAR FUNGICIDAL LACQUER (S-113)

APPROVAL INSPECTION STAMP NP-136

STAMP BOTTOM COVER WITH FD-117 METAL STAMP (GOTHIC) AS SHOWN. COAT WITH CLEAR FUNGICIDAL LACQUER (S-113)

1. BEFORE SOLDERING BOTTOM COVER TEST AS PRESCRIBED IN TMC SPEC. NO. S-176.
2. LINE INSIDE OF CAN WITH ITEM # 7 & POUR COMPOUND (ITEM # 15) WITHIN 1/2" FROM TOP OF CAN. INSERT ITEM # 16.
3. BEFORE SOLDERING TOP COVER TEST AS PRESCRIBED IN TMC SPEC. NO. S-176.

REF. VALUE CHART CH-129

REQ.	ITEM	PART NO.	DESCRIPTION	SYMBOL
1	19	SEE CHART CH-129	COIL	L1
1	18	"	CAPACITOR	C2
1	17	"	"	C1
X	16	BS-100	SOLDER, SOFT	
X	15	GL-110	COMPOUND, POTTING	
1	14	BX-111	CAN & COVER	
2	13	WA-110-1	WASHER, PAPER	
1	12	FW06MRC	WASHER, FLAT	
5/8	11	PX-104-1-133	INSULATION, SLEEVING (SZ. 8)	
1	10	SCR50632B06	SCREW, MACH.	
X	9	PX-104-1-022	INSULATION, SLEEVING (SZ. 24)	
15/16	8	WL-100-8	WIRE BUSS (SIZE 24)	
1	7	IM-28	INSULATION, SIDES	
1	6	RB100E82001F	RESISTOR, FIXED	R1
5	5	NTH0632BC8	NUT, HEX	
5	4	LW506MRC	LOCKWASHER, SPLIT	
2	3	SCB50632B06	SCREW, MACH.	
1	2	MS-231	BRACKET, FILTER	
1	1	A-522	TERM. BD. ASSY	

REQ.		PART NO.		DESCRIPTION		SYMBOL	
—		—		THE TECHNICAL MATERIEL CORP.		MAMARONECK, NEW YORK	
—		—		FILTER, DISCRIMINATOR			
—		—		FD-117-(*)			
—		—		MATERIAL		WEIGHT PER PC.	
—		—		TYPE & TEMPER		AB. 10-4-54	
—		—		DRAWN		K2	
—		—		ELEC. DES. APP.		A. J. J.	
—		—		MECH. DES. APP.			
—		—		HEAT TREAT. SPEC.		CHECKED	
—		—		FINISH & SPEC. NO.		FINAL APPROVAL	

ISSUE	ITEM	CHANGED FROM	DATE	CN. NO.	DRAFTS	CHECKER	ENG. APP.
A		S176 WAS 3184	11-7-66	17207	HLA		

MODEL	PROJECT NO.	ASS'Y. NO.	DATE
FD-117-(*)	170	—	10-4-54