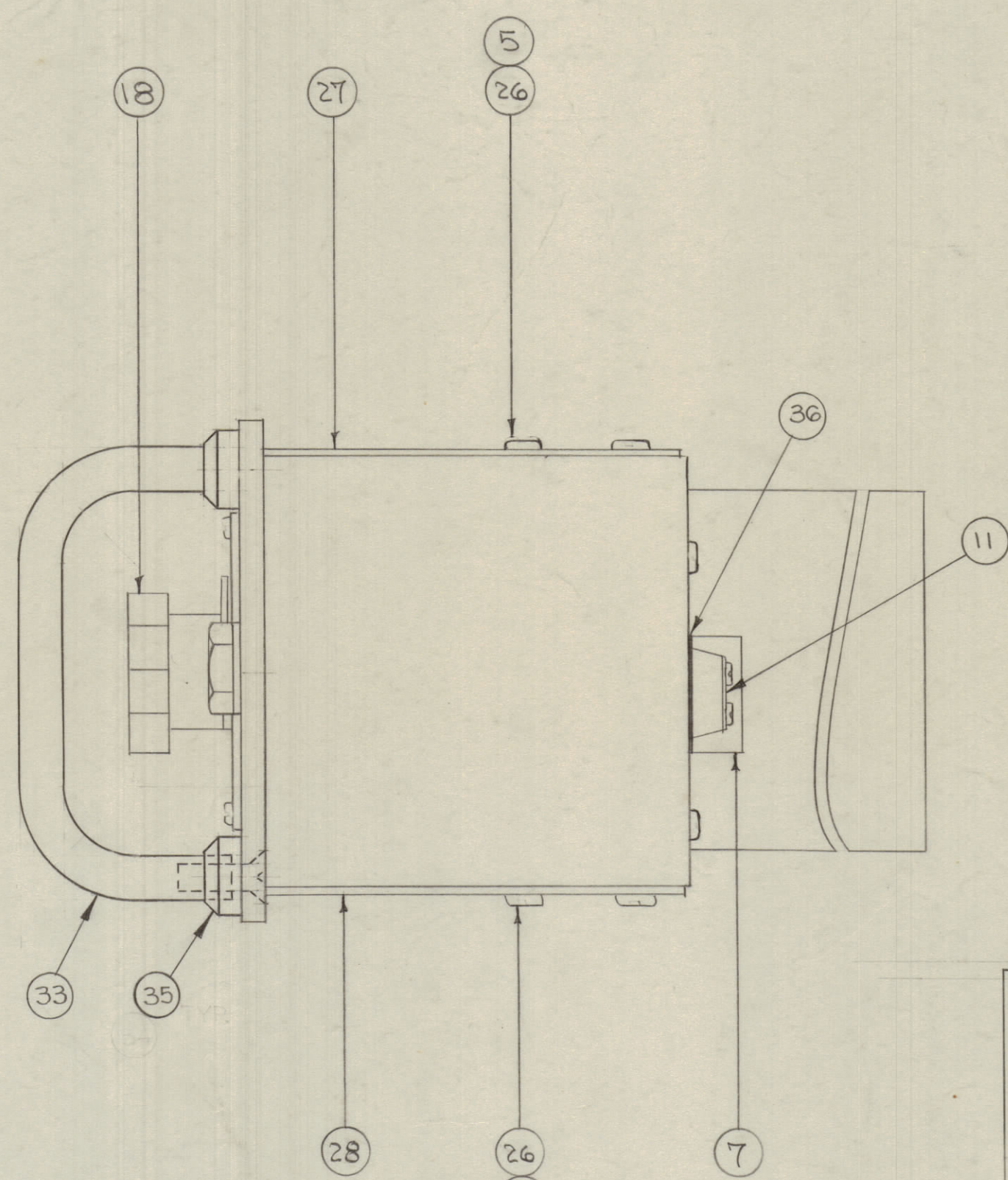
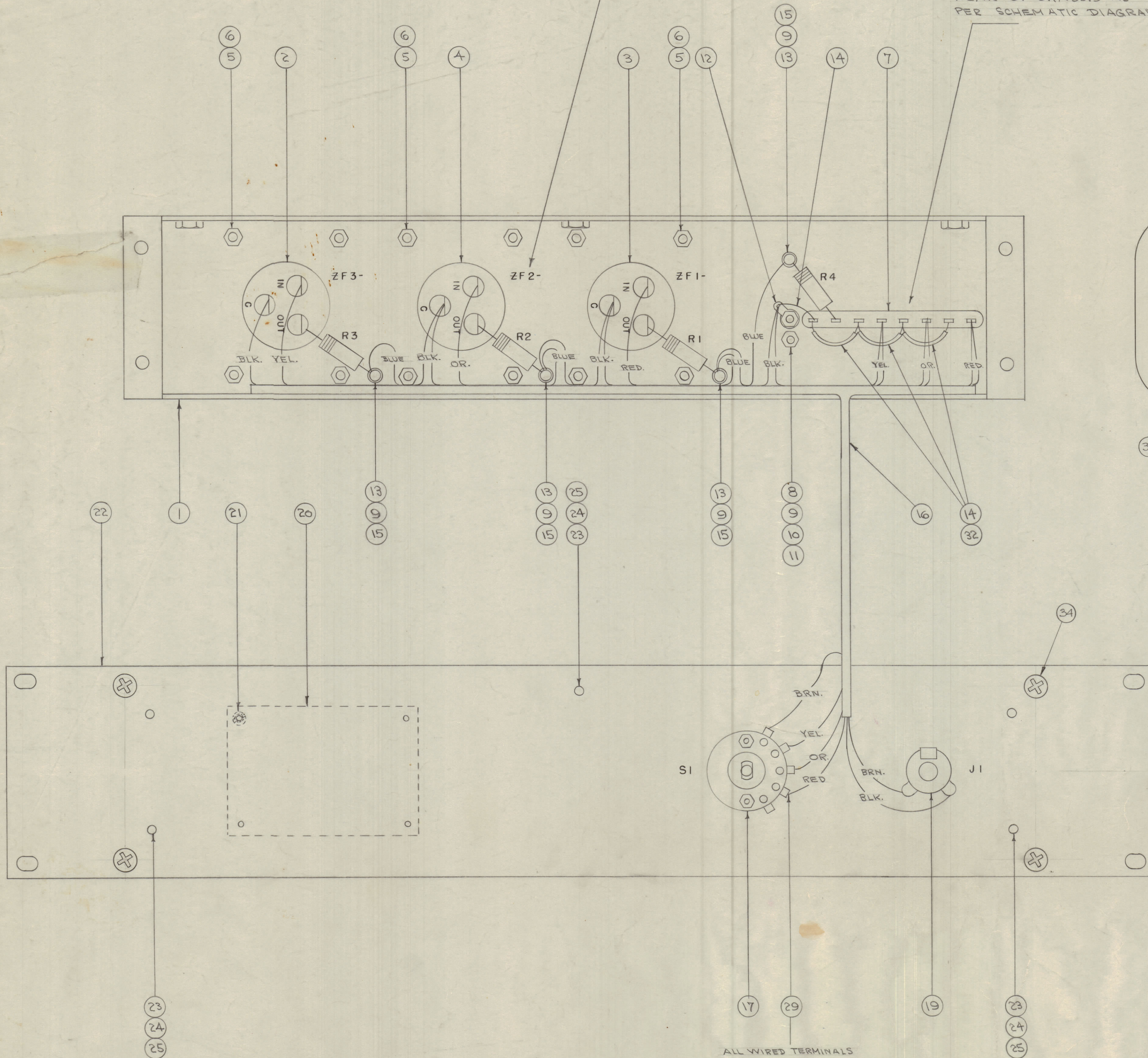


IF IT IS FOUND DESIRABLE TO CHANGE ANY TOLERANCE OR OTHER DETAIL SPECIFIED ON THIS DRAWING NOTIFY THE PURCHASER PROMPTLY.  
 MAXIMUM ALLOWABLE TOLERANCES HAVE BEEN DETERMINED AND DEVIATIONS WILL BE CAUSE FOR REJECTION. REMOVE ALL BURRS AND SHARP EDGES

SEE SYMBOL CHART FOR APPLICABLE LETTERS

STAMP NUMBERS FROM 1-8 & E1 ON REAR OF CHASSIS AS PER SCHEMATIC DIAGRAM



FOR CORRECT NAMEPLATE SEE SPEC. S-278

NOTE:

FOR MODEL NUMBER	USE TMC NUMBER	ITEM NO.	REQ.	SYMBOL
RSF-2-A	FX-139-1215	3	1	ZF1A
	FX-140-425	4	1	ZF2A
	FX-139-2125	2	1	ZF3A
RSF-2-B	FX-139-1445	3	1	ZF1B
	FX-140-595	4	1	ZF2B
	FX-139-2295	2	1	ZF3B
RSF-2-C	FX-139-1615	3	1	ZF1C
	FX-140-765	4	1	ZF2C
	FX-139-2465	2	1	ZF3C
RSF-2-D	FX-139-1785	3	1	ZF1D
	FX-139-935	4	1	ZF2D
	FX-139-2635	2	1	ZF3D
RSF-2-E	FX-139-1955	3	1	ZF1E
	FX-139-1105	4	1	ZF2E
	FX-139-2805	2	1	ZF3E

QTY	ITEM	PART NO.	DESCRIPTION	SYMBOL
1	36	PX-337-8	INSULATION STRIP	
4	35	CU-139-2	FERRULE, HANDLE	
4	34	SCFP1032BN10	SCREW, MACHINE	
2	33	HA-102-11BN	HANDLE	
X	32	CK-249	SCHEMATIC DIAGRAM	
3"	31	FX-104-1-034	INSULATION, SLEEVING	
4	30	RC20GF271K	RESISTOR, FIXED	R-1-2 13-4
X	29	BS-100	SOLDER, SOFT	
1	28	MS-384	COVER, BOTTOM	
1	27	MS-383	" , TOP	
10	26	SCBP0632BNS	SCREW, MACHINE	
5	25	NTH0832BN11	NUT, HEX	
5	24	LWS08MRN	WASHER, LOCK	
5	23	SCFP0832BN8	SCREW, MACHINE	
1	22	MS-382	PANEL, FRONT	
4	21	SFB0256GN3	SCREW, THD. CUTTING	
1	20	NP-XXX	NAME PLATE	
1	19	JJ-034	JACK	J1
1	18	MP-100-4	KNOB, INST. TYPE	
1	17	SW-105	SWITCH, ROTARY	S1
1	16	CA-190	CABLE ASSEMBLY	
4	15	TE-102-1	TERMINAL, TURRET	
5"	14	WL-100-7	WIRE, BUSS BAR	
8	13	SCBP0440BNA	SCREW, MACHINE	
1	12	TE-104-1	TERMINAL, LOCKING	
2	11	MS-154-1	STRADDLE PLATE	
4	10	NTH0440BNG	NUT, HEX	
7	9	LWS04MRN	WASHER, LOCK	
4	8	SCBP0440BNB	SCREW, MACHINE	
1	7	TM-100-8	TERMINAL STRIP	E1
17	6	NTH0632BMO	NUT, HEX	
21	5	LWS06MRN	WASHER, LOCK	
1	4	FX-	FILTER, HFO	SEE NOTE
1	3	FX-	" , BFO	SEE NOTE
1	2	FX-	" , RFG	SEE NOTE
1	1	A-506	CHASSIS ASSEMBLY	

NOTICE TO PERSONS RECEIVING THIS DRAWING

THE TECHNICAL MATERIEL CORPORATION claims proprietary right in the material disclosed herein. This drawing is issued in confidence for engineering information only and may not be reproduced or used to manufacture anything shown hereon without permission from THE TECHNICAL MATERIEL CORPORATION to the user. This drawing is loaned for mutual assistance and is subject to recall at any time.

Property of:

THE TECHNICAL MATERIEL CORPORATION  
 MAMARONECK, NEW YORK

MODEL	PROJECT NO.	ASSY. NO.	DATE
RSF-3			5-17-53
RSF-2(A-B-C-D-E)	170		5-13-54

STOCK SIZE	THE TECHNICAL MATERIEL CORP. MAMARONECK, NEW YORK		
MATERIAL	FINAL ASSEMBLY		
TYPE & TEMPER	RSP		
HEAT TREAT. SPEC.	CDD. 5-13-54		
FINISH & SPEC. NO.	DRAWN: KZ ELEC. DES. APP. MECH. DES. APP. A. J. J.		
	CHECKED: H. J. J. SUPERSEDES A-510 RSF-1		
	FINAL APPROVAL: A-748 C		

3	RSF-2 REF ADDED	5/17/53	9003		
2	DISCREPANCY CLARIFIED				
1	ITEMS (20) (20) (20) ADDED				
1	NOTE ADDED RE: NAME PLATE	4/14/54	2	6560	
1	ITEM 30 WAS RC20GF2017	7/1/54	1		
ISSUE	ITEM	CHANGED FROM	DATE	CN. NO.	DRAFTS CHECKER ENG. APP.
TOLERANCES					
ALL DEC. DIM. ±			DRILL, PUNCH, COMMERCIAL STOCK		
OTHERS FRACTIONAL DIM. ±			SIZES AND MANUFACTURERS		
			TOLERANCES ARE NOT INCLUDED.		