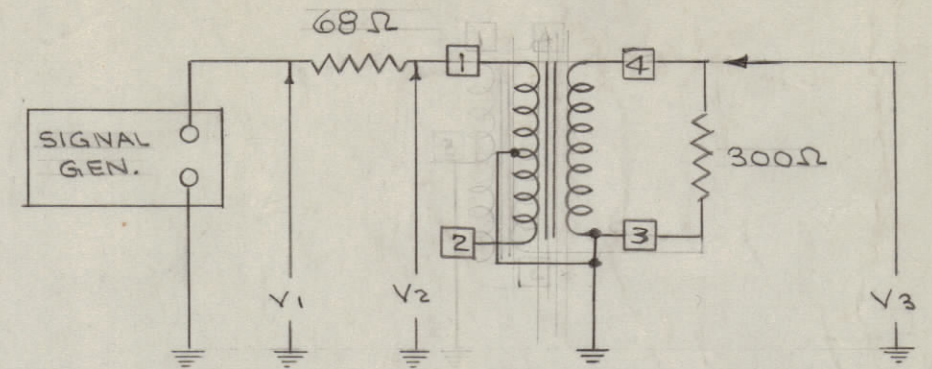
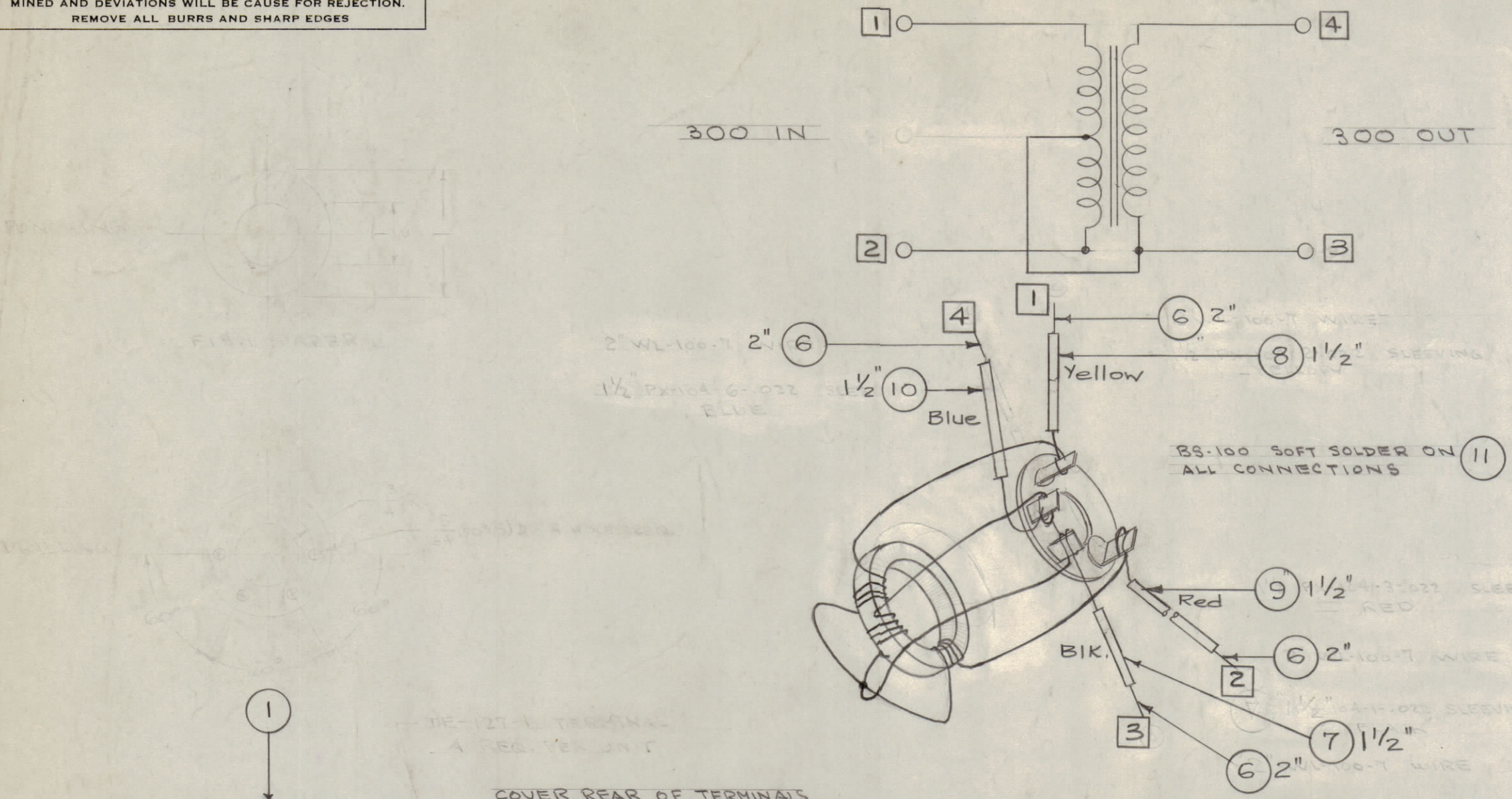


IF IT IS FOUND DESIRABLE TO CHANGE ANY TOLERANCE OR OTHER DETAIL SPECIFIED ON THIS DRAWING NOTIFY THE PURCHASER PROMPTLY.

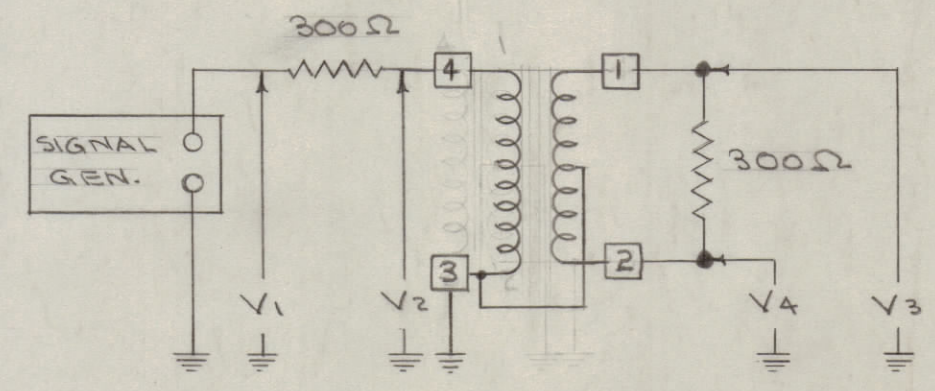
MAXIMUM ALLOWABLE TOLERANCES HAVE BEEN DETERMINED AND DEVIATIONS WILL BE CAUSE FOR REJECTION. REMOVE ALL BURRS AND SHARP EDGES

TEST PROCEDURES



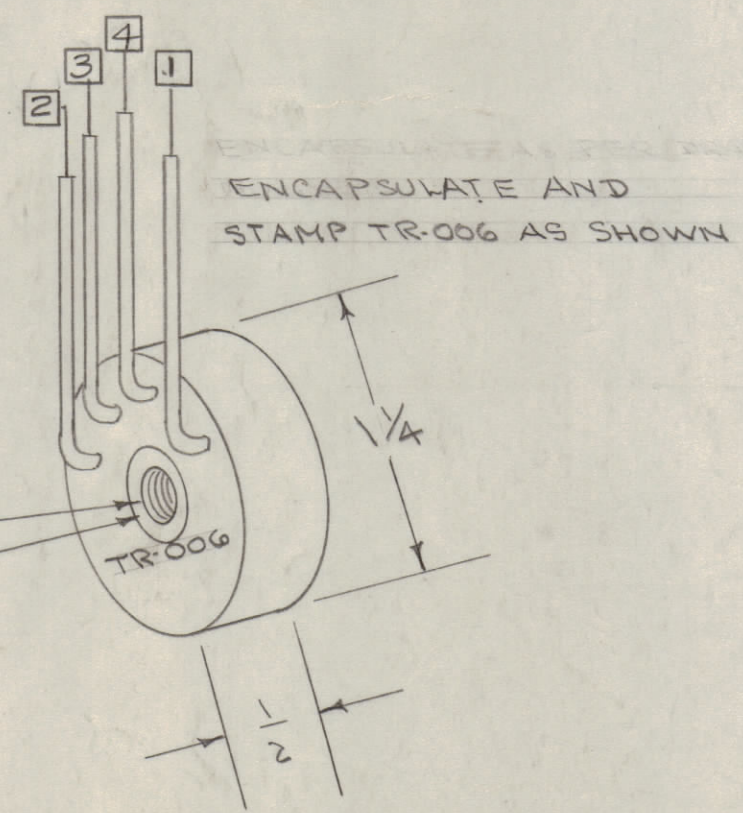
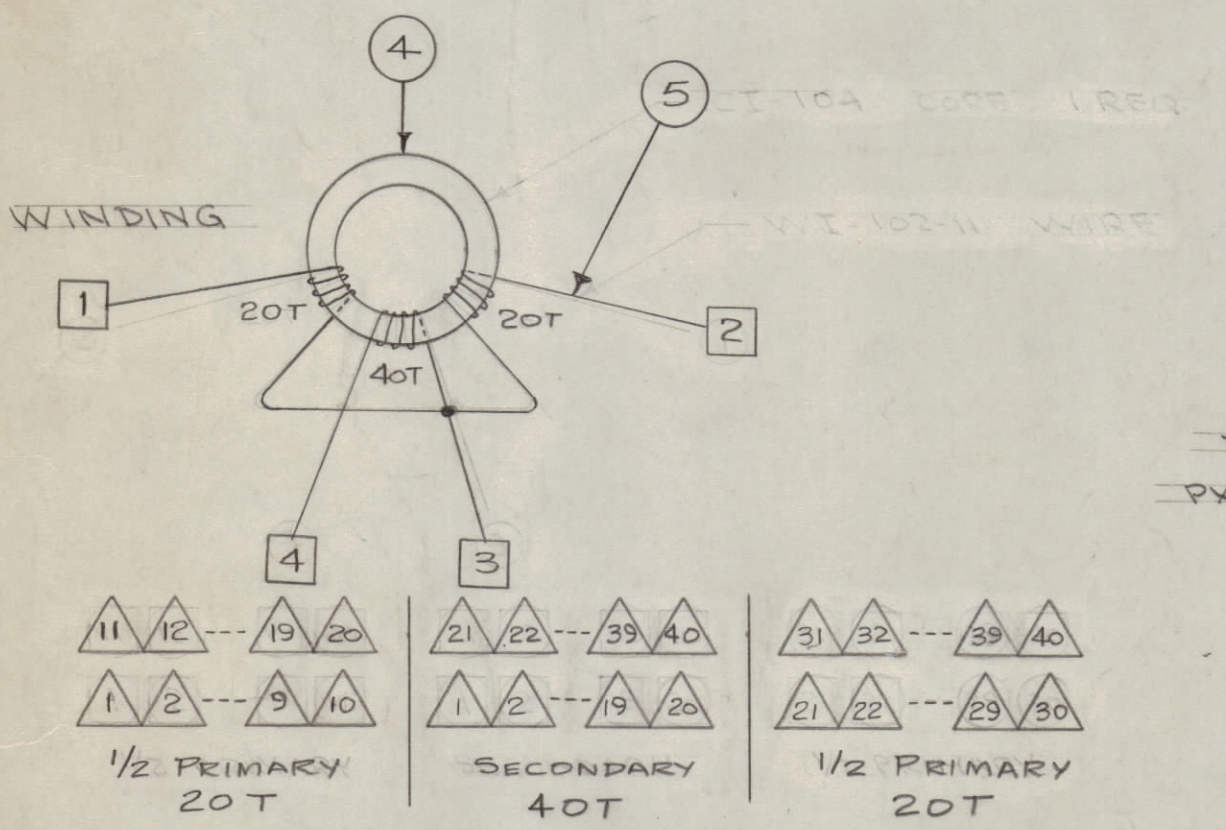
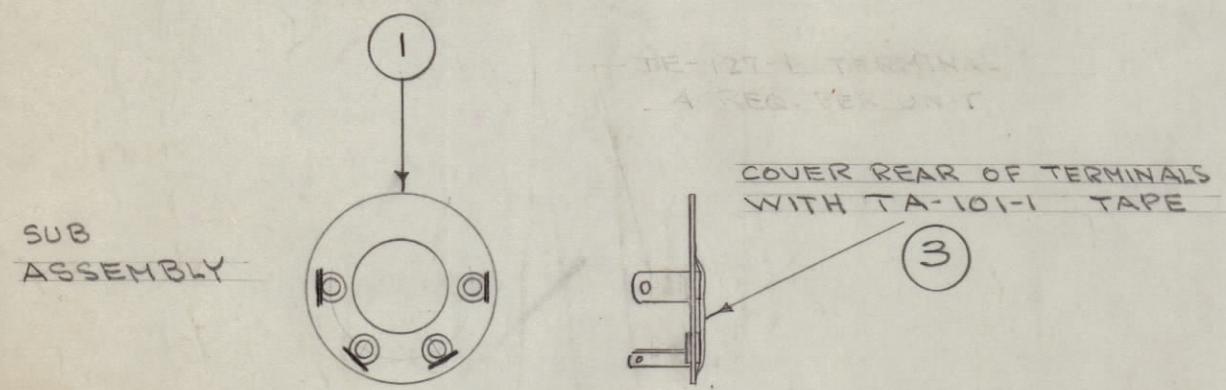
freq.	V1	V2	V3
100 Kc	1.0	.53	.9
200 Kc	1.0	.54	.99
300 Kc	1.0	.58	1.04
400 Kc	1.0	.60	1.08

HEATHKIT VTVM



freq.	V1	V2	V3	V4
100 Kc	1.0	.5	.18	.2
200 Kc	1.0	.5	.2	.2
300 Kc	1.0	.5	.2	.21
400 Kc	1.0	.52	.22	.2

HEATHKIT VTVM



- = ITEM NUMBERS
- = TERMINAL NUMBERS
- △ = TURN NUMBERS

NOT TO BE RELEASED W/O AUTHORIZATION

AUTH. BY: _____

DATE: _____

ISSUE	ITEM	CHANGED FROM	DATE	CN. NO.	DRAFTS	CHECKER	ENG. APP.
C		REVISED 300Ω TEST SCHEM.	7/27/66	16662	RME	gcb	
B	1	ITEM, TERM, & TURN LEGEND ADDED, 7 TERM. RE-NUMBERED WINDING REDRAWN	4/24/58	2	16		
A	2	A-1327-1234 ADDED	7/24/54	1			
A	1	ITEM TWO DELETED					

MODEL	PROJECT NO.	ASS'Y. NO.	DATE
TR-006			4-30-54

REQ.	ITEM	PART NO.	DESCRIPTION	SYMBOL
1	13	PX-121	CORE, PHENOLIC	
X	12	GL-106	COMPOUND, PLASTIC	
X	11	BS-100	SOLDER, SOFT	
1/2	10	PX-104-6-022	INSULATION, SLEEVING (BLUE)	
1/2	9	PX-104-3-022	" , " (RED)	
1/2	8	PX-104-2-022	" , " (YEL.)	
1/2	7	PX-104-1-022	" , " (BLK.)	
8"	6	WL-100-7	WIRE, BUSS BAR 22 GA.	
X	5	WI-102-11	WIRE	
1	4	CI-104	CORE	
X	3	TA-101-1	TAPE	
4	2	TE-127-1	TERMINAL, TURRET	
1	1	A-1327-1234	INSULATOR, SUB-ASSY.	

THE TECHNICAL MATERIEL CORP.	
MAMARONECK, NEW YORK	
TR-006 ASSEMBLY	
STOCK SIZE	
MATERIAL	
WEIGHT PER PC.	
TYPE & TEMPER	CDD. 4-30-54
HEAT TREAT. SPEC.	
FINISH & SPEC. NO.	

A-744 C