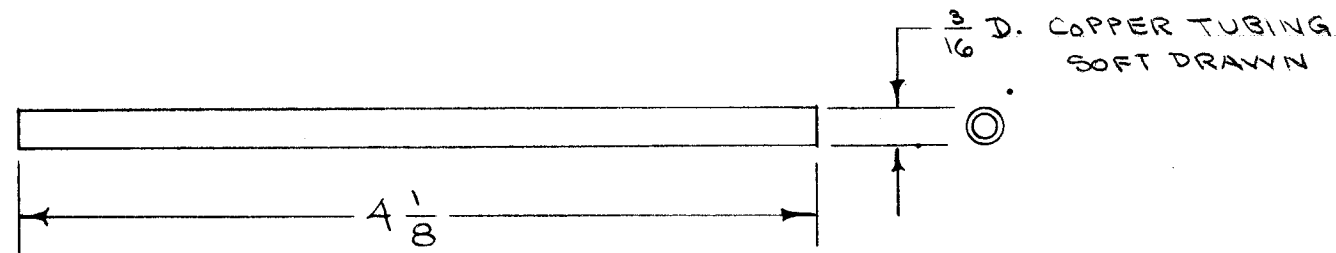


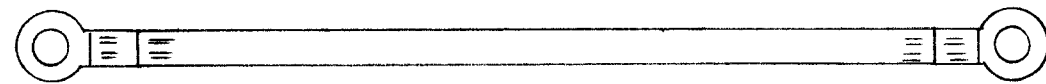
IF IT IS FOUND DESIRABLE TO CHANGE ANY TOLERANCE OR OTHER DETAIL SPECIFIED ON THIS DRAWING NOTIFY THE PURCHASER PROMPTLY.

MAXIMUM ALLOWABLE TOLERANCES HAVE BEEN DETERMINED AND DEVIATIONS WILL BE CAUSE FOR REJECTION. REMOVE ALL BURRS AND SHARP EDGES

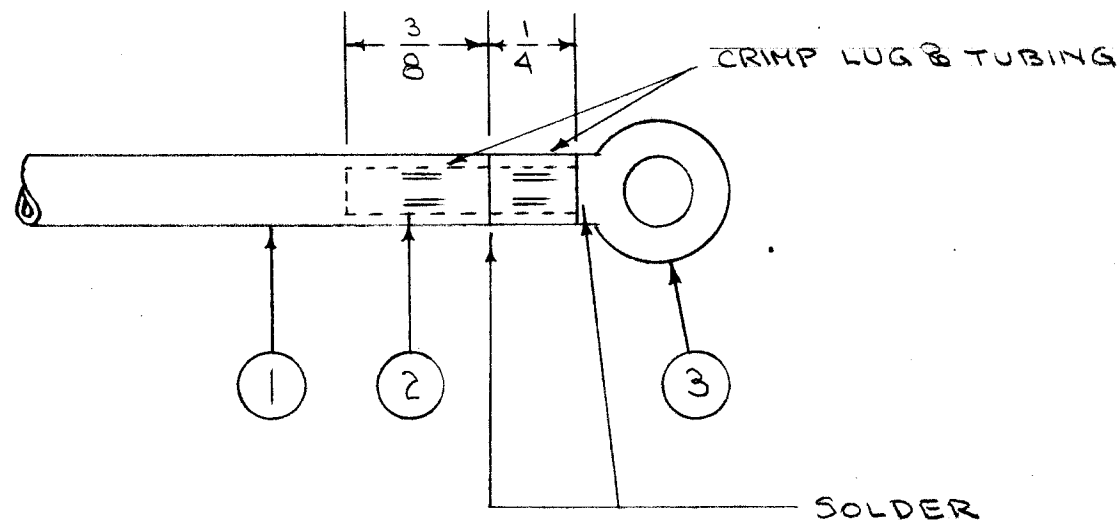
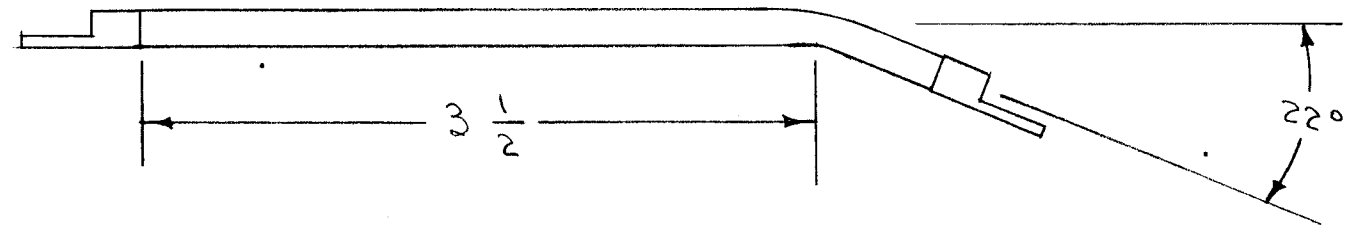
A  
A-729



A-729-1



A-729-2



REQ.	ITEM	PART NO.	DESCRIPTION	SYMBOL
X	4	BS-100	SOLDER, SOFT	
A	3	TE-141-3	LUG, TERMINAL	
3"	2	WL-100-1	WIRE, BUSS BAR	
2	1	FP-123	CONNECTOR (DRAWING)	
			THE TECHNICAL MATERIEL CORP. MAMARONECK. NEW YORK	
#			SWITCH-FEED THRU CONNECTOR	
#			ASSEMBLY TAC-1	
#			C.D.D. 1-5-54	
#			DRAWN	
#			ELEC. DES. APP.	
#			MECH. DES. APP.	
#			HEAT TREAT. SPEC.	
#			CHECKED	
#			FINAL APPROVAL	
#			A-729	
#			A	

ISSUE	ITEM	CHANGED FROM	DATE	CN. NO.	DRAFTS	CHECKER	ENG. APP.
A	1	REDRAWN - DASH #S ADDED		1	C.D.D.	<i>[Signature]</i>	<i>[Signature]</i>

1 EACH	TAC-1	132	A-719	A-723	1-25-54
REQ. PER UNIT	MODEL	PROJECT NO.	ASS'Y. NO.	DATE	

SCALE:  $\frac{1}{8}$   
 DRILL, PUNCH, COMMERCIAL STOCK SIZES AND MANUFACTURERS TOLERANCES ARE NOT INCLUDED.

ALL OTHERS  
 DEC. DIM.  $\pm$   
 FRAC. DIM.  $\pm$   
 ANGULAR DIM.  $\pm$

USED ON