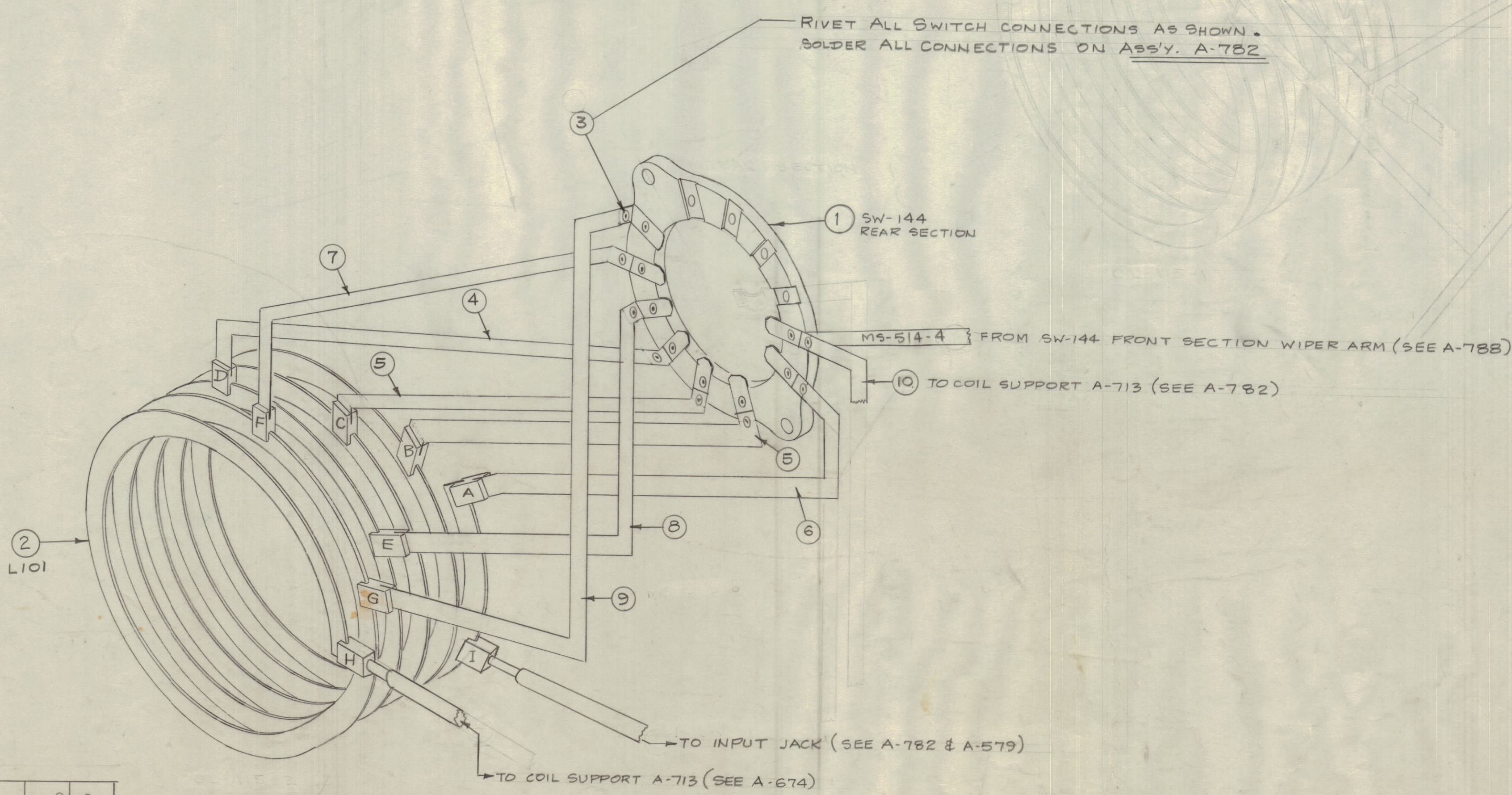


IF IT IS FOUND DESIRABLE TO CHANGE ANY TOLERANCE OR OTHER DETAIL SPECIFIED ON THIS DRAWING NOTIFY THE PURCHASER PROMPTLY.
 MAXIMUM ALLOWABLE TOLERANCES HAVE BEEN DETERMINED AND DEVIATIONS WILL BE CAUSE FOR REJECTION. REMOVE ALL BURRS AND SHARP EDGES.



NOTICE TO PERSONS RECEIVING THIS DRAWING
 THE TECHNICAL MATERIEL CORPORATION claims proprietary right in the material disclosed hereon. This drawing is issued in confidence for engineering information only and may not be reproduced or used to manufacture anything shown hereon without permission from THE TECHNICAL MATERIEL CORPORATION to the user. This drawing is loaned for mutual assistance and is subject to recall at any time.
 Property of:
 THE TECHNICAL MATERIEL CORPORATION
 MAMARONECK, NEW YORK

A-724
 A

4	PICTORIAL CLARIFIED						
3	VIEWS CHG'D.	1/22/57	1	16	<i>[Signature]</i>		
2	CL 115-1 DELE. (ADDED TO A-782)						
1	SWITCH VIEW DELETED						
ISSUE	ITEM	CHANGED FROM	DATE	CN. NO.	DRAFTS	CHECKER	ENG. APP.
TOLERANCES			SCALE:				
ALL DEC. DIM. ±			DRILL, PUNCH, COMMERCIAL STOCK				
OTHERS FRAC. DIM. ±			SIZES AND MANUFACTURERS				
			TOLERANCES ARE NOT INCLUDED.				

1	TAC-1	132	A-782	1-21-54
MODEL	PROJECT NO.	ASSY. NO.	DATE	
USED ON				

REQ. ITEM	PART NO.	DESCRIPTION	SYMBOL
1	10	MS-514-1 STRAP, CONNECTING	
1	9	MS-513-8	
1	8	MS-513-6	
1	7	MS-513-4	
1	6	MS-513-3	
2	5	MS-513-2	
1	4	MS-513-1 STRAP, CONNECTING	
8	3	EX-100-5 EYELET, FLAT	
1	2	A-678 LINK COIL SUB-ASSY. (CCW)	L101
1	1	SW-144 SWITCH, ROTARY, COUPLING	

THE TECHNICAL MATERIEL CORP.
 MAMARONECK, NEW YORK

SW-144 SUB ASSY. AND CONNECTIONS TAC-1

C.D.S. 1/21/54 *[Signature]* *[Signature]* *[Signature]*

DRAWN ELEC. DES. APP. MECH. DES. APP.

HEAT TREAT. SPEC. *[Signature]* *[Signature]* *[Signature]*

CHECKED FINAL APPROVAL

FINISH & SPEC. NO. A-724 A