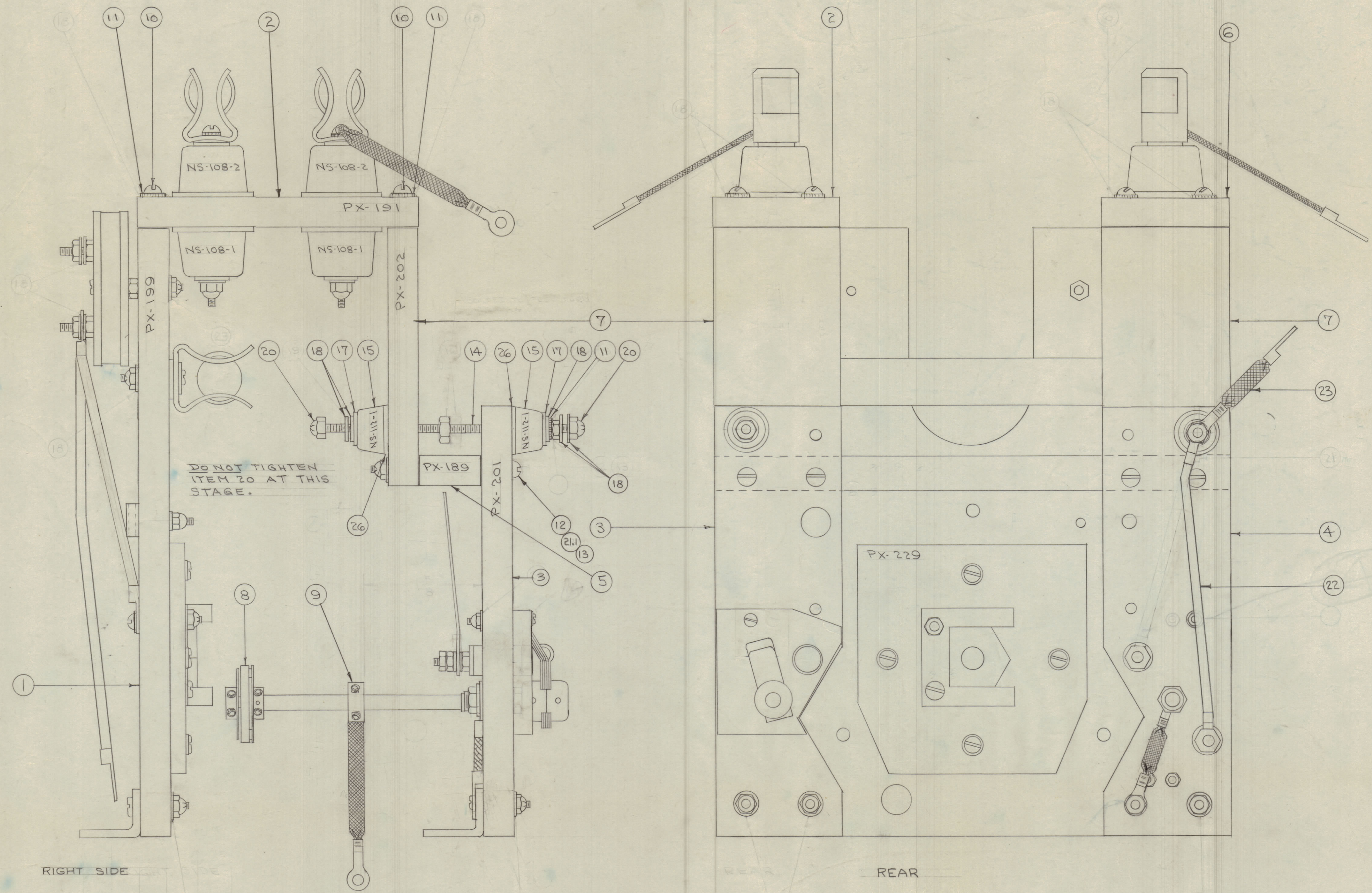


IF IT IS FOUND DESIRABLE TO CHANGE ANY TOLERANCE OR OTHER DETAIL SPECIFIED ON THIS DRAWING NOTIFY THE PURCHASER PROMPTLY.
 MAXIMUM ALLOWABLE TOLERANCES HAVE BEEN DETERMINED AND DEVIATIONS WILL BE CAUSE FOR REJECTION. REMOVE ALL BURRS AND SHARP EDGES



DO NOT TIGHTEN
ITEM 20 AT THIS
STAGE.

RIGHT SIDE

REAR

4	21	FW08HRC	WASHER, FLAT
			DELETED
4	20	SM-127-D-10-32	NUT, LOCK
	19		DELETED
14	18	FW10HRC	" , FLAT
4	17	WA-106-1	" , FIBER
6	16	NTH0328C12	NUT, HEX
4	15	NS-112-1	INSULATOR, FEED THRU
2	14	A-785	ROD, FEED THRU ASSY.
4	13	SM-127-D-8-32	NUT, LOCK
4	12	SCRS0832BC36	SCREW, MACHINE
10	11	LWE10MRC	WASHER, LOCK
8	10	SCRS1024BC16	SCREW, MACHINE
2	9	A-721	GROUND STRAP ASSY.
2	8	MC-119	COUPLING, MODIFIED
2	7	PX-202	TOP SUPPORT
1	6	A-700	LEFT COND. MOUNT ASSY.
1	5	PX-189	COND. BRACKET, FRONT
1	4	A-720	COUP. SWITCH BRACKET SUBASSY.
1	3	A-722	BAND " " " "
1	2	A-701	RIGHT COND. MOUNT ASSY.
1	1	A-719	FRONT ELEMENT ASSY.

NOTICE TO PERSONS RECEIVING THIS DRAWING

THE TECHNICAL MATERIEL CORPORATION claims proprietary right in the material disclosed hereon. This drawing is issued in confidence for engineering information only and may not be reproduced or used to manufacture anything shown hereon without permission from THE TECHNICAL MATERIEL CORPORATION to the user. This drawing is loaned for mutual assistance and is subject to recall at any time.

Property of:
THE TECHNICAL MATERIEL CORPORATION
MAMARONECK, NEW YORK

9	PICTORIAL CHG & CLARIFIED				
8	ITEM 18 WAS FINIOMEK				
7	ITEM 21.1 ADDED				
6	ITEM 21 (NTH10-4) DELE				
5	ITEM 20 WAS 3 REQ.				
4	ITEM 19 (LWE10MRC) DELE.				
3	ITEM 18 WAS 4 REQ.				
2	ITEM 16 WAS 8 REQ.				
1	ITEM 11 QUAN. WAS 2				
2	ITEM 16 WAS 1 REQ.				
1	ITEM 10 WAS SCRS1024BC16				

ISSUE	ITEM	CHANGED FROM	DATE	CN. NO.	DRAFTS	CHECKER	ENG. APP.
TOLERANCES		SCALE:					
ALL OTHERS	DEC. DIM. ±	DRILL PUNCH, COMMERCIAL STOCK					
	FRAC. DIM. ±	SIZES AND MANUFACTURERS					
	ANGULAR DIM. ±	TOLERANCES ARE NOT INCLUDED.					

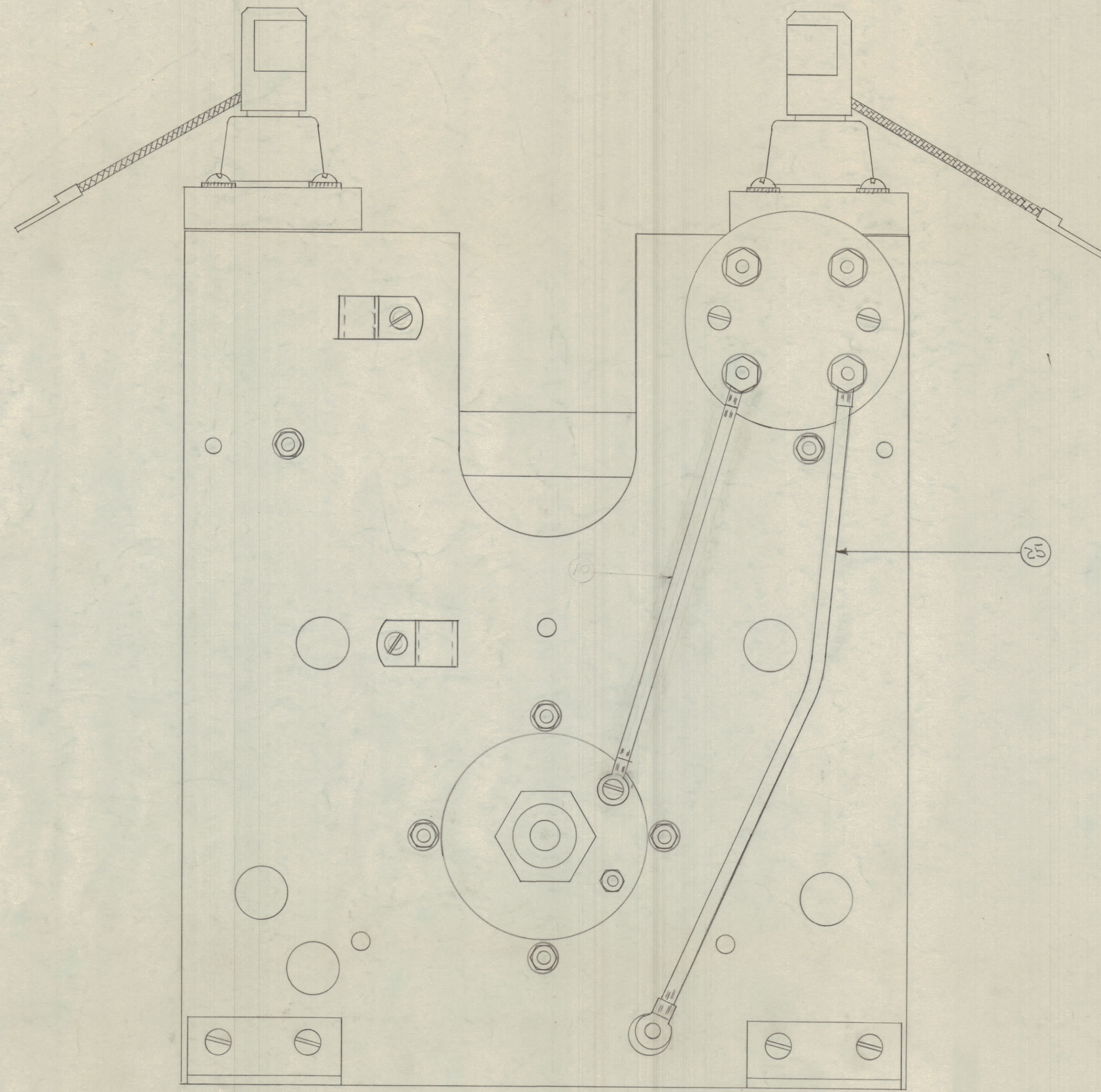
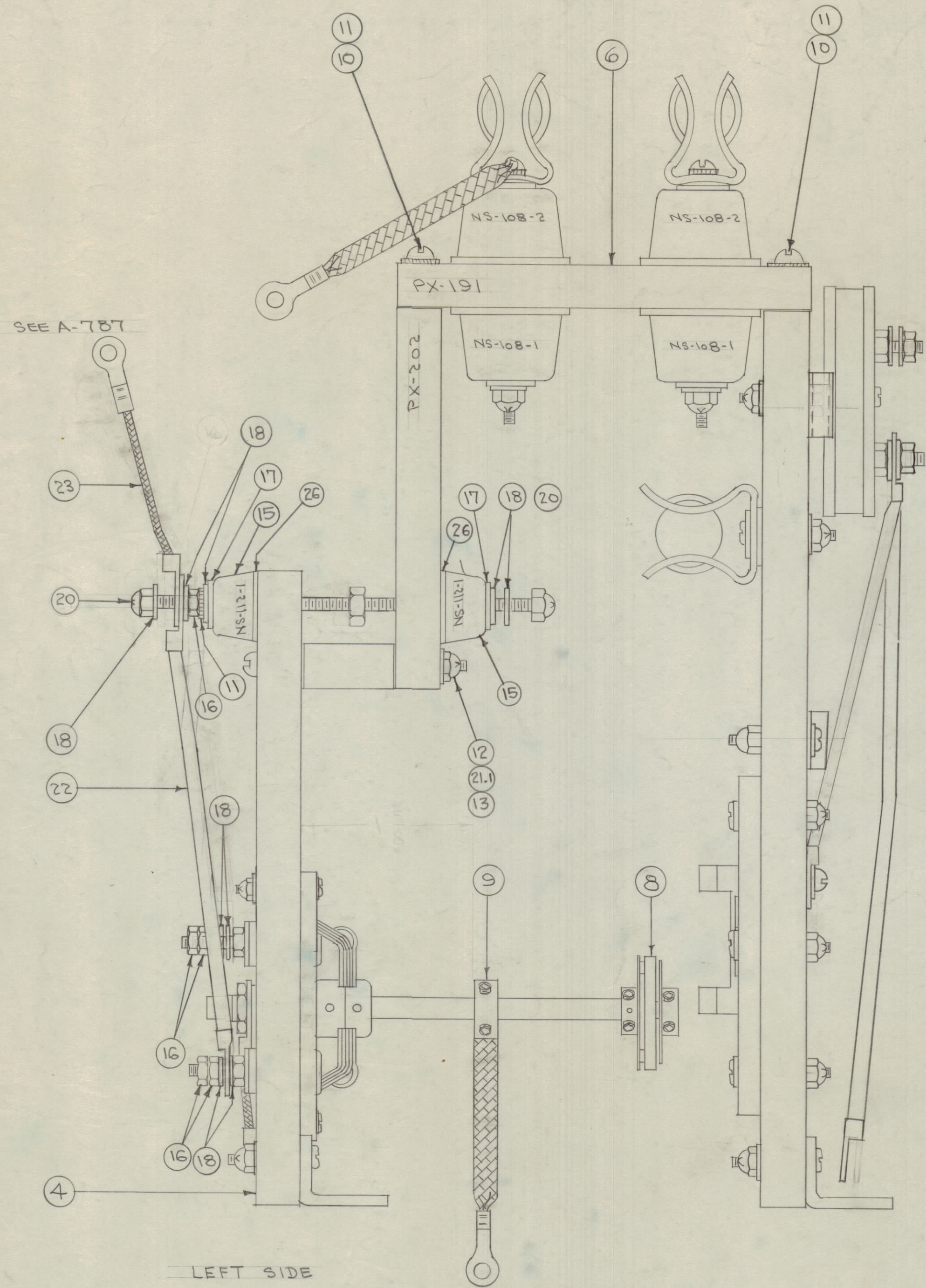
1	TAC-1	132	A-782	1-27-54
MODEL	PROJECT NO.	ASSY. NO.	DATE	
USED ON				

REG. ITEM	PART NO.	DESCRIPTION	SYMBOL
THE TECHNICAL MATERIEL CORP. MAMARONECK, NEW YORK			
STOCK SIZE			
MATERIAL WEIGHT PER PC.			
SECTION) TAC-1			
TYPE & TEMPER			
DRAWN ELEC. DES. APP. MECH. DES. APP.			
HEAT TREAT. SPEC.			
CHECKED FINAL APPROVAL			
SHEET OF 2			
FINISH & SPEC. NO.			

A-723 B

IF IT IS FOUND DESIRABLE TO CHANGE ANY TOLERANCE OR OTHER DETAIL SPECIFIED ON THIS DRAWING NOTIFY THE PURCHASER PROMPTLY.

MAXIMUM ALLOWABLE TOLERANCES HAVE BEEN DETERMINED AND DEVIATIONS WILL BE CAUSE FOR REJECTION. REMOVE ALL BURRS AND SHARP EDGES



NOTICE TO PERSONS RECEIVING THIS DRAWING

THE TECHNICAL MATERIEL CORPORATION claims proprietary right in the material disclosed herein. This drawing is issued in confidence for engineering information only and may not be reproduced or used to manufacture anything shown herein without permission from THE TECHNICAL MATERIEL CORPORATION to the user. This drawing is loaned for mutual assistance and is subject to recall at any time.

Property of:
THE TECHNICAL MATERIEL CORPORATION
MAMARONECK, NEW YORK

4	26	GA-118	WASHER
1	25	A-727	CONNECTOR ASSY.
X	24	BS-100	SOLDER, SOFT
1	23	A-746	CONNECTOR ASSY.
1	22	A-729-2	" "

THE TECHNICAL MATERIEL CORP. MAMARONECK, NEW YORK			
PHENOLIC SUB ASSEMBLY (FRONT SECTION) TAC-1			
TYPE & TEMPER	CDD. 1/25/54 <i>OM</i> <i>102</i>		
DRAWN	ELEC. DES. APP.	MECH. DES. APP.	
<i>AWB</i>	<i>QWB</i>	<i>102</i>	
HEAT TREAT. SPEC.	CHECKED	FINAL APPROVAL	
	<i>AWB</i>	<i>102</i>	
FINISH & SPEC. NO.		SHEET 2 OF 2	
		A-723 B	

1	TAC-1	132	A-782	1-27-54
SPR 278 2787	MODEL	PROJECT NO.	ASSY. NO.	DATE
USED ON				

ISSUE	ITEM	CHANGED FROM	DATE	CH. NO.	DRAFTS	CHECKER	ENG. APP.
TOLERANCES		SCALE:					
ALL	DEC. DIM. \pm	DRILL PUNCH COMMERCIAL STOCK					
OTHERS	FRAC. DIM. \pm	SIZES AND MANUFACTURERS					
	ANGULAR DIM. \pm	TOLERANCES ARE NOT INCLUDED.					

A-723 B