

IF IT IS FOUND DESIRABLE TO CHANGE ANY TOLERANCE OR OTHER DETAIL SPECIFIED ON THIS DRAWING NOTIFY THE PURCHASER PROMPTLY.

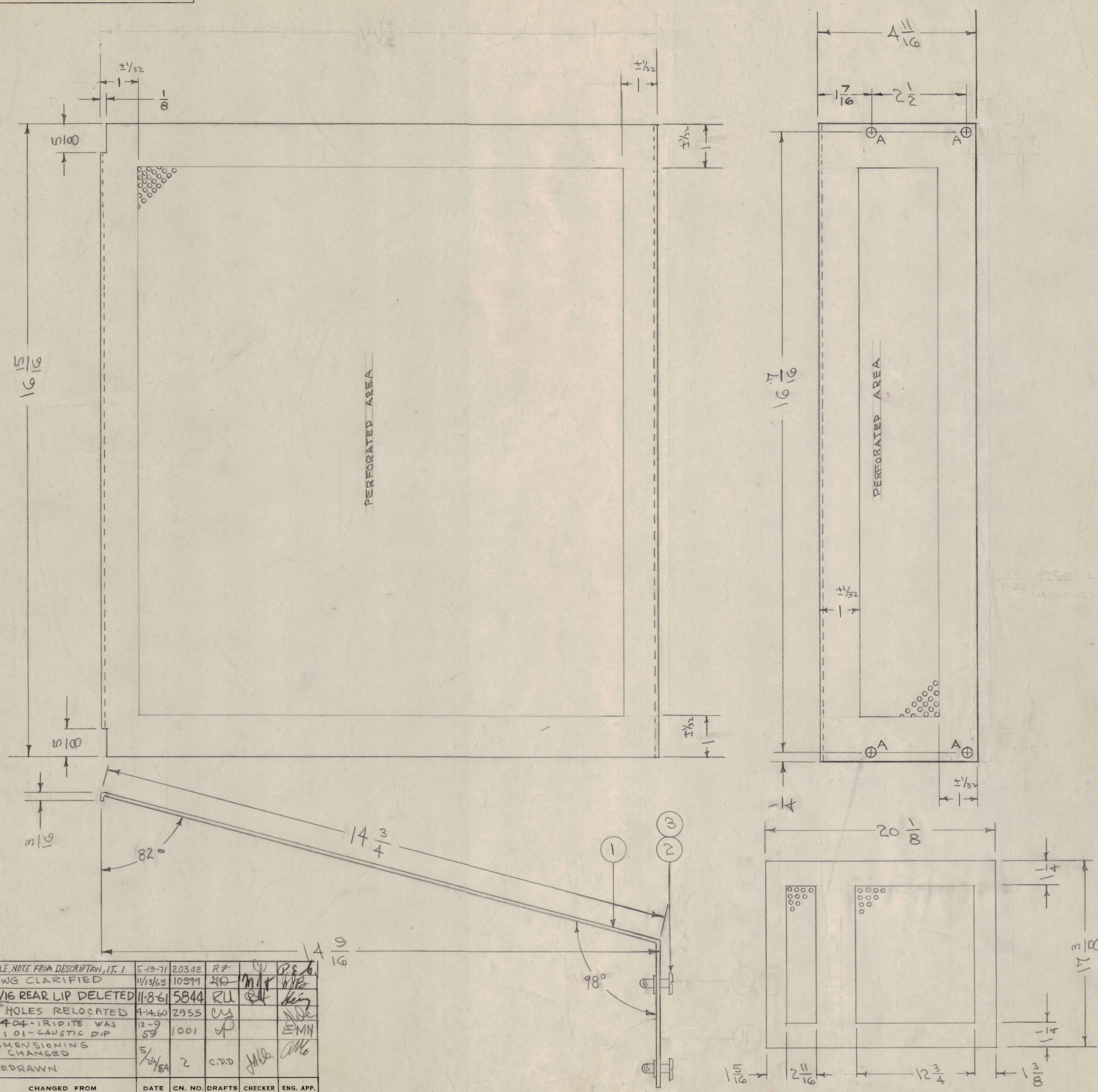
MAXIMUM ALLOWABLE TOLERANCES HAVE BEEN DETERMINED AND DEVIATIONS WILL BE CAUSE FOR REJECTION. REMOVE ALL BURRS AND SHARP EDGES

A $\frac{1}{4}$ DIA. 4 REQ.

NOTICE TO PERSONS RECEIVING THIS DRAWING

THE TECHNICAL MATERIEL CORPORATION claims proprietary right in the material disclosed hereon. This drawing is issued in confidence for engineering information only and may not be reproduced or used to manufacture anything shown hereon without permission from THE TECHNICAL MATERIEL CORPORATION to the user. This drawing is loaned for mutual assistance and is subject to recall at any time.

Property of:
THE TECHNICAL MATERIEL CORPORATION
MAMARONECK, NEW YORK



A-710 G

.042 DIA. HOLES ON 1/8" CENTERS. BORDERS AS SHOWN.

ISSUE	ITEM	CHANGED FROM	DATE	CN. NO.	DRAFTS	CHECKER	ENG. APP.
G	1	DELE. NOTE FROM DESCRIPTION, IT, 1	5-19-71	20302	RT		PEB
F	1	DWG CLARIFIED	11/13/63	10399	HD	MT	WLB
E	1	3/16 REAR LIP DELETED	11-8-61	5844	RL		
D	1	A HOLES RELOCATED	4-14-60	2955	CU		
C	1	S404-IRIDITE WAS S101-CAUSTIC DIP	12-9-59	1001	UP		EMN
B	2	DIMENSIONING CHANGED	5/24/54	2	CDD	HLB	AMB
B	1	REDRAWN					

TOLERANCES		SCALE:
ALL OTHERS	DEC. DIM. \pm FRAC. DIM. \pm ANGULAR DIM. \pm	DRILL, PUNCH, COMMERCIAL STOCK SIZES AND MANUFACTURERS TOLERANCES ARE NOT INCLUDED.

REQ. PER UNIT	MODEL	PROJECT NO.	ASS'Y. NO.	DATE
1	XFK			8-15-55

4	3	FS-169-3	RING, RETAINING	
4	2	FS-110-1	STUD, SLOTTED HEAD	
1	1	MS-228	COVER, TOP	
REQ. ITEM	PART NO.		DESCRIPTION	SYMBOL
.040 PERFORATED				
STOCK SIZE				
ALUMINUM		—	THE TECHNICAL MATERIEL CORP. MAMARONECK, NEW YORK	
MATERIAL		WEIGHT PER PC.	TOP COVER ASSY.	
5052 H32			XFK	
TYPE & TEMPER			CDD. 8/15/55	
HEAT TREAT. SPEC.			DRAWN	ELEC. DES. APP. MECH. DES. APP.
			CHECKED	FINAL APPROVAL
S404 YEL-IRIDITE			A-710 G	
FINISH & SPEC. NO.				