

IF IT IS FOUND DESIRABLE TO CHANGE ANY TOLERANCE OR OTHER DETAIL SPECIFIED ON THIS DRAWING NOTIFY THE PURCHASER PROMPTLY.

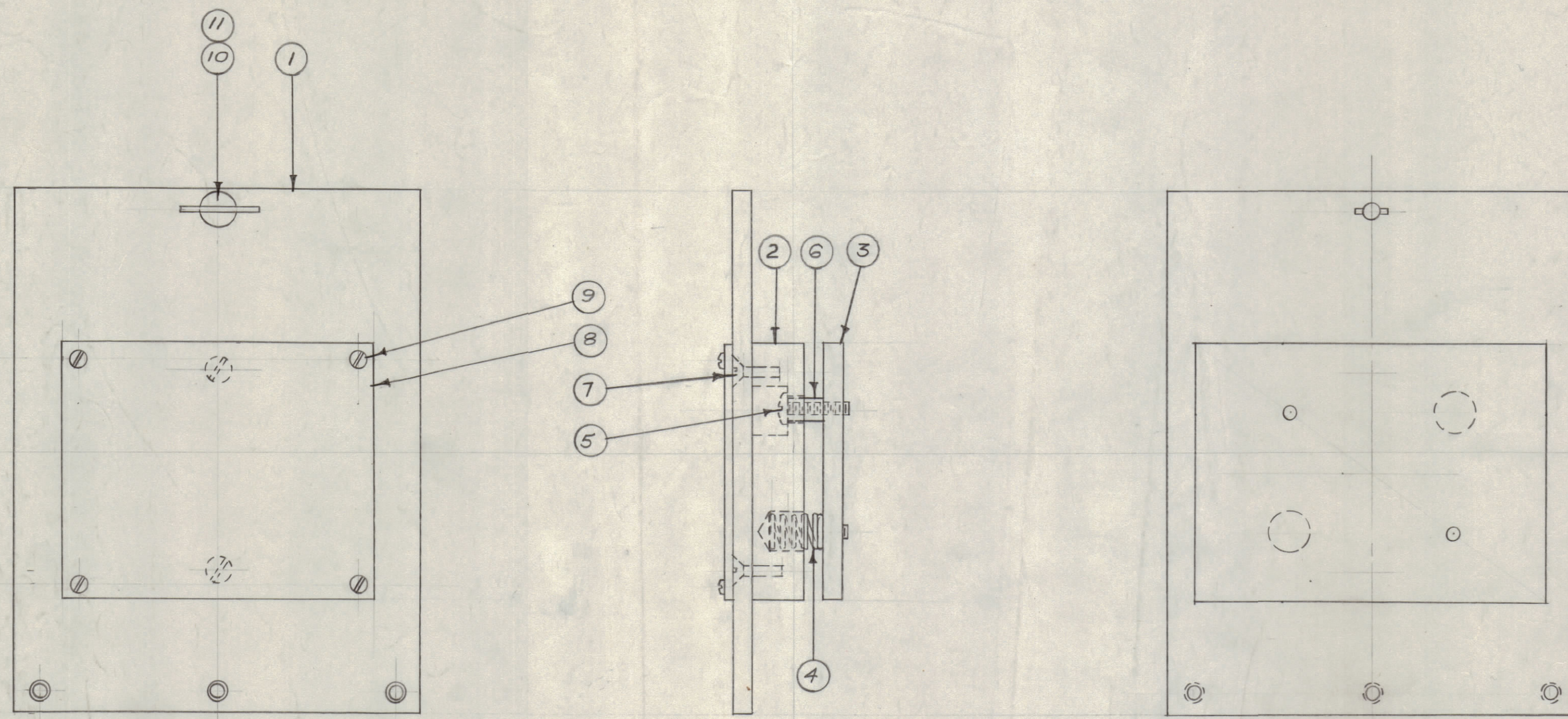
MAXIMUM ALLOWABLE TOLERANCES HAVE BEEN DETERMINED AND DEVIATIONS WILL BE CAUSE FOR REJECTION. REMOVE ALL BURRS AND SHARP EDGES

NOTICE TO PERSONS RECEIVING THIS DRAWING

THE TECHNICAL MATERIEL CORPORATION claims proprietary right in the material disclosed herein. This drawing is issued in confidence for engineering information only and may not be reproduced or used to manufacture anything shown hereon without permission from THE TECHNICAL MATERIEL CORPORATION to the user. This drawing is loaned for mutual assistance and is subject to recall at any time.

Property of:

THE TECHNICAL MATERIEL CORPORATION
MAMARONECK, NEW YORK



A-709 A

1	11	PN-105	CROSS PIN
1	10	FS-106-7	STUD, WING HEAD
4	9	SFB0440SN4	SCREW, THREAD CUTTING
1	8	NP-105	FREQ. NAMEPLATE
2	7	SCFP0632BN7	SCREW, MACH.
2	6	TE-117-7	STAND-OFF SPACER
2	5	SCBP0832BN10	SCREW, MACH.
2	4	SP-103	SPRING
1	3	MS-13B	PLATE
1	2	IM-100	INSULATOR
1	1	MS-210	FRONT DOOR

REQ. ITEM	PART NO.	DESCRIPTION	SYMBOL
		THE TECHNICAL MATERIEL CORP. MAMARONECK, NEW YORK	
STOCK SIZE			
		XTAL OVEN DOOR ASSEMBLY	
MATERIAL		XFK	
WEIGHT PER PC.			
TYPE & TEMPER		B 3-12-54	A. J. J.
DRAWN		ELEC. DES. APP.	MECH. DES. APP.
HEAT TREAT. SPEC.		CHECKED	
FINISH & SPEC. NO.		FINAL APPROVAL	

A	IT 9 WAS SC110-5 IT 7 WAS SCFS0632BC7 IT 5 WAS SCRS0832BC10	11-4-66	17193	RME	JPB	DB
ISSUE	CHANGED FROM	DATE	CN. NO.	DRAFTS	CHECKER	ENG. APP.
TOLERANCES		SCALE: 1/8"				
ALL OTHERS	DEC. DIM. ± FRAC. DIM. ± ANGULAR DIM. ±	DRILL, PUNCH, COMMERCIAL STOCK SIZES AND MANUFACTURERS TOLERANCES ARE NOT INCLUDED.				

1	XFK	A-685	3-12-54
AMT. PER UNIT	MODEL	PROJECT NO.	ASSY. NO.
USED ON			