

IF IT IS FOUND DESIRABLE TO CHANGE ANY TOLERANCE OR OTHER DETAIL SPECIFIED ON THIS DRAWING NOTIFY THE PURCHASER PROMPTLY.

A-714

MAXIMUM ALLOWABLE TOLERANCES HAVE BEEN DETERMINED AND DEVIATIONS WILL BE CAUSE FOR REJECTION. REMOVE ALL BURRS AND SHARP EDGES

REQ. PER UNIT

USED ON

MODEL

PROJECT NO.

ASS'Y. NO.

DATE

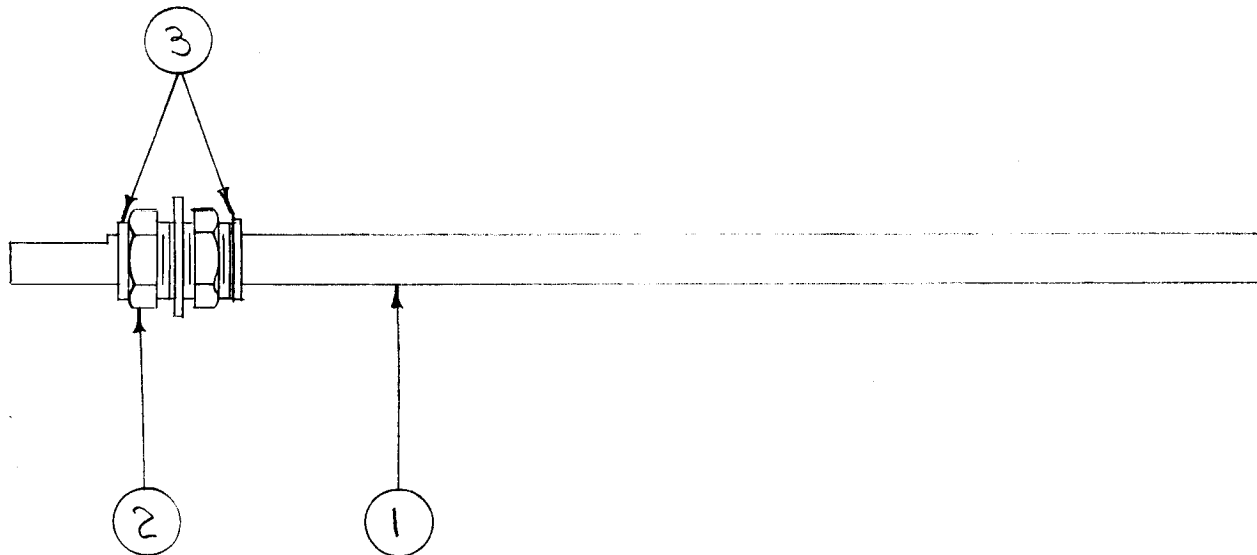
2

TAC-1

132

A-715

1-20-54



2	3	WA-113	WASHER, "C"	
1	2	BB-101	BEARING, PANEL	
1	1	PM-278	SHAFT, EXTENSION	
REQ.	ITEM	PART NO.	DESCRIPTION	SYMBOL
#			<b>THE TECHNICAL MATERIEL CORP.</b> MAMARONECK. NEW YORK	
STOCK SIZE				
#			EXT. SHAFT ASSY., COUPLING &	
MATERIAL			BAND SWITCHS. TAC-1	
WEIGHT PER PC.			C.B.D.	
TYPE & TEMPER			APB	WDC
#			DRAWN	ELEC. DES. APP.
HEAT TREAT. SPEC.			FAIDe	APB
#			CHECKED	MECH. DES. APP.
FINISH & SPEC. NO.			FINAL APPROVAL	
			A-714	

ISSUE ITEM CHANGED FROM DATE CN. NO. DRAFTS CHECKER ENG. APP.

TOLERANCES

SCALE

ALL OTHERS

DEC. DIM.  $\pm$   
 FRAC. DIM.  $\pm$   
 ANGULAR DIM.  $\pm$

DRILL, PUNCH, COMMERCIAL STOCK SIZES AND MANUFACTURERS TOLERANCES ARE NOT INCLUDED.

IF IT IS FOUND DESIRABLE TO CHANGE ANY TOLERANCE OR OTHER DETAIL SPECIFIED ON THIS DRAWING NOTIFY THE PURCHASER PROMPTLY.

A-721

MAXIMUM ALLOWABLE TOLERANCES HAVE BEEN DETERMINED AND DEVIATIONS WILL BE CAUSE FOR REJECTION. REMOVE ALL BURRS AND SHARP EDGES

REQ  
PER  
UNIT

USED ON

MODEL

PROJECT NO.

ASS'Y. NO.

DATE

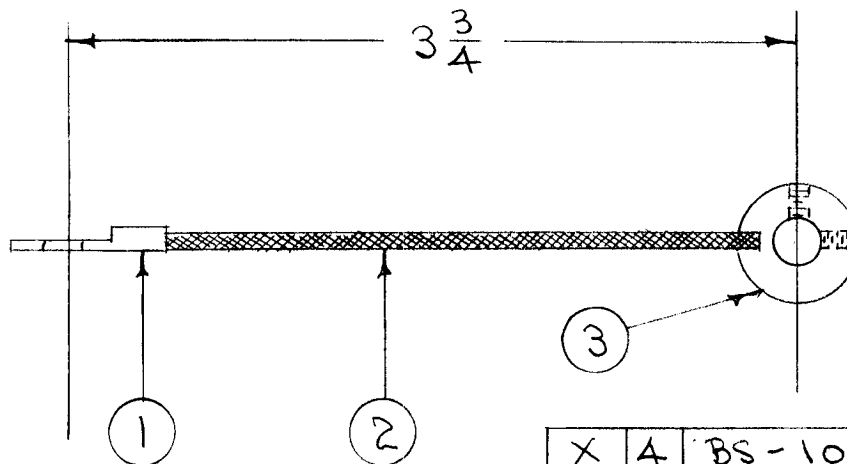
2

TAC-1

132

A-723

1-25-54



NOTE POSITION OF TAPPED HOLES AND FLAT SIDE OF LUG.

X	4	BS-100	SOLDER, SOFT	
1	3	PM-271	COLLAR, GD. STRAP	
3"	2	WL-103-4	SHIELD, FLEX.	
1	1	TE-141-3	LUG, TERMINAL	
REQ.	ITEM	PART NO.	DESCRIPTION	SYMBOL
#			THE TECHNICAL MATERIEL CORP. MAMARONECK, NEW YORK	
STOCK SIZE				
#		#	GROUND STRAP ASSY, SHAFT	
MATERIAL		WEIGHT PER PC.	TAC-1	
#			C.D.D. <i>AKB</i>	
TYPE & TEMPER			DRAWN	MECH. DES. APP. <i>WOC</i>
#			ELEC. DES. APP. <i>app</i>	FINAL APPROVAL <i>WOC</i>
HEAT TREAT. SPEC.			CHECKED <i>JADe</i>	
SILVER PLATE .0003			A-721	
FINISH & SPEC. NO.				

ISSUE ITEM CHANGED FROM DATE CN. NO. DRAFTS CHECKER ENG. APP.

TOLERANCES

SCALE #

ALL  
OTHERS

DEC. DIM.  $\pm$   
FRAC. DIM.  $\pm 1/16$   
ANGULAR DIM.  $\pm$

DRILL, PUNCH, COMMERCIAL STOCK  
SIZES AND MANUFACTURERS  
TOLERANCES ARE NOT INCLUDED.

IF IT IS FOUND DESIRABLE TO CHANGE ANY TOLERANCE OR OTHER DETAIL SPECIFIED ON THIS DRAWING NOTIFY THE PURCHASER PROMPTLY.

A-726 A

MAXIMUM ALLOWABLE TOLERANCES HAVE BEEN DETERMINED AND DEVIATIONS WILL BE CAUSE FOR REJECTION. REMOVE ALL BURRS AND SHARP EDGES

REQ PER UNIT

USED ON

MODEL

PROJECT NO.

ASS'Y. NO.

DATE

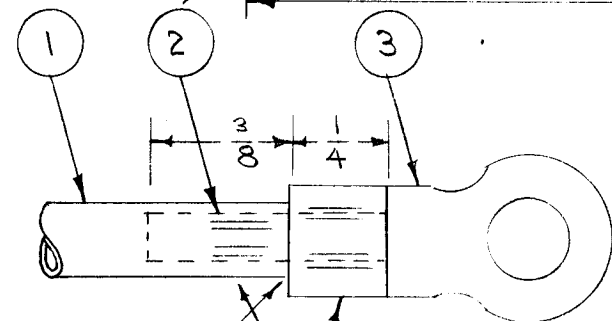
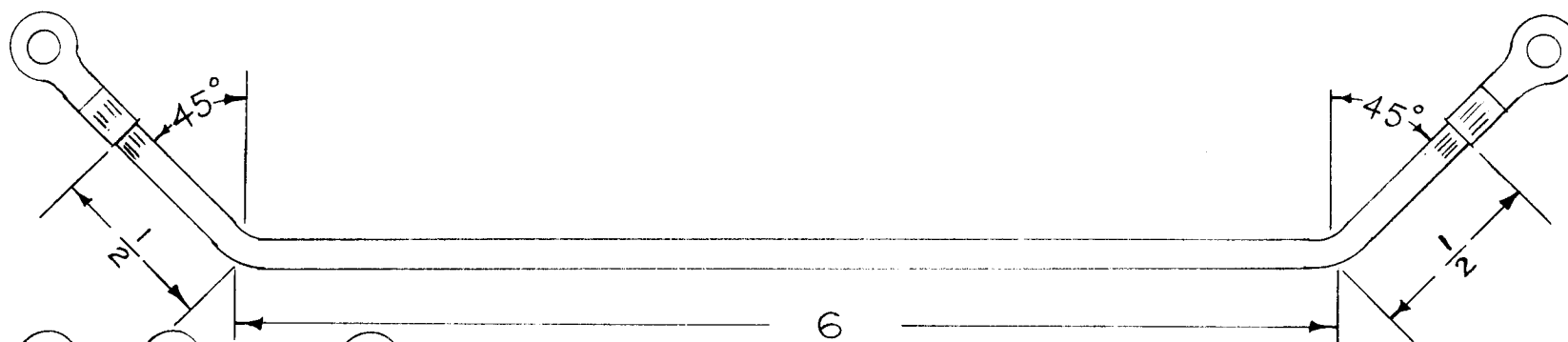
1

TAC-1

132

A-782

4/22/53



SOLDER  
CRIMP LUG AND TUBING

X	4	BS-100	SOLDER, SOFT	
2	3	TE-141-3	LUG, TERMINAL	
1/4"	2	WL-100-1	WIRE, BUSS BAR	
1	1	FP-120	FEED THRU CONNECTOR	NO DWG.

REQ.	ITEM	PART NO.	DESCRIPTION	SYMBOL
		3/16" O.D. TUBING	THE TECHNICAL MATERIEL CORP.	
		STOCK SIZE	MAMARONECK. NEW YORK	
		COPPER	FEED THRU CONNECTOR ASSY.	
		MATERIAL	TAC-1	
		WEIGHT PER PC.		
		SOFT DRAWN		
		TYPE & TEMPER	C.D.D. <i>APP</i> <i>WJZ</i>	
			DRAWN <i>APP</i> ELEC. DES. APP. MECH. DES. APP. <i>WJZ</i>	
		HEAT TREAT. SPEC.	CHECKED <i>APP</i> FINAL APPROVAL <i>WJZ</i>	
		SILVER PLATE .0003		
		FINISH & SPEC. NO.	A-726 A	

A	1	DIMENSIONS ADDED to FP-120	11-1-54	1	LG	<i>APP</i>	<i>WJZ</i>
ISSUE	ITEM	CHANGED FROM	DATE	CN. NO.	DRAFTS	CHECKER	ENG. APP.

TOLERANCES			SCALE <i>11</i>				
ALL OTHERS	DEC. DIM. ±		DRILL, PUNCH, COMMERCIAL STOCK SIZES AND MANUFACTURERS TOLERANCES ARE NOT INCLUDED.				
	FRAC. DIM. ± 1/16						
	ANGULAR DIM. ±						

IF IT IS FOUND DESIRABLE TO CHANGE ANY TOLERANCE OR OTHER DETAIL SPECIFIED ON THIS DRAWING NOTIFY THE PURCHASER PROMPTLY.

A-730 A

MAXIMUM ALLOWABLE TOLERANCES HAVE BEEN DETERMINED AND DEVIATIONS WILL BE CAUSE FOR REJECTION. REMOVE ALL BURRS AND SHARP EDGES

REQ. PER UNIT

USED ON

MODEL

PROJECT NO.

ASS'Y. NO.

DATE

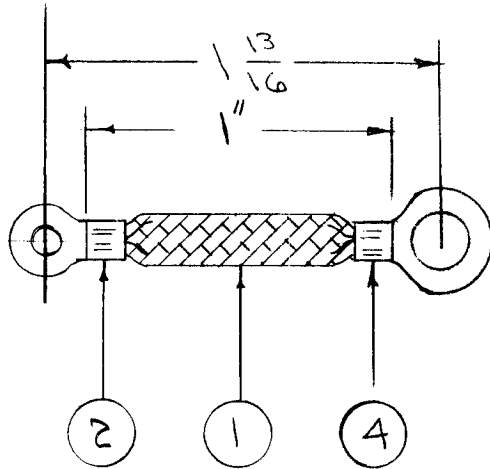
2

TAC-1

132

A-720  
A-722

1-14-54



1	4	TE-141-G	LUG, TERMINAL	
X	3	BS-100	SOLDER, SOFT	
1	2	TE-141-3	LUG, TERMINAL	
1"	1	WL-103-A	SHIELD, FLEXIBLE	
REQ.	ITEM	PART NO.	DESCRIPTION	SYMBOL
//			THE TECHNICAL MATERIEL CORP. MAMARONECK. NEW YORK	
STOCK SIZE				
//			CONNECTOR ASSY., SWITCH TO	
MATERIAL			GROUND TAC-1	
WEIGHT PER PC.				
//			C.D.D.	
TYPE & TEMPER			ARB WOE	
//			DRAWN	
HEAT TREAT. SPEC.			ARB WOE	
//			CHECKED	
FINISH & SPEC. NO.			FINAL APPROVAL	
			A-730 A	

A	1	1" WAS 1 3/16"	3/16	1	CDD.	JAW	WOE
ISSUE	ITEM	CHANGED FROM	DATE	CN. NO.	DRAFTS	CHECKER	ENG. APP.

TOLERANCES

SCALE

ALL OTHERS

DEC. DIM. ±  
FRAC. DIM. ±  
ANGULAR DIM. ±

DRILL, PUNCH, COMMERCIAL STOCK SIZES AND MANUFACTURERS TOLERANCES ARE NOT INCLUDED.

IF IT IS FOUND DESIRABLE TO CHANGE ANY TOLERANCE OR OTHER DETAIL SPECIFIED ON THIS DRAWING NOTIFY THE PURCHASER PROMPTLY.

A-731

MAXIMUM ALLOWABLE TOLERANCES HAVE BEEN DETERMINED AND DEVIATIONS WILL BE CAUSE FOR REJECTION. REMOVE ALL BURRS AND SHARP EDGES

REQ. PER UNIT

USED ON

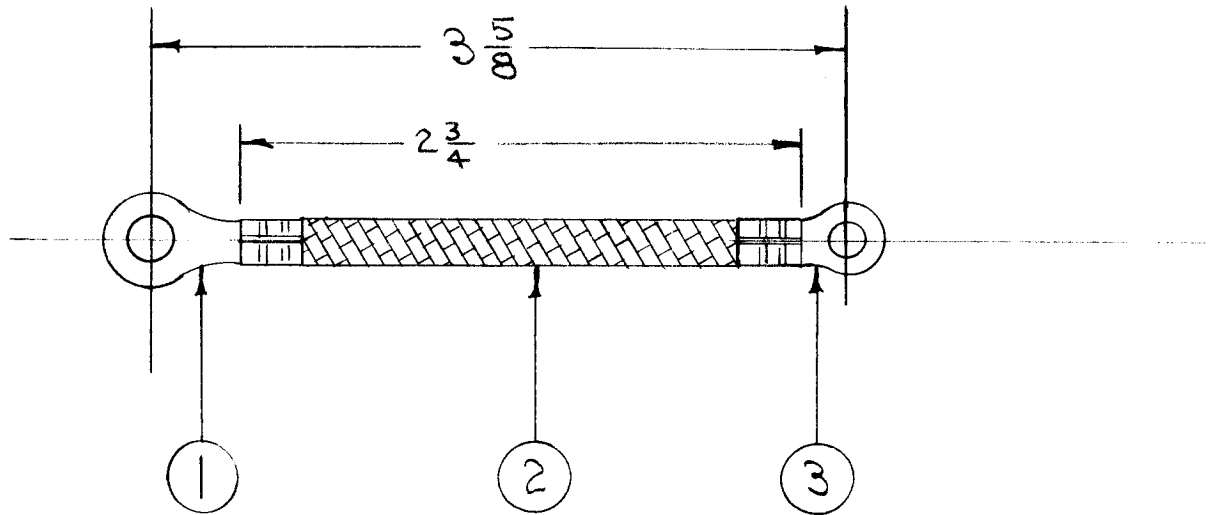
2

MODEL  
TAC-1

PROJECT NO.  
132

ASS'Y. NO.  
A-700  
A-701

DATE  
12-31-53



X	4	BS-100	SOLDER, SOFT	
1	3	TE-141-3	TERMINAL	
2 3/4"	2	WL-103-4	SHIELD, FLEXIBLE	
1	1	TE-141-4	TERMINAL	
REQ.	ITEM	PART NO.	DESCRIPTION	SYMBOL
//			THE TECHNICAL MATERIEL CORP. MAMARONECK. NEW YORK	
STOCK SIZE				
//		//	STRAP, FUSEHOLDER	
MATERIAL		WEIGHT PER PC.	TAC-1	
//				
TYPE & TEMPER			C.D.D.	
//			DRAWN	
HEAT TREAT. SPEC.			ELEC. DES. APP.	
//			CHECKED	
FINISH & SPEC. NO.			FINAL APPROVAL	
			A-731	

ISSUE ITEM CHANGED FROM DATE CN. NO. DRAFTS CHECKER ENG. APP.

TOLERANCES

SCALE //

ALL OTHERS

DEC. DIM. ±  
FRAC. DIM. ± 1/16  
ANGULAR DIM. ±

DRILL, PUNCH, COMMERCIAL STOCK SIZES AND MANUFACTURERS TOLERANCES ARE NOT INCLUDED.

IF IT IS FOUND DESIRABLE TO CHANGE ANY TOLERANCE OR OTHER DETAIL SPECIFIED ON THIS DRAWING NOTIFY THE PURCHASER PROMPTLY.

A-732 D

MAXIMUM ALLOWABLE TOLERANCES HAVE BEEN DETERMINED AND DEVIATIONS WILL BE CAUSE FOR REJECTION. REMOVE ALL BURRS AND SHARP EDGES

REQ. PER UNIT

USED ON

MODEL

PROJECT NO.

ASS'Y. NO.

DATE

2

TAC-1

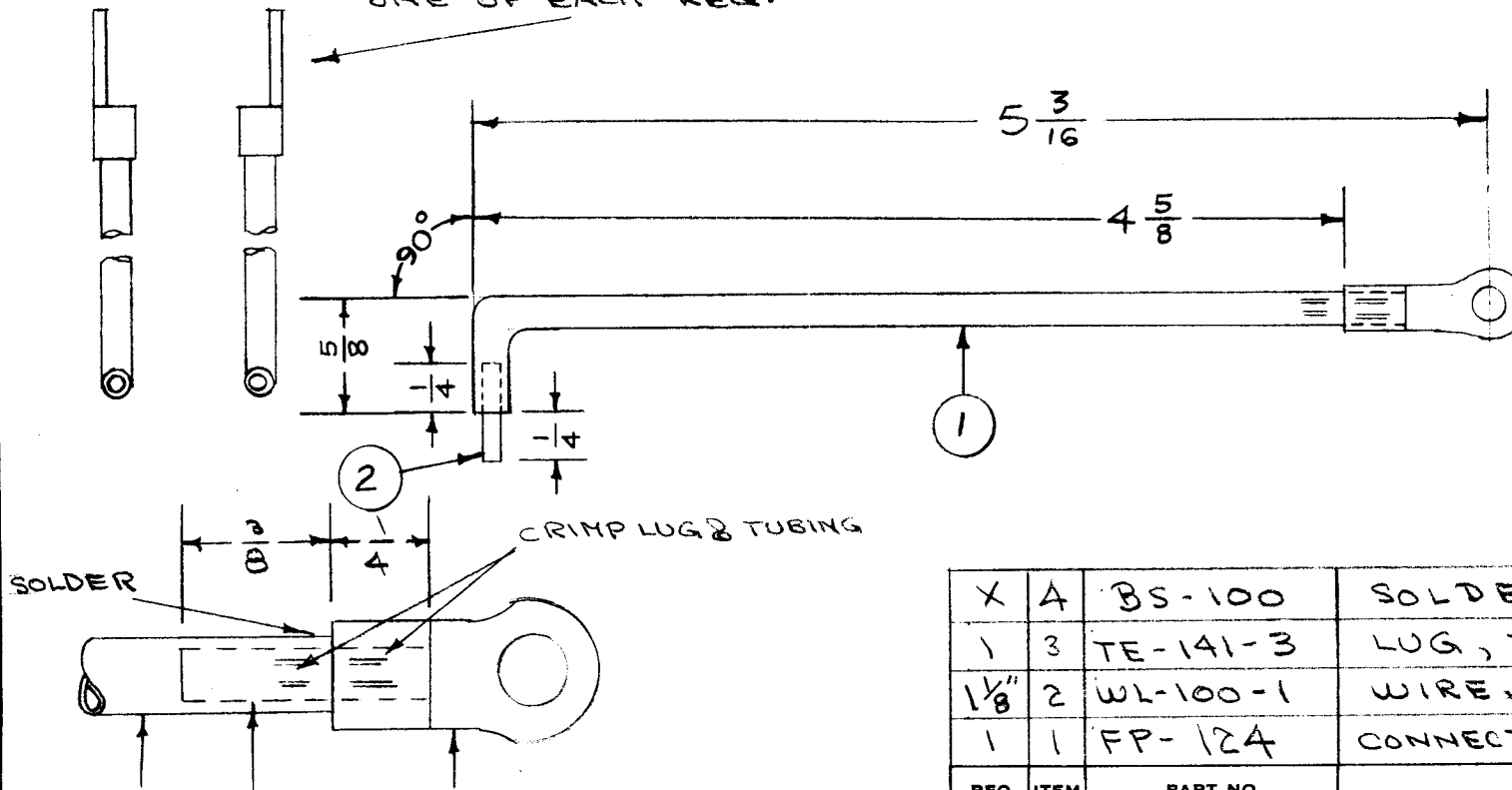
132

A-674

1-18-54

LUG DETAIL

NOTE POSITION OF LUGS ONE OF EACH REQ.



REQ.	ITEM	PART NO.	DESCRIPTION	SYMBOL
X	A	BS-100	SOLDER, SOFT	
1	3	TE-141-3	LUG, TERMINAL	
1 1/8"	2	WL-100-1	WIRE, BUSS BAR	
1	1	FP-124	CONNECTOR (COIL TO COIL)	N.D.

ISSUE	ITEM	CHANGED FROM	DATE	CN. NO.	DRAFTS	CHECKER	ENG. APP.
D	3	ITEM 3 WAS TE-141-1	4/9/57	4	16	JAE	AK
	2	5 3/16 DIM. ADDED					
	1	4 5/8 REF. CHG'D.					
C	2	ITEM 1 DIM. ADDED	10/29/56	3	16	JAE	AK
	1	1/2" of item 2 added.					
B	1	ITEM 3 WAS TE-141-3	11/21/54	2	16	JAE	AK
A	1	LUG DETAIL ADDED	9/14/54	1	16	JAE	AK

THE TECHNICAL MATERIEL CORP. MAMARONECK, NEW YORK			
CONNECTOR ASSY. COIL TO COIL			
TAC-1			
C.D.D.	ELEC. DES. APP.	MECH. DES. APP.	
JAE	AK	WJE	
CHECKED	FINAL APPROVAL		
P. R.	AK		
FINISH & SPEC. NO.			
SILVER PLATE .0003			A-732 D

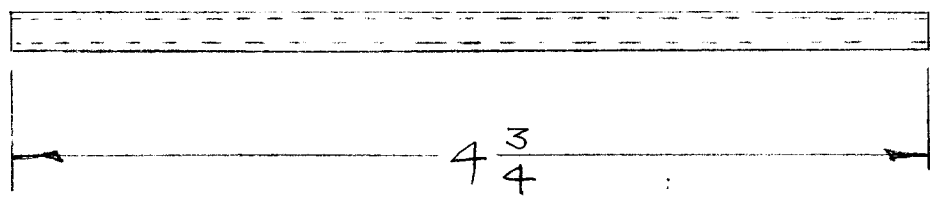
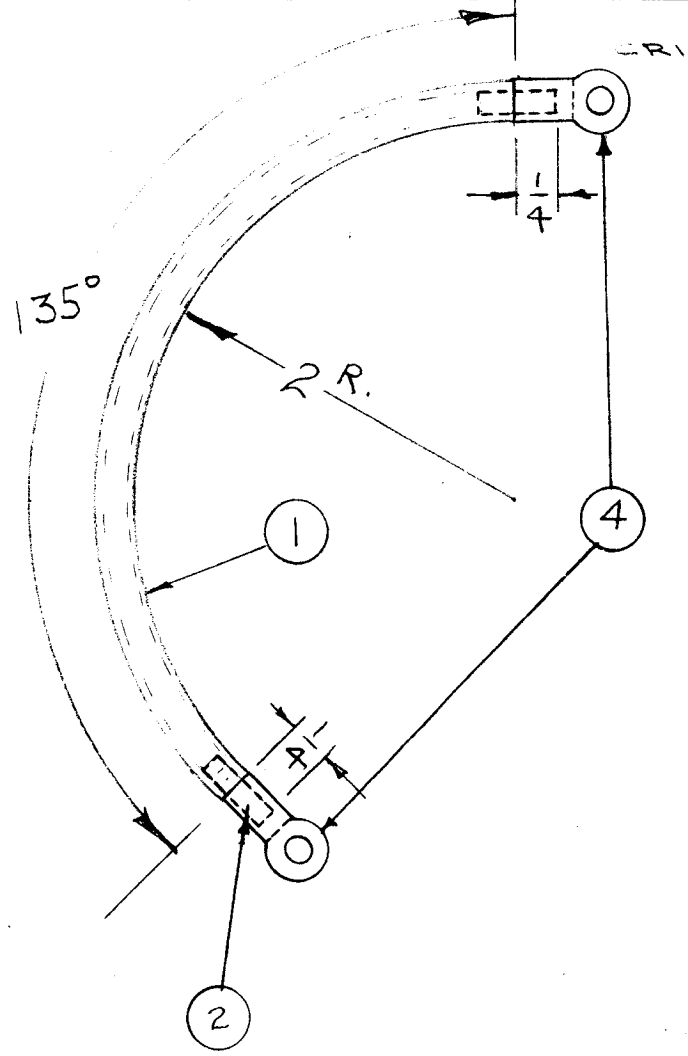
TOLERANCES		SCALE
ALL OTHERS	DEC. DIM. ± FRAC. DIM. ± 1/64 ANGULAR DIM. ±	DRILL, PUNCH, COMMERCIAL STOCK SIZES AND MANUFACTURERS TOLERANCES ARE NOT INCLUDED.

IF IT IS FOUND DESIRABLE TO CHANGE ANY TOLERANCE OR OTHER DETAIL SPECIFIED ON THIS DRAWING NOTIFY THE PURCHASER PROMPTLY.

A-733 A

MAXIMUM ALLOWABLE TOLERANCES HAVE BEEN DETERMINED AND DEVIATIONS WILL BE CAUSE FOR REJECTION. REMOVE ALL BURRS AND SHARP EDGES

REQ PER UNIT	USED ON			
	MODEL	PROJECT NO.	ASS'Y. NO.	DATE
1	TAC-1	132	A-782	1-28-54



2	4	TE-141-3	LUG, TERMINAL	
X	3	BS-100	SOLDER, SOFT	
1/4	2	WL-100-1	BUSS BAR	
4 3/4	1	FP-126	CONNECTOR, OUTPUT	NO DWG
REQ.	ITEM	PART NO.	DESCRIPTION	SYMBOL
3/16 DIA			THE TECHNICAL MATERIEL CORP.	
STOCK SIZE			MAMARONECK, NEW YORK	
COPPER			CONNECTOR, OUTPUT	
MATERIAL			WEIGHT PER PC.	
SOFT DRAWN			MODEL TAC-1	
TYPE & TEMPER			WOL	WOL
			DRAWN	ELEC. DES. APP.
			WOL	WOL
			CHECKED	FINAL APPROVAL
HEAT TREAT. SPEC.				
SILVER PLATE .0003				
FINISH & SPEC. NO.				
			A-733 A	

A	1	ITEM 4 ADDED	10/29/54	1	16	WOL	WOL
ISSUE	ITEM	CHANGED FROM	DATE	CN. NO.	DRAFTS	CHECKER	ENG. APP.
TOLERANCES			SCALE				
ALL OTHERS	DEC. DIM. ±	FRAC. DIM. ±	DRILL, PUNCH, COMMERCIAL STOCK SIZES AND MANUFACTURERS TOLERANCES ARE NOT INCLUDED.				
	AN ULAR DIM. ±	1/64					
		20					

IF IT IS FOUND DESIRABLE TO CHANGE ANY TOLERANCE OR OTHER DETAIL SPECIFIED ON THIS DRAWING NOTIFY THE PURCHASER PROMPTLY.

A-734 B

MAXIMUM ALLOWABLE TOLERANCES HAVE BEEN DETERMINED AND DEVIATIONS WILL BE CAUSE FOR REJECTION. REMOVE ALL BURRS AND SHARP EDGES

REQ PER UNIT	USED ON			
	MODEL	PROJECT NO.	ASS'Y. NO.	DATE
1	TAC-1	132	A-787	1-28-34

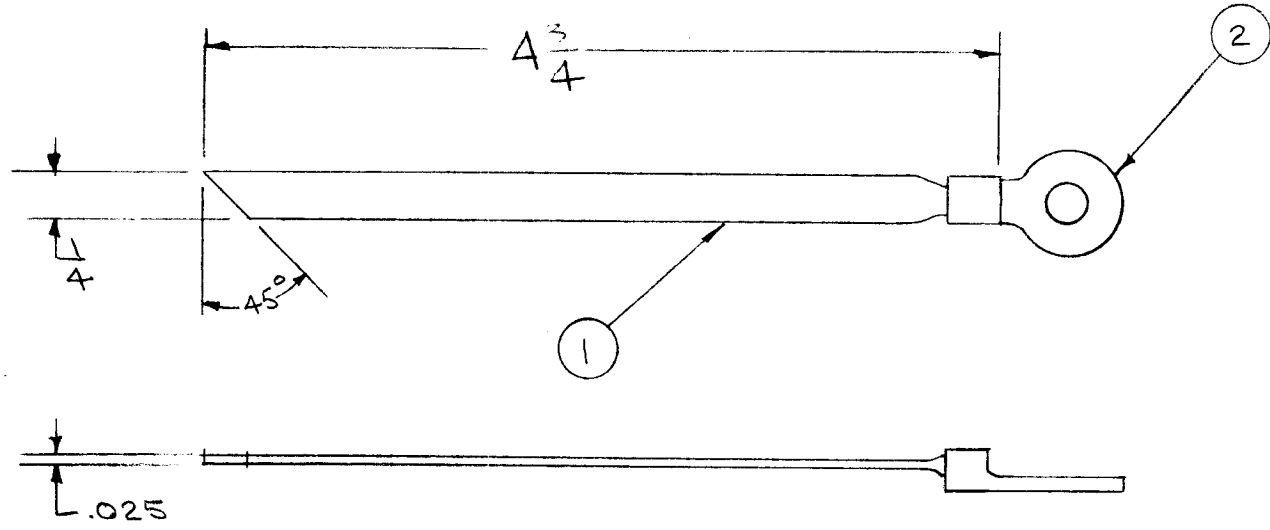


PLATE ONLY MS-516 -(BEFORE ASSY)

X	3	BS-100	SOLDER, SOFT	
1	2	TE-141-3	LUG, TERMINAL	
4 3/4"	1	MS-516	BACK CONDENSER STRAP	N.D
REQ.	ITEM	PART NO.	DESCRIPTION	SYMBOL
.025 X 1/4			THE TECHNICAL MATERIEL CORP.	
STOCK SIZE			MAMARONECK. NEW YORK	
COPPER		—	CONDENSER STRAP, BACK	
MATERIAL		WEIGHT PER PC.	MODEL TAC-1	
COMMERCIAL SOFT				
TYPE & TEMPER			<i>JAD</i>	<i>ARB</i>
—			DRAWN	ELEC. DES. APP.
HEAT TREAT. SPEC.			<i>203</i>	<i>ARB</i>
SILVER PLATE			CHECKED	FINAL APPROVAL
.0003				
FINISH & SPEC. NO.				A-734 B

B	4	PLATING ADDED	4/24/37	2	46	<i>JAD</i>	<i>ARB</i>
	3	MAT WAS NICKEL SILVER					
	2	ITEM 2 WAS TE-141-4					
A	1	4 3/4 WAS 4 1/4		1	C.D.	<i>JAD</i>	<i>ARB</i>
	1	4 1/4 WAS 4/8					
ISSUE	ITEM	CHANGED FROM	DATE	CN. NO.	DRAFTS	CHECKER	ENG. APP.

TOLERANCES		SCALE
ALL OTHERS	DEC. DIM. ± FRAC. DIM. ± ANGULAR DIM. ±	DRILL, PUNCH, COMMERCIAL STOCK SIZES AND MANUFACTURERS TOLERANCES ARE NOT INCLUDED.



IF IT IS FOUND DESIRABLE TO CHANGE ANY TOLERANCE OR OTHER DETAIL SPECIFIED ON THIS DRAWING NOTIFY THE PURCHASER PROMPTLY.

MAXIMUM ALLOWABLE TOLERANCES HAVE BEEN DETERMINED AND DEVIATIONS WILL BE CAUSE FOR REJECTION. REMOVE ALL BURRS AND SHARP EDGES

A-735 B

REQ  
PER  
UNIT

USED ON

MODEL

PROJECT NO.

ASS'Y. NO.

DATE

1

TAC-1

132

A-787

1-28-54

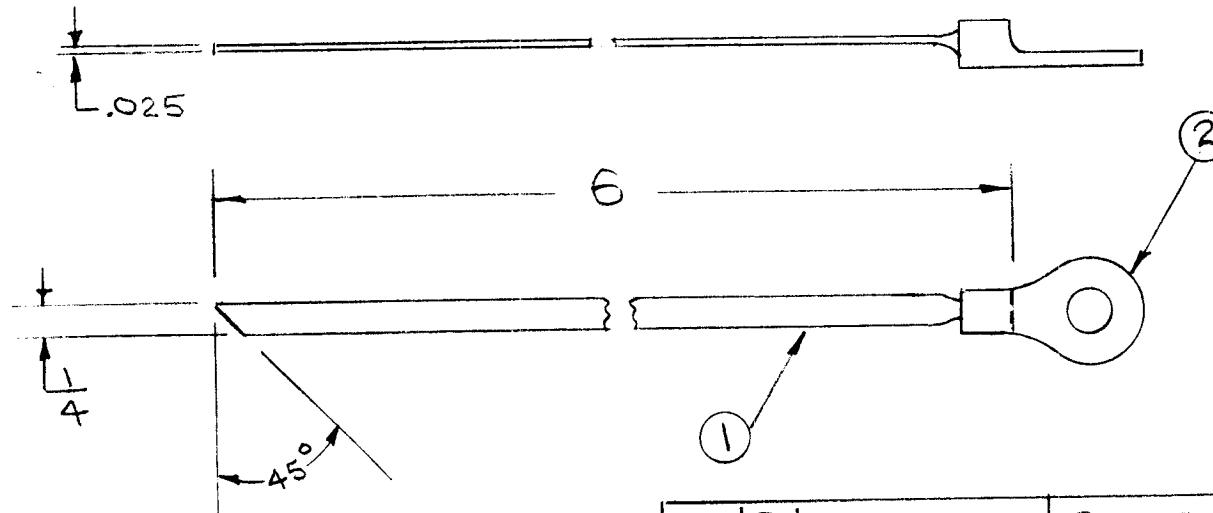


PLATE ONLY MS-517 (BEFORE ASS'Y.)

REQ.	ITEM	PART NO.	DESCRIPTION	SYMBOL
X	3	BS-100	SOFT SOLDER	
1	2	TE-141-3	LUG, TERMINAL	
6"	1	MS-517	FEED THRU STRAP	N.D.
.025 x 1/4			THE TECHNICAL MATERIEL CORP.	
STOCK SIZE			MAMARONECK, NEW YORK	
COPPER		#	FEED THRU, STRAP	
MATERIAL			MODEL TAC-1	
COMMERICAL SOFT				
TYPE & TEMPER			J.A.D.	W.D.
			ARB	W.D.
HEAT TREAT. SPEC.			FINAL APPROVAL	
SILVER PLATE				
.0003				
FINISH & SPEC. NO.				

ISSUE	ITEM	CHANGED FROM	DATE	CN. NO.	DRAFTS	CHECKER	ENG. APP.
B	3	FINISH ADDED					
	2	MAT. WAS NICKEL SILVER	4/27/57	2	KG	JAD	
	1	G WAS 4 1/4					
A	1	AYA WAS 4/8		1	CDD	JAD	

TOLERANCES		SCALE
ALL OTHERS	DEC. DIM. ± FRAC. DIM. ± ANGULAR DIM. ±	DRILL, PUNCH, COMMERCIAL STOCK SIZES AND MANUFACTURERS TOLERANCES ARE NOT INCLUDED.

DRAWN: J.A.D.  
ELEC. DES. APP.: ARB  
MECH. DES. APP.: W.D.  
CHECKED: P.B.  
FINAL APPROVAL: ARB

A-735 B

IF IT IS FOUND DESIRABLE TO CHANGE ANY TOLERANCE OR OTHER DETAIL SPECIFIED ON THIS DRAWING NOTIFY THE PURCHASER PROMPTLY.

A-746 A

MAXIMUM ALLOWABLE TOLERANCES HAVE BEEN DETERMINED AND DEVIATIONS WILL BE CAUSE FOR REJECTION. REMOVE ALL BURRS AND SHARP EDGES

REQ PER UNIT

USED ON

1

MODEL

TAC-1

PROJECT NO.

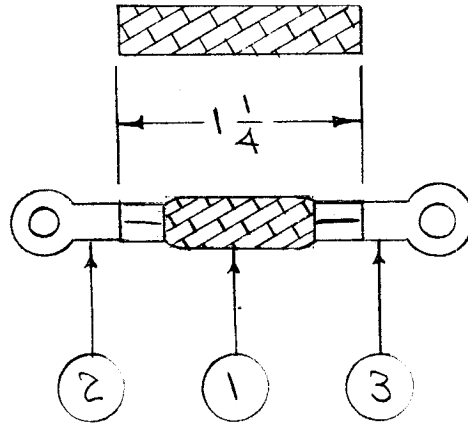
132

ASS'Y. NO.

A-723

DATE

1-25-54



X	4	BS-100	SOLDER, SOFT	
1	3	TE-141-3	TERMINAL	
1	2	TE-141-1	"	
1/4"	1	WL-103-4	SHIELD, FLEX.	
REQ.	ITEM	PART NO.	DESCRIPTION	SYMBOL
— # —			THE TECHNICAL MATERIEL CORP. MAMARONECK. NEW YORK	
STOCK SIZE				
— # —			CONNECTOR ASSY., CONDENSER	
MATERIAL			TO FEED THRU TAC-1	
WEIGHT PER PC.			C.D.D	
TYPE & TEMPER			ARB	WDC
DRAWN			ELEC. DES. APP.	MECH. DES. APP.
HEAT TREAT. SPEC.			JADe	ARB
FINISH & SPEC. NO.			CHECKED	FINAL APPROVAL
			A-746 A	

A	1	1 REQ. WAS 2	10/18/54	1	ARB	WDC	WDC
ISSUE	ITEM	CHANGED FROM	DATE	CN. NO.	DRAFTS	CHECKER	ENG. APP.

TOLERANCES		SCALE	#
ALL OTHERS	DEC. DIM. ± FRAC. DIM. ± 1/64 ANGULAR DIM. ±	DRILL, PUNCH, COMMERCIAL STOCK SIZES AND MANUFACTURERS TOLERANCES ARE NOT INCLUDED.	

IF IT IS FOUND DESIRABLE TO CHANGE ANY TOLERANCE OR OTHER DETAIL SPECIFIED ON THIS DRAWING NOTIFY THE PURCHASER PROMPTLY.

A-784

MAXIMUM ALLOWABLE TOLERANCES HAVE BEEN DETERMINED AND DEVIATIONS WILL BE CAUSE FOR REJECTION. REMOVE ALL BURRS AND SHARP EDGES

REQ. PER UNIT

USED ON

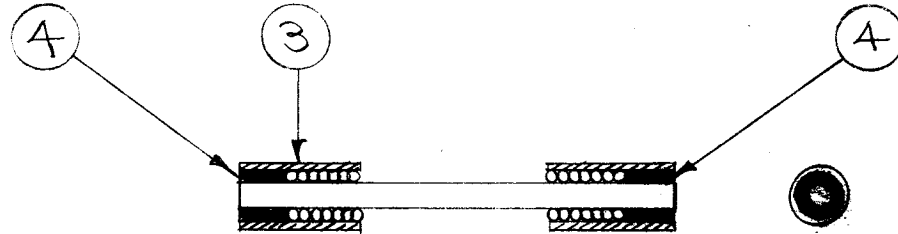
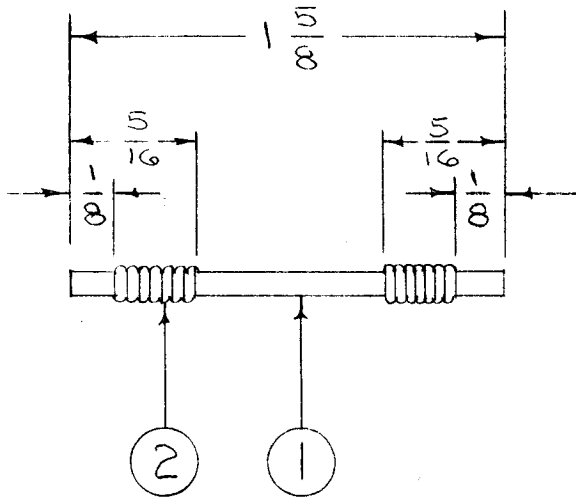
1

VOX

101

A-524

DATE



STEP 2 - SLIP ITEM 3 OVER ENDS AS SHOWN. FILL ENDS WITH ITEM 4.

STEP 1 - WRAP APPROX. SEVEN TURNS OF ITEM 2 AROUND ITEM 1 TO CONFORM TO ABOVE DIMENSIONS.

REQ.	ITEM	PART NO.	DESCRIPTION	SYMBOL
X	A	BS-100	SOLDER	
2	3	CU-101-1	FERRULE	
X	2	WL-100-17	WIRE, #18	
1 5/8"	1	MC-109	SHAFT, FLEXIBLE	
THE TECHNICAL MATERIAL CORP. MAMARONECK, NEW YORK				
FLEXIBLE SHAFT ASSY.				
VOX				
TYPE & TEMPER		C.I.D. 6-1-54	ATT	WJ
HEAT TREAT. SPEC.		DRAWN	ELEC. DES. APP.	MECH. DES. APP.
FINISH & SPEC. NO.		JAD 6-1-54	ATT	WJ
CHECKED			FINAL APPROVAL	
			A-784	

ISSUE	ITEM	CHANGED FROM	DATE	CN. NO.	DRAFTS	CHECKER	ENG. APP.
TOLERANCES			SCALE				
ALL OTHERS			DRILL, PUNCH, COMMERCIAL STOCK SIZES AND MANUFACTURERS TOLERANCES ARE NOT INCLUDED.				
DEC. DIM. ±							
FRAC. DIM. ± 1/32							
ANGULAR DIM. ±							

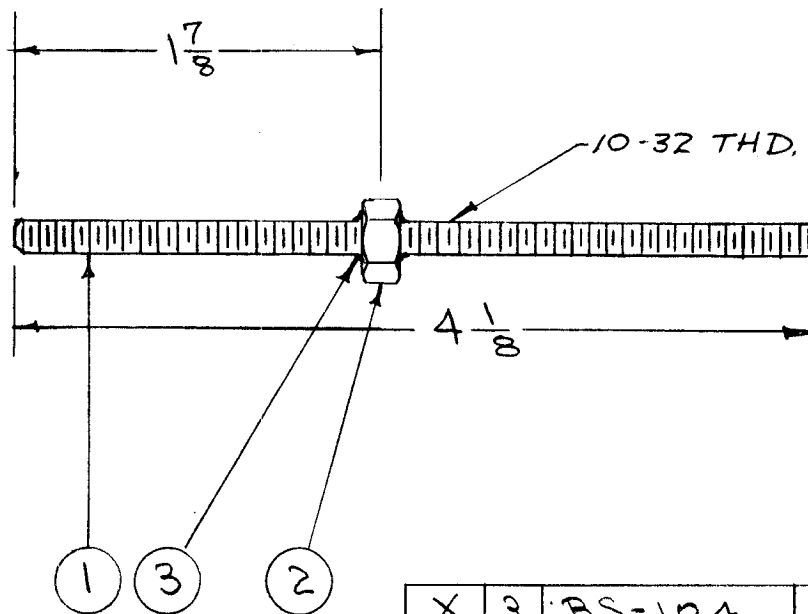
IF IT IS FOUND DESIRABLE TO CHANGE ANY TOLERANCE OR OTHER DETAIL SPECIFIED ON THIS DRAWING NOTIFY THE PURCHASER PROMPTLY.

A-785 B

MAXIMUM ALLOWABLE TOLERANCES HAVE BEEN DETERMINED AND DEVIATIONS WILL BE CAUSE FOR REJECTION. REMOVE ALL BURRS AND SHARP EDGES

USED ON

AMT PER UNIT	MODEL	PROJECT NO.	ASS'Y. NO.	DATE
2	TAC-1	132	A-723	1-25-54



10-32 THD. CLASS 2 FIT, AFTER PLATING.

X	3	BS-104	EUTECTIC, TIN WELD	
1	2	NTH1032BC12	NUT, HEX	
1	1	SM-128	ROD, FEED THRU	N.D.
REQ.	ITEM	PART NO.	DESCRIPTION	SYMBOL
—//—			THE TECHNICAL MATERIEL CORP.	
STOCK SIZE			MAMARONECK. NEW YORK	
BRASS		—//—	FEED-THRU ROD	
MATERIAL		WEIGHT PER PC.	ASSEMBLY TAC-1	
—//—			5 3-5-54	WDE
TYPE & TEMPER			DRAWN	ELEC. DES. APP.
—//—			P.R.	WDE
HEAT TREAT. SPEC.			CHECKED	
SILVER PLATE			FINAL APPROVAL	
.0002			A-785 B	
FINISH & SPEC. NO.				

B	1	1 1/8 WAS 2	4 1/8 WAS 4	4/9/57	2	16	WDE	WDE
A	1	ITEM 3 WAS BS-100		10-18-50	1	P.B.	WDE	WDE
ISSUE	ITEM	CHANGED FROM	DATE	CN. NO.	DRAFTS	CHECKER	ENG. APP.	

TOLERANCES

SCALE

ALL OTHERS  
DEC. DIM. ±  
FRAC. DIM. ± Y16  
ANGULAR DIM. ±

DRILL, PUNCH, COMMERCIAL STOCK SIZES AND MANUFACTURERS TOLERANCES ARE NOT INCLUDED.

IF IT IS FOUND DESIRABLE TO CHANGE ANY TOLERANCE OR OTHER DETAIL SPECIFIED ON THIS DRAWING NOTIFY THE PURCHASER PROMPTLY.

A-786

MAXIMUM ALLOWABLE TOLERANCES HAVE BEEN DETERMINED AND DEVIATIONS WILL BE CAUSE FOR REJECTION. REMOVE ALL BURRS AND SHARP EDGES

REQ  
PER  
UNIT

USED ON

MODEL

PROJECT NO.

ASS'Y. NO.

DATE

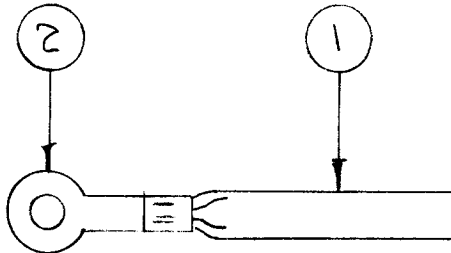
1 EACH

TAC-1

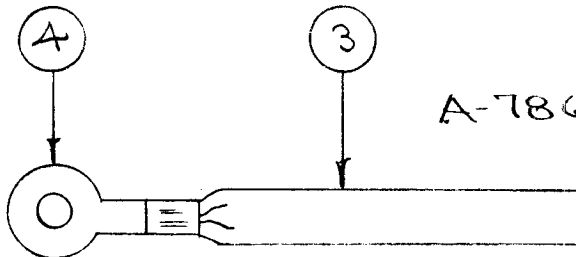
132

A-787

1-28-54



A-786-1



A-786-2

X	5	BS-100	SOLDER, SOFT	
1	4	TE-141-3	TERMINAL	
1	3	MS-526-2	LEAD	
1	2	TE-141-1	TERMINAL	
1	1	MS-526-1	LEAD	
REQ.	ITEM	PART NO.	DESCRIPTION	SYMBOL
#			THE TECHNICAL MATERIEL CORP. MAMARONECK, NEW YORK	
STOCK SIZE				
#		#	CONNECTING STRAP ASSY	
MATERIAL		WEIGHT PER PC.	TAC-1	
#				
TYPE & TEMPER			2.000	
#			ARB	WDE
HEAT TREAT. SPEC.			DRAWN	ELEC. DES. APP. MECH. DES. APP.
#			FADE	ARB WDE
FINISH & SPEC. NO.			CHECKED	FINAL APPROVAL
			A-786	

ISSUE	ITEM	CHANGED FROM	DATE	CN. NO.	DRAFTS	CHECKER	ENG. APP.

TOLERANCES

SCALE

ALL  
OTHERS

DEC. DIM.  $\pm$   
FRAC. DIM.  $\pm$   
ANGULAR DIM.  $\pm$

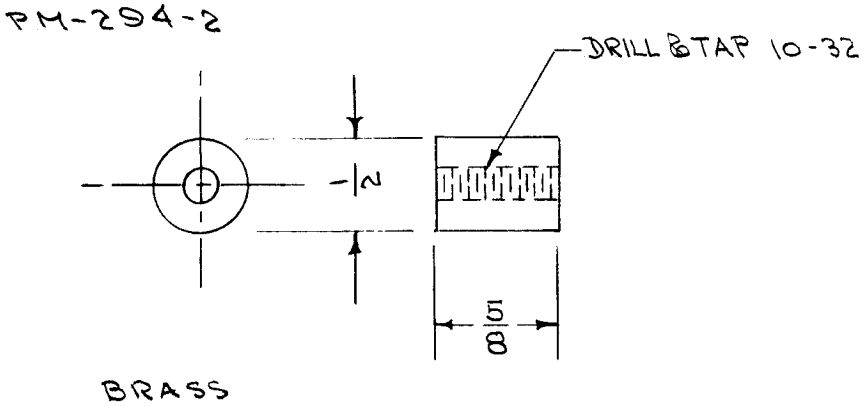
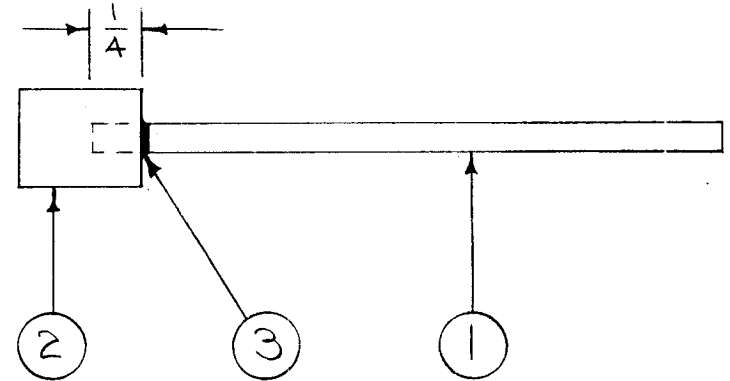
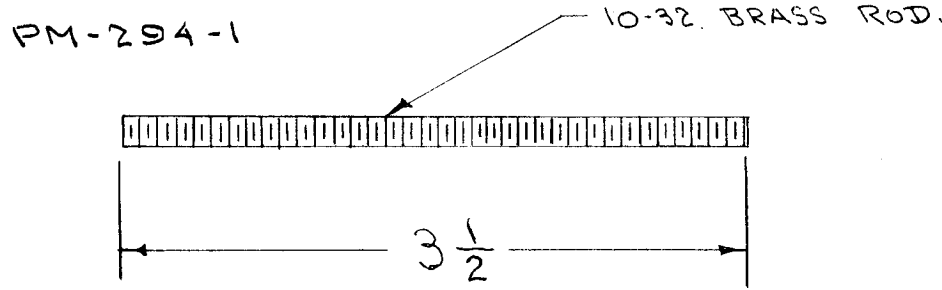
DRILL, PUNCH, COMMERCIAL STOCK  
SIZES AND MANUFACTURERS  
TOLERANCES ARE NOT INCLUDED.

IF IT IS FOUND DESIRABLE TO CHANGE ANY TOLERANCE OR OTHER DETAIL SPECIFIED ON THIS DRAWING NOTIFY THE PURCHASER PROMPTLY.

A-789 C

MAXIMUM ALLOWABLE TOLERANCES HAVE BEEN DETERMINED AND DEVIATIONS WILL BE CAUSE FOR REJECTION. REMOVE ALL BURRS AND SHARP EDGES

REQ PER UNIT	USED ON			
	MODEL	PROJECT NO.	ASS'Y. NO.	DATE
2	CTAC	311	A-799	6-16-54



1	5	FW10 MRC	WASHER, FLAT	DELETED
1	4	NTH1032 BR12	NUT, HEXAGON	DELETED
X	3	BS-104	EUTECTIC TIN WELD	
1	2	PM-294-2	COLLAR (NO DWG)	
1	1	PM-294-1	ROD (NO DWG)	
REQ.	ITEM	PART NO.	DESCRIPTION	SYMBOL
STOCK SIZE			THE TECHNICAL MATERIEL CORP. MAMARONECK. NEW YORK	
MATERIAL			COUPLING EXTENSION	
WEIGHT PER PC.			ASSY. (TAC PLASTIC CASE)	
TYPE & TEMPER			C.D.D. 6-15-54	
HEAT TREAT. SPEC.			DRAWN	ELEC. DES. APP.
FINISH & SPEC. NO.			CHECKED	MECH. DES. APP.
			FINAL APPROVAL	
			A-789 C	

C	1	ITEMS 4,5 Deleted	10/24/54	3	JAB	WLB	WJC
B	1	ITEM 3 Added	7/29/54	2	JAB	WLB	WJC
A	1	3 1/2 WAS 3/4, DELETE #3	7/1/54	1	C.D.D.	JAB	WJC
ISSUE	ITEM	CHANGED FROM	DATE	CN. NO.	DRAFTS	CHECKER	ENG. APP.

TOLERANCES		SCALE
ALL OTHERS	DEC. DIM. ± FRAC. DIM. ± 1/64 ANGULAR DIM. ±	DRILL, PUNCH, COMMERCIAL STOCK SIZES AND MANUFACTURERS TOLERANCES ARE NOT INCLUDED.