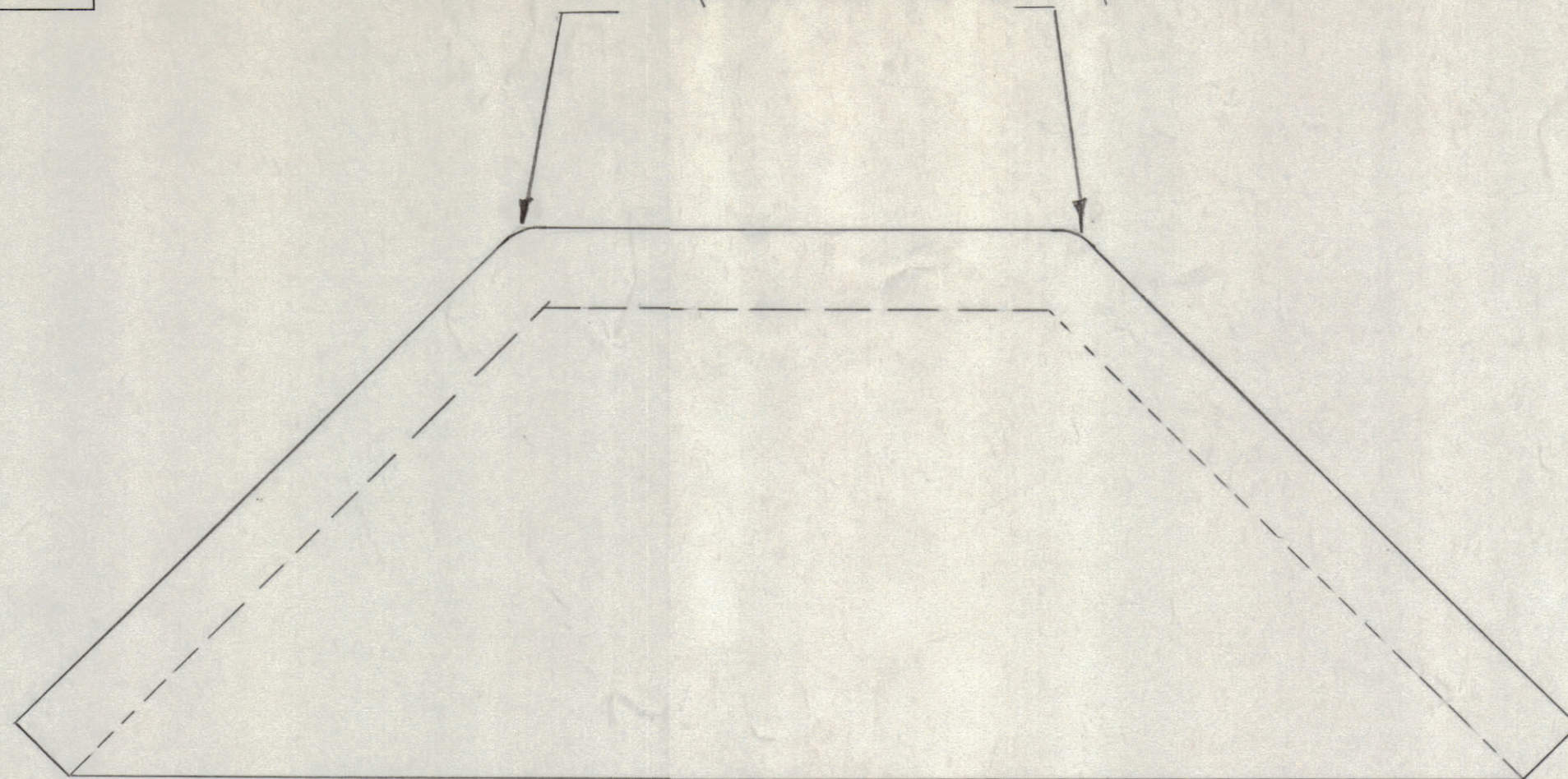


IF IT IS FOUND DESIRABLE TO CHANGE ANY TOLERANCE OR OTHER DETAIL SPECIFIED ON THIS DRAWING NOTIFY THE PURCHASER PROMPTLY.

MAXIMUM ALLOWABLE TOLERANCES HAVE BEEN DETERMINED AND DEVIATIONS WILL BE CAUSE FOR REJECTION. REMOVE ALL BURRS AND SHARP EDGES

After Welding Grind Item 2
To conform with Radius of Item 1



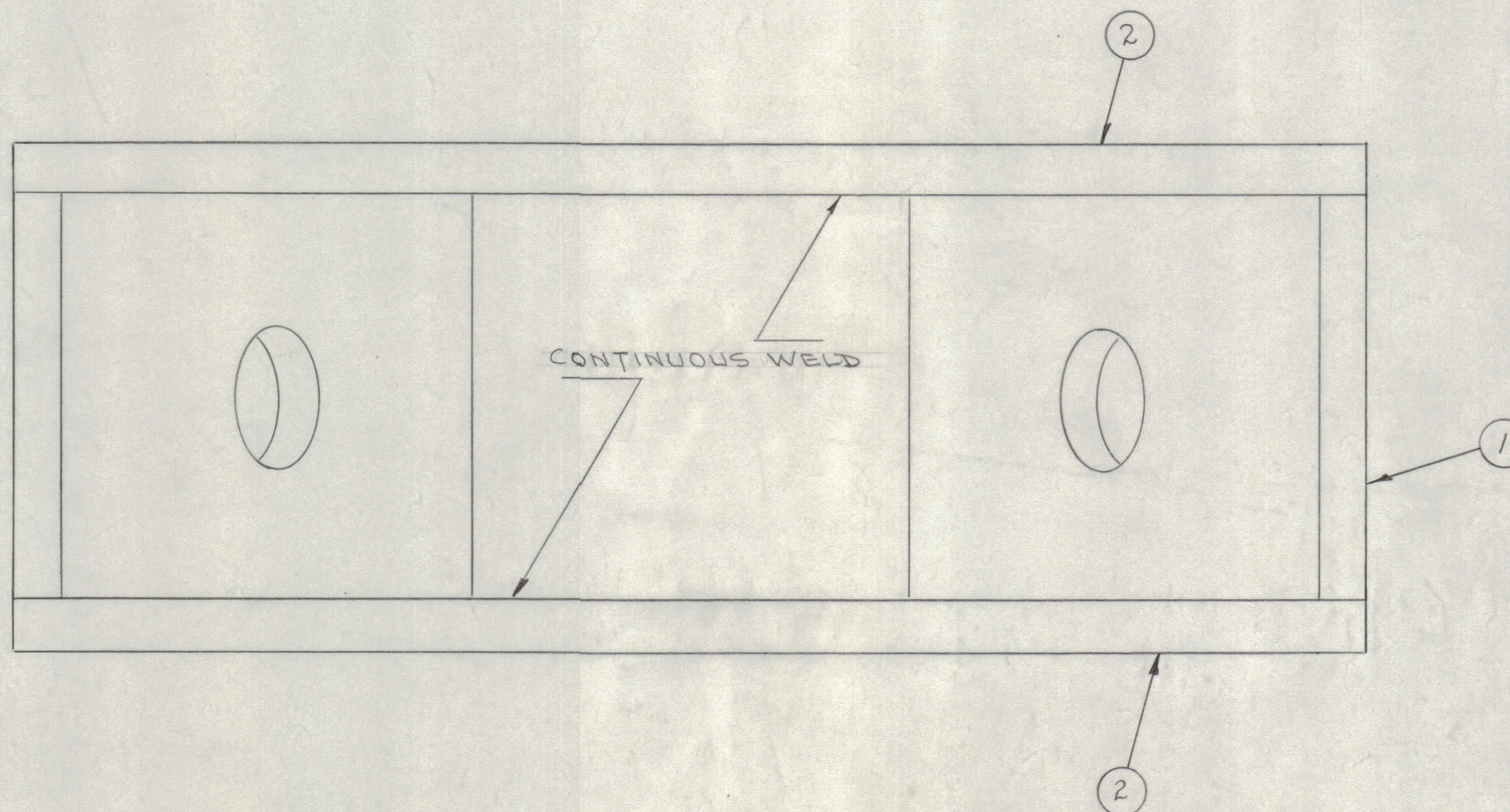
NOTICE TO PERSONS RECEIVING THIS DRAWING

THE TECHNICAL MATERIEL CORPORATION claims proprietary right in the material disclosed hereon. This drawing is issued in confidence for engineering information only and may not be reproduced or used to manufacture anything shown hereon without permission from THE TECHNICAL MATERIEL CORPORATION to the user. This drawing is loaned for mutual assistance and is subject to recall at any time.

Property of:

THE TECHNICAL MATERIEL CORPORATION
MAMARONECK, NEW YORK

A-691



2	2	M5-505	GUSSET PLATE	
1	1	M5-506	GUSSET	
REQ. ITEM	PART NO.		DESCRIPTION	SYMBOL
	#		THE TECHNICAL MATERIEL CORP. MAMARONECK, NEW YORK	
	STOCK SIZE		GUSSET ASSEMBLY (SPLICE ASS'Y.)	
	MATERIAL		LG	
	WEIGHT PER PC.			
	TYPE & TEMPER			
	HEAT TREAT. SPEC.		DRAWN	ELEC. DES. APP. MECH. DES. APP.
	FINISH & SPEC. NO.		CHECKED	FINAL APPROVAL
			REF: GC-70178	A-691

ISSUE	ITEM	CHANGED FROM	DATE	CN. NO.	DRAFTS	CHECKER	ENG. APP.
TOLERANCES		SCALE: #					
ALL OTHERS	DEC. DIM. ± FRAC. DIM. ± ANGULAR DIM. ±	DRILL, PUNCH, COMMERCIAL STOCK SIZES AND MANUFACTURERS TOLERANCES ARE NOT INCLUDED.					

4		287	A-693	2-24-54
AMT. PER UNIT	MODEL	PROJECT NO.	ASS'Y. NO.	DATE
		287	A-692	2-24-54

USED ON