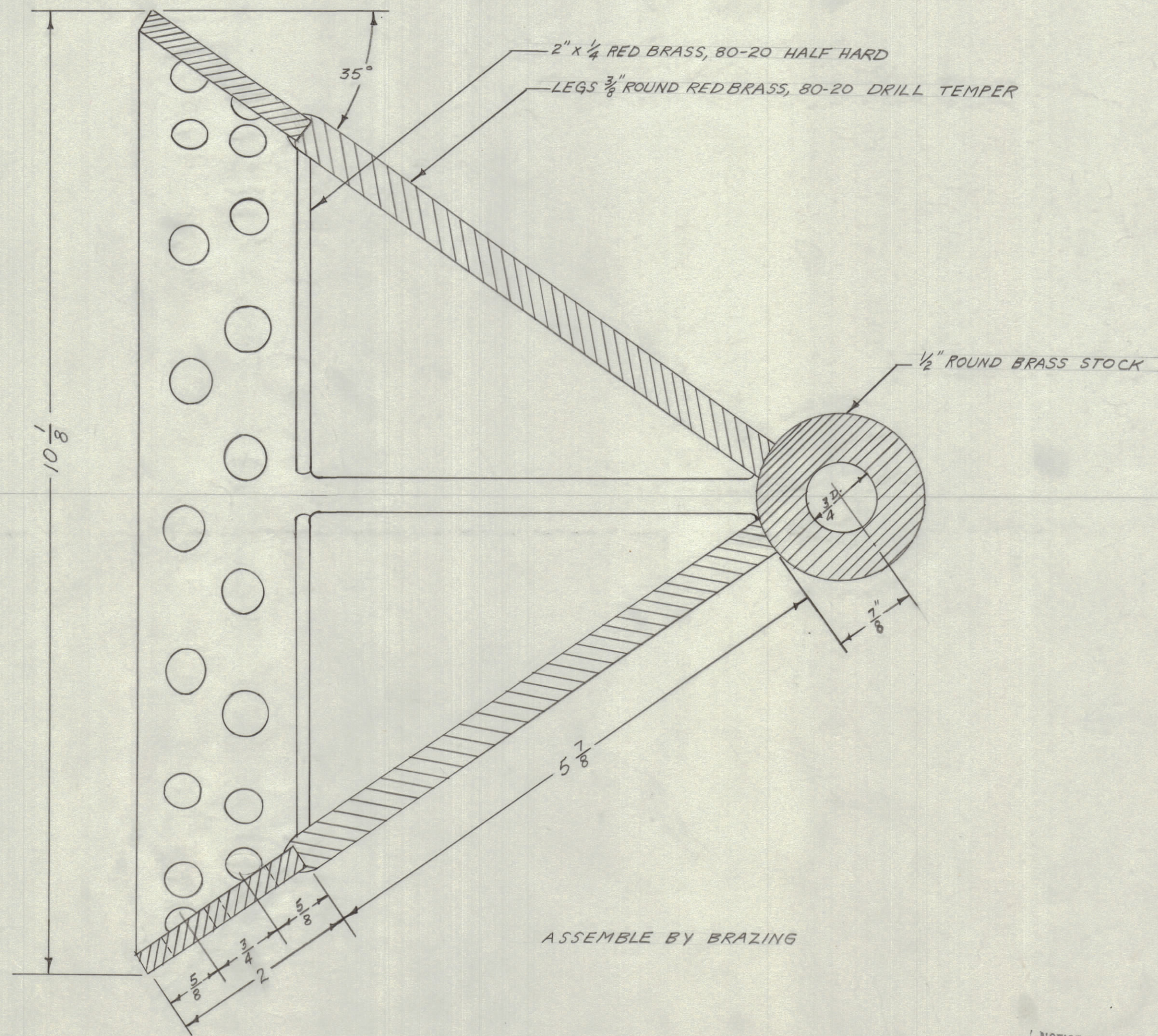
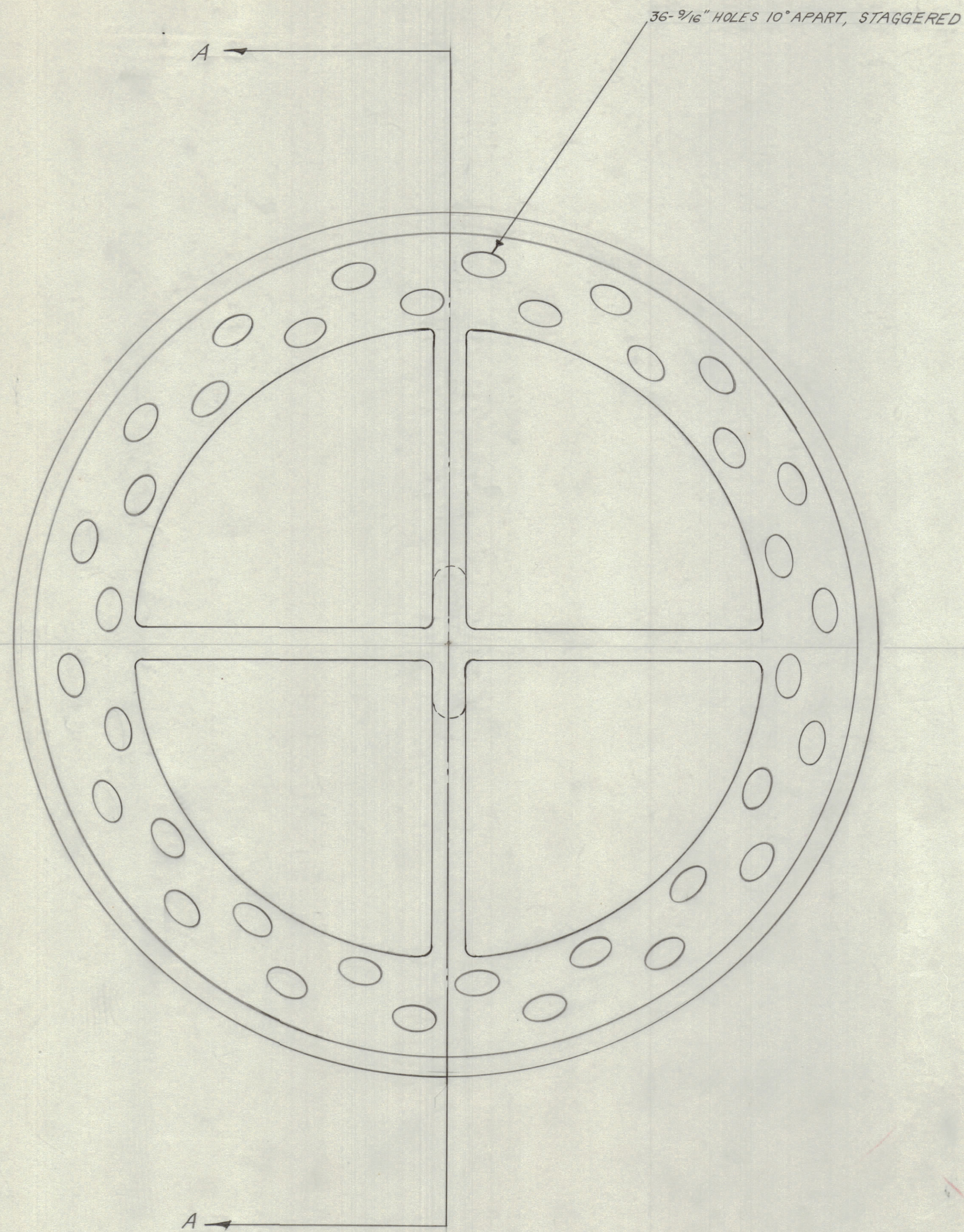


IF IT IS FOUND DESIRABLE TO CHANGE ANY TOLERANCE OR OTHER DETAIL SPECIFIED ON THIS DRAWING NOTIFY THE PURCHASER PROMPTLY.
 MAXIMUM ALLOWABLE TOLERANCES HAVE BEEN DETERMINED AND DEVIATIONS WILL BE CAUSE FOR REJECTION. REMOVE ALL BURRS AND SHARP EDGES



SECTION A-A

NOTICE TO PERSONS RECEIVING THIS DRAWING
 THE TECHNICAL MATERIEL CORPORATION claims proprietary right in the material disclosed hereon. This drawing is issued in confidence for engineering information only and may not be reproduced or used to manufacture anything shown hereon without permission from THE TECHNICAL MATERIEL CORPORATION to the user. This drawing is loaned for mutual assistance and is subject to recall at any time.
 Property of:
 THE TECHNICAL MATERIEL CORPORATION
 MAMARONECK, NEW YORK

REF GC-56097

| ISSUE | ITEM | CHANGED FROM | DATE | CN. NO. | DRAFTS | CHECKER | ENG. APP. |
|------------|--------------|--------------|--------------------------------|---------|--------|---------|-----------|
| TOLERANCES | | SCALE: | | | | | |
| ALL | DEC. DIM. | ± | DRILL, PUNCH, COMMERCIAL STOCK | | | | |
| OTHERS | FRAC. DIM. | ± | SIZES AND MANUFACTURERS | | | | |
| | ANGULAR DIM. | ± | TOLERANCES ARE NOT INCLUDED. | | | | |

| MODEL | PROJECT NO. | ASSY. NO. | DATE |
|-------|-------------|-----------|------|
| | | | |

| REQ. ITEM | PART NO. | DESCRIPTION | SYMBOL |
|--|----------------|----------------------|---------------------------------|
| THE TECHNICAL MATERIEL CORP. MAMARONECK, NEW YORK | | | |
| STOCK SIZE | | DISCONE ANTENNA APEX | |
| MATERIAL | WEIGHT PER PC. | CONSTRUCTION DET. | |
| TYPE & TEMPER | | 6 DRAWN | ELEC. DES. APP. MECH. DES. APP. |
| HEAT TREAT. SPEC. | | 11/10 | 11/10 |
| | | CHECKED | FINAL APPROVAL |
| FINISH & SPEC. NO. | | A-687 | |