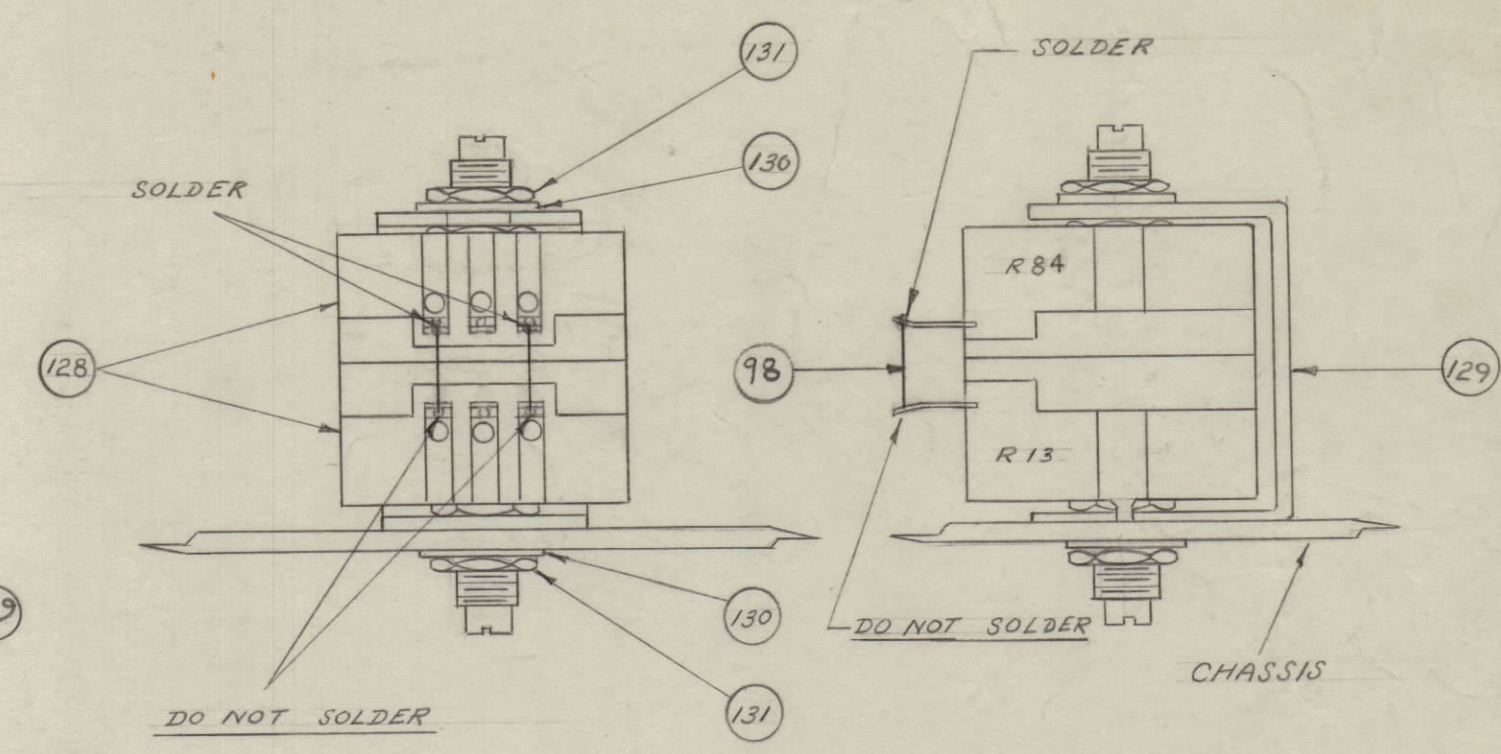
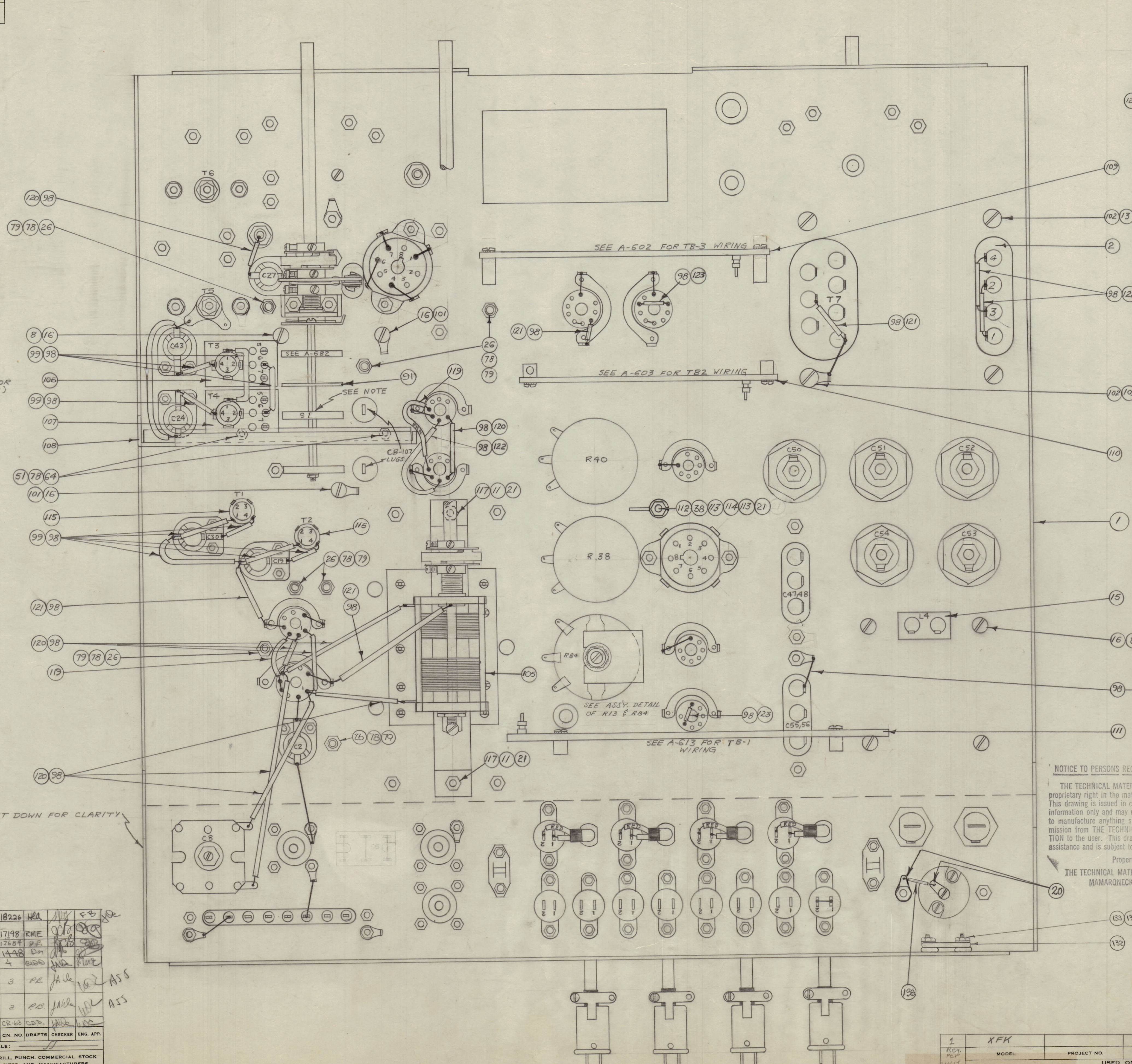


IF IT IS FOUND DESIRABLE TO CHANGE ANY TOLERANCE OR OTHER DETAIL SPECIFIED ON THIS DRAWING NOTIFY THE PURCHASER PROMPTLY.
 MAXIMUM ALLOWABLE TOLERANCES HAVE BEEN DETERMINED AND DEVIATIONS WILL BE CAUSE FOR REJECTION. REMOVE ALL BURRS AND SHARP EDGES



ASSY. DETAIL OF R13 & R84

NOTE: SEE DWG. A-682 FOR WIRING OF SWITCH (S1)

3	138	MWC16(19)U0	WIRE, ELEC., INS.	
1	157	PX 337-8	INSULATION, TERMINAL, STRIP	
1	136	CV11C450	CAPACITOR, VARIABLE, CERAMIC	
6	135	NTH0348BNG	NUT, HEX	
6	134	LWS03 MRN	WASHER, LOCK	
6	133	SCBP0348BNS	SCREW, MACHINE	
3	132	FS-102-1	FASTENER, "S" TYPE	
2	131	NTH 3732BNG	NUT, HEX	
2	130	LWI37MRN	LOCKWASHER, INTERNAL	
7	129	LD957/MS629	BRACKET, BALANCE CONTROL	
2	128	RA100A55C103A	RESISTOR ADJUSTABLE	R13 R84
		127	DELETED	
16	126	NTH0440BNG	NUT, HEX	
2	125	SCBP0632BNG	SCREW, MACH.	
X	124	BS-100	SOLDER, SOFT	
X	123	PX104-6-022	INSULATION, SLEEVING	BLUE
X	122	PX104-2-022	INSULATION, SLEEVING	YEL.
X	121	PX104-1-022	INSULATION, SLEEVING	BLK.
X	120	PX104-4-022	INSULATION, SLEEVING	GRN.
X	119	MWC22(L)U1	CABLE, INSULATED	BRN.
X	118	MWC22(L)U6	CABLE, INSULATED	BLUE
2	117	SCFP0632BNS	SCREW, MACH.	
1	116	A-339	T2 ASS'Y.	
1	115	A-338	T1 ASS'Y.	
1	114	RW-109-34	RESISTOR, W.W.	R14
4	113	WA-102-4	WASHER, FIBRE	
1	112	SCBP0632BNS	SCREW, MACH.	
1	111	A-613	TB1 COMPONENT ASS'Y.	
1	110	A-603	TB2 COMPONENT ASS'Y.	
1	109	A-602	TB3 COMPONENT ASS'Y.	
1	108	MS-223	BOTTOM SHIELD	
1	107	A-341	T4 ASS'Y.	T4
1	106	A-340	T3 ASS'Y.	T3
1	105	A-679	CONDENSOR/BRACK. ASS'Y.	
		104	DELETED	
1	103	TE-104-4	TERMINAL, LOCKING #10	
4	102	SCBP1032BNG	SCREW, MACH.	
2	101	TE-104-3	TERMINAL, LOCKING #8	

NOTICE TO PERSONS RECEIVING THIS DRAWING
 THE TECHNICAL MATERIEL CORPORATION claims proprietary right in the material disclosed herein. This drawing is issued in confidence for engineering information only and may not be reproduced or used to manufacture anything shown herein without permission from THE TECHNICAL MATERIEL CORPORATION to the user. This drawing is loaned for mutual assistance and is subject to recall at any time.
 Property of:
 THE TECHNICAL MATERIEL CORPORATION
 MAMARONECK, NEW YORK

H	ADD. 138, 120	See S1, 14, 2	5/16/47	18226	WJA	WJA	EB
G	B/M COMPLETELY REVISED	SEE SHEET 1 & 2	11/5/46	17198	RME	RME	
F	SEE SHEET 2 OF 3 REVISIONS		3/11/47	13684	DF	DF	
E	ONE(1) 20, 78 & 79 ADDED		7/11/59	14480	DM	DM	
D	ITEMS 132, 3, 4 & 5 ADDED		4/1/60	4	WJA	WJA	
C	ITEMS 128, 129, 130, 131 ADDED		2/27/52	3	WJA	WJA	102 ASS
B	ASSY. DETAIL OF R13 & R84						
B	1 LUG FROM TB2 COL. REMOVED		12-14-59	2	WJA	WJA	ASS
B	2 ITEM 113 WAS 2 REQ.						
A	1 ITEM 125, 126, 127 ADDED						
A	1 60 ADDED. PIN 6, V5		7/24/54	CR-63	WJA	WJA	
ISSUE	ITEM	CHANGED FROM	DATE	CN. NO.	DRAFTS	CHECKER	ENG. APP.
TOLERANCES		SCALE:					
ALL	DEC. DIM. ±	DRILL, PUNCH, COMMERCIAL STOCK					
OTHERS	FRAC. DIM. ±	SIZES AND MANUFACTURERS					
	ANGULAR DIM. ±	TOLERANCES ARE NOT INCLUDED.					

1	XFK	A 689	2-15-54
MODEL	PROJECT NO.	ASSY. NO.	DATE
USED ON			

THE TECHNICAL MATERIEL CORP.			
MAMARONECK, NEW YORK			
HARDWARE & JUMPER ASS'Y.			
MAIN CHASSIS XFK			
TYPE & TEMPER	16 2-15-54	A. J. J.	WJA
DRAWN	ELEC. DES. APP.	MECH. DES. APP.	
HEAT TREAT. SPEC.	CHECKED	FINAL APPROVAL	
FINISH & SPEC. NO.	69.3 of 3	A 684	H