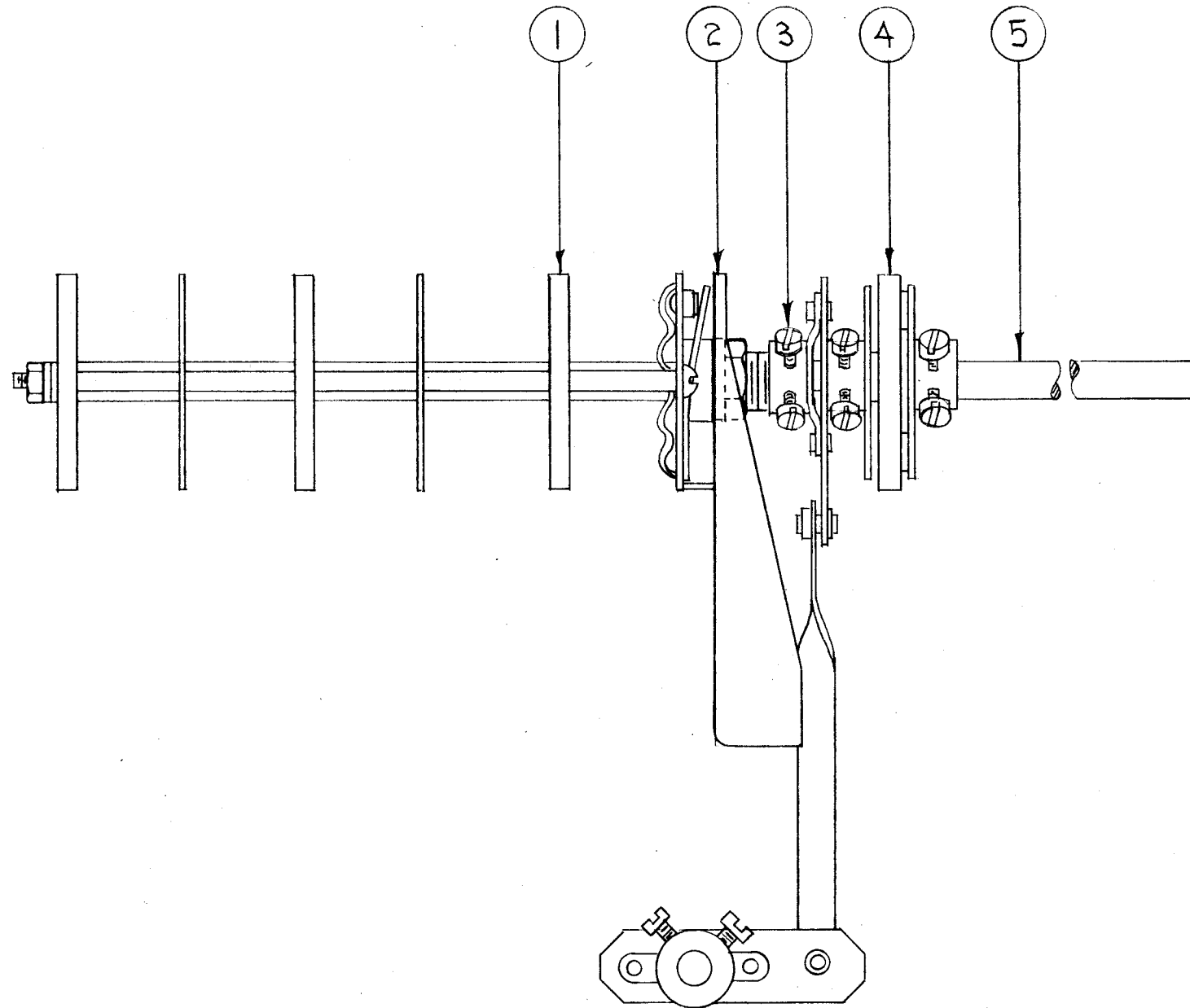


IF IT IS FOUND DESIRABLE TO CHANGE ANY TOLERANCE OR OTHER DETAIL SPECIFIED ON THIS DRAWING NOTIFY THE PURCHASER PROMPTLY.

MAXIMUM ALLOWABLE TOLERANCES HAVE BEEN DETERMINED AND DEVIATIONS WILL BE CAUSE FOR REJECTION. REMOVE ALL BURRS AND SHARP EDGES

A-683 B



1	5	FP-113	SHAFT, SW. EXTENSION	
1	4	MC-104-2	COUPLING, FLEX.	
1	3	A-355	LINKAGE ASSY.	
1	2	MS-219	SWITCH BRACKET	
1	1	A-682	SWITCH, SUB ASSY.	
REQ.	ITEM	PART NO.	DESCRIPTION	SYMBOL
STOCK SIZE			THE TECHNICAL MATERIEL CORP. MAMARONECK. NEW YORK	
MATERIAL WEIGHT PER PC.				
TYPE & TEMPER			SWITCH LINKAGE ASSY.	
HEAT TREAT. SPEC.			X F K	
FINISH & SPEC. NO.			CDD. 2-9-54	
			A-683 B	

B	IT 1, DELE (SW110) S1	11/11/66	17223	RME	<i>[Signature]</i>	<i>[Signature]</i>	
A	ITEM 1 WAS S2	12-13-54	1	P.B.	<i>[Signature]</i>	<i>[Signature]</i>	
ISSUE	ITEM	CHANGED FROM	DATE	CN. NO.	DRAFTS	CHECKER	ENG. APP.
TOLERANCES		SCALE: $\frac{1}{2}$ " = 1"					
ALL OTHERS	DEC. DIM. $\pm$ FRAC. DIM. $\pm$ ANGULAR DIM. $\pm$	DRILL, PUNCH, COMMERCIAL STOCK SIZES AND MANUFACTURERS TOLERANCES ARE NOT INCLUDED.					
1	XFK	A-684 (Pg. 3 of 3)		2-9-54			
REQ. PER UNIT	MODEL	PROJECT NO.	ASSY. NO.	DATE			
USED ON							