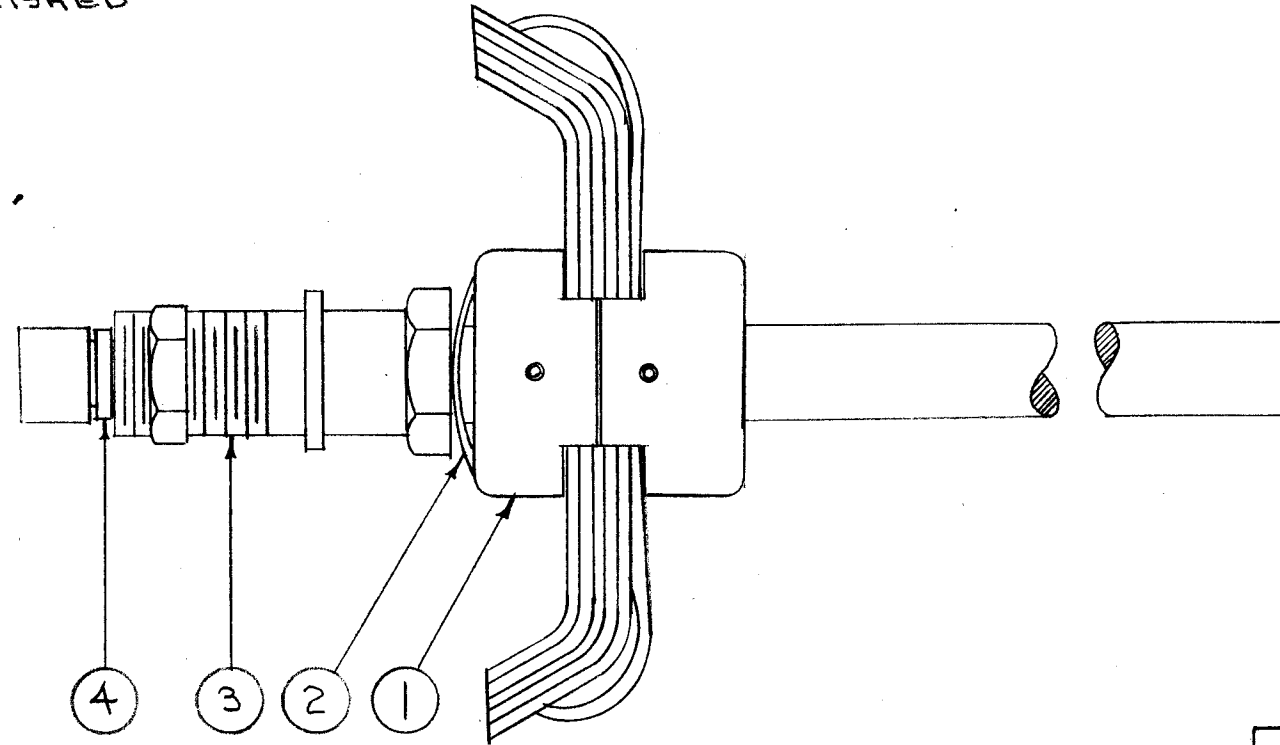


IF IT IS FOUND DESIRABLE TO CHANGE ANY TOLERANCE OR OTHER DETAIL SPECIFIED ON THIS DRAWING NOTIFY THE PURCHASER PROMPTLY.

MAXIMUM ALLOWABLE TOLERANCES HAVE BEEN DETERMINED AND DEVIATIONS WILL BE CAUSE FOR REJECTION. REMOVE ALL BURRS AND SHARP EDGES

A-673

MOUNTING HARDWARE - NUT AND LOCKWASHER FURNISHED



1	4	WA-113	WASHER, "C" TYPE	
1	3	SM-12A	BEARING, PANEL	
1	2	WA-119	WASHER, SPRING	
1	1	A-667	DOUBLE LEAF SWITCH SUB ASSY.	
REQ.	ITEM	PART NO.	DESCRIPTION	SYMBOL
#			THE TECHNICAL MATERIEL CORP. MAMARONECK. NEW YORK	
STOCK SIZE				
#		#	DOUBLE LEAF SWITCH ASSY.	
MATERIAL		WEIGHT PER PC.	TAC-1	
#			C.D.D. 12-30-53	
TYPE & TEMPER			OKB	WDE
#			DRAWN	ELEC. DES. APP. MECH. DES. APP.
HEAT TREAT. SPEC.			OKB	WDE
#			CHECKED	FINAL APPROVAL
FINISH & SPEC. NO.			A-673	

ISSUE	ITEM	CHANGED FROM	DATE	CN. NO.	DRAFTS	CHECKER	ENG. APP.
TOLERANCES		SCALE: #					
ALL OTHERS	DEC. DIM. ± FRAC. DIM. ± ANGULAR DIM. ±	DRILL, PUNCH, COMMERCIAL STOCK SIZES AND MANUFACTURERS TOLERANCES ARE NOT INCLUDED.					

1	TAC-1	132	A-720	1-14-54
REQ. PER UNIT	MODEL	PROJECT NO.	ASS'Y. NO.	DATE
USED ON				