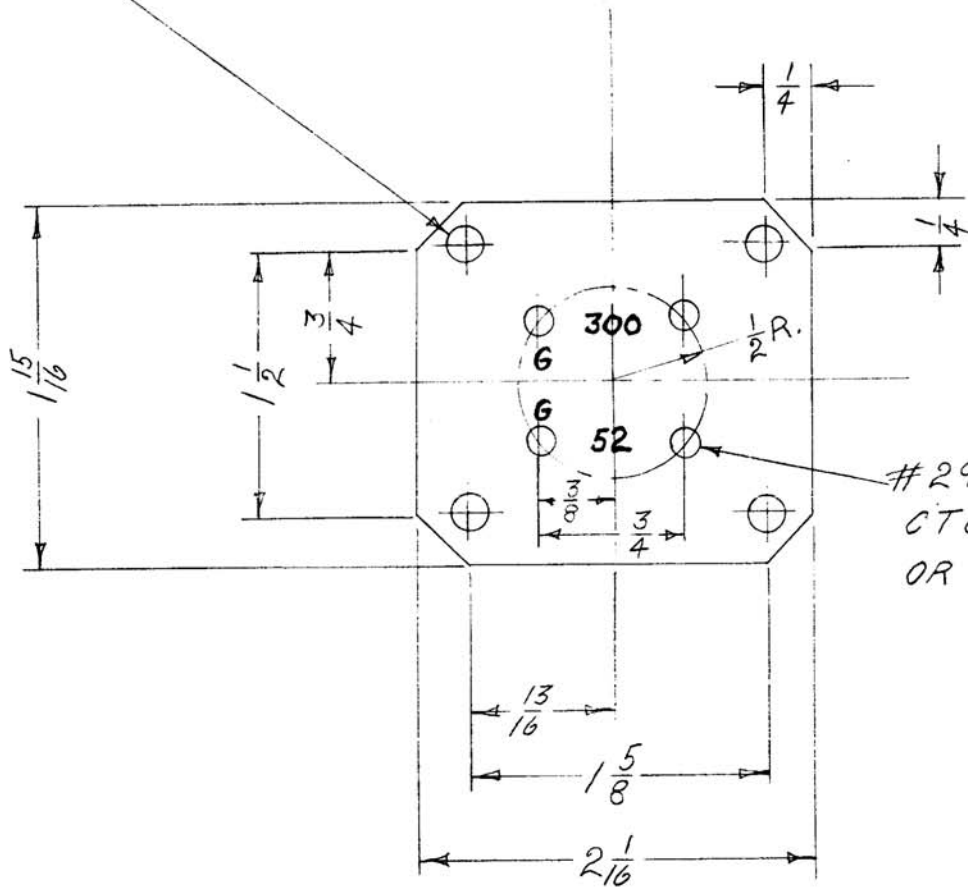


A-662

SYM	DATE	DESCRIPTION	CK	APP
A	1/5/56	WAS TR012	FAI	CRB

#28 DRILL 4 HOLES



#29 DRILL 4 HOLES
CTC X 1783D.
OR EQUIVALENT

REF. #AEM104

was AMM035
1/29/54

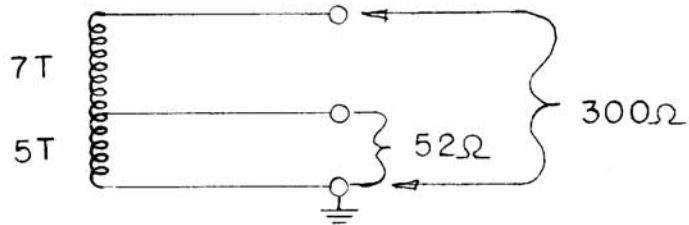
MATERIAL: $\frac{1}{8}$ THK NATURAL XXXP LAMINATED PHENOLIC.

JOB 133

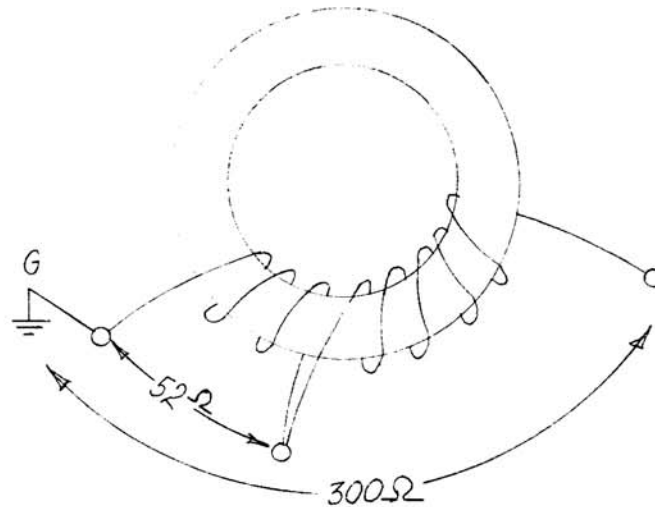
DATE 8-14-52	TERMINAL BOARD TR-140	THE TECHNICAL MATERIEL CORPORATION MAMARONECK, NEW YORK
DRN. C.M.B. 8/14/52		
CHKD. <i>[Signature]</i>		
APPD. <i>[Signature]</i>		
SHEET 1 OF 3		NO. A-662A

SYM	DATE	DESCRIPTION	CK	APP
A	8/5/52	WAS TR-012	JAG	ARB

CORE: FERAMIC 109 "H"
WIRE: #30 COTENAMEL



300 OHMS UNBALANCED TO 52Ω UNBALANCED



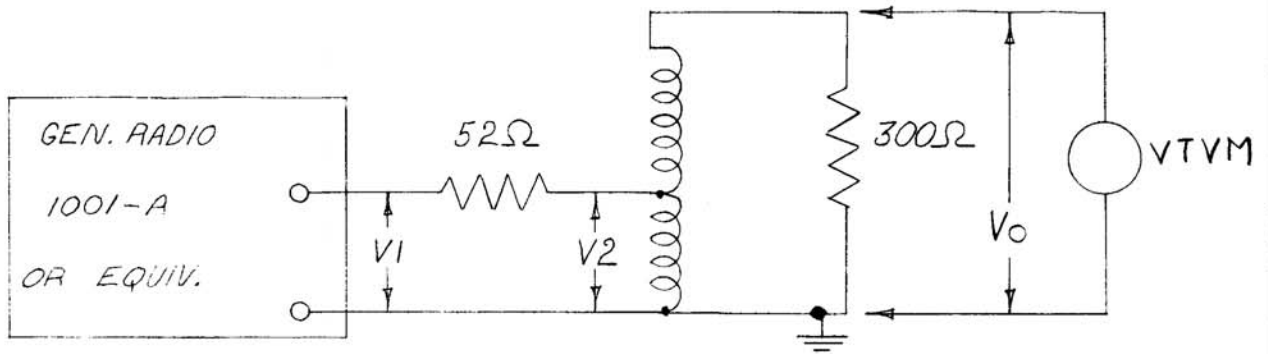
WAS AEM104
1/29/54

REF. DWG #AMM035: USE STANDARD ANTENNA
COUPLER CONTAINER POT IN WAX COMPOUND,
SUSPEND COIL WITH CORD.

JOB 133

DATE 8.15.52	ANTENNA COUPLER TR-140 2-18 M.C.	THE TECHNICAL MATERIEL CORPORATION MAMARONECK, NEW YORK	
DRN. E.M.B. 8/15/52			
CHKD. ARB			
APPD. ARB			
		SHEET 2 OF 3	NO. A-662 A

SYM	DATE	DESCRIPTION	CK	APP
A	6/5/56	WAS TR012	AEB	APP



FREQ. MC	V1(VOLTS)	V2(VOLTS)	V0(VOLTS)
2	.8	.39	.79
6	.8	.42	.82
18	.8	.44	.82

V1 & V2 TAKEN WITH H.P. 410 B
V0 TAKEN WITH MEASUREMENTS CORP. MODEL 62

REF. DWG. # AEM 104

was AES045
1/29/54

JOB 133

DATE 8-15-52	TEST DATA TR-140	THE TECHNICAL MATERIEL CORPORATION MAMARONECK, NEW YORK	
DRN. E.M.B. 8/15/52			
CHKD. APP			
APPD. APP			
		SHEET 3 OF 3	NO. A-662A