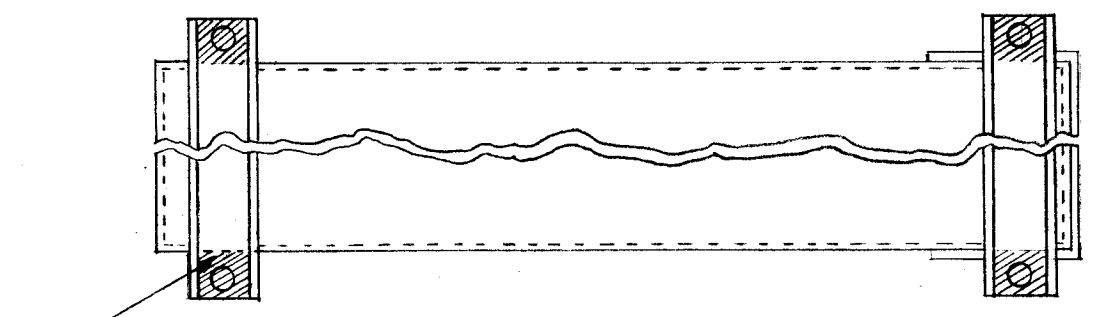


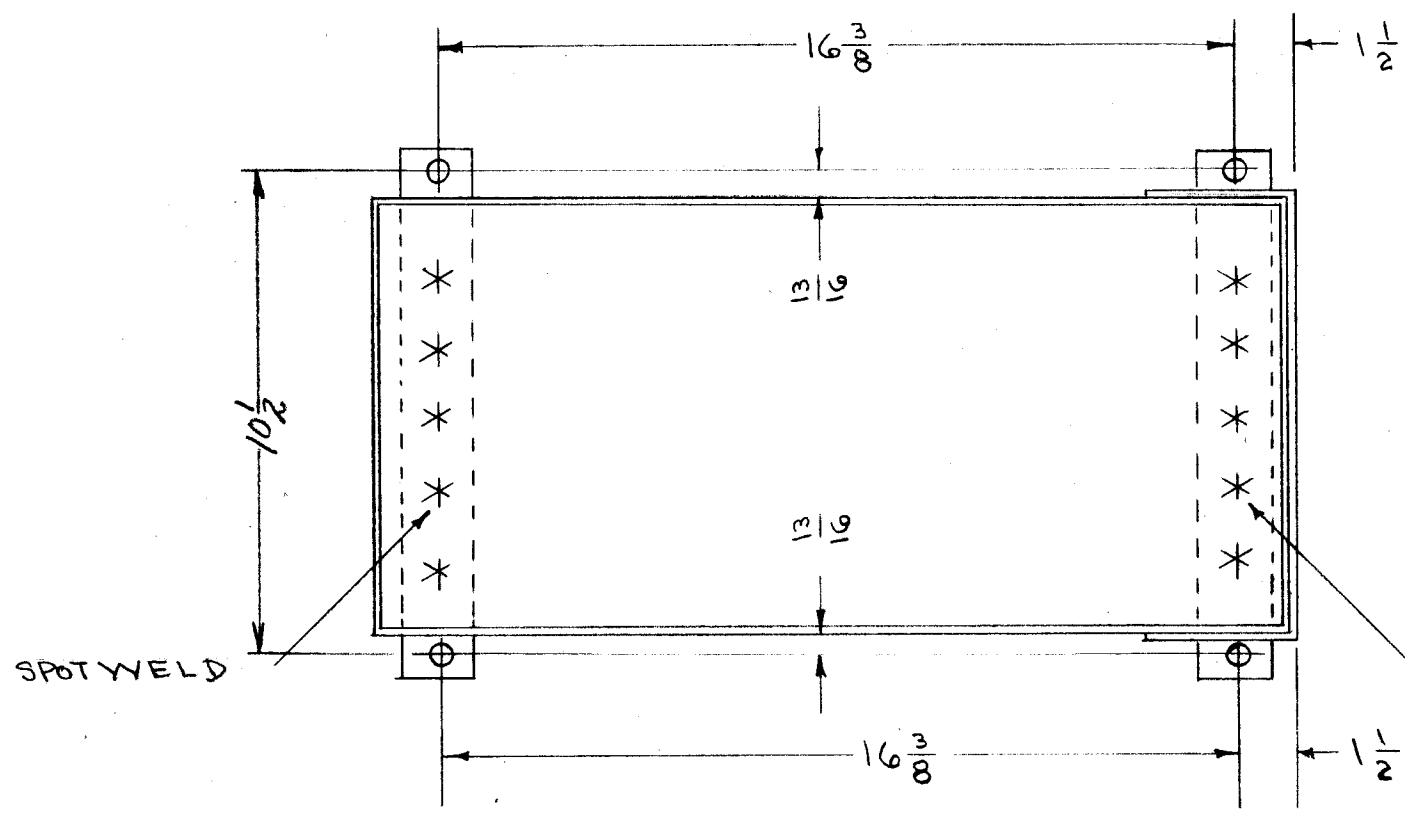
IF IT IS FOUND DESIRABLE TO CHANGE ANY TOLERANCE OR OTHER DETAIL SPECIFIED ON THIS DRAWING NOTIFY THE PURCHASER PROMPTLY.

MAXIMUM ALLOWABLE TOLERANCES HAVE BEEN DETERMINED AND DEVIATIONS WILL BE CAUSE FOR REJECTION. REMOVE ALL BURRS AND SHARP EDGES

A-645 D



MASK UNDERSIDE OF BRACKETS (SHADED AREAS)



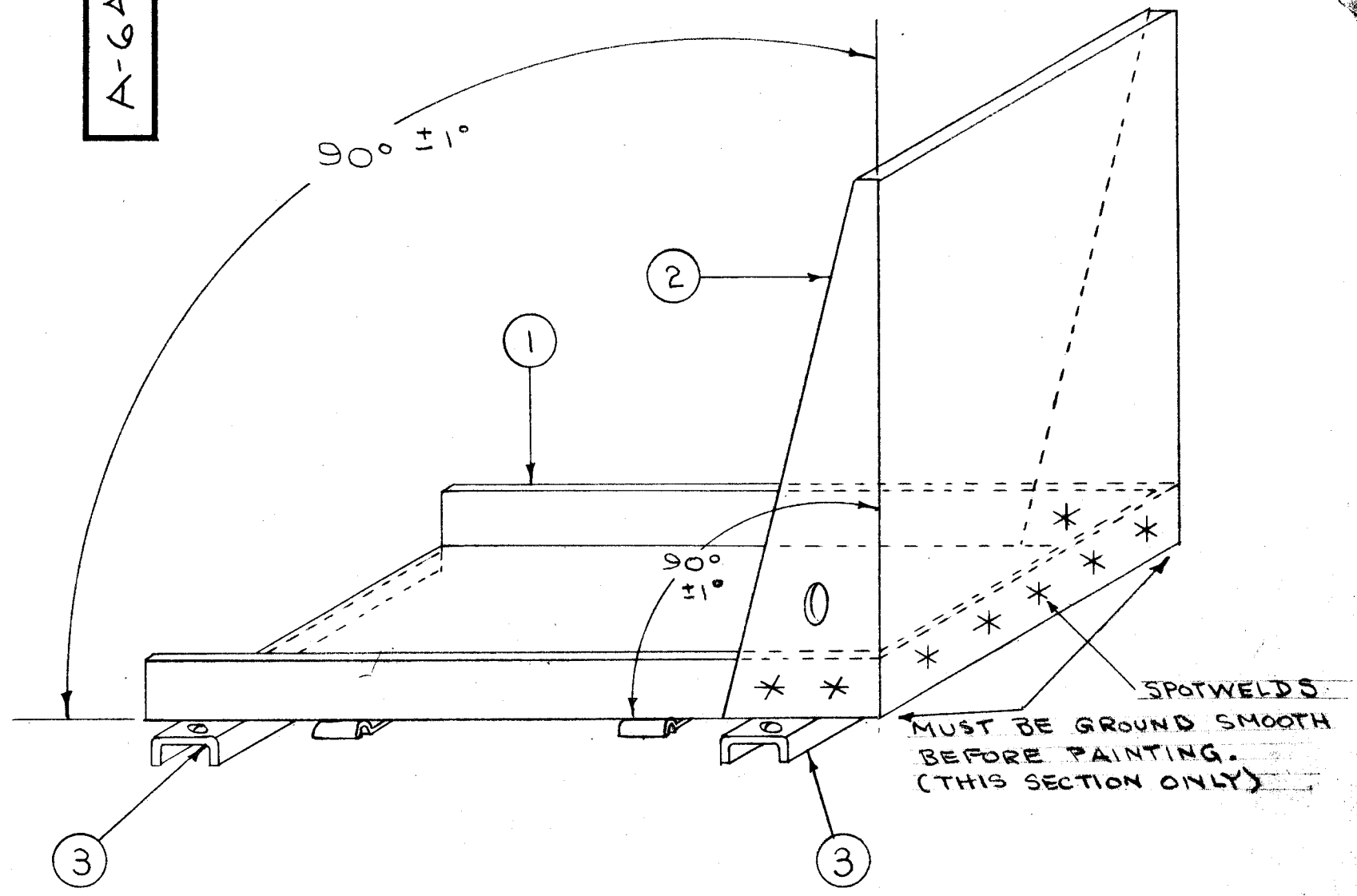
SPOTWELD

SPOTWELD

NOTE
GRIND ROUGH SPOT WELDS

NOTE - FINISH AFTER WELDING - COPPER PLATE ENTIRE UNIT.

S-114 ZINC CHROMATE PRIMER - (OUT SIDE SURFACES)
S-220 RCAF BLUE GREY ENAMEL - (EXCEPT MASKED AREAS AS SHOWN)
OR PRIME & PAINT TO CUSTOMERS SPEC.



SPOTWELDS
MUST BE GRIND SMOOTH BEFORE PAINTING. (THIS SECTION ONLY)

REQ.	ITEM	PART NO.	DESCRIPTION	SYMBOL
2	3	MS-449	BOTTOM BRACKETS	
1	2	MS-445	FRONT PANEL	
1	1	MS-444	BOTTOM CHASSIS	
			THE TECHNICAL MATERIEL CORP, MAMARONECK, NEW YORK	
			CHASSIS SUB ASSEMBLY	
			TAC-1	
			CD.D. 12/28/54	QRPB
			H.A.	QRPB
			CHECKED	FINAL APPROVAL
			SEE NOTE	A-645 D

ISSUE	ITEM	CHANGED FROM	DATE	CN. NO.	DRAFTS	CHECKER	ENG. APP.
E	1	S-220 WAS S245 RCAF GREY WRINKLE	4/12/61	4643	DM	WDE	DM
D	1	ADDED 10 1/2 DIM	10/30/54		AKC	WDE	AKC
C	1	NOTE FINISH CHG'D. (S-220)	1/24/57	3	SL	WDE	SL
B	1	GRIND SPOTWELD NOTE ADDED	4/9/54	2	C.B.D.	WDE	C.B.D.
A	1	PAINT SPEC. CHANGED	3/1/54	1	C.B.D.	WDE	C.B.D.

TOLERANCES		SCALE:
ALL OTHERS	DEC. DIM. ± FRAC. DIM. ± 1/64 ANGULAR DIM. ± 1°	DRILL, PUNCH, COMMERCIAL STOCK SIZES AND MANUFACTURERS TOLERANCES ARE NOT INCLUDED.

MODEL	PROJECT NO.	ASSY. NO.	DATE
1 TAC-1	132	A-715	1-20-54