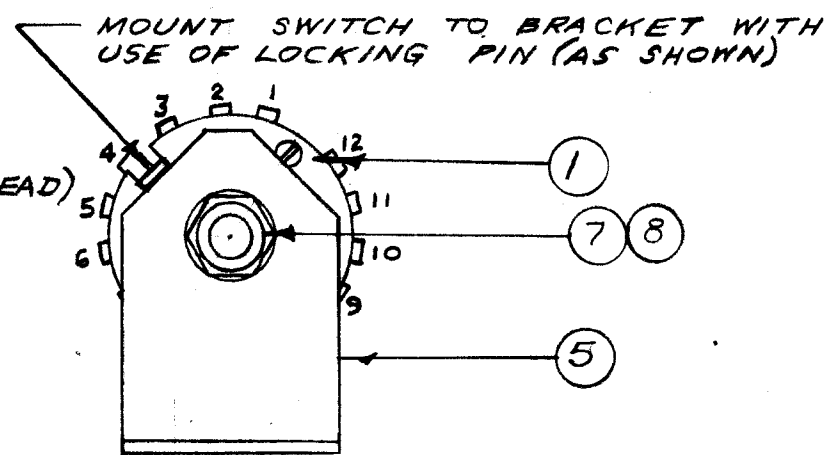
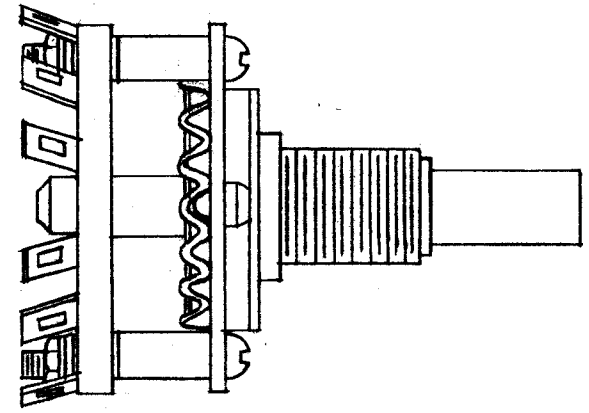
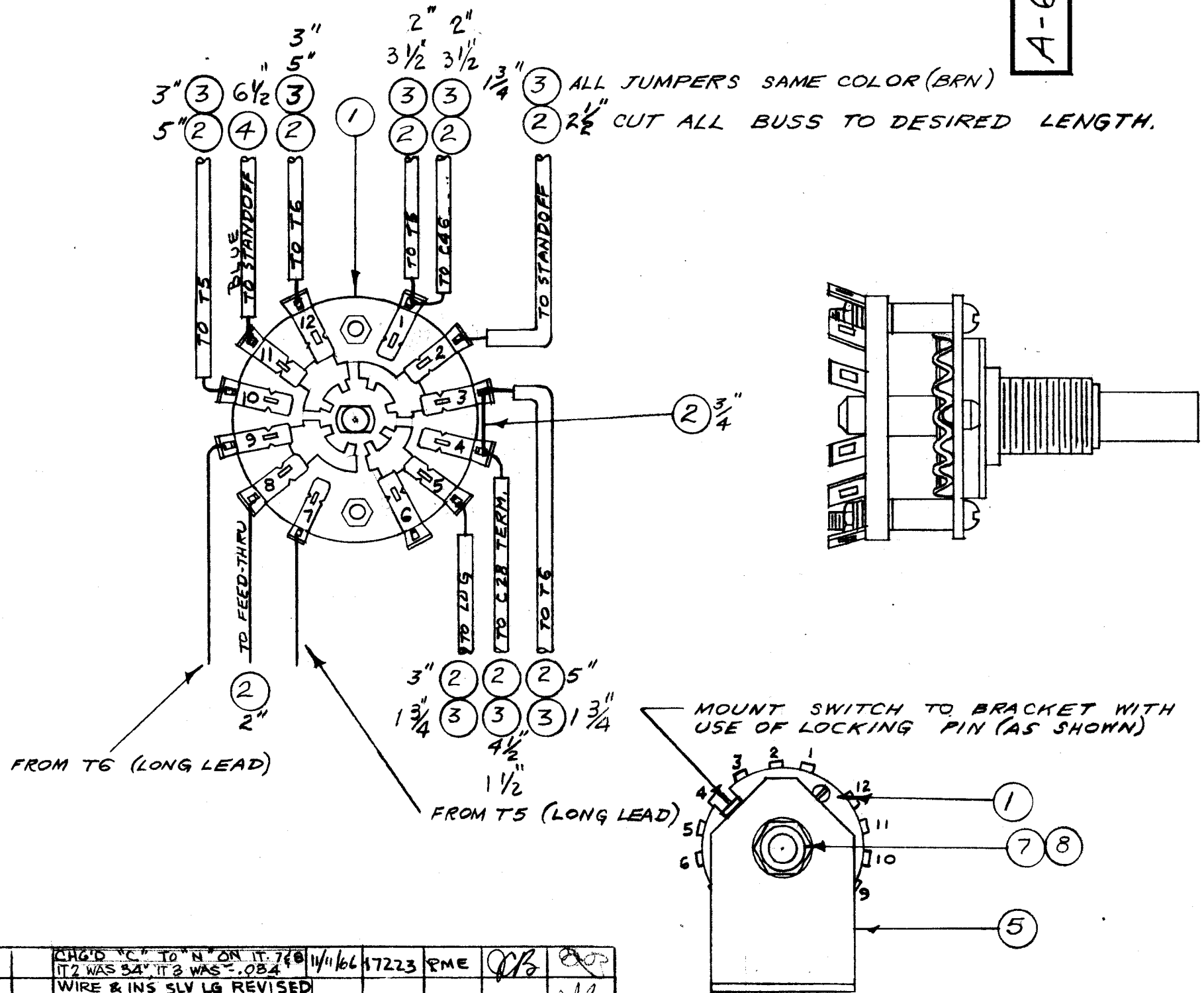


IF IT IS FOUND DESIRABLE TO CHANGE ANY TOLERANCE OR OTHER DETAIL SPECIFIED ON THIS DRAWING NOTIFY THE PURCHASER PROMPTLY.

MAXIMUM ALLOWABLE TOLERANCES HAVE BEEN DETERMINED AND DEVIATIONS WILL BE CAUSE FOR REJECTION. REMOVE ALL BURRS AND SHARP EDGES

A-643 C



FROM T6 (LONG LEAD)

FROM T5 (LONG LEAD)

MOUNT SWITCH TO BRACKET WITH USE OF LOCKING PIN (AS SHOWN)

1	8	NTH3732BN16	NUT HEX.	
1	7	LWI37MRN	LOCKWASHER, INT.	
X	6	BS-100	SOLDER, SOFT	
1	5	MS-215	MOUNTING PLATE	
6 1/2	4	FWC22(7)U-6	CABLE, INSULATED (SIZE 22)	BLUE
16 3/4	3	PX-104-5-034	INSULATION, SLEEVING (SIZE 20)	BRN.
34 3/4	2	WL-100-7	WIRE, BUSS 22 GA.	
1	1	SW-116	SWITCH, ROTARY	S9

REQ. ITEM	PART NO.	DESCRIPTION	SYMBOL
THE TECHNICAL MATERIEL CORP. MAMARONECK. NEW YORK			
SWITCH WIRING SUB-ASS'Y XFK			
DATE		DESIGNED	DRAWN
12-30-53		A.J.J.	W.C.
CHECKED		ELEC. DES. APP.	MECH. DES. APP.
P.J.B.		A.J.J.	
FINAL APPROVAL			
A-643 C			

C	CHG'D TO N ON IT 748 IT 2 WAS 54 IT 3 WAS .084	11/11/66	17223	RME	OK	
B	WIRE & INS SLV LG REVISED ON BUILD UP QUAN. ITEM (3) WAS 14 - QUAN. ITEM (4) WAS 5"	9-13-63	9924	G.D.L.	YAK	YAK
A	Item (4) Was SRIR 3/5(7)-22-U-66	12-26-61	6097	L.L.	YAK	YAK

TOLERANCES		SCALE: 1/16"	
ALL OTHERS	DEC. DIM. ± FRAC. DIM. ± ANGULAR DIM. ±	DRILL PUNCH, COMMERCIAL STOCK SIZES AND MANUFACTURERS TOLERANCES ARE NOT INCLUDED.	

1	XFK		A-684 (Pg. 2 of 3)	12-30-53
AMT. PER UNIT	MODEL	PROJECT NO.	ASS'Y. NO.	DATE

USED ON