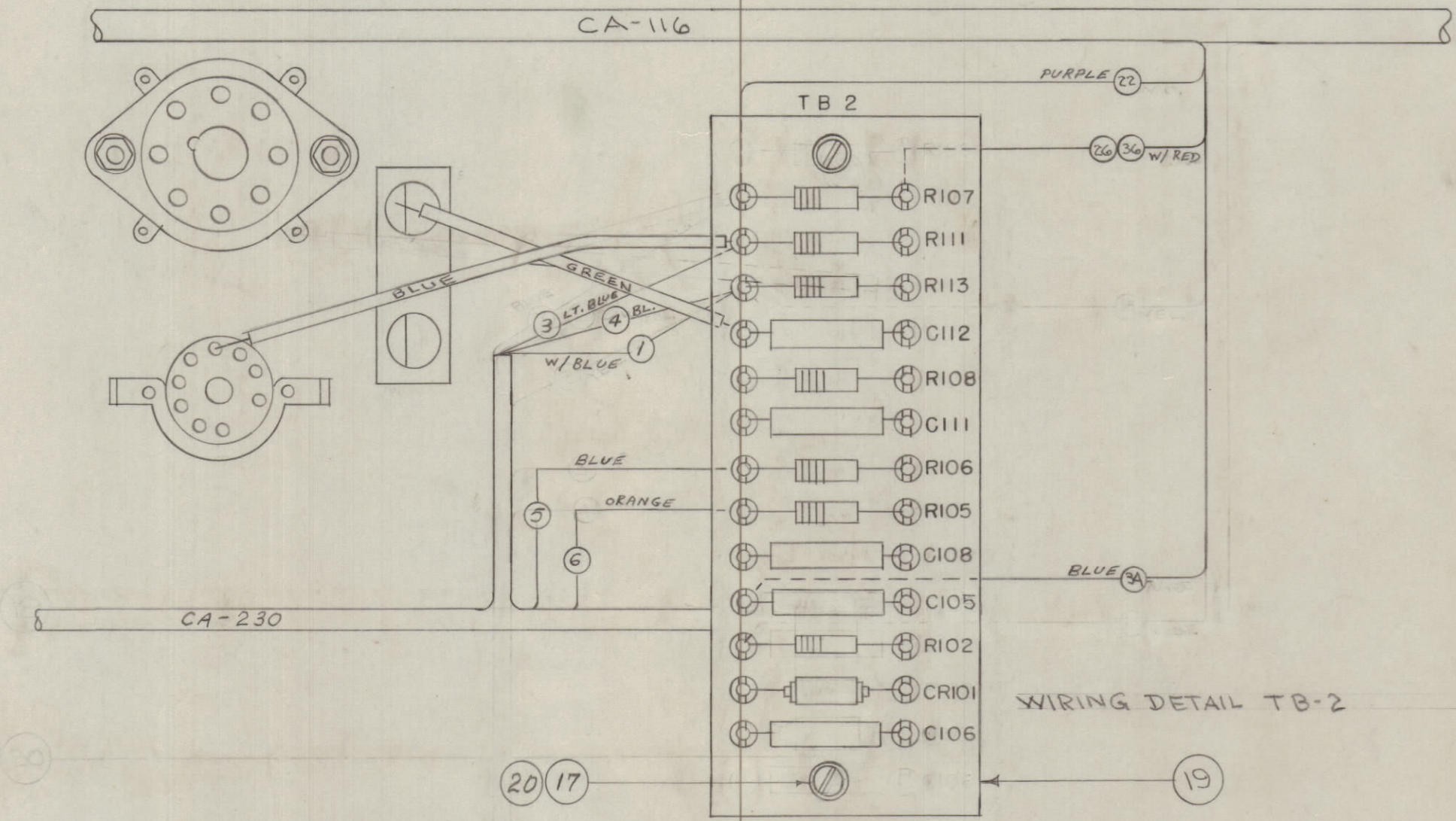
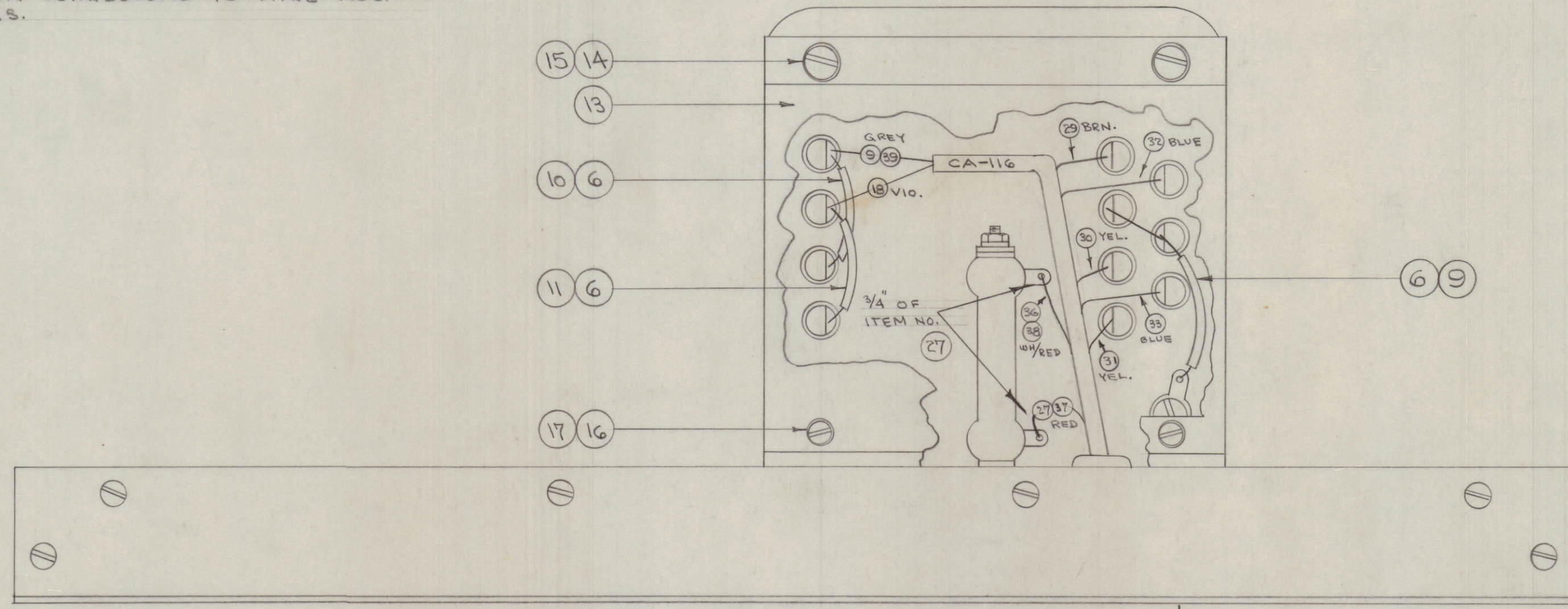


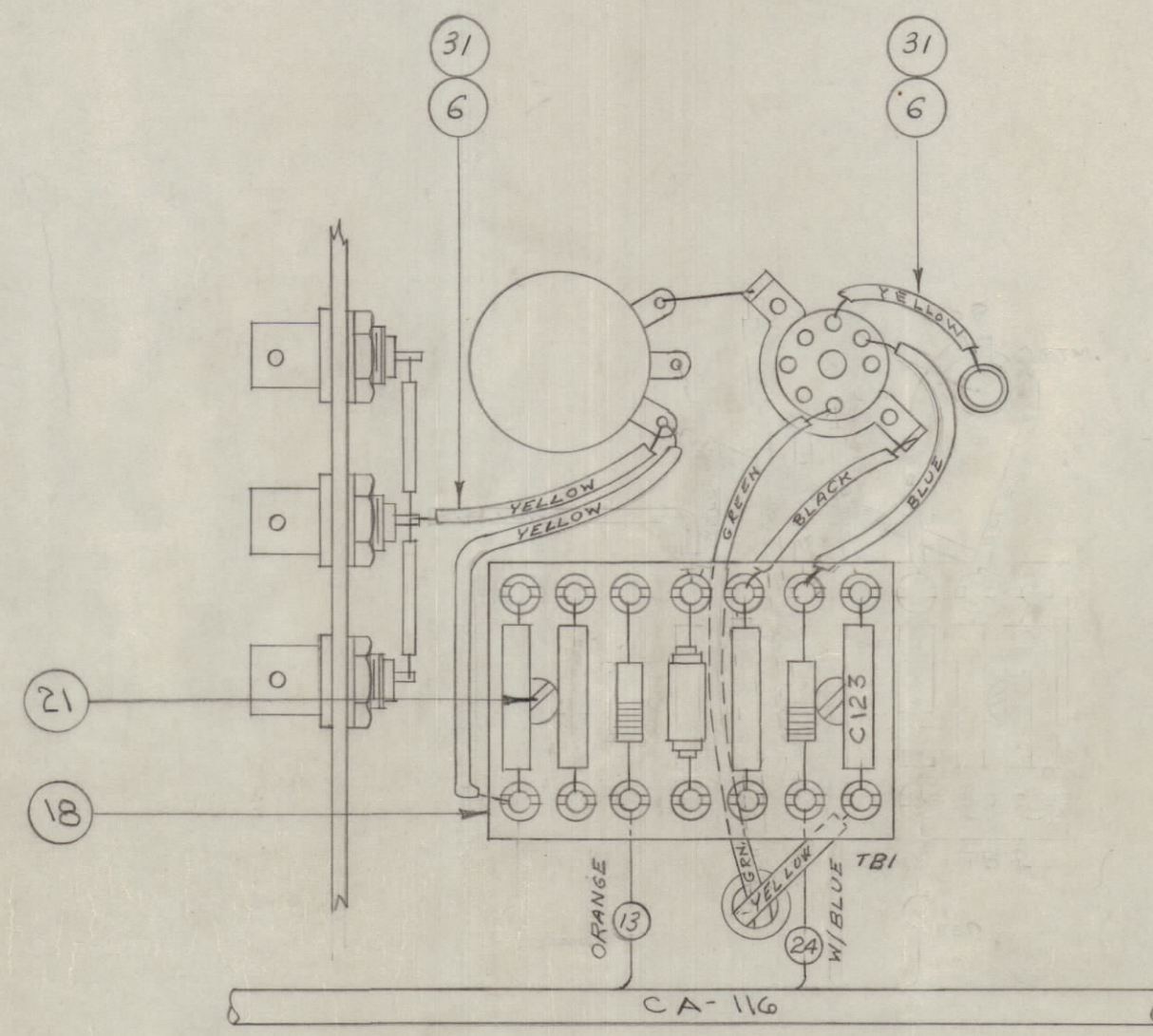
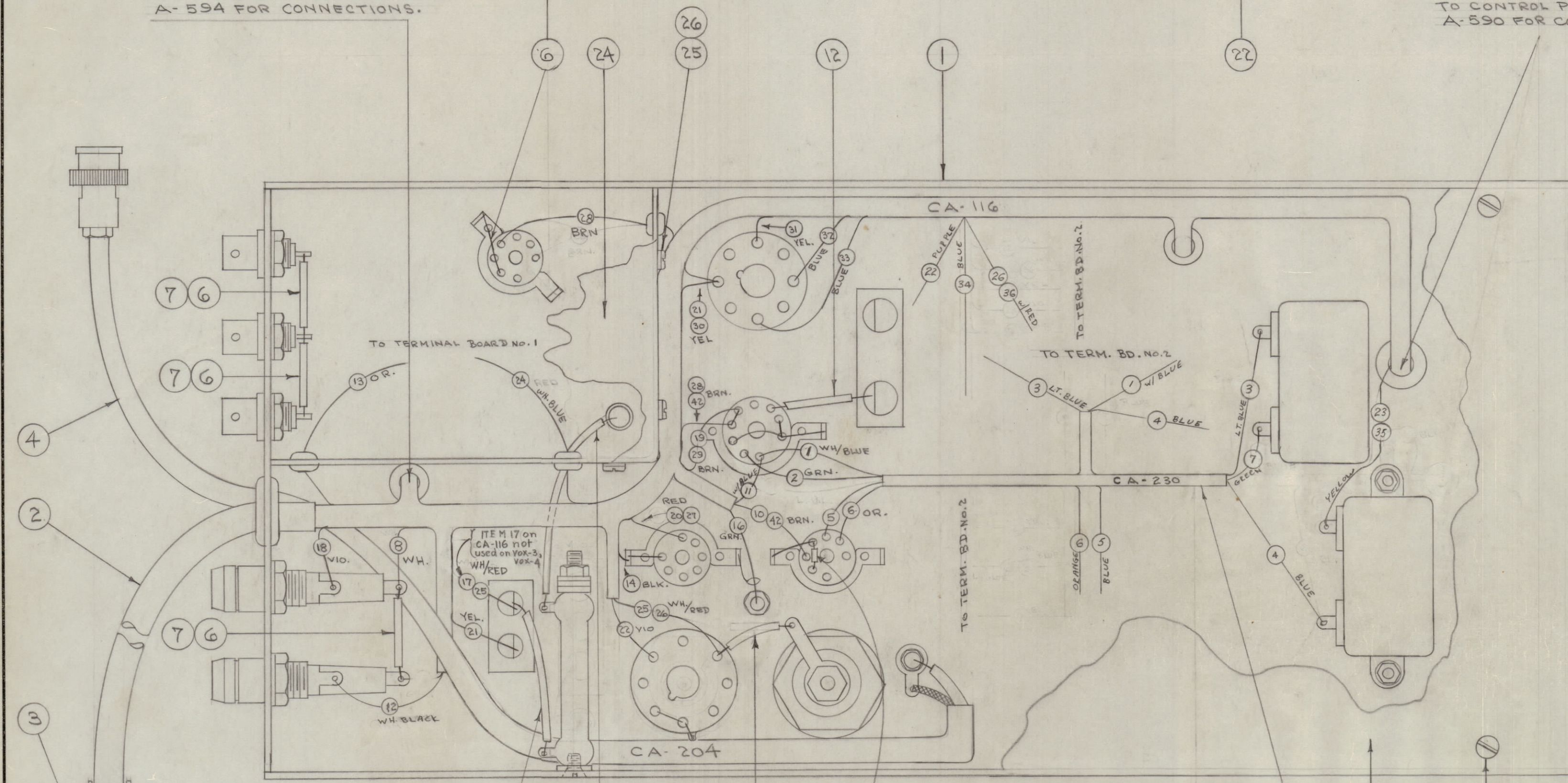
IF IT IS FOUND DESIRABLE TO CHANGE ANY TOLERANCE OR OTHER DETAIL SPECIFIED ON THIS DRAWING NOTIFY THE PURCHASER PROMPTLY.  
 MAXIMUM ALLOWABLE TOLERANCES HAVE BEEN DETERMINED AND DEVIATIONS WILL BE CAUSE FOR REJECTION. REMOVE ALL BURRS AND SHARP EDGES

NOTE:  
 1- THIS DWG. SHOWS THOSE COMPONENTS OR THAT HARDWARE NECESSARY FOR CABLE, JUMPER OR TERMINAL BOARD CONNECTIONS.  
 2- LIPS HAVE BEEN OMITTED FOR CLARITY.  
 3- WIRE NOS. SHOWN CORRESPOND TO WIRE NOS. ON CABLE DWGS.



TO XTAL-SWITCH SEE DWG A-594 FOR CONNECTIONS.

TO CONTROL PANEL, SEE DWG. A-590 FOR CONNECTIONS.



WIRING DETAIL TB-1

NOTICE TO PERSONS RECEIVING THIS DRAWING

THE TECHNICAL MATERIEL CORPORATION claims proprietary right in the material disclosed hereon. This drawing is issued in confidence for engineering information only and may not be reproduced or used to manufacture anything shown herein without permission from THE TECHNICAL MATERIEL CORPORATION to the user. This drawing is loaned for mutual assistance and is subject to recall at any time.

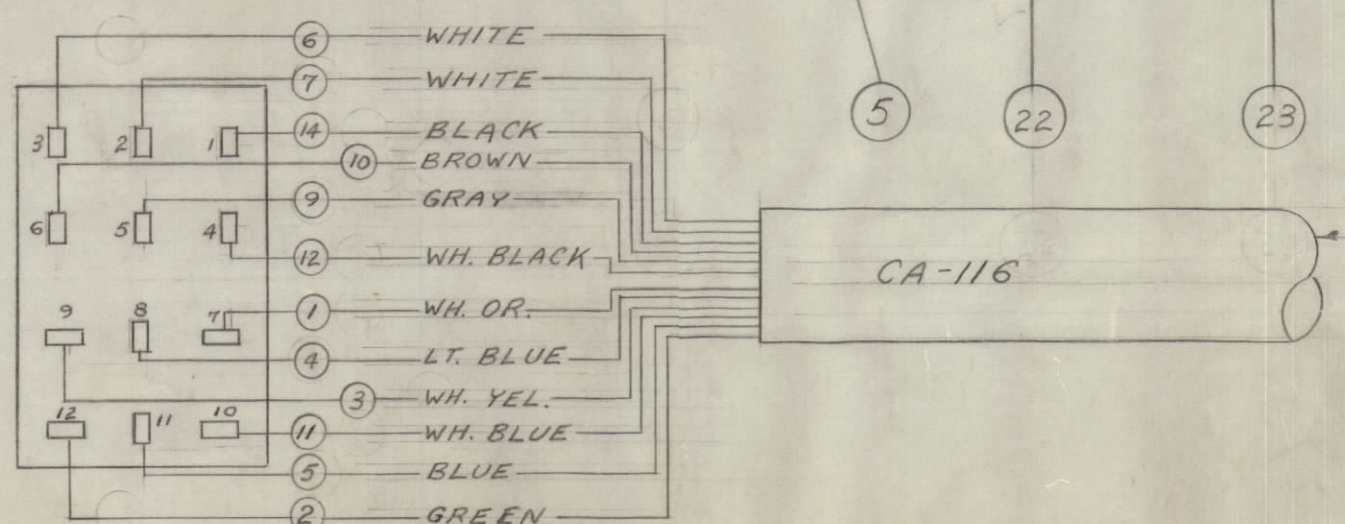
Property of:  
 THE TECHNICAL MATERIEL CORPORATION  
 MAMARONECK, NEW YORK

1	VOX 4				
1	VOX 3				
1	VOX 2				
1	VOX-1				
1	VOX	101	A-426	12-23-53	
REQ. PER UNIT	MODEL	PROJECT NO.	ASSY. NO.	DATE	

X 32	PX-100-1-.330	INSULATION, SLEEVING (BLK.)
X 31	PX-104-2-022	INSULATED, SLEEVING (YELLOW)
3 1/2 30	MWG22(7)U92	CABLE, INSULATED, (WH. RED)
5" 29	MWG22(7)U92	CABLE, INSULATED (WH. RED)
X 28	BS-100	SOLDER, SOFT (ALL CONNECTIONS)
1 1/2 27	PX-104-1-.118	INSULATION, SLEEVING (BLK.)
4	LWE04MRN	WASHER, LOCK
4	SCBS0440BNA	SCREW, MACHINE
1	MS-300	SHIELD COVER, P.S.
6	SCFS0440BNA	SCREW, MACHINE
1	MS-288	COVER, BOTTOM
2	SCFS0632BNG	SCREW, MACHINE
2	SCBS0632BNG	" " "
1	A-920	TERM. BD. NO. 2 ASSY.
1	A-927	" " " " " " " "
4	LWE06MRN	WASHER, LOCK
2	SCBS0632BNA	SCREW, MACHINE
2	LWS10MRN	WASHER, LOCK
2	SCBS1032BNG	SCREW, MACHINE
1	MS-298	GUARD, TRANS.
X 12	MWG22(7)U5	CABLE, INSULATED (GRN.)
X 11	PX-104-9-.022	INSULATION, SLEEVING (VIO.)
X 10	PX-104-7-.022	" " " (GREY)
X 9	PX-104-1-.022	" " " (BLK.)
X 8	PX-104-3-.022	" " " (RED)
X 7	PX-104-5-.022	" " " (BRN.)
X 6	WL-100-7	WIRE, BUSS BAR 22GA.
1	CA-115	CABLE ASSY.
1	CA-230	" " "
1	PL-102-1	CONNECTOR, MALE
1	CA-116	CABLE ASSY.
1	A-626	HWDE. & COMP. ASSY.

REQ. ITEM	PART NO.	DESCRIPTION	SYMBOL
		THE TECHNICAL MATERIEL CORP.	
		MAMARONECK, NEW YORK	
		CABLE & TERM. BD. ASSY.	
		P.S. CHASSIS	YOX
		CADD 12-23-53	
		DRAWN	WOC
		ELEC. DES. APP.	
		MECH. DES. APP.	
		CHECKED	ATT
		FINAL APPROVAL	
			A-629 B

B	3	NOTE ON WIRE 17 ADDED	9-5-51	5173	G.D.L.	RJ	RM
	2	ITEM 25 & ITEM 30 WAS 3813/2209					
	1	ITEM 12 WAS 3813/2209					
A	1	REVISED AS PER DWG 5258	5-22-51		PC		100
ISSUE ITEM	CHANGED FROM	DATE	CN. NO.	DRAFTS	CHECKER	ENG. APP.	
TOLERANCES							
SCALE:							
ALL OTHERS	DEC. DIM. ±	DRILL, PUNCH, COMMERCIAL STOCK					
	FRACTIONAL DIM. ±	SIZES AND MANUFACTURERS					
	ANGULAR DIM. ±	TOLERANCES ARE NOT INCLUDED.					



A-629 B