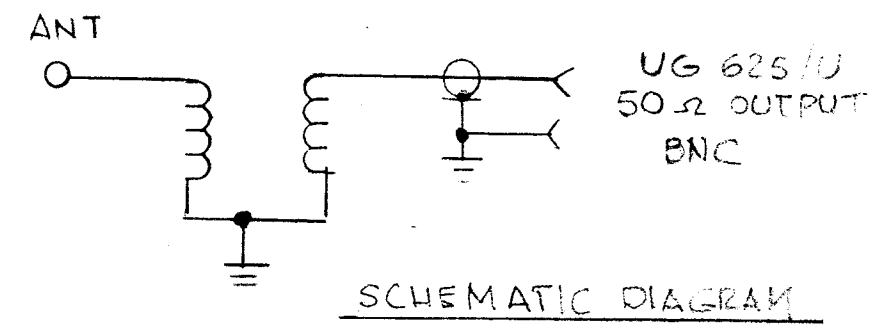
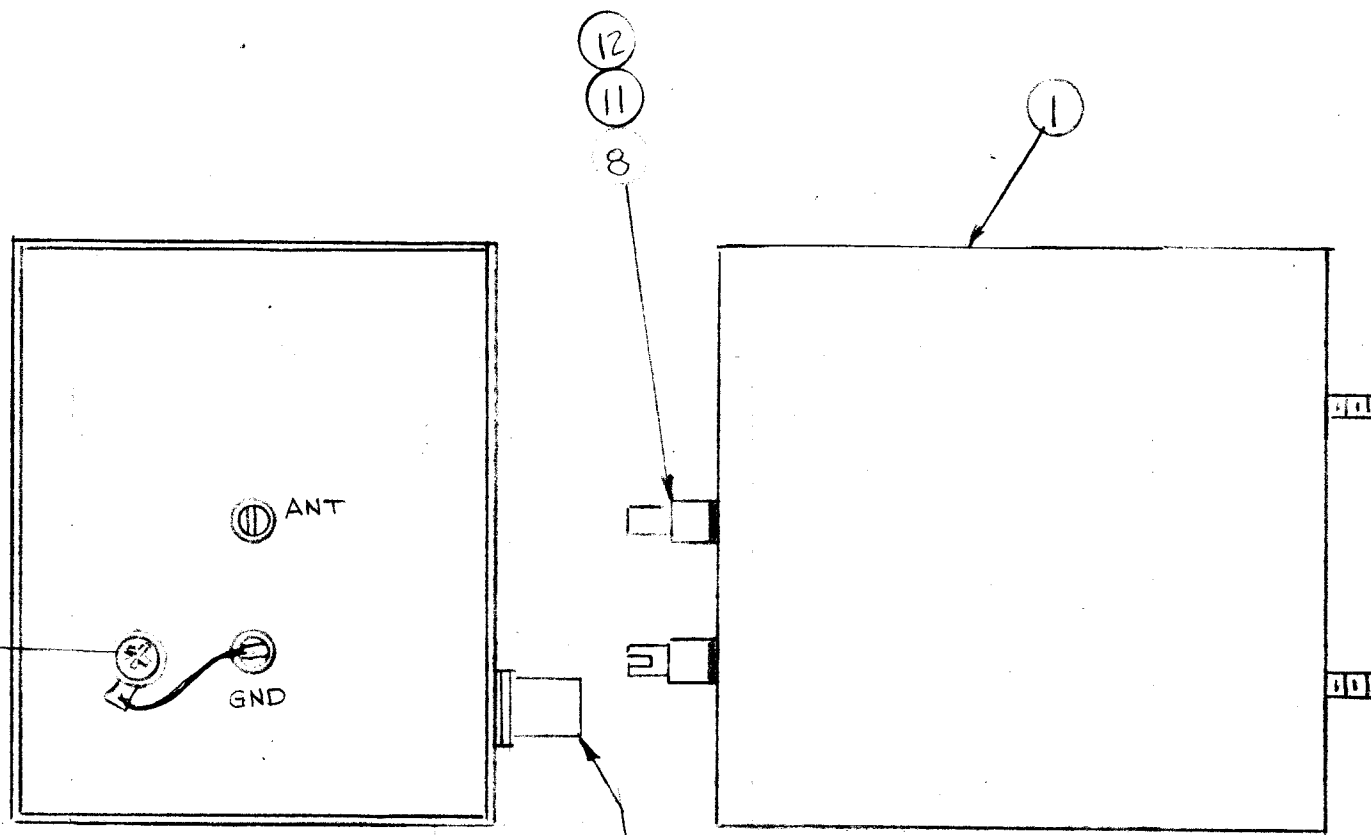
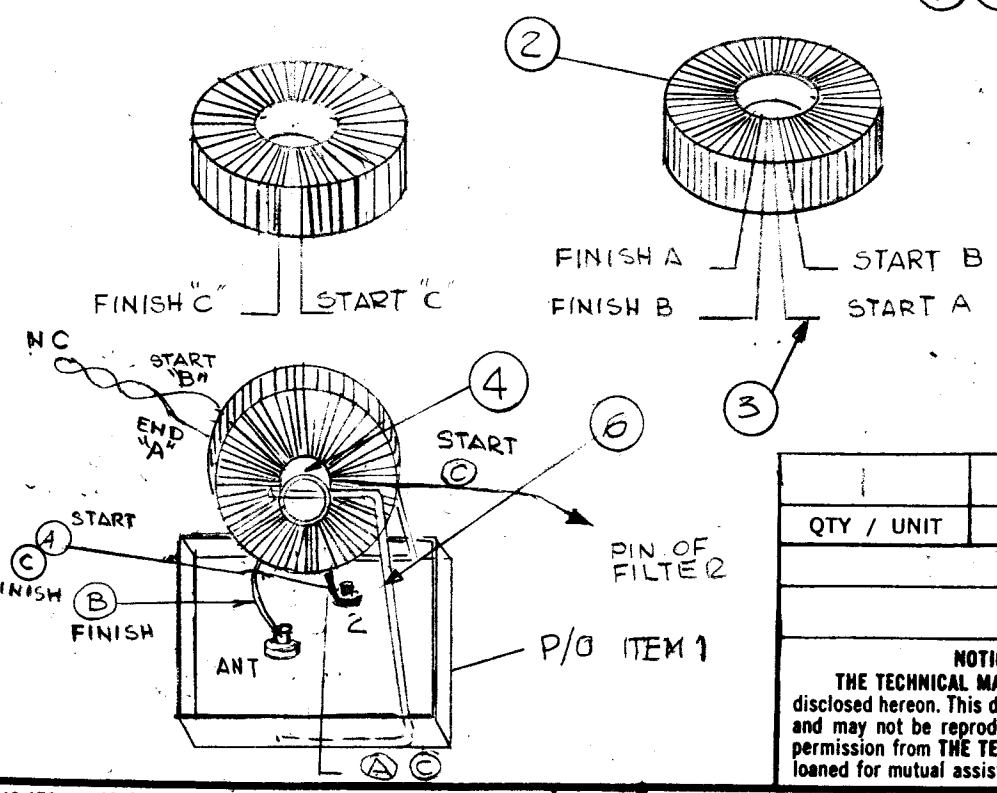


REVISIONS					DATE	APPROVED
E.M.N. NO.	DRAFT	CHKD	ZONE	LTR	DESCRIPTION	



REQ'D	ITEM	PART NUMBER	DESCRIPTION	SYM.
1	15	NT 0632BNT	NUT, HEX	
1	14	TE 111-	SOLDER, LUG	
1	13	SCBP 0632BN4	SCREW MACHINE	
2	12	NT 0440BN	NUT, HEX	
2	11	TE 112-1	TERMINAL, LOCKING, CRIM TYPE	
1	10	TE 111-2	SOLDER, LUG	
2	9	W102-9	WASHER, FIBER SHOULDER	
2	8	TE 101-2	SLOTTED BUSHING	
1	7	UG 625/U	NBC CONNECTOR	
2	6	MS 10259	STABILIZER	
1	5	NP 493	EMBLEM TMC	
1	4	CE 10014	COIL FORM	
X	3	WI 10099-1	WIRE NO. 30 DCC BRIDGEPORT INSULATED WIRE	
1	2	CE 10007	CORE MN 31	
1	1	BX 241	CASE TRANSFORMER	



STEP 1
 BIFILAR WINDING (2 WIRES SIDE BY SIDE)
 2 X 34 TURNS #30 DCC WIRE DISTRIBUTED
 OVER WHOLE CORE, CONTINUE WITH SAME
 TWO WIRES WINDING 2 X 6 TURNS EVENLY
 DISTRIBUTED OVER WHOLE CORE AND FINISH
 WITH RADIO CEMENT

STEP 2
 WIND 1 X 15 TURNS #30 DCC WIRE EVENLY
 DISTRIBUTED OVER THE WHOLE
 CORE, COAT WINDINGS W/ RADIO CEMENT

QTY / UNIT	MODEL USED ON	ASSY NO.
	VAA-1	
APPLICATION		
CODE		

NOTICE TO PERSONS RECEIVING THIS DRAWING
 THE TECHNICAL MATERIEL CORPORATION claims proprietary right in the material disclosed hereon. This drawing is issued in confidence for engineering information only and may not be reproduced or used to manufacture anything shown hereon without permission from THE TECHNICAL MATERIEL CORPORATION to the user. This drawing is loaned for mutual assistance and is subject to recall at any time.

UNLESS OTHERWISE SPECIFIED DIMENSIONS ARE IN INCHES AND INCLUDE CHEMICALLY APPLIED OR PLATED FINISHES		FINAL APPROVAL	DATE
DECIMALS .X ± .05 .XX ± .01 .XXX ± .005	FRACTIONS 1/64 ANGLES 0° .30'	<i>GDL</i>	7/8/72
MATERIAL		ELECT. DES.	DATE
FINISH		CHECKED	DATE
		DRAWN	DATE
		<i>GDL</i>	4-28-92

LIST OF MATERIAL			
THE TECHNICAL MATERIEL CORP. MAMARONECK, NEW YORK			
TRANSFORMER TR 218 (LF) ASSY			
SIZE	CODE IDENT. NO.	DWG NO.	ISSUE
B	82679	A 5984	A
SCALE	SHEET		OF