

5

4

3

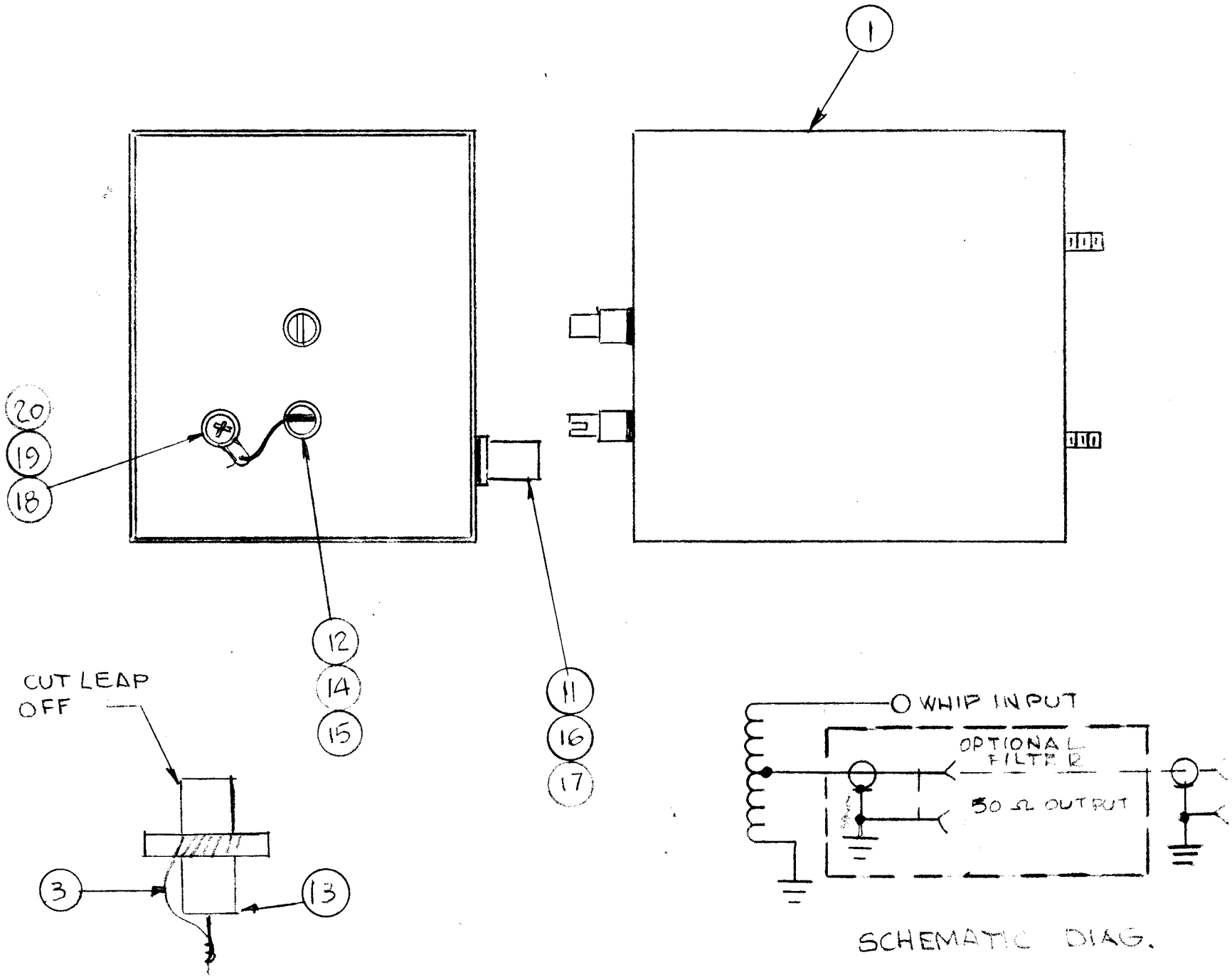
2

1

REVISIONS						DATE	APPROVED
E.M.N. NO.	DRAFT	CHKD	ZONE	LTR	DESCRIPTION		
					Δ DWG REVISED & UPDATED	5-19-92	

D

D



CUT LEAP OFF

SCHEMATIC DIAG.

REQ'D	ITEM	PART NUMBER	DESCRIPTION	SYM.
X	21	BS100	SOLDER, SOFT	
1	20	NT0632BN	NUT, HEX	
1	19	TE111	SOLDER, LUG	
1	18	SCBP0632BN	SCREW MACHINE	
2	17	WA102-9	WASHER, FIBER SHOULDER	
1	16	TE111-2	SOLDE, LUG	
2	15	NT04405N	NUT, HEX.	
2	14	TE112-1	TERMINAL CRIMP TYPE	
1	13	CE	COIL, FORM	
2	12	TE101-2	SLOTTED BUSHING	
1	11	UG 625 /U	BNC CONNECTOR	
X	10	PX 104-1-053	INSULATION SLEEVING (BLK)	
X	9	PX 104-3-053	INSULATION SLEEVING (RED)	
X	8	PX 104-2-053	INSULATION SLEEVING (YELL)	
1	7	NP 117	TMC INCHG (STAMP)	
1	6	CN100-3	CAPACITOR, FIXED	
X	5	GL106	POTTING, COMPOUND	
X	4	BS 100	SOLDER SOFT	
X	3	WI102-9	WIRE ELECT. MAGNETIC	
1	2	CI104	CORE	
1	1	BX 241	CASE TRANSFORMER	

LIST OF MATERIAL

C

C

B

B

A

A

QTY / UNIT	VAA-2	MODEL USED ON	ASS'Y NO.
APPLICATION			
	CODE		

NOTICE TO PERSONS RECEIVING THIS DRAWING
 THE TECHNICAL MATERIEL CORPORATION claims proprietary right in the material disclosed hereon. This drawing is issued in confidence for engineering information only and may not be reproduced or used to manufacture anything shown hereon without permission from THE TECHNICAL MATERIEL CORPORATION to the user. This drawing is loaned for mutual assistance and is subject to recall at any time.

UNLESS OTHERWISE SPECIFIED DIMENSIONS ARE IN INCHES AND INCLUDE CHEMICALLY APPLIED OR PLATED FINISHES		FINAL APPROVAL <i>DR</i>	DATE <i>4/28/92</i>
DECIMALS .X ± .05 .XX ± .01 .XXX ± .005	FRACTIONS 1/64 TOLS. ANGLES 0° .30'	MECH. DES.	DATE
MATERIAL		ELECT. DES.	DATE
FINISH		CHECKED	DATE
		DRAWN <i>G.D.L.</i>	DATE <i>4-28-92</i>

THE TECHNICAL MATERIEL CORP. MAMARONECK, NEW YORK			
TRANSFORMER TR 219 (HF) ASSY			
SIZE	CODE IDENT. NO.	DWG NO.	ISSUE
B	82679	A 5883	A
SCALE	SHEET		OF