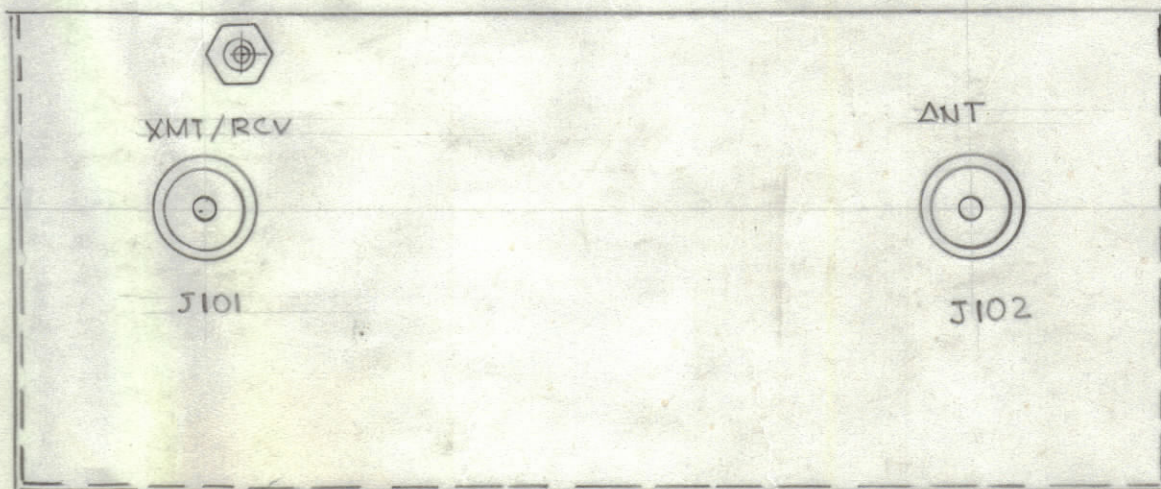
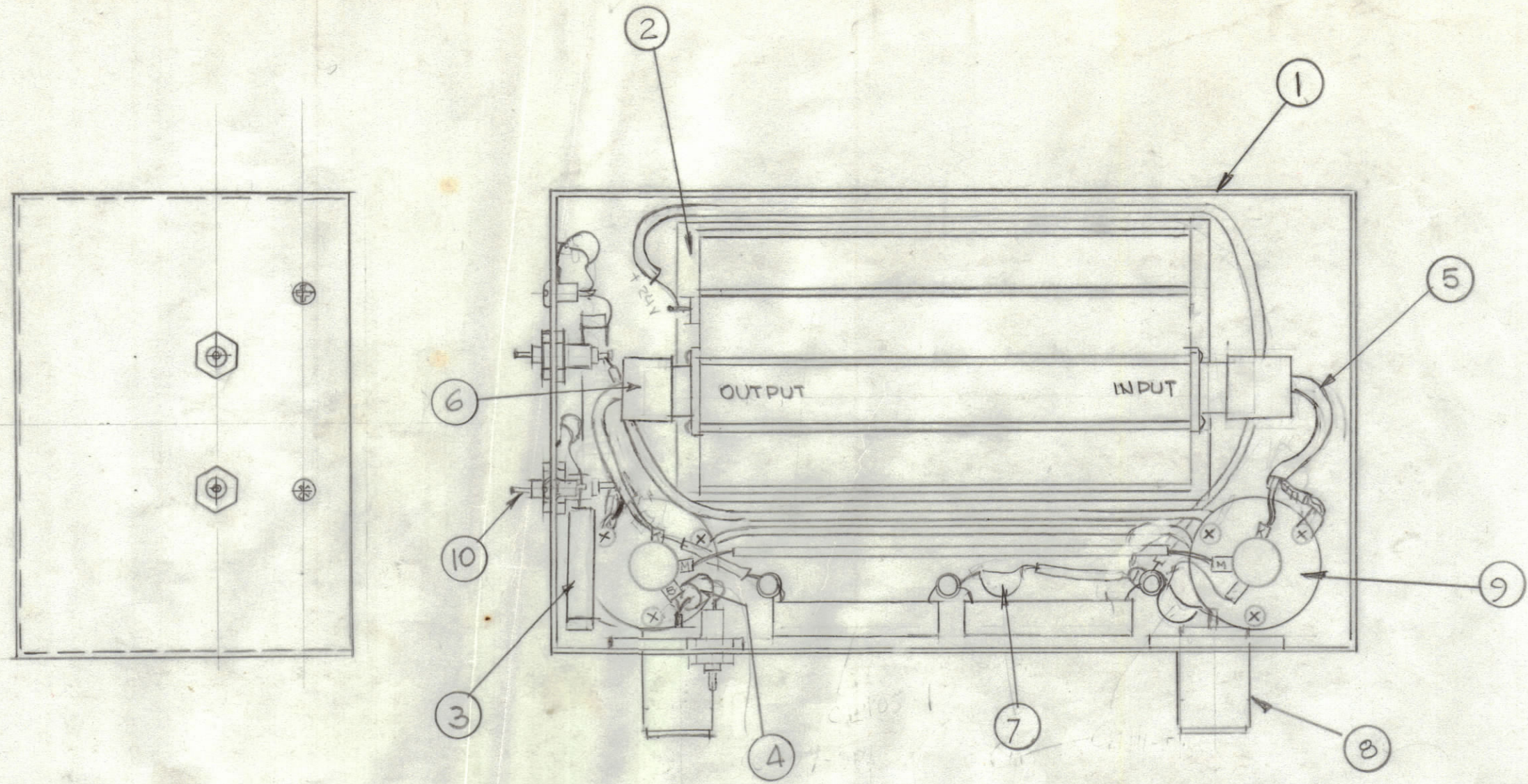


REVISIONS						
ZONE	LTR	DESCRIPTION	DATE	E.M.N.NO	DRAFT	CHKD APPD
	Ø	ORIGINAL RELEASE FOR PRODUCTION	3-20-91			G.D.L.



QTY. REQ.	ITEM	PART NO.	DESCRIPTION	SYMBOL
3	10	TE114-2	TERM. FEED THRU	
2	9	RL128	VACUUM RELAY	
2	8	UG 58	CONNECTOR REC	
	7	CM III-F102G	CAPACITOR	
1	6	CA1904-2	CABLE COAX.	
1	5	CA1904-1	CABLE COAX.	
1	4	CC109-3PF	CAPACITOR	
4	3	CL105-1	CHOKE, RF	
1	2	AX5266	MINI CIRCUITS ZHL-1A	
1	1	MS7250	BX 238 MODIFIED	

LIST OF MATERIAL

1	PAL-16	
QTY / UNIT	MODEL USED ON	ASS'Y NO.
APPLICATION		
	CODE	

UNLESS OTHERWISE SPECIFIED DIMENSIONS ARE IN INCHES AND INCLUDE CHEMICALLY APPLIED OR PLATED FINISHES	FINAL APPROVAL <i>G.D.L.</i>	DATE 2/2/91
TOLERANCES ON	M.ECH. DES.	DATE
DECIMALS .X ± .05 .XX ± .01 .XXX ± .005	ELECT. DES.	DATE
FRACTIONS ± 1/64 ANGLES ± 0° 30'	CHECKED	DATE
	DRAWN G.D.L.	DATE 3-20-91

THE TECHNICAL MATERIEL CORP. MAMARONECK, NEW YORK			
ASSY AMPLIFIER			
SIZE	CODE IDENT. NO.	DWG NO.	ISSUE
C	82679	A 5877	Ø
SCALE	SHEET		OF

NOTICE TO PERSONS RECEIVING THIS DRAWING
THE TECHNICAL MATERIEL CORPORATION claims proprietary right in the material disclosed hereon. This drawing is issued in confidence for engineering information only and may not be reproduced or used to manufacture anything shown hereon without permission from THE TECHNICAL MATERIEL CORPORATION to the user. This drawing is loaned for mutual assistance and is subject to recall at any time.

A5877