

5

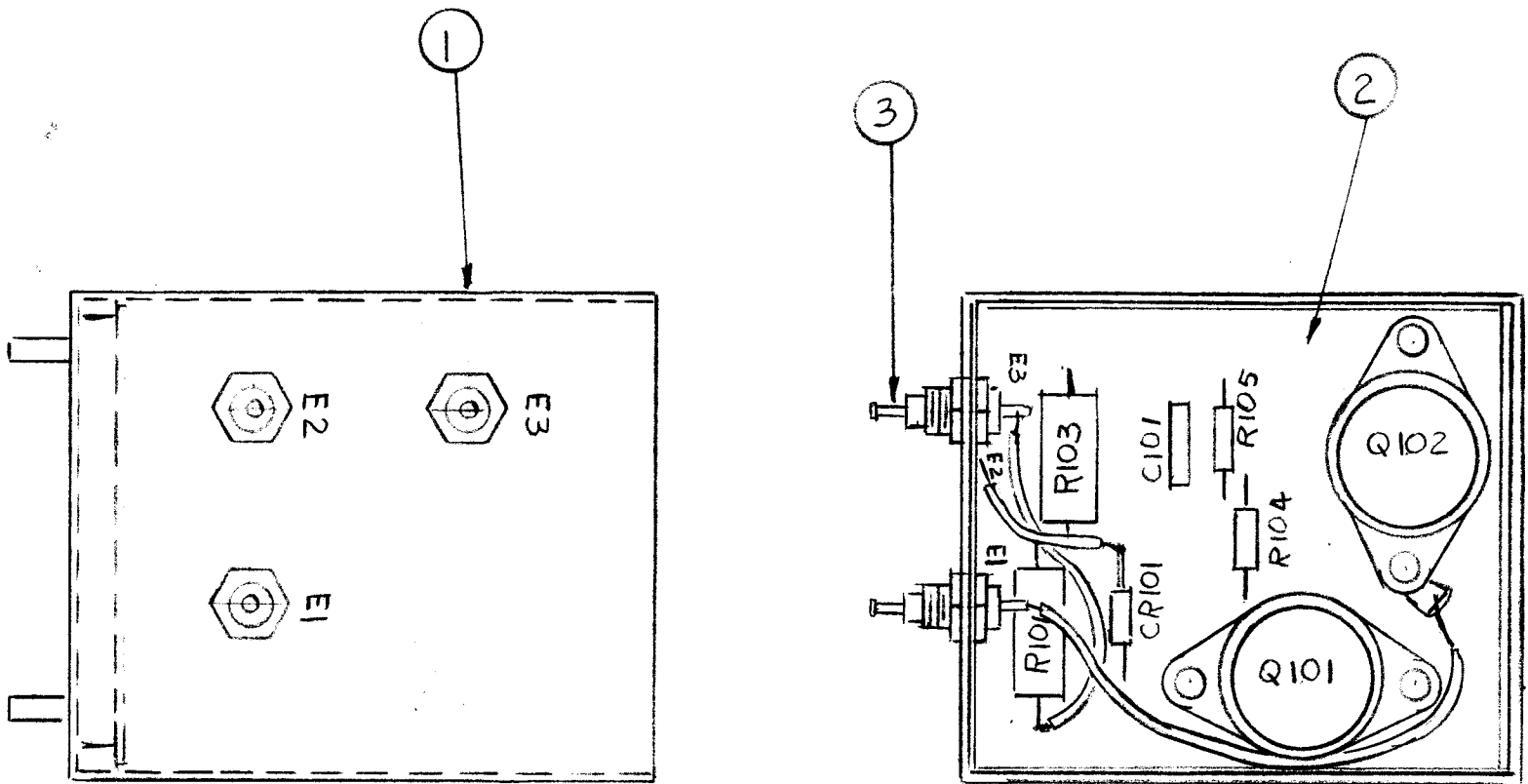
4

3

2

1

REVISIONS							
EM.N NO.	DRAFT	CHKD	ZONE	LTR	DESCRIPTION	DATE	APPROVED
	G.D.L			Ø	ORIGINAL RELEASE FOR PRODUCTION	3-19-91	



REQ'D	ITEM	PART NUMBER	DESCRIPTION	SYM.
3	3	TE11A-2	TERMINAL FEED THRU	
1	2	A5871	PC BOARD ASSY.	
1	1	MS 7249	CASE HF CONTROL	

LIST OF MATERIAL

1	PAL-15	
QTY / UNIT	MODEL USED ON	ASS'Y NO.
APPLICATION		
	CODE	

**NOTICE TO PERSONS RECEIVING THIS DRAWING**  
 THE TECHNICAL MATERIEL CORPORATION claims proprietary right in the material disclosed hereon. This drawing is issued in confidence for engineering information only and may not be reproduced or used to manufacture anything shown hereon without permission from THE TECHNICAL MATERIEL CORPORATION to the user. This drawing is loaned for mutual assistance and is subject to recall at any time.

UNLESS OTHERWISE SPECIFIED DIMENSIONS ARE IN INCHES AND INCLUDE CHEMICALLY APPLIED OR PLATED FINISHES		FINAL APPROVAL <i>G.D.L</i>	DATE 3/1/91
DECIMALS .X ± .05 .XX ± .01 .XXX ± .005	FRACTIONS 1/64 ANGLES 0° .30'	ELECT. DES.	DATE
MATERIAL		CHECKED	DATE
FINISH		DRAWN G.D.L	DATE 1-4-91

THE TECHNICAL MATERIEL CORP. MAMARONECK, NEW YORK			
ASSY, RF CONTROL			
SIZE B	CODE IDENT. NO. 82679	DWG NO. A5872	ISSUE Ø
SCALE	SHEET		OF