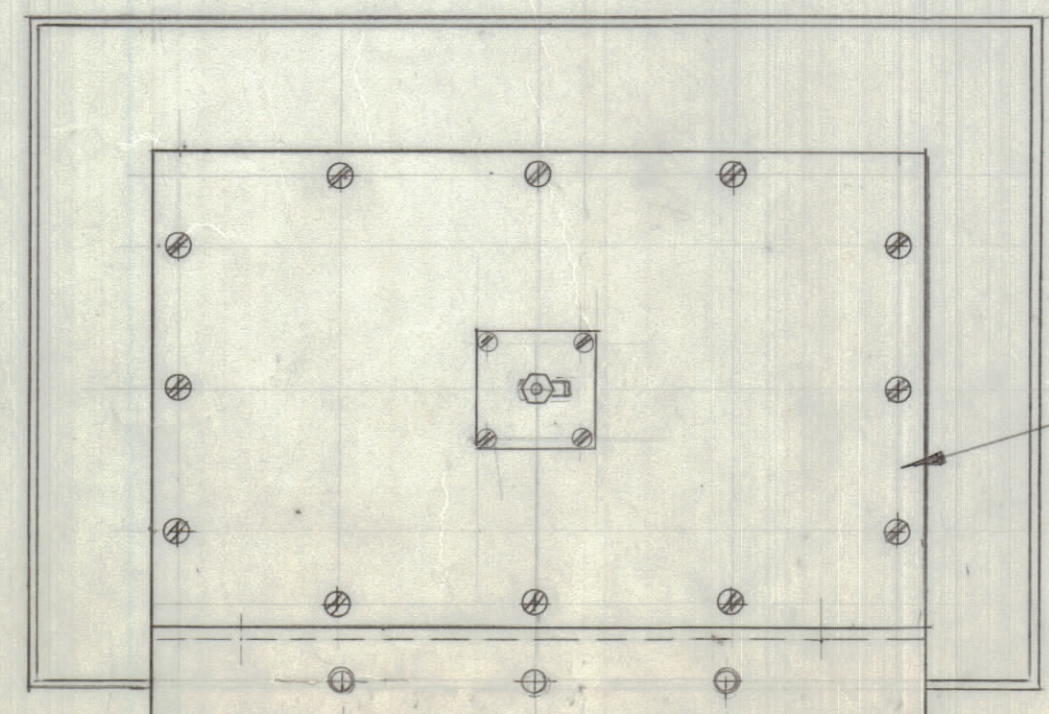
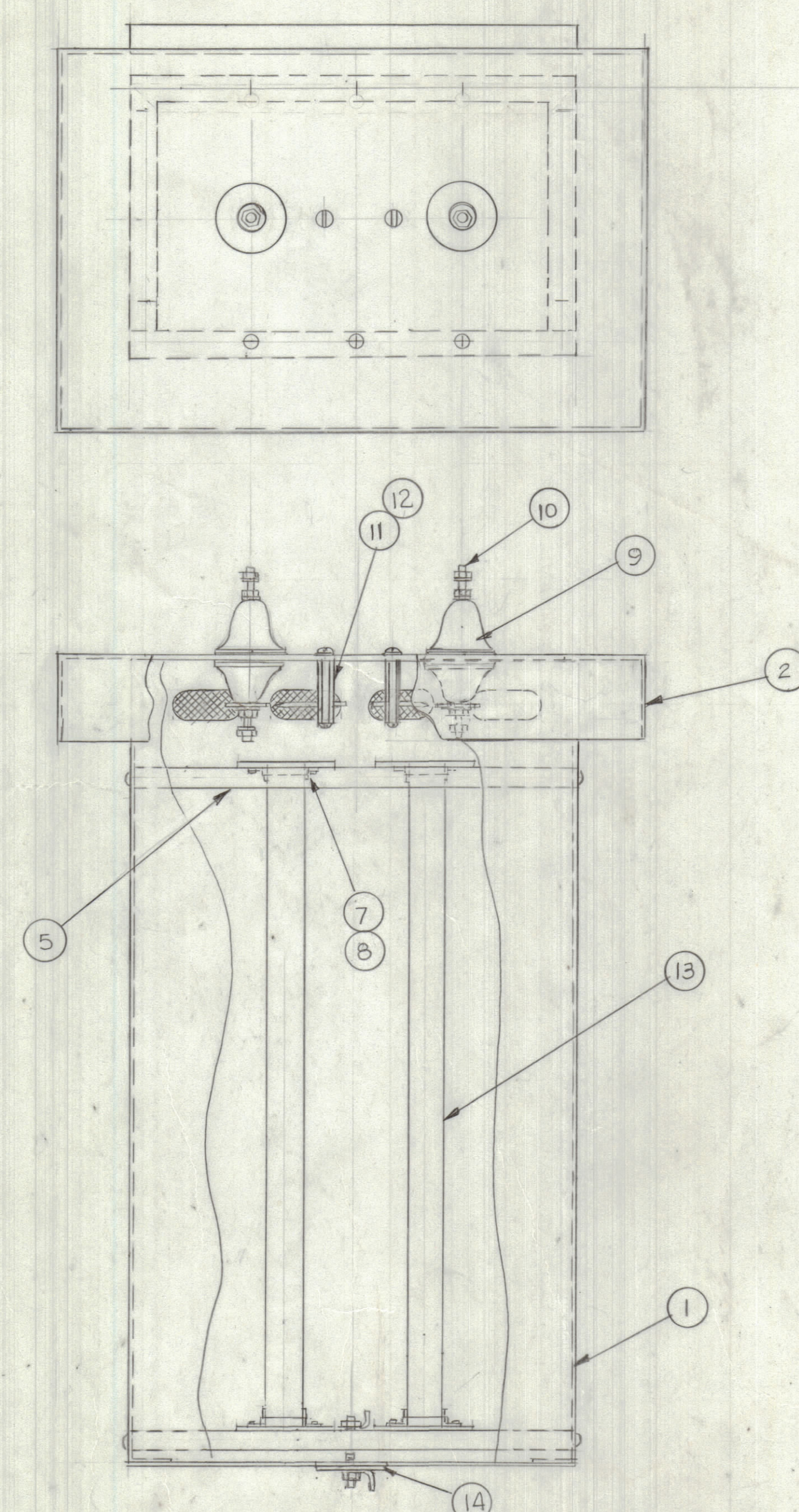
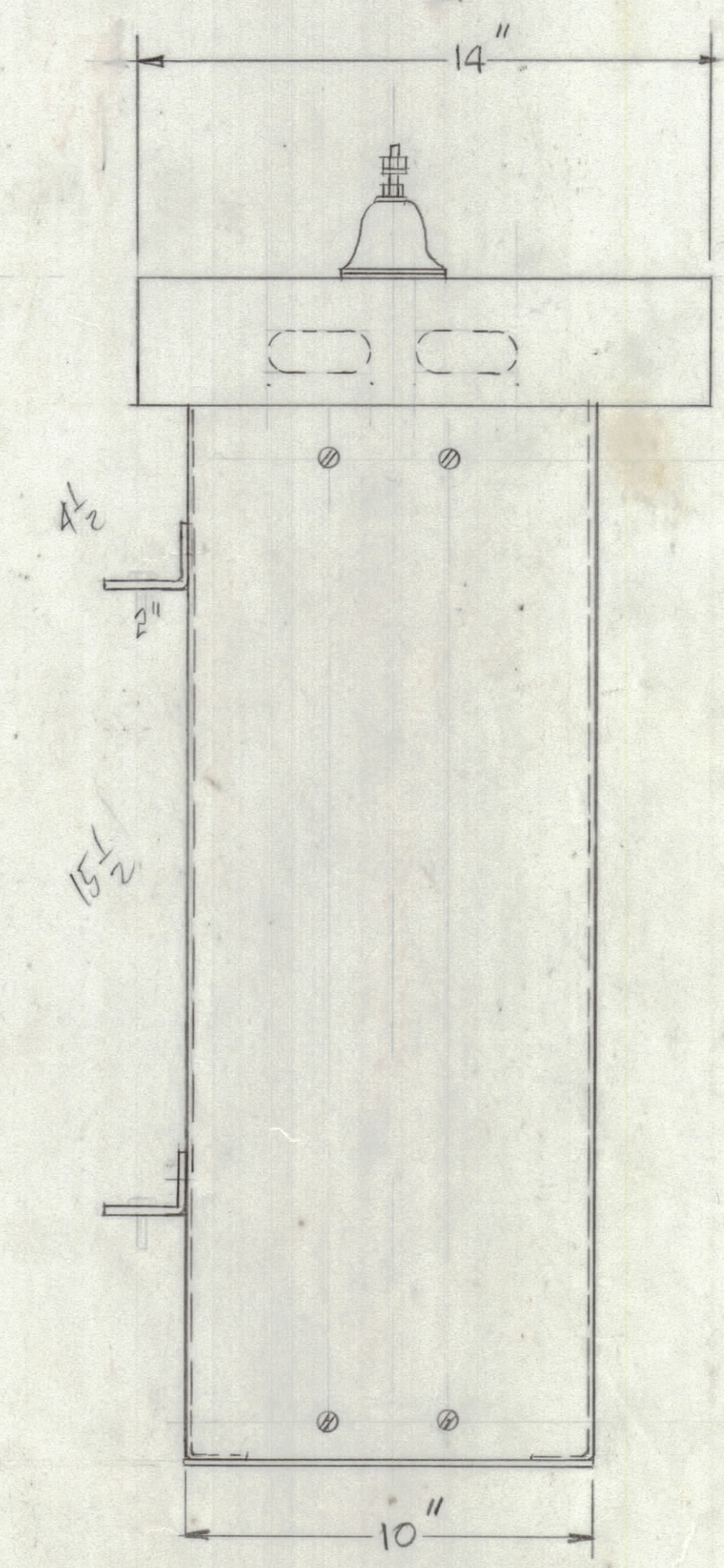
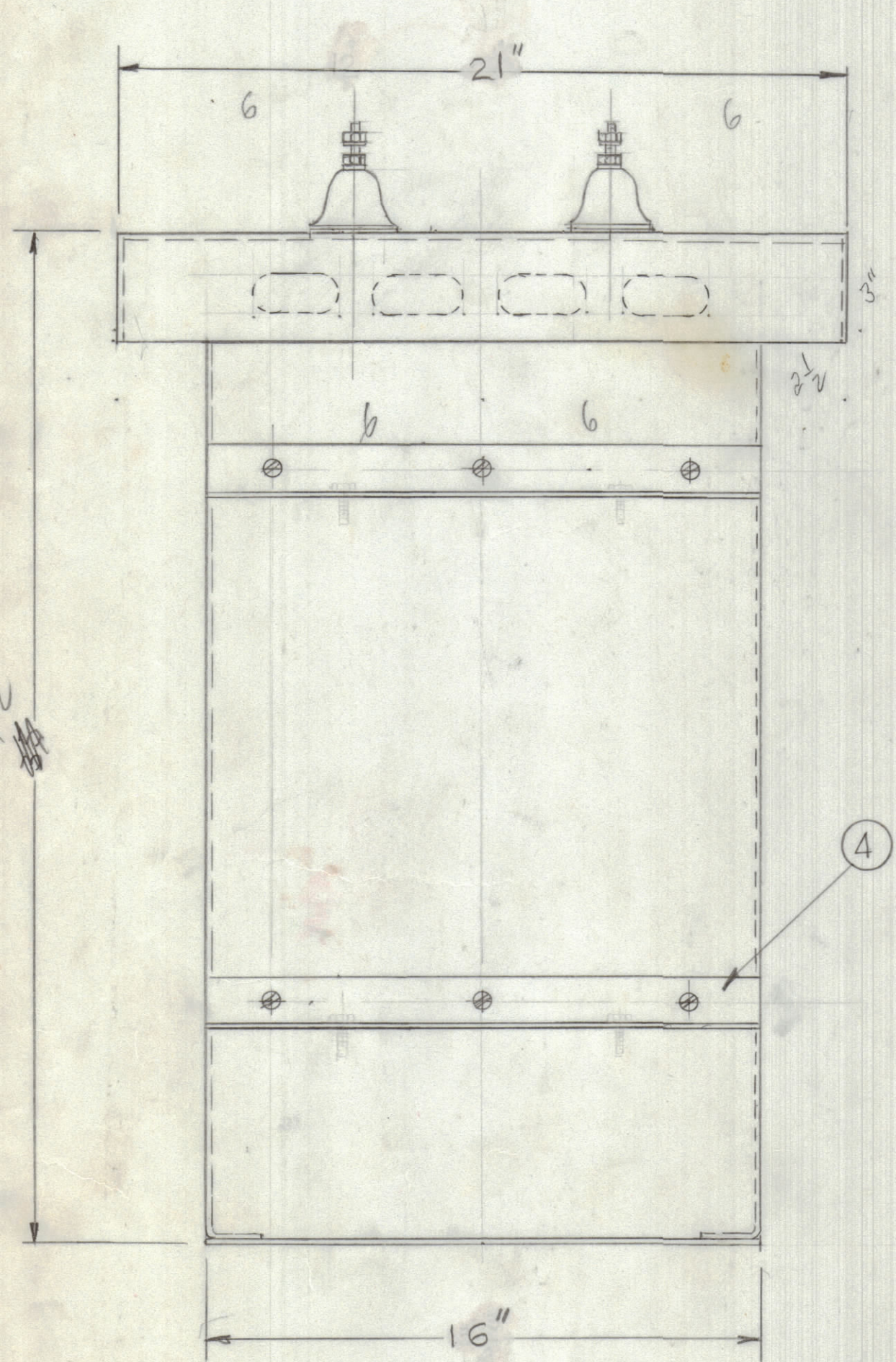


REVISIONS							
E.M.N.O.	DRAFT	CHKD	ZONE	LTR	DESCRIPTION	DATE	APPROVED
	GDL			Ø	ORIGINAL RELEASE FOR PRODUCTION	3-20-91	



QTY. REQ.	ITEM	PART NO.	DESCRIPTION	SYMBOL
1	14	MS7231	PLATE MTG. GROUND	
2	13	RR 142-5	RESISTOR FIXED	
2	12	PM 103	SPARK ROD	
2	11	PM721-3-1.75	POST SPARK ROD	
2	10	A100	STUD ASSY	
2	9	NS115	CAP INSULATING	
4	8	CU129-5	CLAMP HOSE	
4	7	MS7210	RESISTOR HOLDER	
4	6	PX1307	PLATE MTG RESISTOR	
2	5	PX1306	SUPPORT RESISTOR	
2	4	MS7229	BRACKET MTG CASE	
1	3	MS7228-2	CASE TER-500	
1	2	MS7228-2	CASE TER-500	
1	1	MS7228-1	CASE TER-1K	

QTY. REQ.	ITEM	PART NO.	DESCRIPTION	SYMBOL
-----------	------	----------	-------------	--------

UNLESS OTHERWISE SPECIFIED DIMENSIONS ARE IN INCHES AND INCLUDE CHEMICALLY APPLIED OR PLATED FINISHES	FINAL APPROVAL <i>GDL</i>	DATE 3/5/90
TOLERANCES ON DECIMALS .X ± .05 .XX ± .01 .XXX ± .005	MECH. DES.	DATE
FRACTIONS = 1/64 ANGLES ± 0° - 30'	ELECT. DES.	DATE
	CHECKED	DATE
	DRAWN G.D.L.	DATE 3-5-90

THE TECHNICAL MATERIEL CORP.  
MAMARONECK, NEW YORK

CASSY TER-1K & 2K

QTY / UNIT	MODEL USED ON	ASSY NO.
APPLICATION		
CODE		

NOTICE TO PERSONS RECEIVING THIS DRAWING  
THE TECHNICAL MATERIEL CORPORATION claims proprietary right in the material disclosed hereon. This drawing is issued in confidence for engineering information only and may not be reproduced or used to manufacture anything shown hereon without permission from THE TECHNICAL MATERIEL CORPORATION to the user. This drawing is loaned for mutual assistance and is subject to recall at any time.

MATERIAL	SIZE	CODE	IDENT NO.	DWG NO.	ISSUE
FINISH	D	82679	A 5870		Ø

SCALE	1/4"	SHEET	OF
-------	------	-------	----