

5

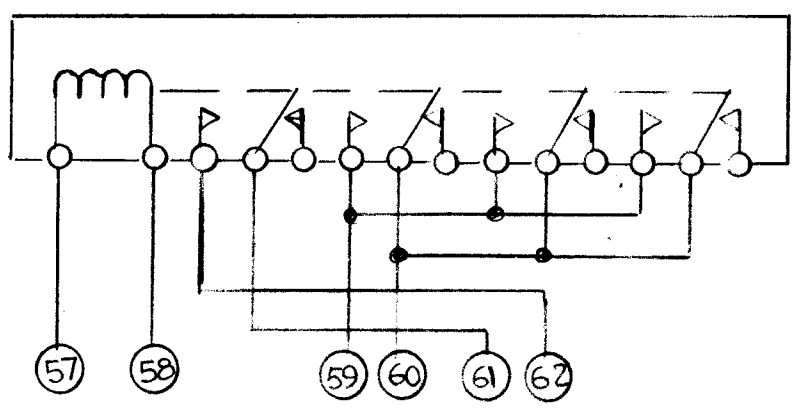
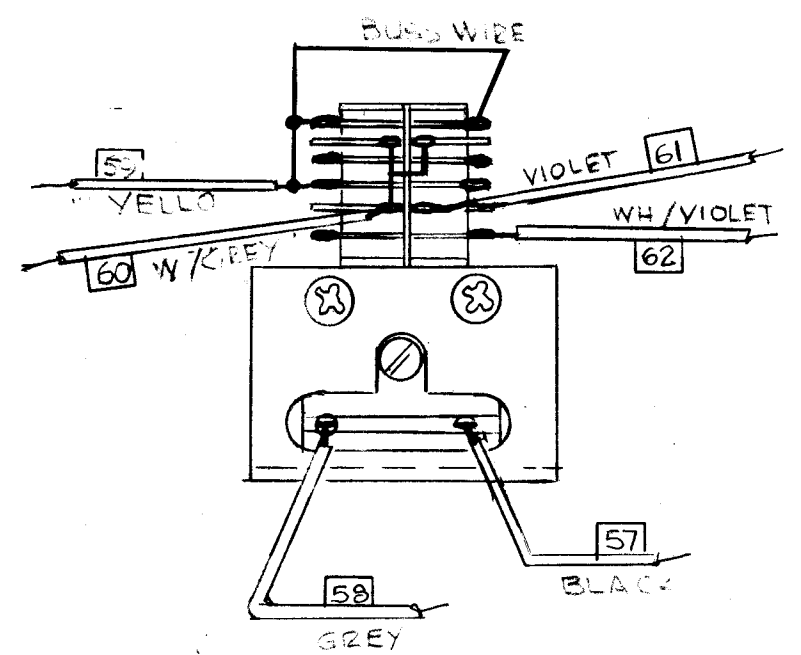
4

3

2

1

REVISIONS							
E.M.N. NO.	DRAFT	CHKD	ZONE	LTR	DESCRIPTION	DATE	APPROVED



REQ'D	ITEM	PART NUMBER	DESCRIPTION	SYM.
X	6	WL 100-6	WIRE, BUSS #20	
4	5	52FPO632BNS	SCREW MACHINE	
1	4	M52020	BOARD RELAY MTG.	
X	3	BS100	SOLDER	
1	2	CA 331	CABLE	
1	1	RL 207	RELAY, ARMATURE	

LIST OF MATERIAL

1	GPT-40K	
QTY / UNIT	MODEL USED ON	ASS'Y NO.
APPLICATION		
	CODE	

**NOTICE TO PERSONS RECEIVING THIS DRAWING**  
 THE TECHNICAL MATERIEL CORPORATION claims proprietary right in the material disclosed hereon. This drawing is issued in confidence for engineering information only and may not be reproduced or used to manufacture anything shown hereon without permission from THE TECHNICAL MATERIEL CORPORATION to the user. This drawing is loaned for mutual assistance and is subject to recall at any time.

UNLESS OTHERWISE SPECIFIED DIMENSIONS ARE IN INCHES AND INCLUDE CHEMICALLY APPLIED OR PLATED FINISHES

DECIMALS: .X ± .05, .XX ± .01, .XXX ± .005  
 FRACTIONS: 1/64  
 TOLS.: ANGLES 0°-30'

MATERIAL  
 FINISH

FINAL APPROVAL: <i>GDB</i>	DATE: 5/15/90
MECH. DES. <i>GDL</i>	DATE: 5/15/90
ELECT. DES. <i>J.I</i>	DATE: 5/15/90
CHECKED	DATE
DRAWN: <i>GDL</i>	DATE: 6-21-90

THE TECHNICAL MATERIEL CORP.  
 MAMARONECK, NEW YORK

CROWBAR RELAY ASSY

SIZE: B	CODE IDENT. NO.: 82679	DWG NO.: A 5869	ISSUE
SCALE	SHEET OF		

5

4

3

2

1