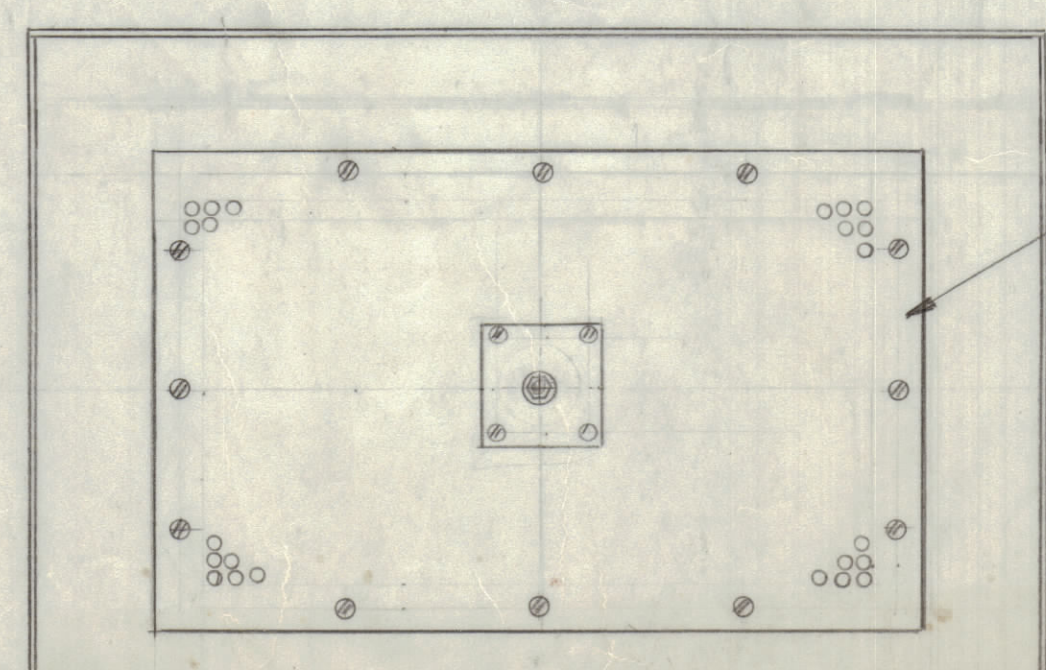
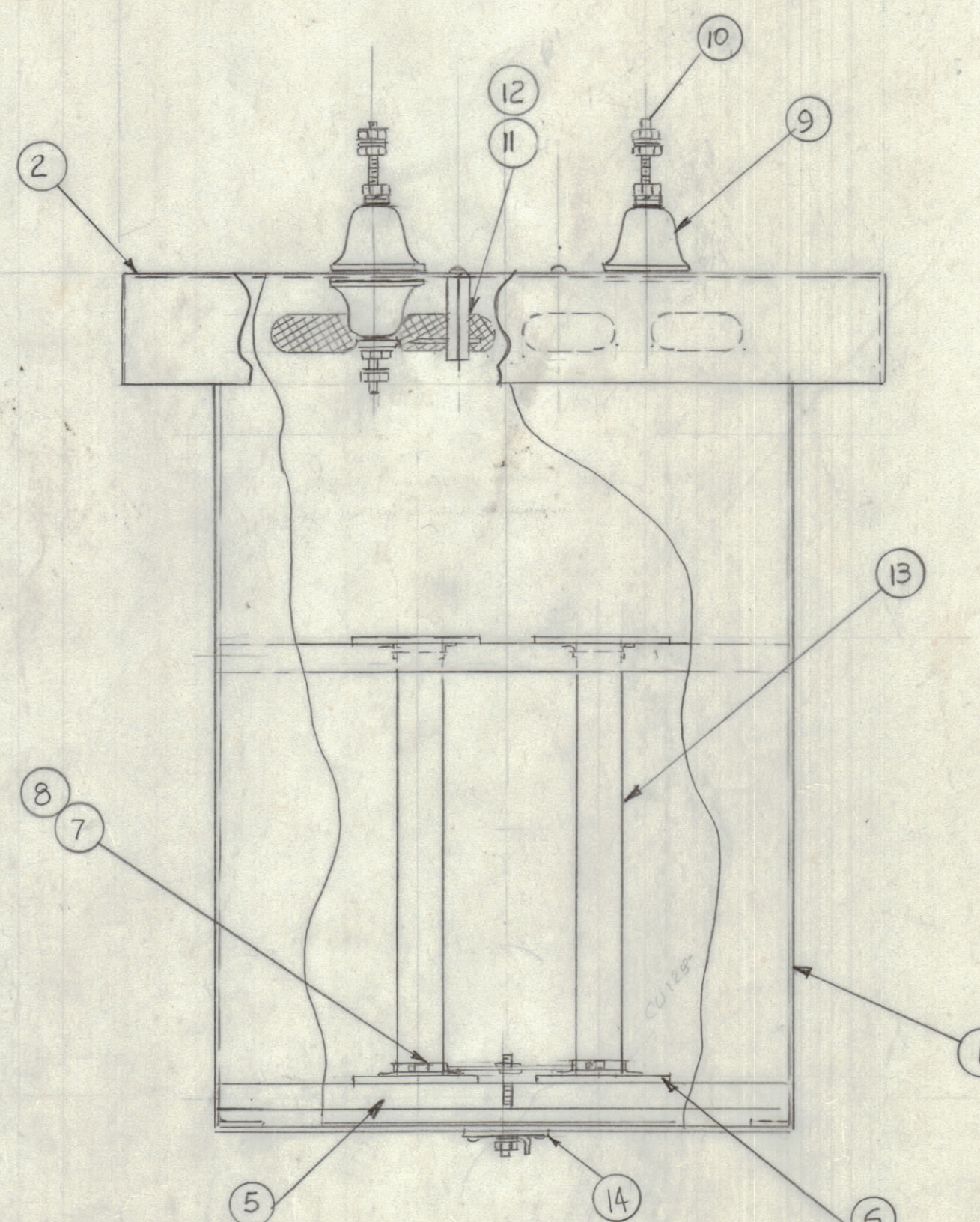
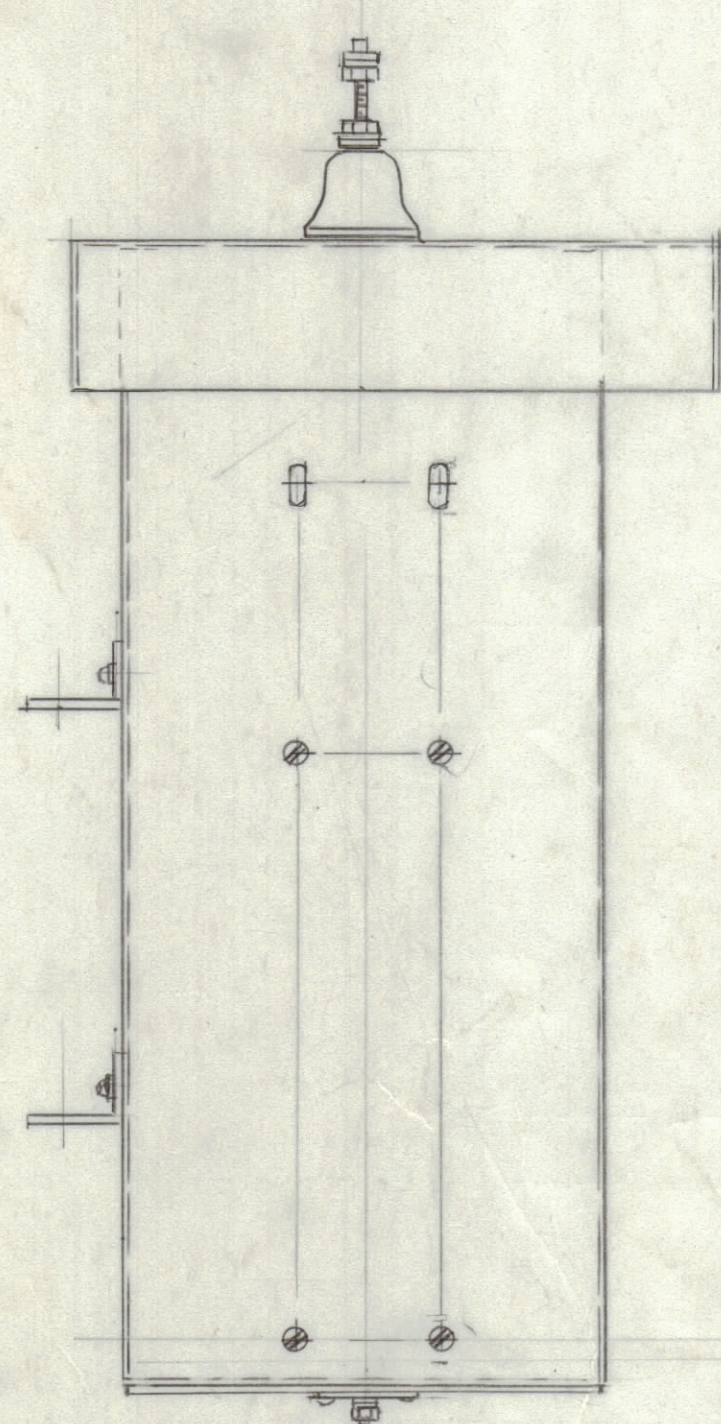
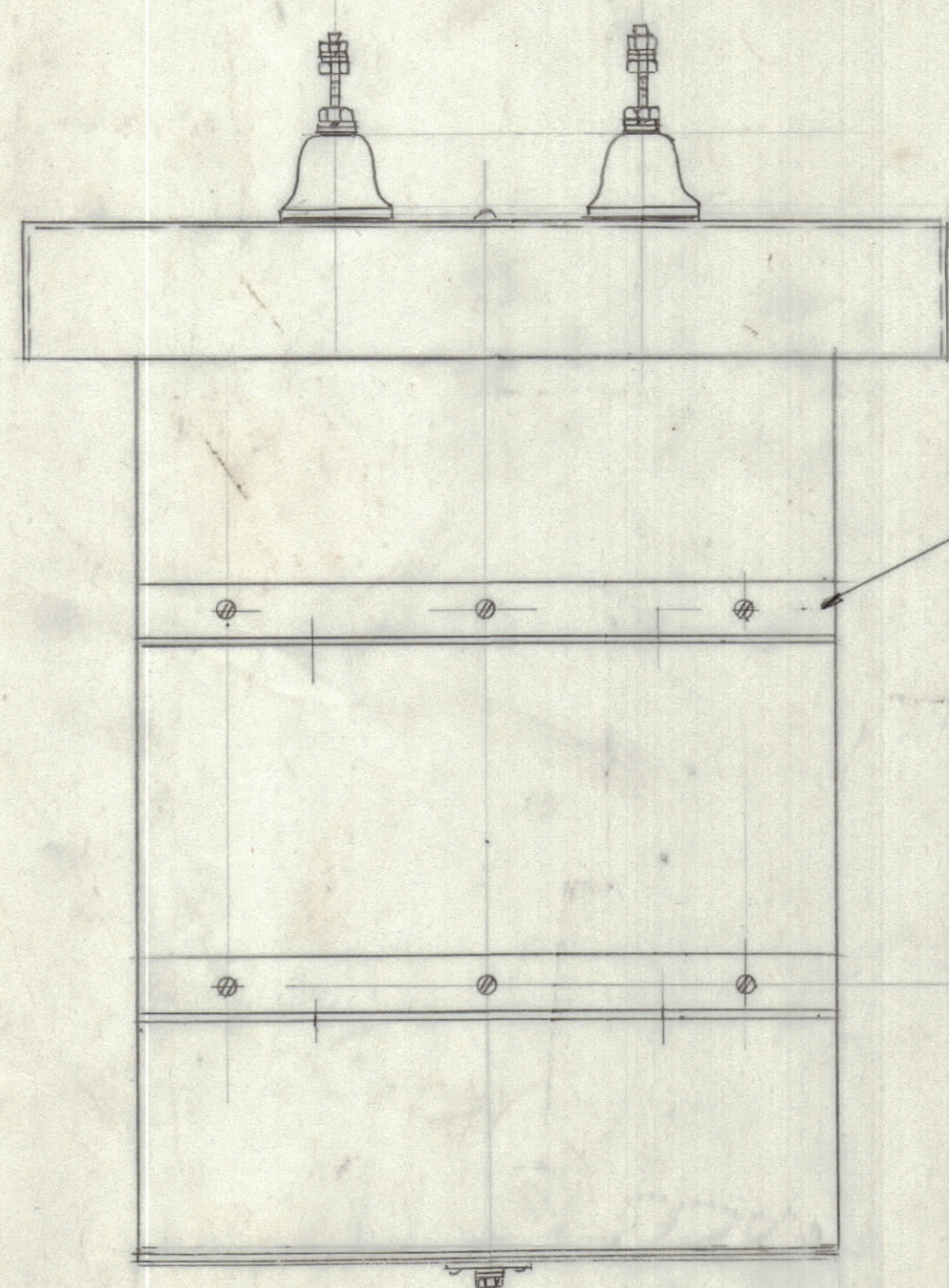


REVISIONS					
E.M.N.NO	DRAFT	CHKD	ZONE	LTR	
	GDL				
DESCRIPTION				DATE	APPROVED
ORIGINAL RELEASE FOR PRODUCTION				3-20-91	



QTY. REQ.	ITEM	PART NO.	DESCRIPTION	SYMBOL
1	14	MS 7231	PLATE MTG. GROUND	
2	13	RR 142-3	RESISTOR FIXED	
2	12	PM 103	SPARK ROD	
2	11	PM 721-3-1.75	POST SPARK ROD	
2	10	A 100	STUD, ASSY	
2	9	NS 115	CAP INSULATING	
4	8	CU 129-5	CLAMP HOSE	
16	7	MS 7210	RESISTOR, HOLDER	
4	6	PX 1307	PLATE MTG. RESISTOR	
4	5	PX 1306	SUPPORT RESISTOR	
2	4	MS 7229	BRACKET SUPPORT CASE	
1	3	MS 7228 SH2	CASE TER-500	
1	2	MS 7228 SH2	CASE TER-500	
1	1	MS 7228 SH1	CASE TER-1K	

QTY. REQ.	ITEM	PART NO.	DESCRIPTION	SYMBOL
LIST OF MATERIAL				
FINAL APPROVAL		DATE		
MECH. DES.		DATE		
ELECT. DES.		DATE		
CHECKED		DATE		
DRAWN		DATE		
MATERIAL		DATE		
FINISH		DATE		

UNLESS OTHERWISE SPECIFIED DIMENSIONS ARE IN INCHES AND INCLUDE CHEMICALLY APPLIED OR PLATED FINISHES

TOLERANCES ON  
 DECIMALS X ± .05 FRACTIONS ± 1/64  
 .XX ± .01 ANGLES ± 0° -30'  
 .XXX ± .005

QTY / UNIT	MODEL USED ON	ASS'Y NO.
APPLICATION		
CODE		
<small>NOTICE TO PERSONS RECEIVING THIS DRAWING          THE TECHNICAL MATERIEL CORPORATION claims proprietary right in the material disclosed hereon. This drawing is issued in confidence for engineering information only and may not be reproduced or used to manufacture anything shown hereon without permission from THE TECHNICAL MATERIEL CORPORATION to the user. This drawing is loaned for mutual assistance and is subject to recall at any time.</small>		

THE TECHNICAL MATERIEL CORP.  
MAMARONECK, NEW YORK

ASSY TER-500 1K  
1K & 2K

SIZE	CODE/IDENT NO.	DWG NO.	ISSUE
D	82679	Δ 5867	φ
SCALE	1/4	SHEET	OF

H 18"

A5867