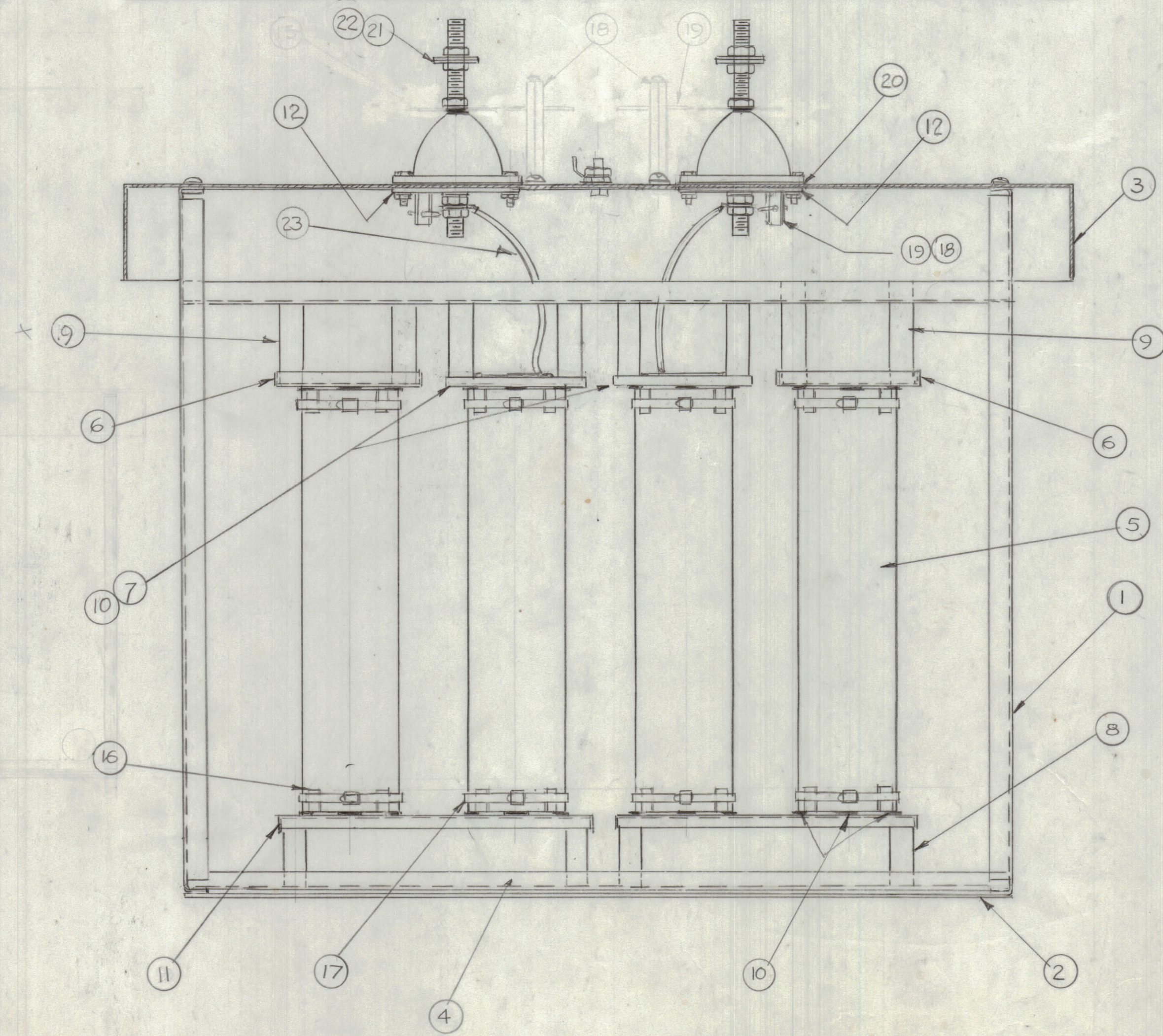
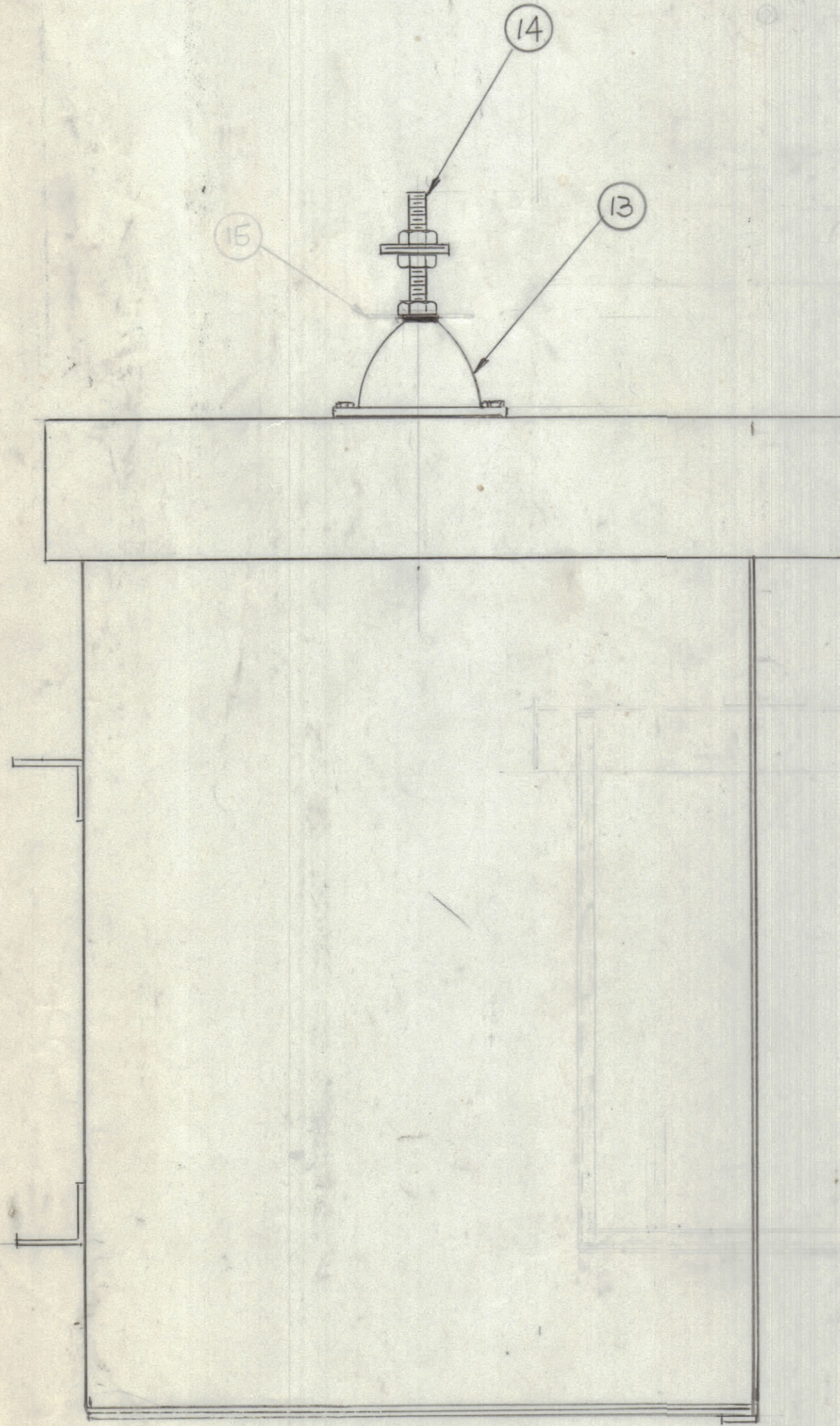
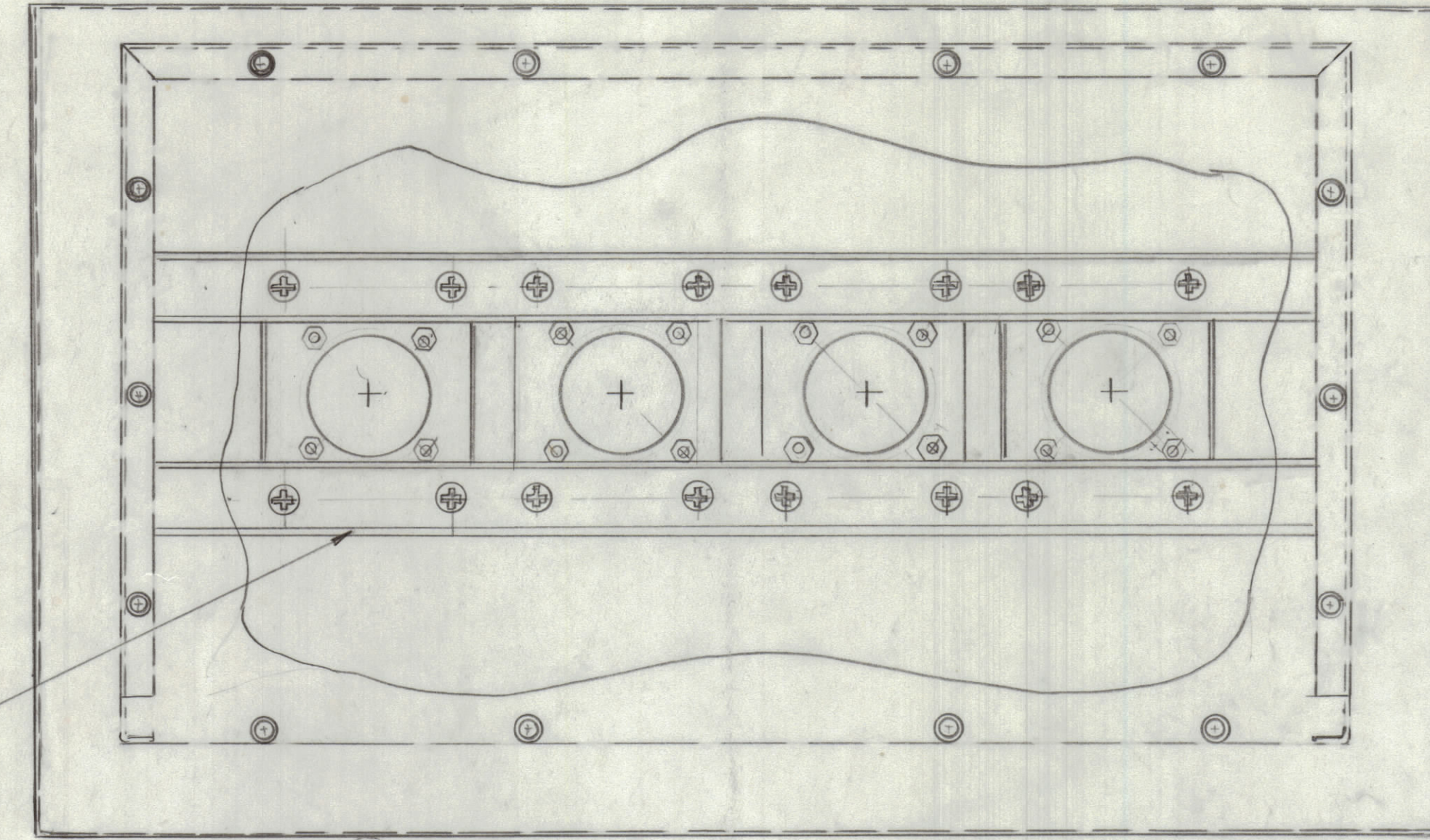


REVISIONS				DATE	APPROVED
E.M.N.O.	DRAFT	CHKD	ZONE LTR	DESCRIPTION	



QTY. REQ.	ITEM	PART NO.	DESCRIPTION	SYMBOL
X	23	MS 202-	STRAP ELECT 3/16 .020 COPPER	
10	22	NTH 5020 BN 24	NUT-HEX -	
4	21	FW 30 MR 155	FLAT WASHER	
2	20	GA-139	GASKET, NEOPRENE	
2	19	PM 724-1IN	ROD, SPARK	
2	18	PM 1615	POST SPARK	
8	17	CU 129-17-SS	CLAMP, HOSE	
32	16	MS 7210	RESISTOR HOLDER	
	15			
2	14	SM 150	STUD, OUTPUT	
2	13	NS 123	INSULATOR, FLANGED BOWL TYPE	
2	12	PX 1303	PLATE, RETAINER	
2	11	MS 7208	PLATE, MTG RESISTOR	
24	10	RY 119	SHOCK ABSORBER - 2 3/4" LONG	
8	9	TE 2520AE105	SPACER, THREADED 2 3/4" LONG	
16	8	TE 2520ME104R	SPACER, THREADED (2 3/4" LONG)	
2	7	PX 1304	PLATE MTG. RESISTOR	
2	6	MS 7207	PLATE MTG. RESISTOR	
4	5	RE 117-150	RESISTOR, FIXED	
4	4	MS 7206 SHT 1	CASE TER 4K	
1	3	MS 7206 SHT 2	CASE TER 4K/600	
1	2	MS 7206 SHT 2	CASE TER 4K/600	
1	1	MS 7206 SHT 1	CASE TER 4K/600	

UNLESS OTHERWISE SPECIFIED DIMENSIONS ARE IN INCHES AND INCLUDE CHEMICALLY APPLIED OR PLATED FINISHES	FINAL APPROVAL	DATE
	MECH. DES.	DATE
	ELECT. DES.	DATE
	CHECKED	DATE
	DRAWN	DATE

THE TECHNICAL MATERIEL CORP.
MAMARONECK, NEW YORK

TER 5K/10K ASSEMBLY
(4 K)

QTY / UNIT	MODEL USED ON	ASSY NO.
	APPLICATION	
	CODE	

MATERIAL	
FINISH	

SIZE	CODE	IDENT NO.	DWG NO.	ISSUE
D	82679	A	5865	

NOTICE TO PERSONS RECEIVING THIS DRAWING
THE TECHNICAL MATERIEL CORPORATION claims proprietary right in the material disclosed herein. This drawing is issued in confidence for engineering information only and may not be reproduced or used to manufacture anything shown hereon without permission from THE TECHNICAL MATERIEL CORPORATION to the user. This drawing is loaned for mutual assistance and is subject to recall at any time.

D

D

C

C

B

B

A

A

8

7

6

5

4

3

2

1