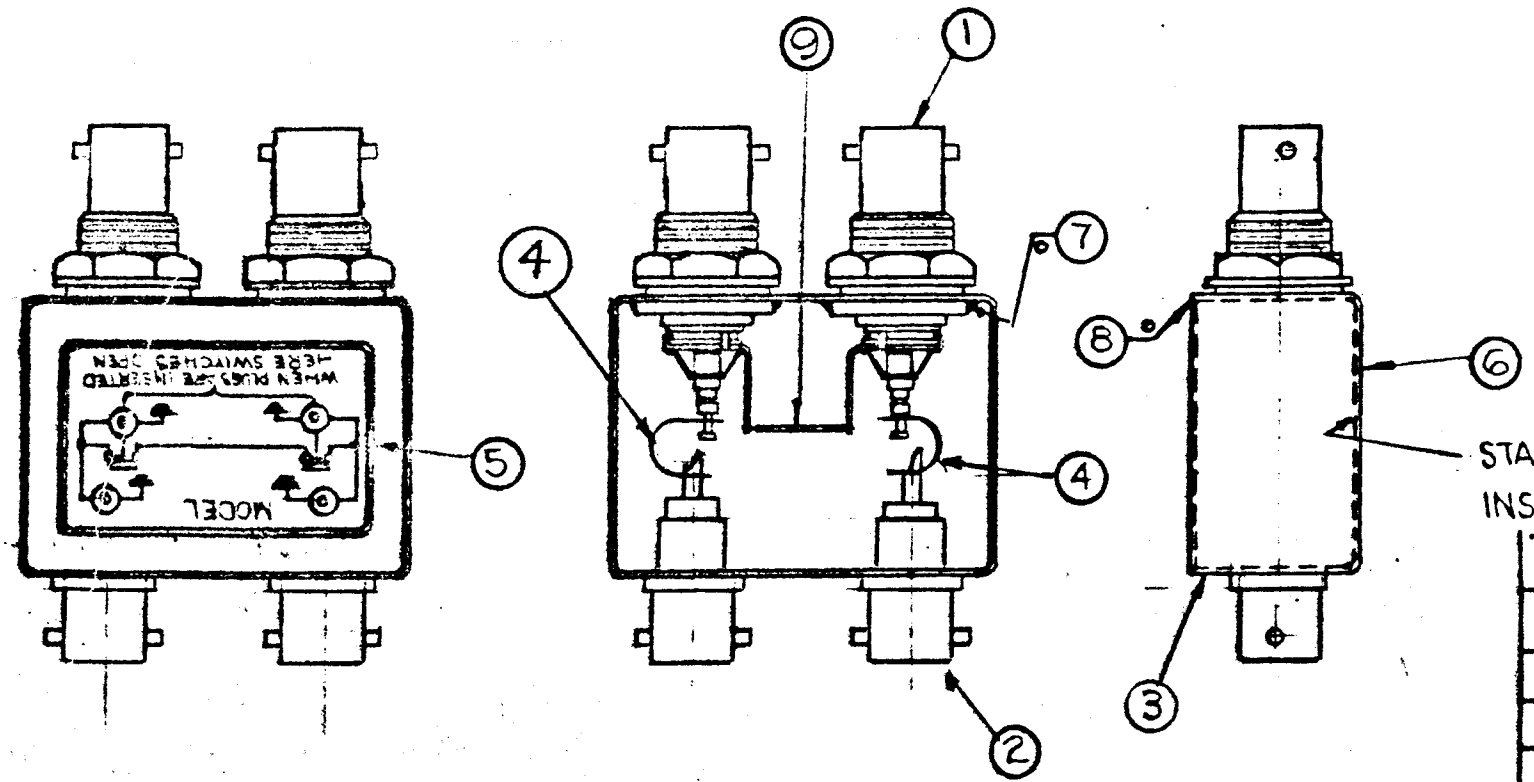


REVISIONS							
E.M.N. NO.	DRAFT	CHKD	ZONE	LTR	DESCRIPTION	DATE	APPROVED



STAMP DATE ON
INSIDE SURFACE

QTY	ITEM	PART NUMBER	DESCRIPTION
X	11	S-685	TEST PROCEDURE
4	10	HB 125-1	CAP, PLASTIC
1	9	WL-100-5	WIRE, BUSS-BAR #18
X	8	BS-100-	SOLDER, SOFT 361°
X	7	BS-100-2	SOLDER, SOFT 450°
1	6	NP-488	NAMEPLATE IDENTIFICATION (FOIL CAL.)
1	5	NP-490-	SCHEMATIC, DIAGRAM (FOIL CAL.)
2	4	MS-2983-	STRAP, FLEXIBLE CONNECTOR
1	3	BX-200-3	CASE, COVER
2	2	JJ-255	ADAPTOR CONNECTOR
2	1	JJ-325	ADAPTOR, CONNECTOR

- INDUCTION HEATING EQUIPMENT SET AT:
AMPERES -
SECONDS -
 - USE ITEM SEVEN (7) FOR MOUNTING ITEMS ONE (1) AND TWO (2).
 - USE ITEM EIGHT (8) FOR SEALING COVER ITEM THREE (3).
 - STRAP (ITEM 4) MUST BE KEPT AS FLEXIBLE AS POSSIBLE. DO NOT ALLOW SOLDER TO RUN OVER STRAP. LAY STRAP IN SO THAT IT CANNOT TOUCH CAN OR CONNECTOR BODIES.
 - FINISH AS FOLLOWS:
S-114 - ZINC CHROMATE PRIMER
S-115 - TMC SMOOTH GREY ENAMEL
(DO NOT PAINT CONNECTOR BODIES.)
 - AFFIX ITEM FIVE (5) TO FRONT AS SHOWN.
 - AFFIX ITEM SIX (6) TO REAR AS SHOWN.
- 0 - DENOTES SOLDER ALL AROUND.

SW 587		
QTY / UNIT	MODEL USED ON	ASS'Y NO.
APPLICATION		
	CODE	
<p>NOTICE TO PERSONS RECEIVING THIS DRAWING THE TECHNICAL MATERIEL CORPORATION claims proprietary right in the material disclosed hereon. This drawing is issued in confidence for engineering information only and may not be reproduced or used to manufacture anything shown hereon without permission from THE TECHNICAL MATERIEL CORPORATION to the user. This drawing is loaned for mutual assistance and is subject to recall at any time.</p>		

UNLESS OTHERWISE SPECIFIED DIMENSIONS ARE IN INCHES AND INCLUDE CHEMICALLY APPLIED OR PLATED FINISHES		FINAL APPROVAL <i>DB</i>	DATE <i>5/9/86</i>
DECIMALS .X ± .05 .XX ± .01 .XXX ± .005		MECH. DES.	DATE
FRACTIONS TOLS. 1/64 ANGLES 0° .30'		ELECT. DES. <i>EFM</i>	DATE <i>5/7/86</i>
MATERIAL SEE LIST		CHECKED <i>HJ</i>	DATE
FINISH SEE NOTE 5		DRAWN <i>RAW</i>	DATE <i>5-7-86</i>

REQ'D	ITEM	PART NUMBER	DESCRIPTION	SYM.
LIST OF MATERIAL				
THE TECHNICAL MATERIEL CORP. MAMARONECK, NEW YORK				
SW 587 ASSEMBLY				
SIZE	CODE IDENT. NO.	DWG NO.	ISSUE	
B	82679	A5859	①	
SCALE DO NOT SCALE			SHEET	OF