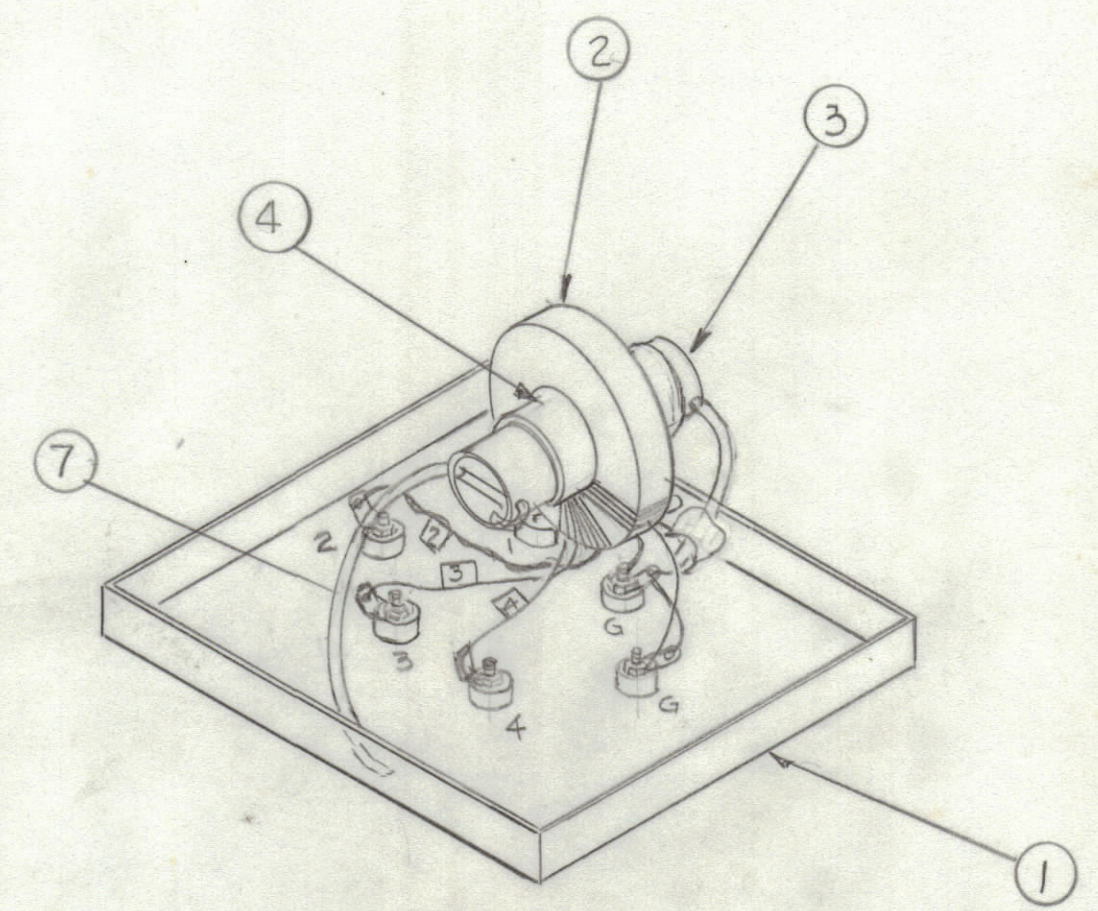
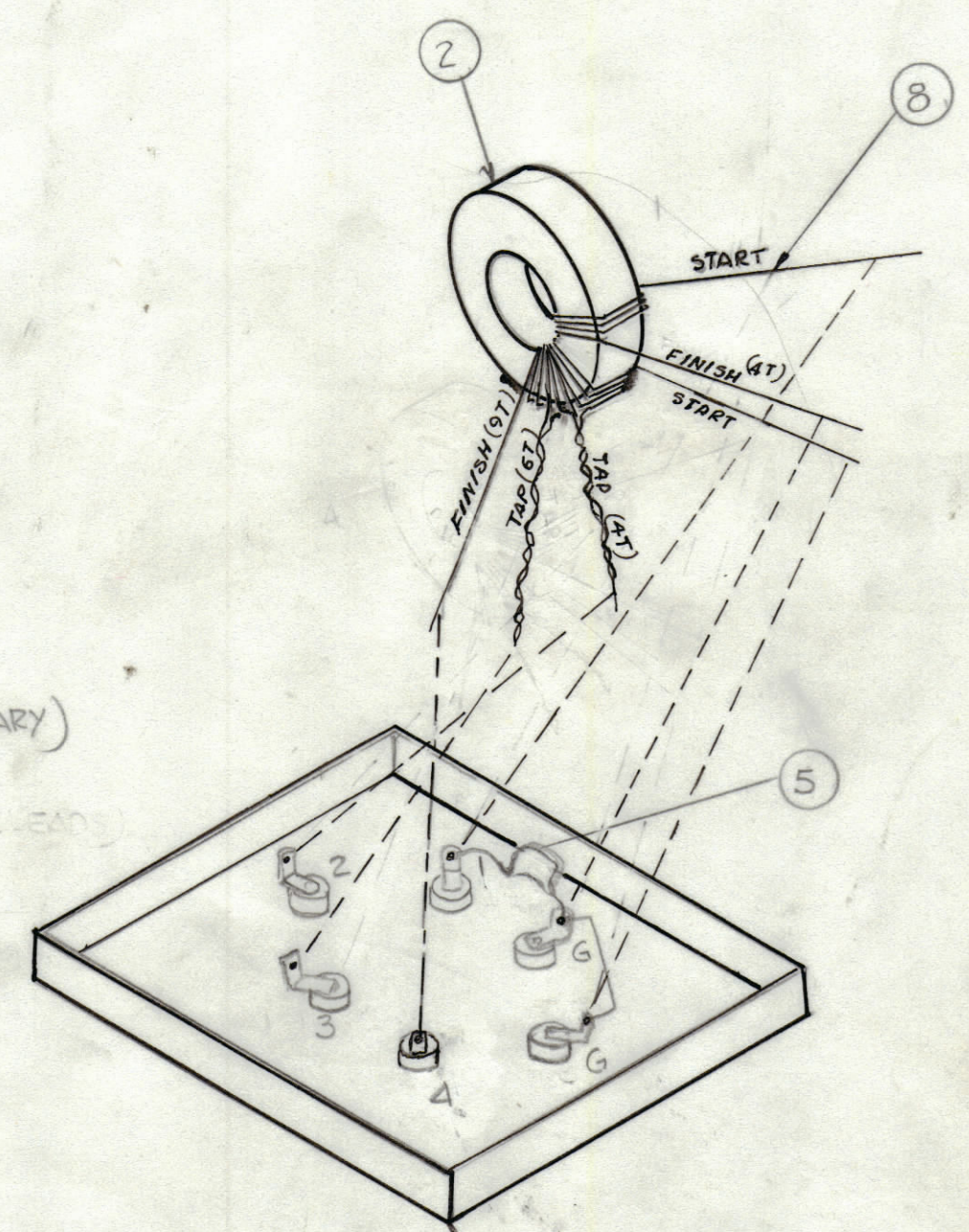
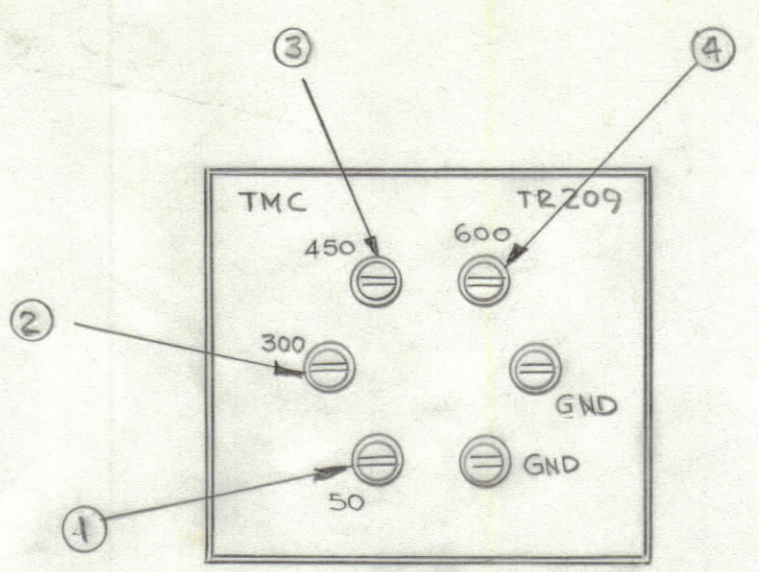
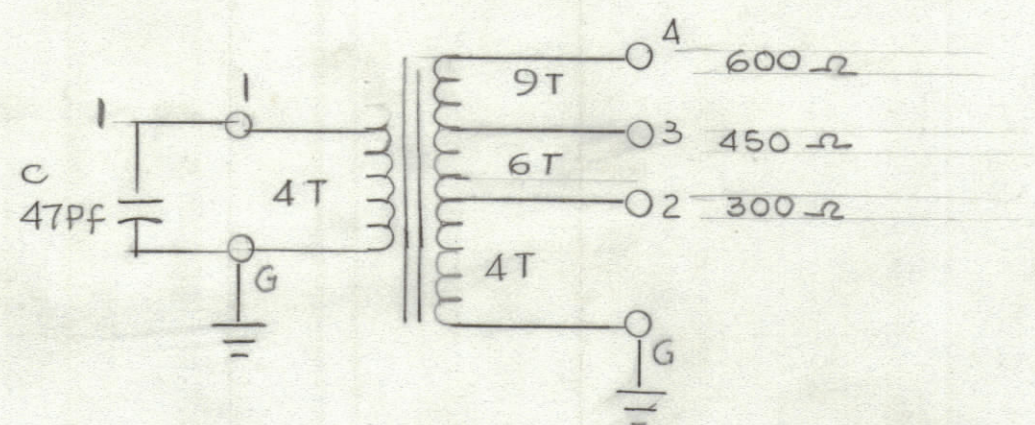


REVISIONS						
ZONE	LTR	DESCRIPTION	DATE	E.M.N.NO	DRAFT	CHKD APPD
	Ø	ORIGINAL RELEASE FOR PRODUCTION	4-19-84		GDL	



- NOTES
- 1- START TO WIND ITEM 8 (CLOCK WISE) 4 TURNS ON ITEM 2 (PRIMARY)
 - 2- START TO WIND ITEM 8 (CLOCK WISE) 4 TURNS & TAP (2)
CONTINUE FOR TWO TURNS & TAP AGAIN (3). (THIS TAPS BETTER LEAD)
CONTINUE TO WIND FOR 3 MORE TURNS & END
 - 3- LEAVE ALL LEADS & TAPS APPROX. 2 1/2 INCHS LONG
LATER THEY WILL BE CUTS TO SIZE WHEN MOUNTING TO COVER PLATE
 - 4- COAT WINDINGS WITH DUCO CEMENT (ITEM 10)
 - 5- BAKE FOR 10 MINUTES AT 120°F
 - 6-
 - 7- MOUNT THE CORE USING WIRE (ITEM 7) AND PHENOLIC - MOUNT (ITEM 3) USING ENOUGH TAPE AROUND THE MOUNT TO FIT THE CORE SECURELY
 - 8- SOLDER THE CAPACITOR ITEM(S) AS SHOWN
 - 9- CONNECT LEADS AS PER FIG.2 KEEPING LEADS AS SHORT AS POSSIBLE
 - 10- TEST PER BEFORE AND AFTER POTTING

QTY. REQ.	ITEM	PART NO.	DESCRIPTION	SYMBOL
	AR 11	BS100	SOLDER, SOFT	
	AR 10	GL103	GLUE	
	AR 9	TA 109-8	TAPE MASKING	
	AR 8	WI 122-30	WIRE ELECT. MAGNET	
	AR 7	WL 100-6	WIRE BUS, HOT POTTING	
	AR 6	GL 10003	ARALDITE	
1	5	CM112F470G	CAPACITOR FIX.	
1	4	T10001-1	LABEL	
1	3	CF 10012-1	FORMER COIL	
1	2	CI 104	CORE	
1	1	BX 10009-1	CASE	

LIST OF MATERIAL				
FINAL APPROVAL	DATE	THE TECHNICAL MATERIEL CORP. MAMARONECK, NEW YORK TRANSFORMER RF TR209		
MECH. DES.	DATE			
ELECT. DES.	DATE			
CHECKED	DATE			
DRAWN	DATE			
SIZE	CODE IDENT. NO.	DWG. NO.	ISSUE	
C	82679	A 5831	Ø	
SCALE		SHEET OF		

UNLESS OTHERWISE SPECIFIED DIMENSIONS ARE IN INCHES AND INCLUDE CHEMICALLY APPLIED OR PLATED FINISHES

TOLERANCES ON

DECIMALS	FRACTIONS
.X ± .05	± 1/64
.XX ± .01	ANGLES
.XXX ± .005	± 0° -30'

MATERIAL

FINISH

QTY / UNIT	MODEL USED ON	ASS'Y NO.
APPLICATION		
CODE		
NOTICE TO PERSONS RECEIVING THIS DRAWING THE TECHNICAL MATERIEL CORPORATION claims proprietary right in the material disclosed hereon. This drawing is issued in confidence for engineering information only and may not be reproduced or used to manufacture anything shown hereon without permission from THE TECHNICAL MATERIEL CORPORATION to the user. This drawing is loaned for mutual assistance and is subject to recall at any time.		

A5831

B

A