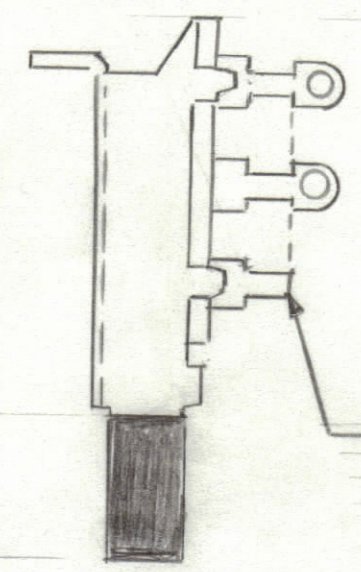
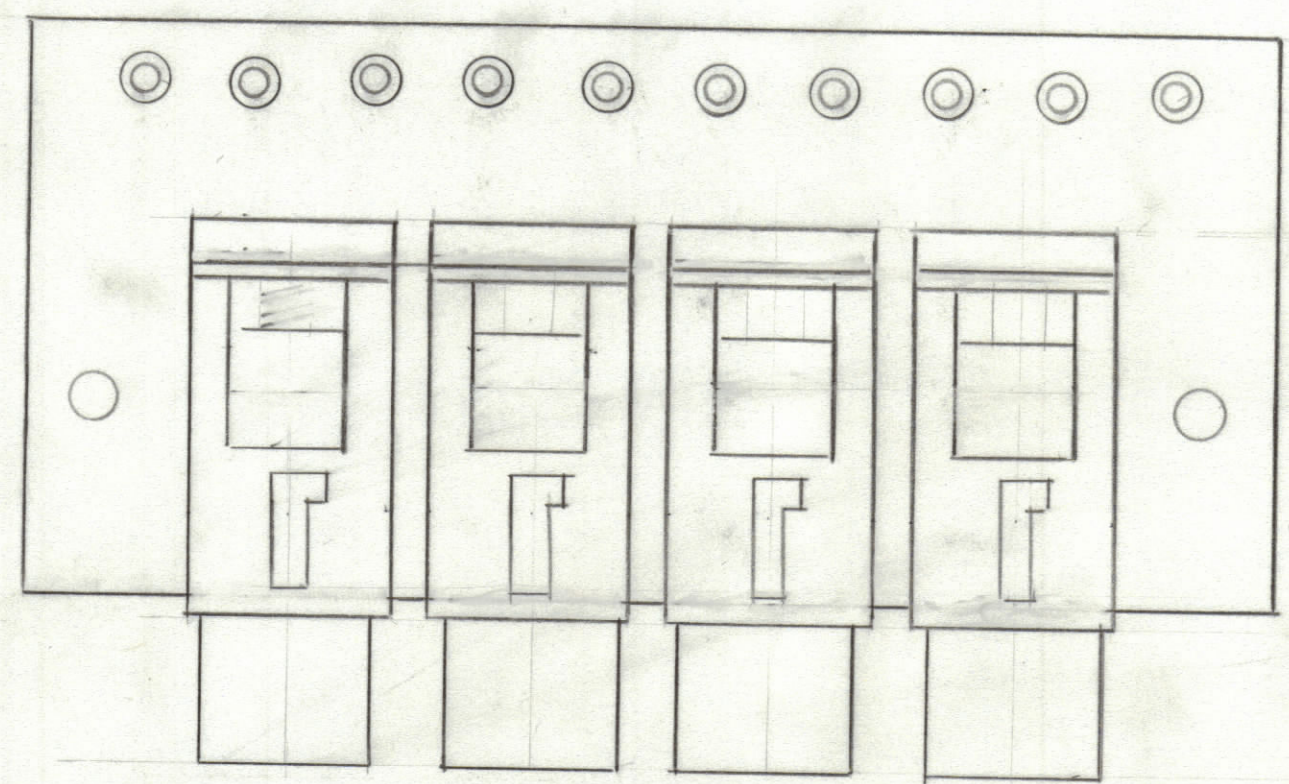
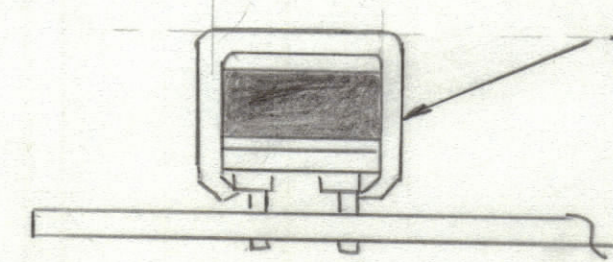


REVISIONS						
ZONE	LTR	DESCRIPTION	DATE	E.M.N.NO	DRAFT	CHKD APPD
	Ø	ORIGINAL RELEASE FOR PRODUCTION	4-18-83			



CUT TERMINAL AREA OFF AND MOUNT FLUSH TO BOARD

DETAIL "A"



TYPICAL 4 PLACES (SEE DETAIL "A")

REF PC828

QTY. REQ.	ITEM	PART NO.	DESCRIPTION	SYMBOL
X 2		BS 100	SOLDER TIN ALLOY	
1		PC	PRINTED CIRCUIT BD	

LIST OF MATERIAL			
<b>THE TECHNICAL MATERIEL CORP.</b> MAMARONECK, NEW YORK			
ASSY PRINTED CIRCUIT BD SWITCHING CIRCUIT			

UNLESS OTHERWISE SPECIFIED DIMENSIONS ARE IN INCHES AND INCLUDE CHEMICALLY APPLIED OR PLATED FINISHES

TOLERANCES ON	
DECIMALS	FRACTIONS
.X ± .05	± 1/64
.XX ± .01	ANGLES
.XXX ± .005	± 0°-30'

1	RCST-Z	AX5255
QTY / UNIT	MODEL USED ON	ASS'Y NO.
APPLICATION		
CODE		

**NOTICE TO PERSONS RECEIVING THIS DRAWING**  
 THE TECHNICAL MATERIEL CORPORATION claims proprietary right in the material disclosed hereon. This drawing is issued in confidence for engineering information only and may not be reproduced or used to manufacture anything shown hereon without permission from THE TECHNICAL MATERIEL CORPORATION to the user. This drawing is loaned for mutual assistance and is subject to recall at any time.

FINAL APPROVAL	DATE
MECH. DES.	DATE
ELECT. DES.	DATE
CHECKED	DATE
DRAWN GDL	DATE 10-21-82

SIZE	CODE IDENT.NO	DWG NO.	ISSUE
C	82679	A5805	Ø

- ASSEMBLY NOTES**
1. TO MOUNT COMPONENTS INSERT LEADS THROUGH HOLES.
  2. CAUTION, WHEN APPLYING HEAT & SOLDER TO LEAD & FOIL.
  3. CLEAN & INSPECT AS PER SPEC S676.
  4. FOR ELECTRICAL COMPONENT PART NUMBERS REFER TO NPL A
  5. USE SYMBOL NUMBERS FOR ASSY. REF.