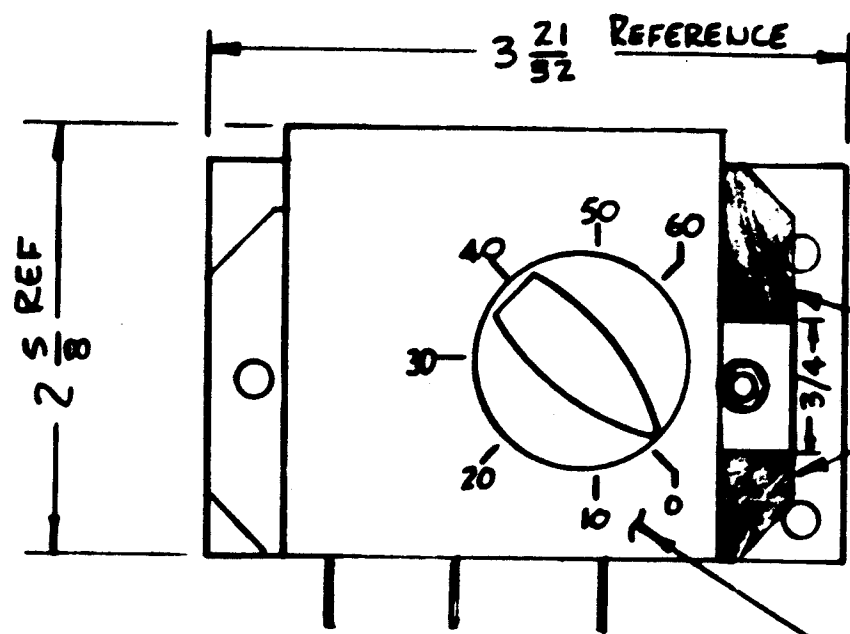
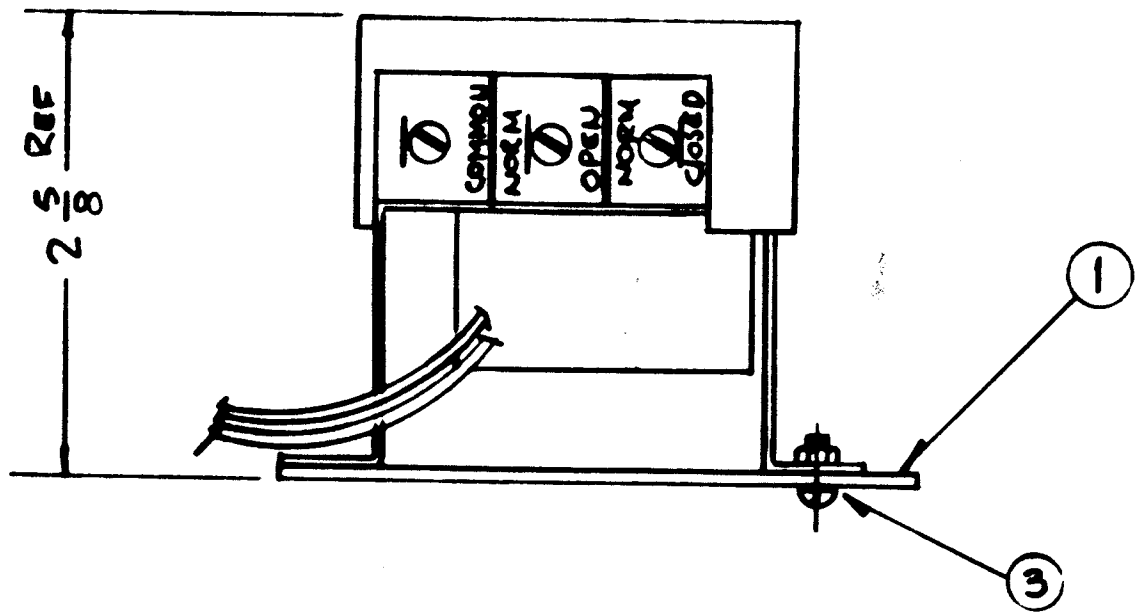


5 4 3 2 1

REVISIONS							
EMN NO	DRAFT	CHKD	ZONE	LTR	DESCRIPTION	DATE	APPROVED
—	dw			Ø	ORIGINAL RELEASE	9-11-80	



DARKEN AREA
MUST BE CUT OFF
BEFORE ASSEMBLING



TIMER SPECIFICATIONS
 Motor 240 Volts, 60 HZ
 Clutch Solenoid 240 Vac
 Switch Rated 20A, 125/250 Vac
 Time Delay . 60 Seconds

REQ'D	ITEM	PART NUMBER	DESCRIPTION	SYM.
X	3	HARDWARE AS REQUIRED		
1	2	S401-533 (46308-84)		
1	1	M57031	PLATE, MTG for TIMER	

LIST OF MATERIAL

THE TECHNICAL MATERIEL CORP.
MAMARONECK, NEW YORK

ASSEMBLY, TIMER

STANDARD		
QTY / UNIT	MODEL USED ON	ASSY NO.
APPLICATION		
CODE		
<small>BEFORE TO FINISH REMOVE THE FINISH THE FINISHING MATERIAL COMPANY claims proprietary right in the method described herein. This drawing is issued in confidence for engineering information only and may not be reproduced or used in manufacture without the express written permission from THE FINISHING MATERIAL COMPANY to the user. This drawing is issued for actual assistance and is subject to recall at any time.</small>		

UNLESS OTHERWISE SPECIFIED
DIMENSIONS ARE IN INCHES
AND FINISHES GENERALLY APPLIED
ON PLATED PARTS

DESIGNS	DATE
BY	DATE
CHECKED	DATE
APPROVED	DATE
DATE	DATE

MATERIAL

FINISH

SIZE	CODE IDENT. NO.	DWG NO.	ISSUE
B	82679	A5783	Ø
SCALE	SHEET		OF

D
C
B
A

D
C
B
A

5 4 3 2 1