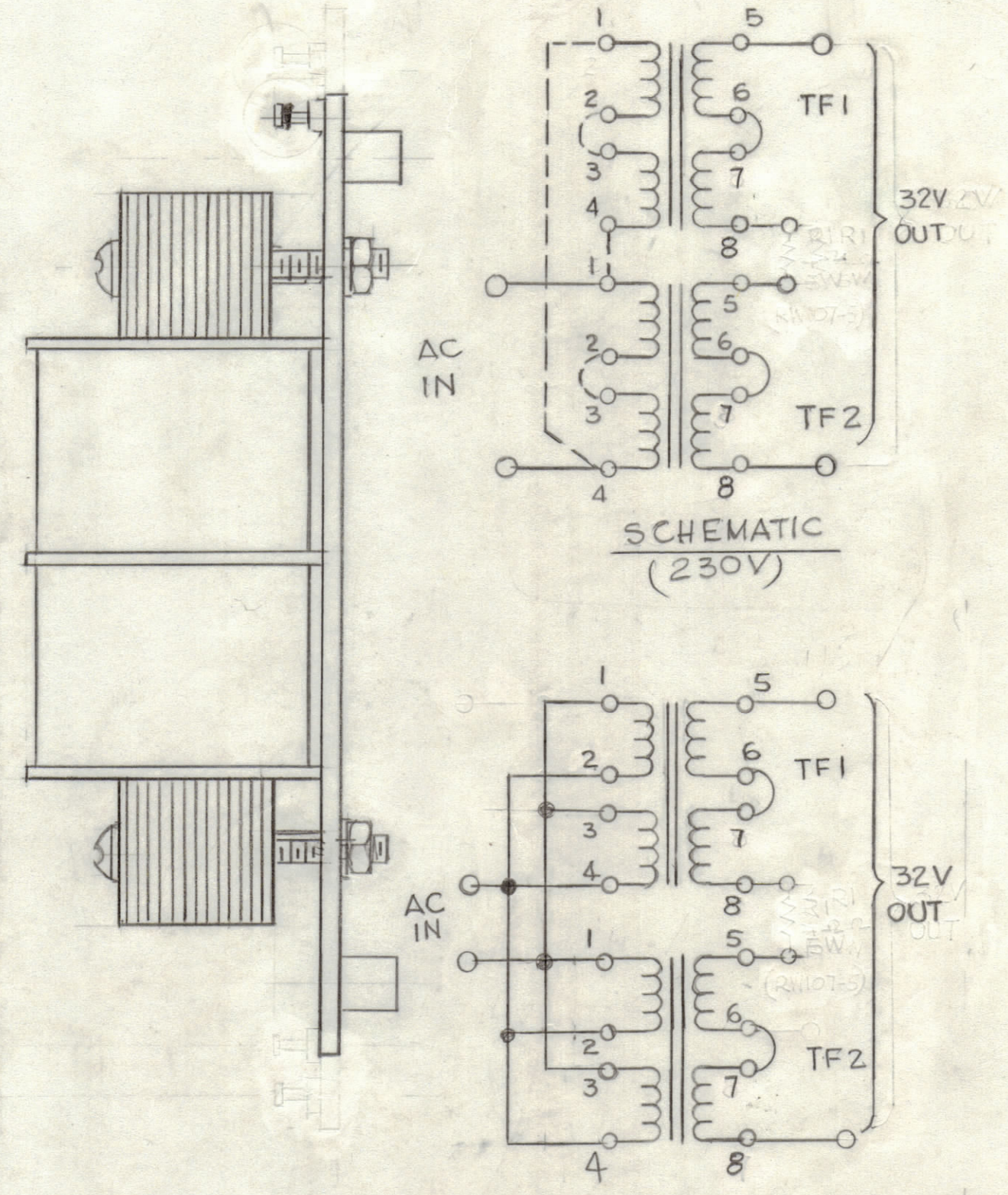
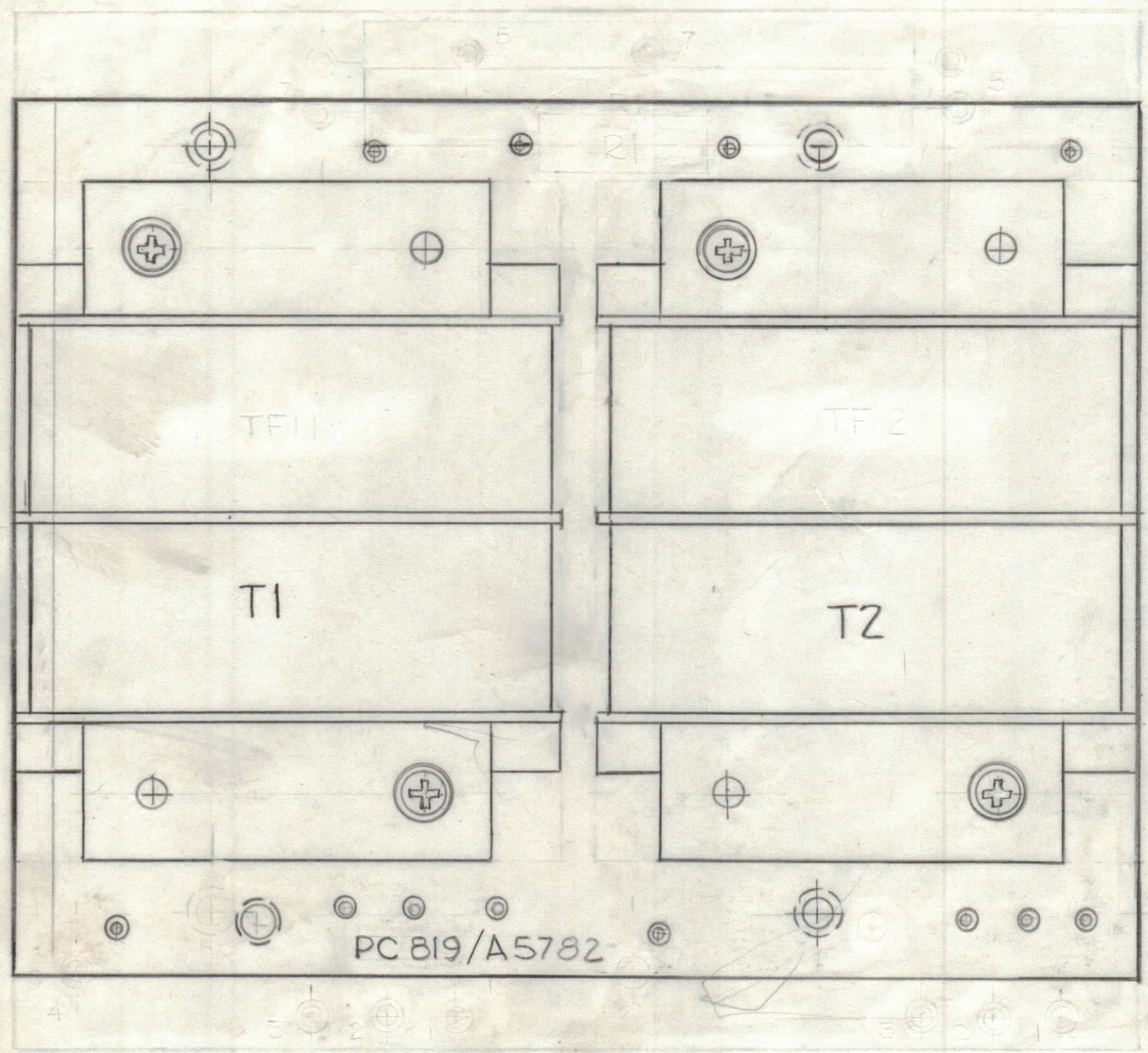


A R1 (R107-S) DELETED 10-68 21893

REVISIONS						
ZONE	LTR	DESCRIPTION	DATE	E.M.N.NO	DRAFT	CHKD APPD
	Ø	ORIGINAL RELEASE FOR PRODUCTION	2-5-81			



- ASSEMBLY NOTES**
1. TO MOUNT COMPONENTS INSERT LEADS THROUGH HOLES.
 2. CAUTION, WHEN APPLYING HEAT & SOLDER TO LEAD & FOIL.
 3. CLEAN & INSPECT AS PER SPEC S676.
 4. FOR ELECTRICAL COMPONENT PART NUMBERS REFER TO NPL A5782
 5. USE SYMBOL NUMBERS FOR ASSY. REF.

QTY / UNIT	MODEL USED ON	ASS'Y NO.
1	LMC-8A	
1	AMC-8A	
APPLICATION		
	CODE	

NOTICE TO PERSONS RECEIVING THIS DRAWING
 THE TECHNICAL MATERIEL CORPORATION claims proprietary right in the material disclosed hereon. This drawing is issued in confidence for engineering information only and may not be reproduced or used to manufacture anything shown hereon without permission from THE TECHNICAL MATERIEL CORPORATION to the user. This drawing is loaned for mutual assistance and is subject to recall at any time.

QTY. REQ.	ITEM	PART NO.	DESCRIPTION	SYMBOL
X	2	BS 100	SOLDER TIN ALLOY	
1	1	PC 819	PRINTED CIRCUIT BOARD	

LIST OF MATERIAL

FINAL APPROVAL	DATE
MECH. DES.	DATE
ELECT. DES.	DATE
CHECKED	DATE
DRAWN	DATE
G.D.L.	7-2-80

THE TECHNICAL MATERIEL CORP.
 MAMARONECK, NEW YORK

TRANSFORMER ASSEMBLY

SIZE	CODE IDENT. NO.	DWG NO.	ISSUE
C	82679	A5782	A
SCALE	2:1		SHEET OF