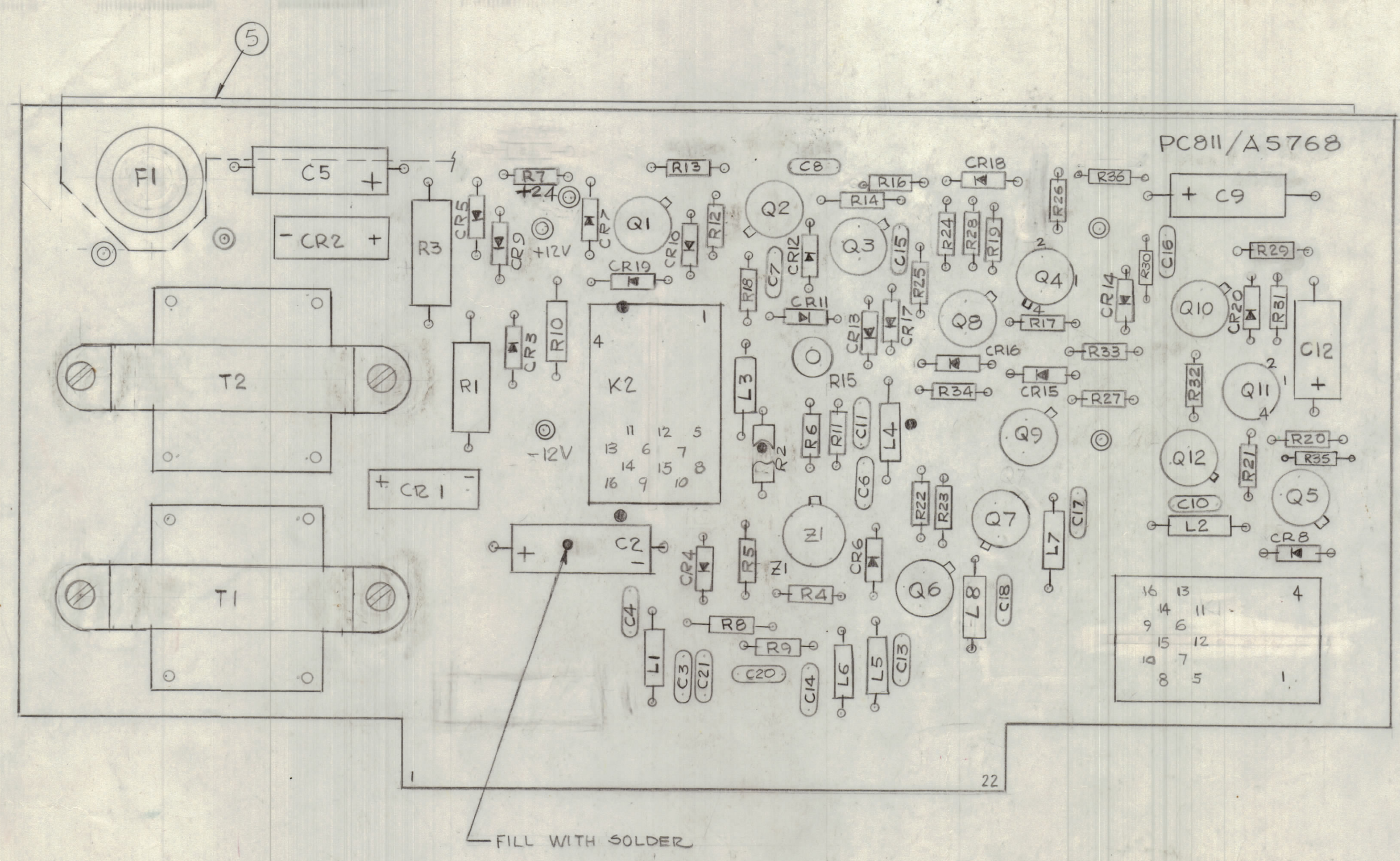
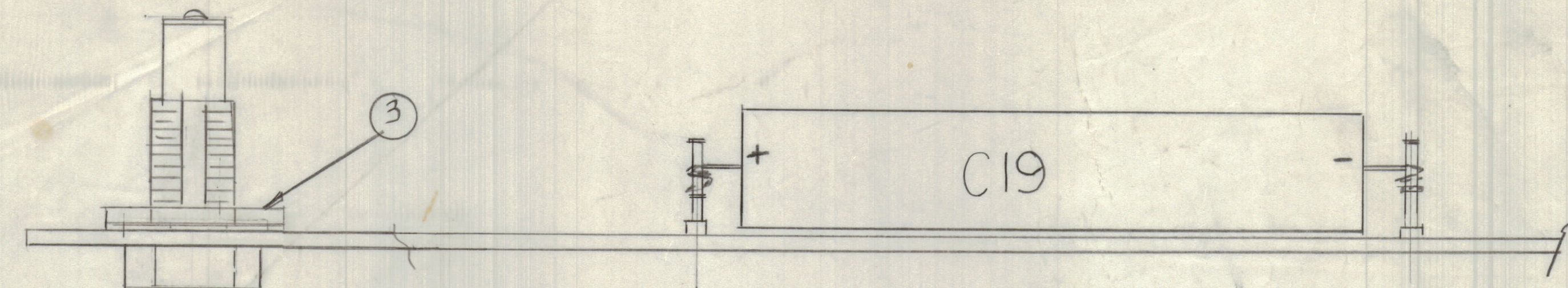
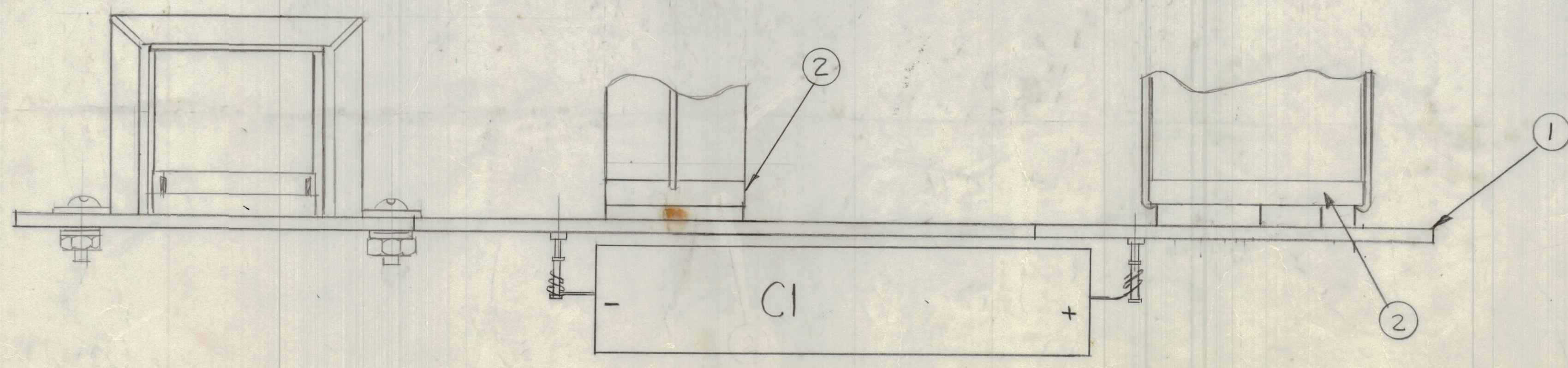


REVISIONS					
E.M.N.O.	DRAFT	CHKD	ZONE	LTR	
21885	MAC				
			A		
DESCRIPTION				DATE	APPROVED
ORIGINAL RELEASE FOR PRODUCTION				9-19-79	E.B.
C1 & C9 Added, Assembly (W.P. DATED)				5-11-81	



ASSEMBLY NOTES

1. TO MOUNT COMPONENTS INSERT LEADS THROUGH HOLES.
2. CAUTION, WHEN APPLYING HEAT & SOLDER TO LEAD & FOIL.
3. CLEAN & INSPECT AS PER SPEC S676.
4. FOR ELECTRICAL COMPONENT PART NUMBERS REFER TO NPL A5768
5. USE SYMBOL NUMBERS FOR ASSY. REF.



QTY. REQ.	ITEM	PART NO.	DESCRIPTION	SYMBOL
1	5	MS 6946	BRACKET, PC Bd.	
X	4	BS100	SOLDER TIN ALLOY	
1	3	FS 103	FUSE SOCKET	
2	2	TS71-4	SOCKET RELAY	
1	1	PC811	PRINTED CIRCUIT BD	

LIST OF MATERIAL				
UNLESS OTHERWISE SPECIFIED DIMENSIONS ARE IN INCHES AND INCLUDE CHEMICALLY APPLIED OR PLATED FINISHES		FINAL APPROVAL	DATE	
TOLERANCES ON		MECH. DES.	DATE	
DECIMALS		ELECT. DES.	DATE	
FRACTIONS		CHECKED	DATE	
ANGLES		DRAWN	DATE	
PLATED FINISHES		THE TECHNICAL MATERIEL CORP. MAMARONECK, NEW YORK		
ASSY PRINTED CIRCUIT BD CONTROL				
SIZE CODE IDENT NO. DWG NO.				ISSUE
D 82679 A5768				A
SCALE 2:1				SHEET OF

QTY / UNIT	MODEL USED ON	ASS'Y NO.
1	MFT-10K/5	AX5240
APPLICATION		
CODE		
MATERIAL		
FINISH		

NOTICE TO PERSONS RECEIVING THIS DRAWING
 THE TECHNICAL MATERIEL CORPORATION claims proprietary right in the material disclosed herein. This drawing is issued in confidence for engineering information only and may not be reproduced or used to manufacture anything shown herein without permission from THE TECHNICAL MATERIEL CORPORATION to the user. This drawing is loaned for mutual assistance and is subject to recall at any time.